



# THE GIANT

---

A towering, aging sheriff in a small town battles outlaws, corruption, and his own inner demons while upholding justice in a changing world.





# SYNOPSIS

---

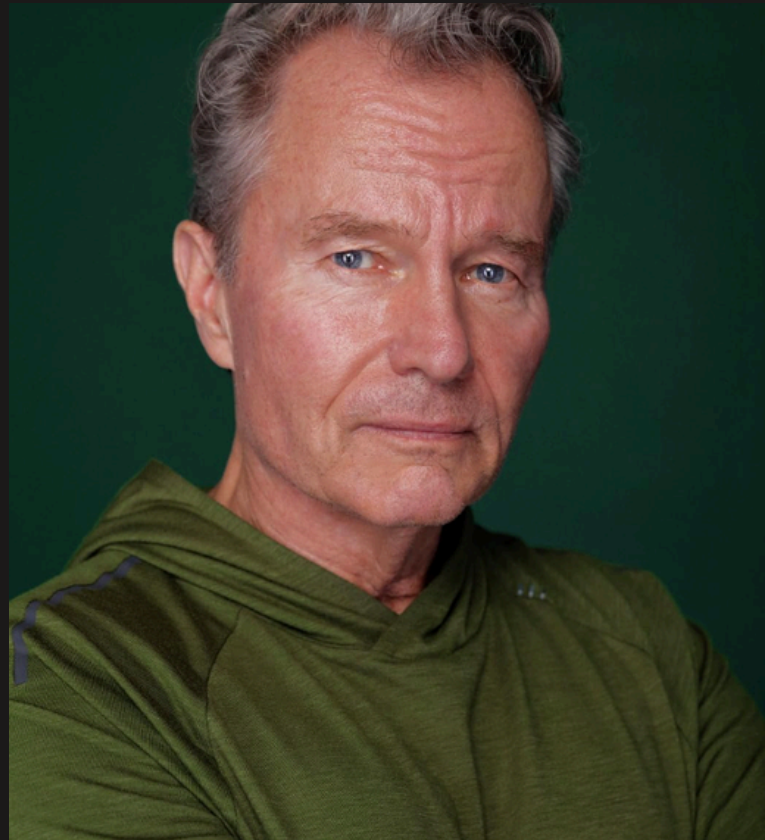
The Giant follows Sheriff Clay “Giant” Walker“ and his team of deputies as they investigate a rash of crime and murders in their small town. They ask, where’s the threat coming from?

Do-Nut a town steeped in history may just be the cause of the onslaught of crime. The effects go back generations.... deeply rooted in darkness. But everything that happens in the dark, always comes to light.

In this small town with big city energy each episode touches on the dark side of human nature. Putting a mirror up, reflecting back that all humans lie and cheat. Everyone has bias, been hurt, used avarice for self serving.

But, under the surface, it’s the change and enlightenment that transcends each character good or bad. Welcome to Do-Nut!

# MEET THE CAST



JOHN SAVAGE

ERWIN WALKER

Over 200 film credits to his name and still counting... as an actor of great range and diversity. From a sensitive, vulnerable screen presence to raging characters he explodes on the screen from *Hair*, *The Deer Hunter*, *Summer of Sam*, and *Salvador* just to name a few.



JAKE BUSEY

PAUL T. WALKER

“I get to be in Movies and on the Telly. I am very thankful to enjoy my work, but I still can't take myself seriously.” That’s okay, because we do with roles in *Stranger Things*, *Starship Troopers* and *Enemy of the State*. He is also a licensed helicopter pilot and violinist.



JEREMY MILLER

ESU CAPTAIN ROY BEAN

Jeremy James Miller is an American actor best known for his role as Ben Seaver on the hit sitcom **Growing Pains** (1985–1992). Starting as a child actor in commercials, he also voiced Linus van Pelt in Peanuts specials and appeared in films like **Dickie Roberts: Former Child Star**.



DOUG MARCAIDA

ACE 2

“**It will KEAL!**” Yes, that Doug Marcaida, trained edged weapons specialist, martial artist and US military veteran. From the History Channel’s long running hit show “**Forged in Fire.**”

# MEET THE CAST



**KELLEY POLING**  
DEPUTY JONES

She's America's favorite red hot heroine. Talented, gifted, and versatile in her ability as on-screen talent who's work can be seen in *Peter Five Eight, Totally Studios, and Celtics.*



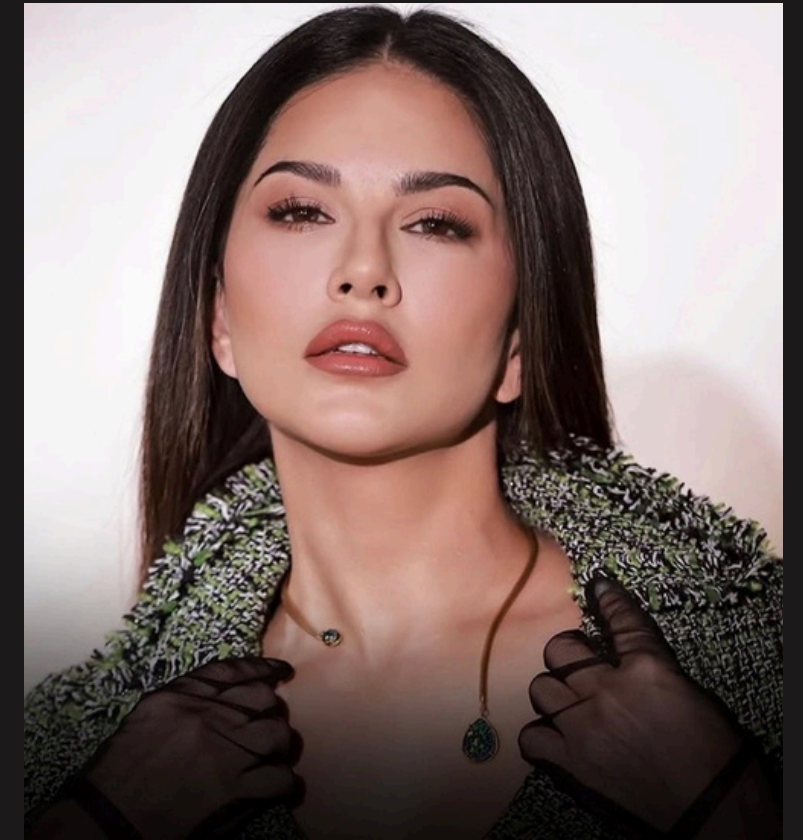
**ELI JANE**  
SARA

Her remarkable versatility and dynamic performances stand out. She'll be seen in the upcoming *The Unbreakable Bond*, you'll also find her in *Song of My Mother's Tears.*



**VANESSA THORPE**  
DEPUTY DALE

A great emotional range and an equally self-deprecating sense of humor you may find her work on *SNL, Bloody Axe Wound, 4<sup>TH</sup> Man Out, Unseen* and the upcoming short *Art Time.*



**SUNNY LEONE**  
SHERIFF QUANAH DEERLEAF

After receiving positive reviews for her performance in Anurag Kashyap's *Kennedy*, Sunny Leone is now set to take on an exciting new Hollywood project. The actress has joined the cast of the US-based series *The Giant*, created and written by Kevin B Ploth. She'll begin shooting for the same.

# MEET THE TEAM

---



**KEVIN B PLOTH**

EXECUTIVE PRODUCER  
- WRITER - DIRECTOR

Known for *This Stitching Will Last* and *The Ploth Thickens*.



**KELLEY POLING**

EXECUTIVE PRODUCER

Known for *Little Miss Perfect*



**DOUG MARCAIDA**

PRODUCER

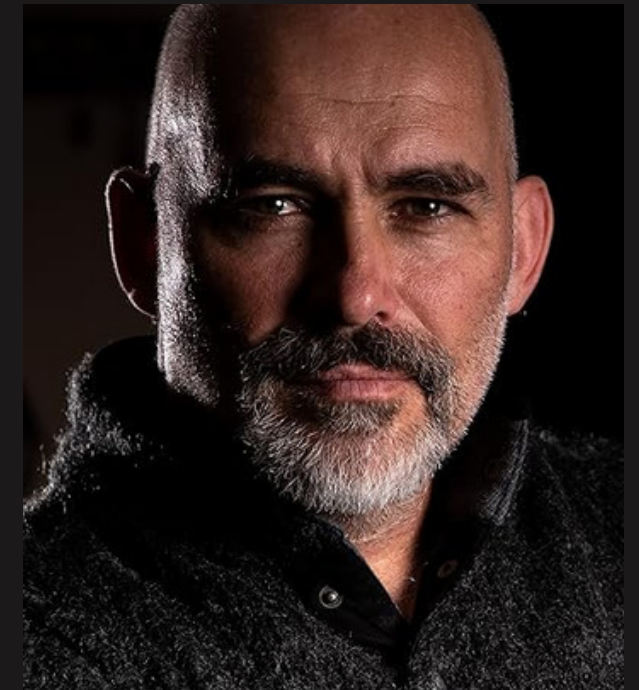
Known for *The Giant*



**VANESSA THORPE**

PRODUCER

Known for *Unseen*, *Abandon*, and *Choice*.



**CHARLIE PARRISH**

PRODUCER - STUNT  
COORDINATOR

Known for *The Suicide Squad*, *Willy's Wonderland*, and *Transformers: Age of Extinction*

# SIMILAR SERIES WE LOVE

---

I've included the key art of two shows our series have been likened to. Shall we say the “x meets y” factor?

“True Detective” meets “Justified” — a brutal small-town crime thriller where a sheriff investigates ritual murders connected to a secret society hiding in plain sight.

...and if you want to go “old school,” let’s talk “High Noon and Twin Peaks.” Giving you a true sense of the market for our series.



A KEVIN B PLOTH PRODUCTION  
ARTIMIS THEATRICAL PRODUCTIONS LLC

ROLLIN STUDIOS & BUENOS DIAZ MEDIA  
PRESENTS

# THE GIANT

TIME TO DIE TIME TO FIGHT

CAST ANTHONY DELINGIS, VANESSA THORPE, DOUG MARCAIDA, ELI JANE, BRETT AZAR, JACOBY RAY, JACKIE MCCARTHY, KELLEY POLING,  
EDDY RICH, ED TRUCCO, RICHARD RYAN, SUSAN SPANO, JOSEPH D'ONOFRIO, MICHAEL SEAN MCGUINNESS, DIEGO AGUIRRE, REBECCA PUZO, SARA TOUIER, VINNY GOMEZ, R.J. MARCAIDA, CODY COWELL, ERROL W. GREAVES  
GUEST STARRING JACK SCALIA, BRINKE STEVENS, EG DAILY, HEATHER MORIARTY, NADIA LANFRANCONI SPECIAL APPEARANCE BY ROB RIGGLE MUSIC BY JORDAN BENNETT DIRECTED AND WRITTEN BY KEVIN B PLOTH DIRECTORS OF PHOTOGRAPHY LARRY GRESS & DOUG LEBLANC  
EXECUTIVE PRODUCERS MARTY URBAN, CHRIS RICH, KEVIN B PLOTH, MIKE HARPER, EDDY RICH, ROBERT GILBERT PRODUCERS ANTHONY DELINGIS, AND AARON OZEE SUPERVISING EDITOR DAVID DIAZ DISTRIBUTION BLACK WOLF MEDIA  
STUNTS AND FIGHT CHOREOGRAPHY CHARLIE PARISH ARMORER ISS FX MAKEUP/HMO AMANDA TERRY



AWARD Winner New TV Pilot  
Movie Play  
International Film Festival



Kevin B Ploth • kbploth@artimis.biz

Phone: 347 767 5649 • Cell: 917 403 3764

