



Gatton Films
presents

BULB



INTRODUCTION

SYNOPSIS

BULB is an abstract comedy about a family whose most prized possession is their only light bulb.

OVERVIEW

BRYAN, the father of the household, holds control of this bulb with a tight grip. His wife, PHOEBE, and daughter, HELENA, are in constant admiration of him despite his unimpressive temperament.

Once the bulb breaks, Alan is faced with the dilemma of trying to bring light back to the home while still demonstrating that he's in control of the situation.



FILM INSPIRATION

Here is a list of films that serve as inspiration tonally for the film. The main inspiration is the work of Yorgos Lanthamos - deadpan delivery in the face of an abstract situation is the tone that we aim to achieve with BULB. While what's happening on screen is ridiculous and amusing to the audience, to the characters it is very real and serious.

Additionally, the somewhat mythological characteristics that both Bryan and the bulb itself hold, similar to that in *The Lighthouse*, will help to drive an unsettling feeling throughout the film.



The Killing of a Sacred Deer
2017



The Lobster
2015



Dogtooth
2009



The Lighthouse
2019



WORLD INSPIRATION

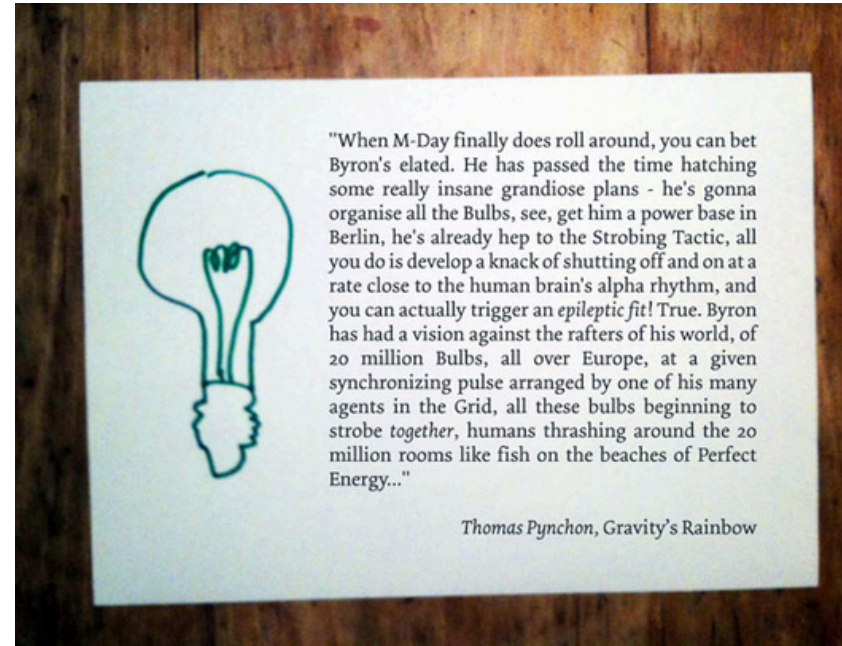
Throughout human history, light and fire have often served as a metaphor for power and immortality. From the story of Prometheus in Ancient Greece through to the story of the immortal Byron the Bulb in Thomas Pynchon's *Gravity's Rainbow*, literature has always had an idea that controlling the light brings with it ultimate power.

In the 1920's/1930's, The Phoebus Cartel came together to limit the lifetime of lightbulbs to 1000 hours in the first large scale instance of planned obsolescence for the pursuit of profit>all.

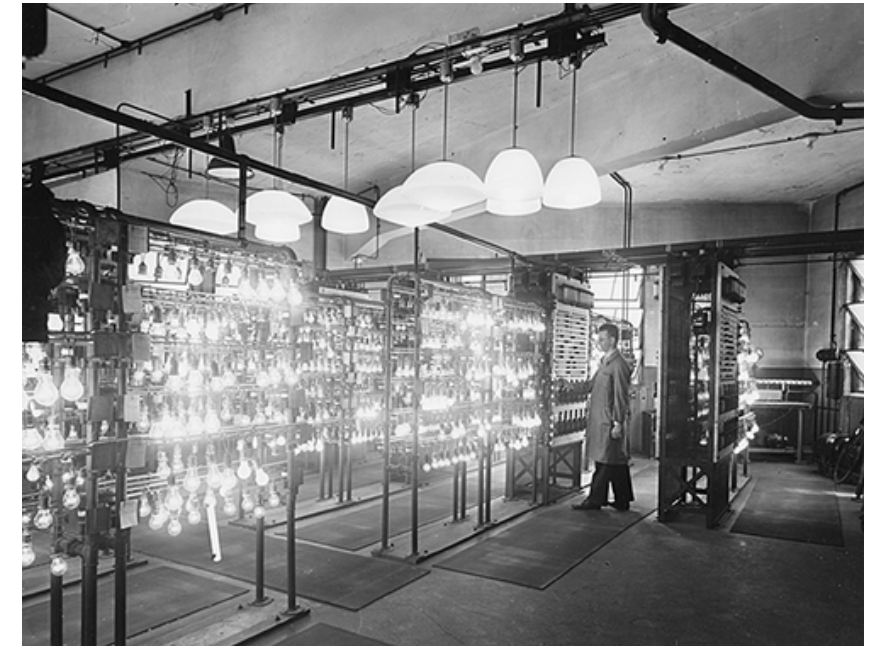
All these stories come to influence this short film, *BULB*, and asks the audience the questions.

What does the light mean to these characters?

What does the light really represent?



Gravity's Rainbow
1973



The Phoebus Cartel
1925-1939

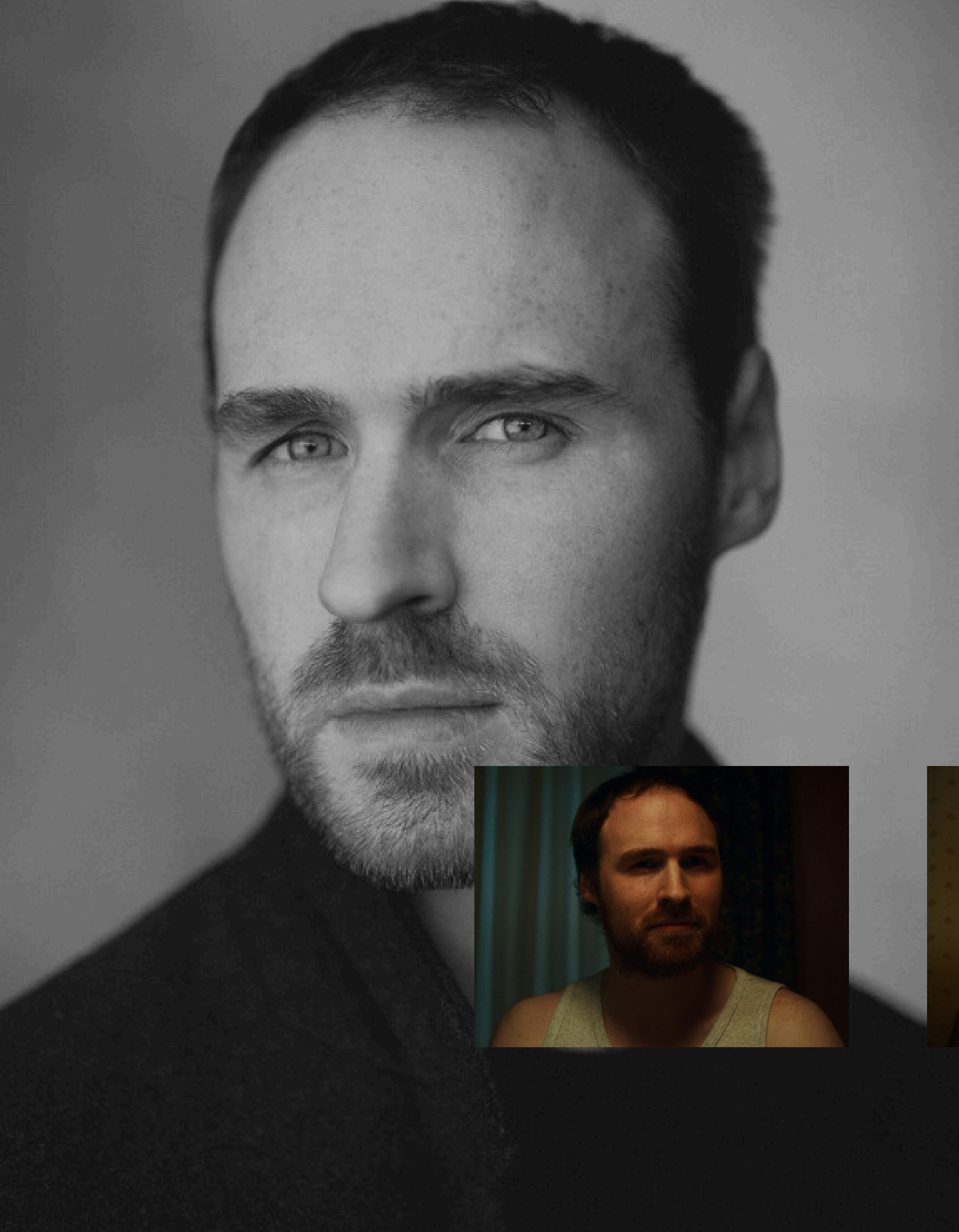


Prometheus
750 B.C.



CAST





BRYAN

THOMAS LOONE

BRYAN is revered by his family as an almost god-like figure due to his power/mastery over the lightbulb. Their unjustified awe of him disguises his insecurities and failings. To the family, Bryan is infallible.

However, his obsession with light and the bulb is driven by a deeper fear of the unknown.





PHOEBE

SARAH TIPLADY

It's not quite clear why PHOEBE, a clearly intelligent and switched on woman, is with someone like her husband. Has she been tricked into this situation or is she complicit?

A moment of defiance against her husband keeps us guessing.



HELENA

ALBA LLOYD-PRIETO

HELENA has never known a world outside of the home she grew up in. She takes everything said by her parents at face value and lacks the experience to question her situation, but underneath there's a bravery waiting to come out, one day.



CREW





GUY TAYLOR

Writer + Director

BIO

With a background in engineering, Guy Taylor made the shift to the creative world to pursue his love of story telling. Through both directing his own stories and producing films for others, he strives to create films and creative environments where unique perspectives and ideas can be told.

He created Gatton Films in 2020 which has since gone on to become an internationally award winning production company with selections at both BAFTA and BIFA Qualifying festivals as well as a nomination at The National Film Awards in 2025.

DIRECTOR'S STATEMENT

The intent with Bulb was to make a film that really explores the absurd. I think there's a lot of humour to be found when powerful figures, such as Bryan (who literally controls light in his family's eyes), are juxtaposed by their pathetic character.

When a film has such a tone, it's important to make sure the cinematography, performances and sound are immaculate in order for the story beats to land in a satisfying and comedic way, which is something I think we achieved with Bulb.



KEY PRODUCTION TEAM



Sean Murrough
PRODUCER/ASSISTANT DIRECTOR



James Handley
DIRECTOR OF PHOTOGRAPHY



Kieran Moore
PRODUCTION DESIGNER



Alyssa Medina
COLOUR GRADER



Thomas J. R. Moss
SOUND DESIGNER



Chloé Palmer
COSTUME DESIGNER



REMAINING TEAM

casting director

Charlotte Pathe

associate producer

Joshua Cardrick

first assistant camera

Etai Shomri

second assistant camera

Juliette Peucelle

gaffer

Ngawang Lektso

hair & make up artist

Natalie Williams

sound recordist/mixer

Reuben Vick

production assistant

Giulia Accaputo

Alexandra Dardart

composer

Jean-Loup Pinson

unit stills photographer

Billy Emery

Sol Ji Park

editor

Guy Taylor

editing supervisor

Ian Killick

stop-motion animator

Alistair Nicholls

poster designer

Kieran Moore

thanks to

Oliver Morris

Ben Siddons

Harry Tucker

Oskar Scarsbrook



KEY INFO

GENRE Comedy

LENGTH Short

TOTAL RUNNING TIME 11 minutes 48 seconds

ORIGINAL LANGUAGE English

PRODUCTION COMPANY Gatton Films Ltd

PRODUCTION YEAR 2025

PRODUCTION LOCATION London, United Kingdom

EXHIBITION FORMATS Digital Projection (DCP)
.mov

ASPECT RATIO 4:3

LANGUAGES English

AUDIO FORMAT 5.1, stereo



FESTIVALS

FOCUS WALES FILM FESTIVAL

Official Selection

BAFTA+BIFA QUALIFYING



SUNRISE FILM FESTIVAL

Official Selection

BIFA QUALIFYING



GLASGOW INDEPENDENT FILM FESTIVAL

Official Selection



VENEZIA SHORTS ITALY

Official Selection



BEVERLY HILLS FILM FESTIVAL®

Official Selection



LONDON FRAMES INTERNATIONAL FILM FESTIVAL

Winner, Best Comedy



PARIS ART FILM FESTIVAL

Winner, Best Short Film



LOCO LONDON COMEDY FILM FESTIVAL

Official Selection



FISHEYE INTERNATIONAL FILM FESTIVAL

Official Selection



HOUSTON COMEDY FILM FESTIVAL

Official Selection



THE ROMFORD FILM FESTIVAL

Official Selection



STILLS





BTS



BTS



WITH THANKS TO

This film would not have been possible without kit from VMI, post-production services from Studio-RM and of course the wonderfully talented cast and crew.



STUDIO RM



CONTACT

FILM CONTACT

guy.taylor@gattonfilms.com

+447907 719702

www.gattonfilms.com



GATTON
FILMS