

# Miserere Tui



Brief film presentation

Director Yuri Oh

---

# Overview

## 01. Title

### Miserere Tui

## 02. Brief Synopsis

**"Divine grace? No. It was a parasitic thirst."**

To Julian, Mikael isn't just a rival; he is an immovable wall built of celestial perfection. Driven by a jealousy, Julian takes a forbidden chance to transplant Mikael's talent into his own throat.

The price for breaking the taboo is immediate and intoxicating. As Julian hits a transcendent high note he never thought possible, the world trembles. But at the very peak of his glory, something shifts. Deep inside, a cold, visceral sensation begins to claw its way up. Julian wanted the voice, but he did not know what came with it.

## 03. Logline

The Salieri of the Choir: Driven by a searing jealousy for his Mozart-like rival, a mediocre second-in-command swallows a forbidden miracle whole.

He steals the voice of an angel, only to find himself suffocating under the crushing weight.

# MISERERE TUI



The weight of a golden wing

A FILM BY YURI OH



The weight of a golden wing

# MISERERE TUI

A FILM BY YURI OH

Poster

# Production Journal



## Workflow

01

### Planning & Prompt Engineering

Tools: ChatGPT, Google Gemini

02

### Image Generation & Editing

Tools: Midjourney, Nano Banana Pro, Adobe Photoshop

Visual Concept: Cold, minimalist color palettes to evoke digital alienation.

Midjourney: Core character and background generation.

Nano Banana Pro: Iterative refinement and detailed cut adjustments.

Photoshop: Advanced skin retouching and final color grading.

03

### Video & Audio Production

Tools: Kling, ElevenLabs, Artlist

Video Generation: Transform produced images into cinematic video sequences via Kling.

Voice & Dialogue: Generate unique AI voices for each character's narration and dialogue.

SFX: Create immersive soundscapes and Foley using ElevenLabs.

BGM: Utilize licensed scores from Artlist to ensure copyright compliance.

04

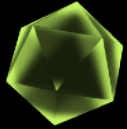
### Video Production & Post-Production

Tool : Premiere, Topaz Video

Post-Production: Execute final cut editing, color grading, and visual effects (VFX) using Adobe Premiere Pro.

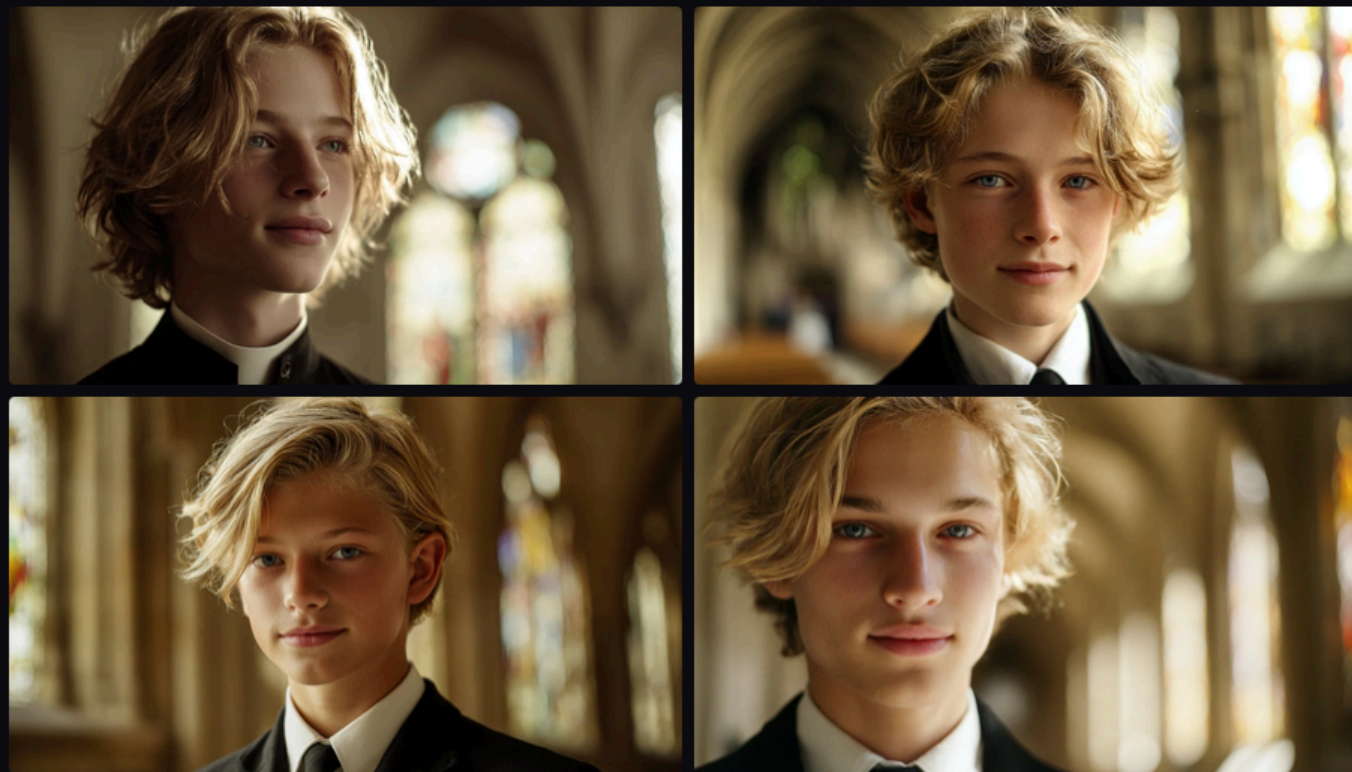
Upscaling: Enhance video quality and resolution via Topaz Video AI.

# Production Journal



## AI Tool Verification

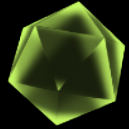
< Character Generation >



A close shoulder-up portrait of a breathtakingly beautiful 16-year-old blond choir boy in a European Christian boarding school in late spring, framed from the shoulders up, soft natural afternoon light filtering through cathedral windows and resting gently along the contours of his face, delicate ash-blond hair glowing subtly as if touched by a halo of light, smooth luminous pale skin with porcelain clarity, perfectly balanced oval features with refined symmetry, clear light blue eyes calm and unreadable yet faintly knowing, gaze steady and direct but without visible aggression, a restrained angelic smile barely lifting the corners of his lips, long elegant neck partially visible above a crisp white shirt and narrow black tie, wearing...

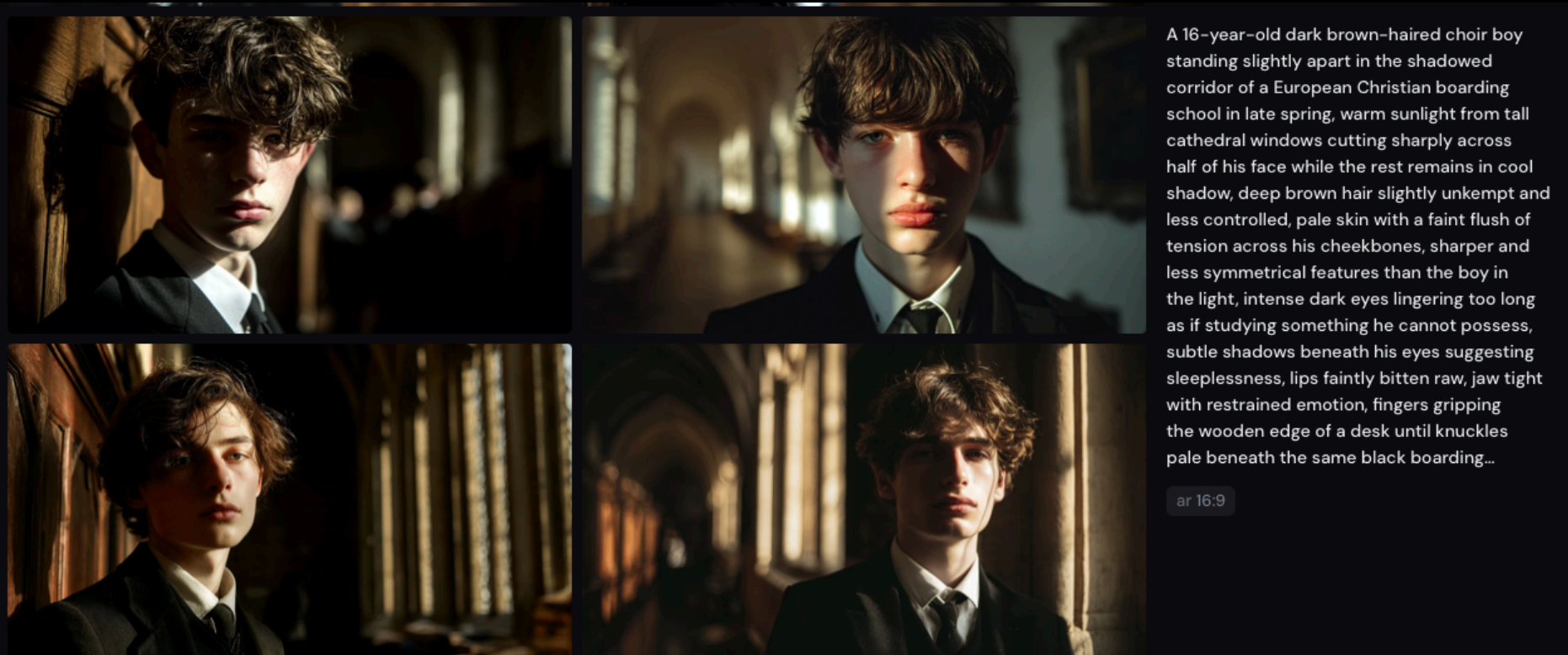
ar 16:9

# Production Journal

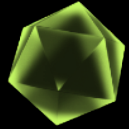


## AI Tool Verification

< Character Generation >

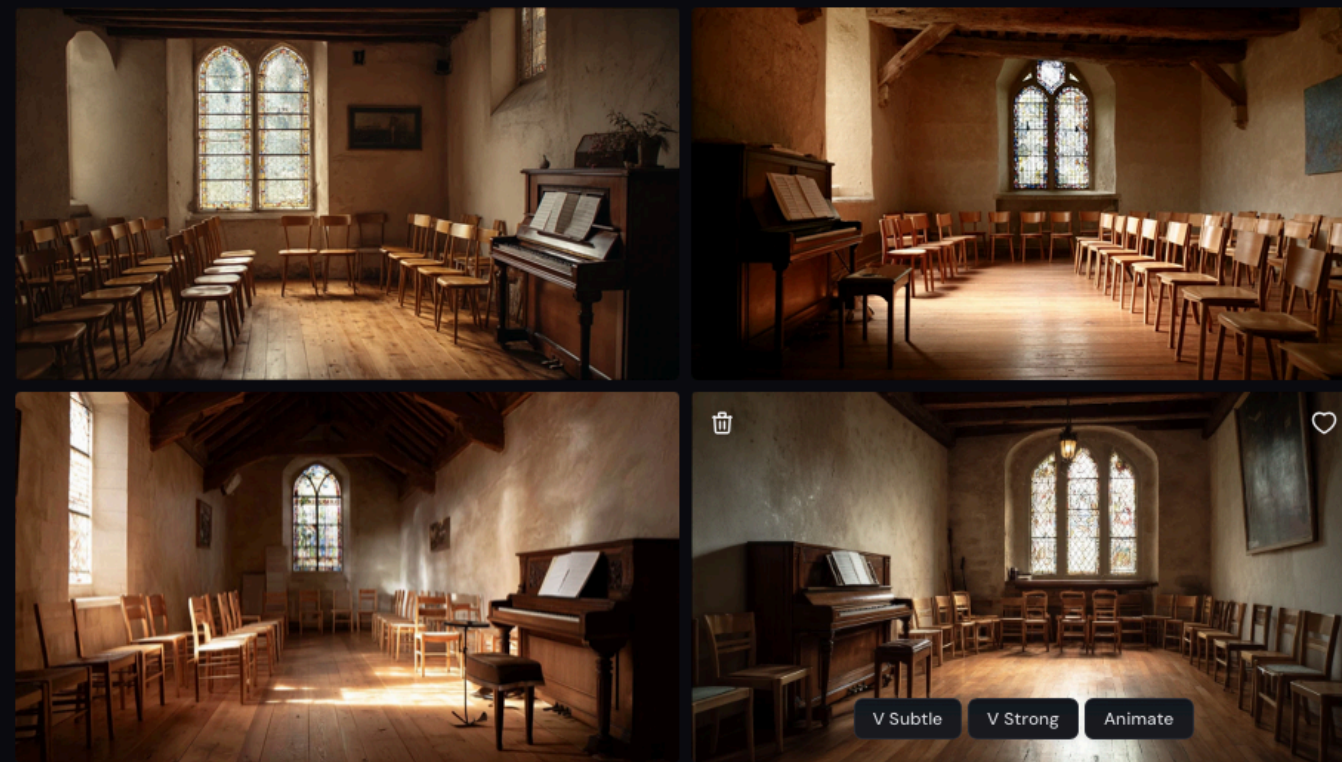


# Production Journal



## AI Tool Verification

< Background Generation >



A small choir rehearsal classroom inside a Christian boarding school in rural France in late spring, intimate scale rather than a grand hall, modest vaulted ceiling with exposed wooden beams, one tall stained-glass window diffusing soft colored light into the room, warm late spring sunlight blending with gentle stained-glass hues across light oak flooring, a few rows of simple wooden chairs arranged closely together, compact upright piano near the wall, sheet music neatly stacked on a narrow wooden stand, pale limestone walls with subtle texture, atmosphere reverent but personal and contained, quiet and expectant mood, no people present, shot on ARRI Alexa 35 with ARRI Signature Prime lens, balanced exposure, soft...

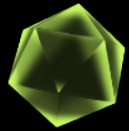
ar 16:9

V Subtle

V Strong

Animate

# Production Journal

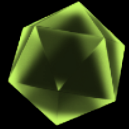


## AI Tool Verification

< Scene Generation >

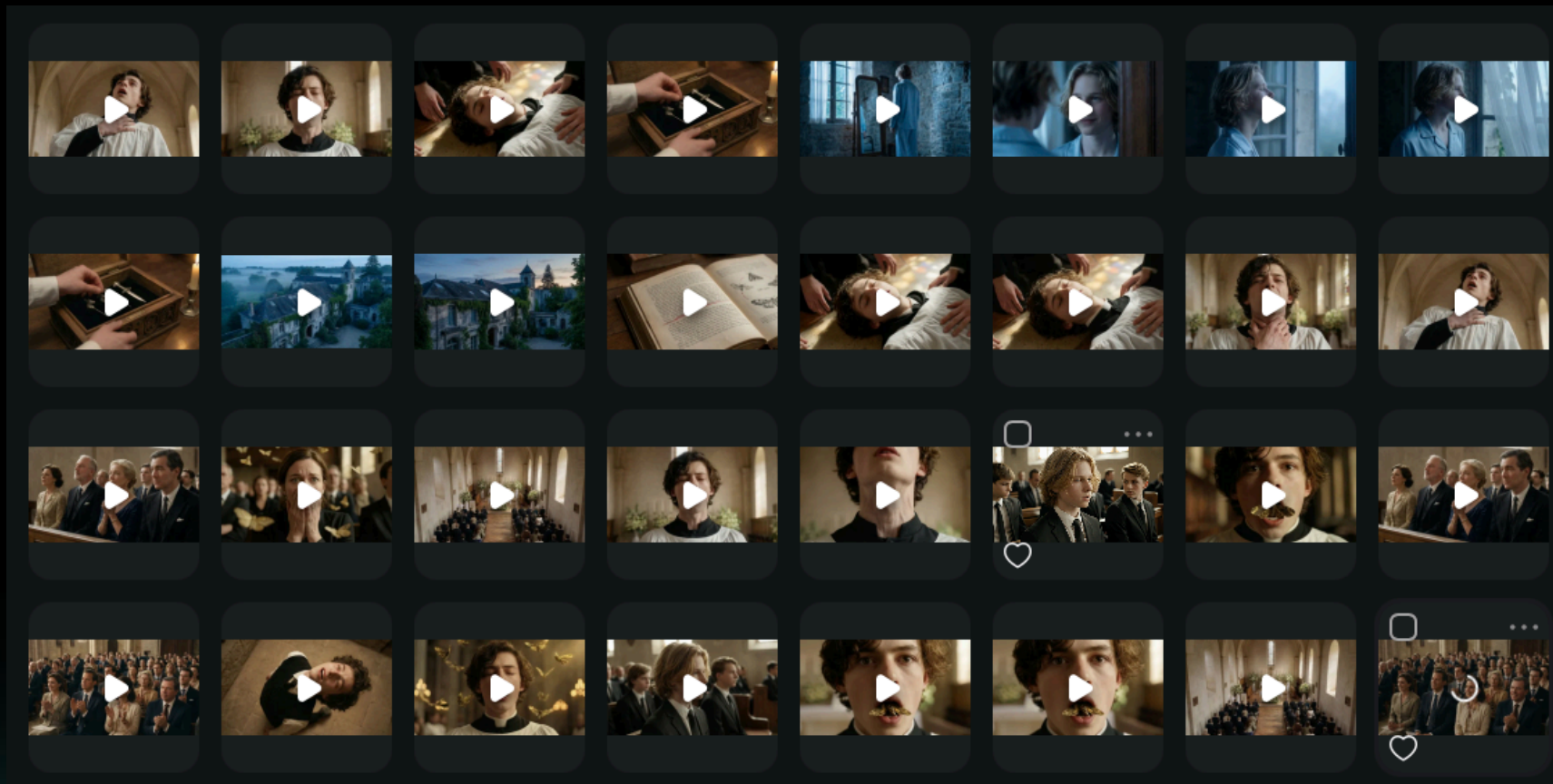


# Production Journal

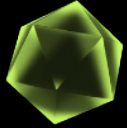


## AI Tool Verification

< Video Generation >



# Production Journal



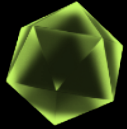
## AI Tool Verification

< Voice Generation >

The screenshot displays an AI voice generation interface. On the left, a text input field contains the prompt: "[whispering] I was sure. Moths are clever. They knew to leave the barren earth for a land fresh and fertile. But you were too rushed, Julian. You poured out all your blood before you even learned how to soothe them." Below the text is a "+ Add speaker" button. At the bottom, two audio generation results are shown: "Generation 1" and "Generation 2", each with a play button, a waveform, and a download icon.

On the right, a "History" panel shows a list of generated audio clips. The top clip is labeled "Today" and contains the text "[whispering]I was sure. Moths are clever. They knew to leave..." generated by "미카엘2" 1 second ago. Below it, a "Yesterday" section lists four clips, each generated by "줄리안2" 23 hours ago, with the text "I can do it. [small pause] father. [small pause] let me do it. [s..". The bottom clip is labeled "2 days ago" and contains the text "[whispering]Miserere Tui, Julian [small pause]" generated by "미카엘2".

# Production Journal



## AI Tool Verification

< Music Generation >

Workspaces > My Workspace

Search Filters (3) Newest

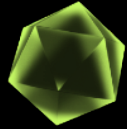
- 엔딩송 버전02 v5**  
A solemn and majestic sacred piece based on the Latin te...  
0:52
- 엔딩송 버전02 v6**  
A solemn and majestic sacred piece based on the Latin te...  
0:54
- 엔딩송 버전02 v5**  
A solemn and majestic sacred piece based on the Latin te...  
0:49
- 엔딩송 버전02 v6**  
A solemn and majestic sacred piece based on the Latin te...  
0:46
- 줄리안02\_부실 v5**  
A solo male soprano singing entirely a cappella in a vast ca...  
0:39
- 줄리안02\_부실 v5**  
A solo male soprano singing entirely a cappella in a vast ca...  
0:59

**엔딩송 버전02**  
Add a Caption

Remix/Edit

A solemn and majestic sacred piece based on the Latin text:  
Mors et vita duello conflixere mirando:  
dux vitae mortuus, regnat vivus,  
Scimus Christum surrexisse a mortuis  
vere: tu nobis, victor Rex, miserere,  
The music opens with a powerful pipe organ prelude, deep pedal tones and rich harmonies resonating through a vast cathedral, creating awe and sacred gravity. After the introduction, a single male voice enters — solo only, no choir — pure, reverent, and liturgical in style. The melody moves from dark solemnity toward radiant triumph, reflecting resurrection and victory over death. Intensity gradually builds to a noble climactic high note at "victor Rex," strong and luminous but not theatrical. The final phrase "miserere" softens into a prayerful resolution, the voice fading into stillness over sustained organ harmony. Instrumentation: pipe organ and solo male voice only. Acoustic.

# Production Journal



## AI Tool Verification

< Licensed Music & Copyright >

### Original Score

- **Lyrics & Composed by Yuri Oh**
- **Miserere Tui, Regnat Vitus, Aurum ex Cinere**

### Licensed Tracks

- **Fear no evil** – Ardie Son
- **Omega** – Ardie Son
- **Sad Music Ident** – Artlist Musical Logos

*All additional tracks used under a professional license from Artlist.*

The screenshot shows the Artlist website interface. The top navigation bar includes the Artlist logo, a search bar, and links for Home, AI Toolkit, Stock Catalog, Studio, and Coming Soon. A user account link 'Click to change password' is visible. The left sidebar contains navigation options: Music, SFX, Footage, Templates, LUTs, Tools, Spotlight, Favorites, and Downloads. The main content area is titled 'My subscription' and features a 'Music Pro' subscription card. The card indicates the user has been subscribed since January 26, 2026, and provides a '2026 - 2027 License Number' with a 'Download license' button. A note states: 'To avoid claims on your videos, [add your channels](#) to the Clearlist.' Below the card, three benefits are listed with checkmarks: 'Unlimited music downloads', 'Pro license', and 'Covers everything from personal to commercial use'. An 'Upgrade to Music & SFX Pro' button is located in the top right corner of the subscription card.

**Thank you**

---