



Night Feeding

is a dark fairytale,
about an ancient, malevolent creature
that seeks out vulnerable new parents
and binds them into horrifying life-
long servitude, in exchange for their
lives.

It touches on themes of women's
reproductive rights, the chaos of nature
and ancient folklore. The film will
begin in a grounded, yet dreamy way,
as our protagonists struggle with their
lack of sleep.

As the story progresses and the evil
force exerts more influence, we enter its
realm — the look and mood changes to
a literal nightmare, with frightening
glimpses of the creature and a space
with limited visibility and occasional
pops of color, texture and otherworldly
phenomena.

Set in the present, Lillian and Fred's home is comfy and warm, with some stylish touches — solidly middle-class.

Daytime scenes in the home will use a neutral palette, punctuated with splashes of pastel whenever we come across items that belong to the baby.



Night-time scenes in the home are dark, but with rich, realistic lighting and color. More contrast with the deep shadows and primary colors of baby-toys, giving suspenseful moments a sinister feel.

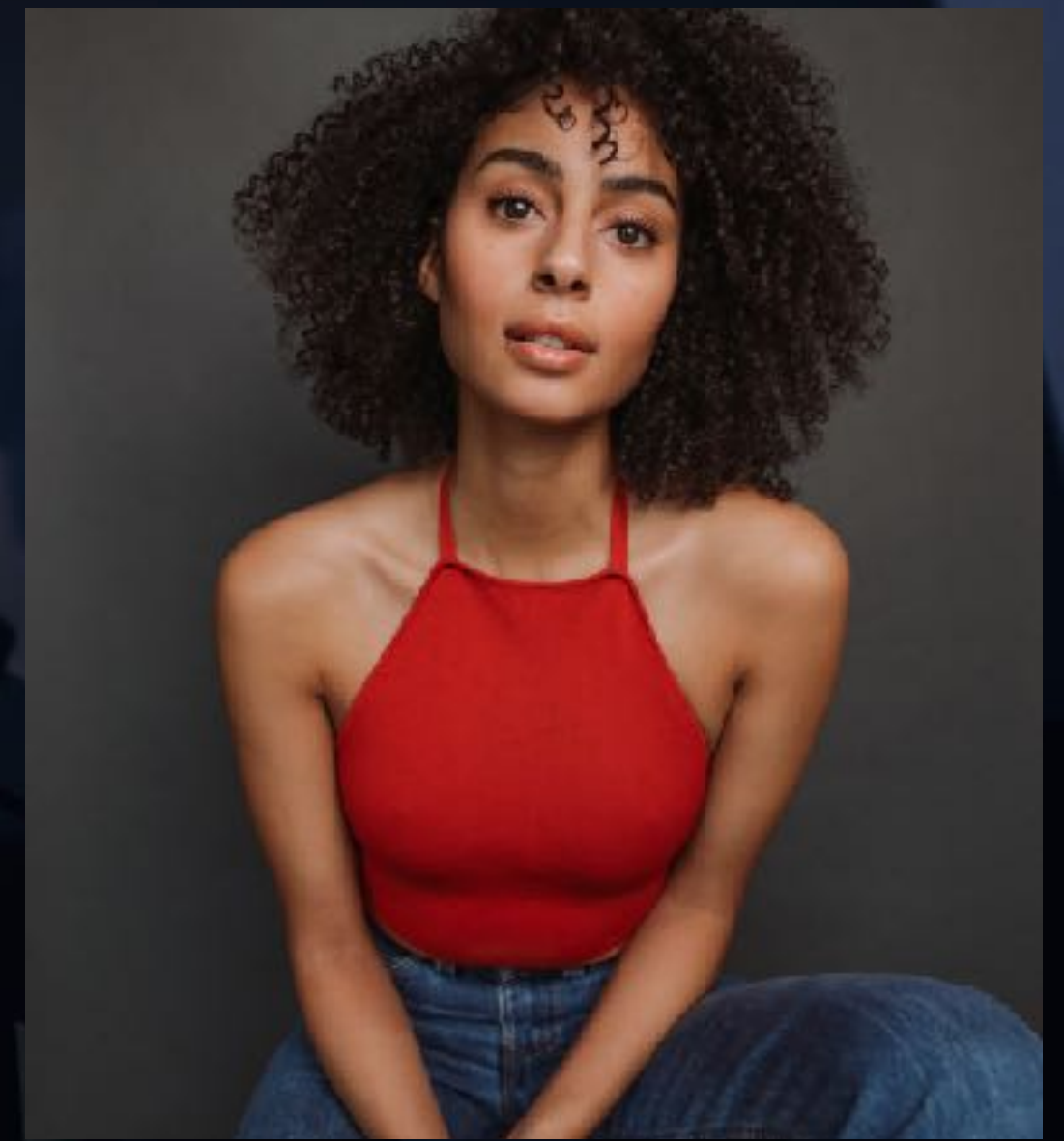
The Underworld is washed out grays, with a constant, thick fog obscuring the view. Shadows move within the fog in hues of black and blue.





Lillian


“Lil” is 36 and pretty. She’s got a college education and can support herself on her salary as a bank branch manager. She’s articulate, kind and currently very exhausted.



Fred

Fred “Freddie” is 38 and boyishly handsome. He’s working on his graduate degree and works in medical supply sales. He’s smart, funny and slightly less exhausted than his wife.





“Shhhhhh... Shhhhhh....
do you hear the others?”

The moans and sighs of female voices float past.

“Do you hear them? Cry and sigh, cry and sigh.

They broke the promise, they tried to run.

Now they float on the fog,

music to my ears,

here with me forever.”



Essie Davis and Noah Wiseman
'The Babadook', 2014

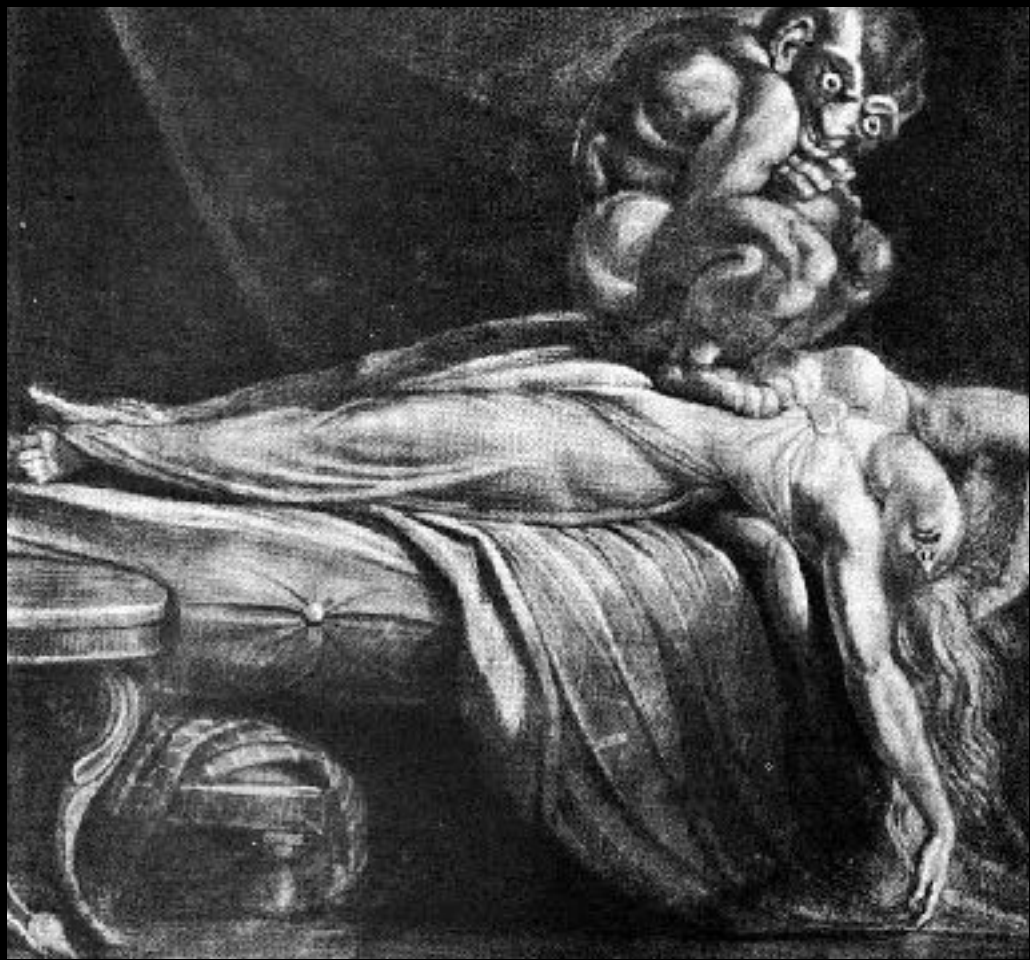


Sigourney Weaver and Carrie Henn
'Aliens', 1986



Shauna Macdonald in 'The Descent', 2005





Folk Tales
Fairy Tales
& Myths





Lim Soo-jung in
'A Tale of Two Sisters', 2003

A woman in a white nightgown stands in a dark hallway, looking at a framed picture on the wall. The hallway is dimly lit, with a small light source on the floor. The scene is set in a room with several framed pictures on the wall.

Night Feeding

baby is hungry