

Open Your Eyes

(Semidocumentary, 360VR, 14'59")



The origin of the project

The main background of this film is the Great East Japan Earthquake and nuclear disaster that occurred in 2011.

Tokyo 2020 was bid as a "reconstruction" Olympics after that devastating disaster. However, the reality is that people have been evacuated from the land where the nuclear power plant that melted down is located and cannot live there. Concealing the tragic reality, Tokyo 2020 was held.

The disconnection between the two places and people, Tokyo and the areas with nuclear power plants that melted down, is the origin of the project.



The social impact


These disconnections between two places and people are not just a domestic problem of Japan. It is related to the existing unfair inequality between the center and the periphery all around the world, the parasocial relationship between production and consumption areas, and lack of understanding of others or rejection of others.

These relationships are creating disconnections all around the world that refuse dialogue and cut off others.

Ahead: Non-residential area

No entry

原子力災害現地対策本部



Fukushima Daiichi
Nuclear Power Plant
that melted down

Citizen Collective

This project was originally conceived as a collective, citizen-led performance in front of the Tokyo Olympic opening ceremony venue. The VR live streaming project connected Tokyo with areas affected by the nuclear disaster. While VR live streaming is often commercially used for virtual tourism, the aim of this project was a form of 'dark tourism'.

The original plan was to release a VR documentary as a media art piece collaboratively created by a citizen collective. However, during the collaborative process among project members, some felt that simply producing a “documentary” would not be sufficient to challenge or contrast the powerful image of Tokyo Olympics. As a result, the collective decided to abandon the original plan in favor of this semidocumentary featuring the “True Torchbearers,” which was filmed.



(Crew) Why should we move from here?
(Police officer) We will have full regulation from 4 p.m.

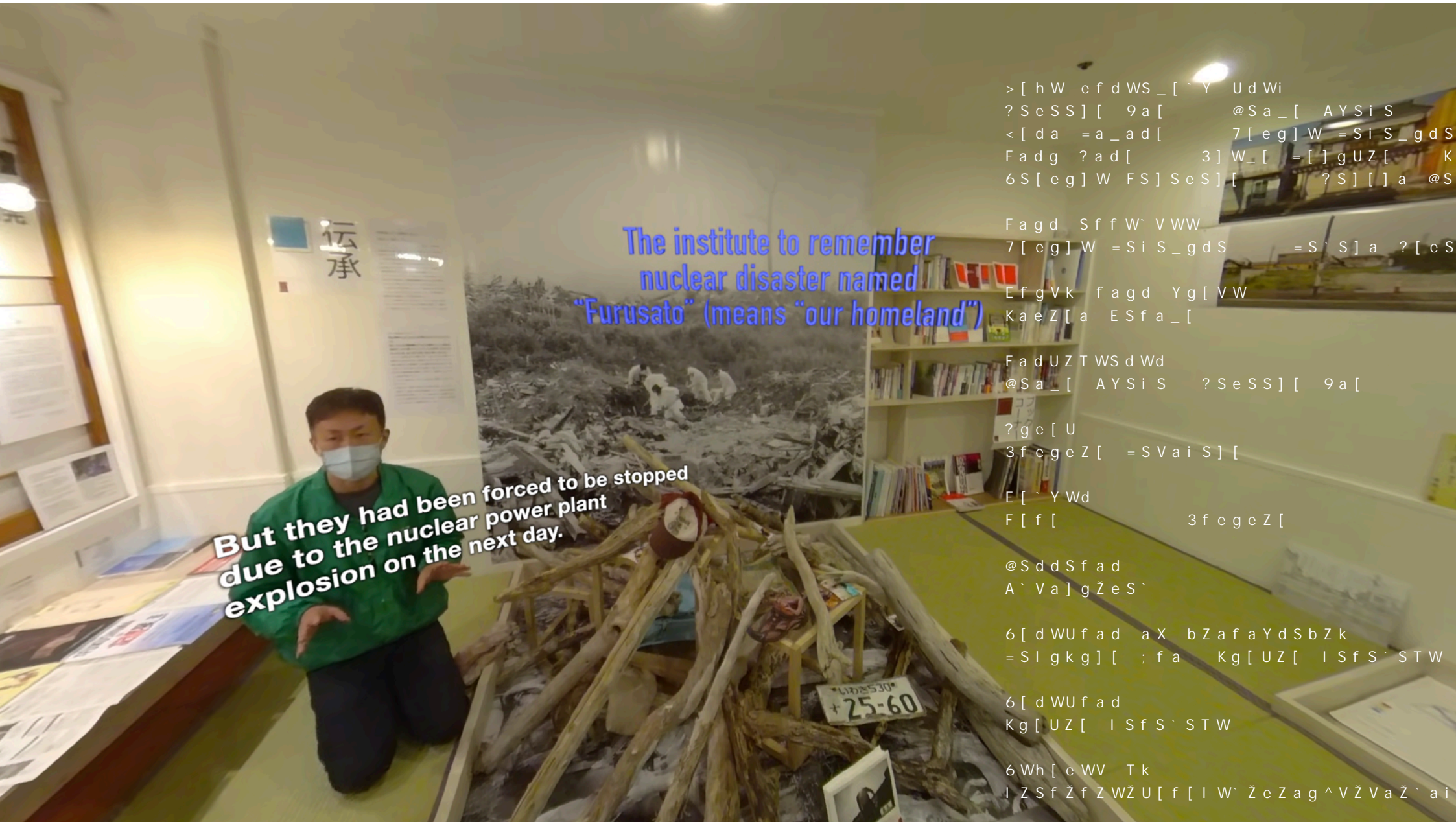
Visual and technical approaches

This VR360 film intentionally makes the videographer visible—sometimes as a performer—unlike typical VR360 films that hide the camera operator. By showing both Tokyo and nuclear disaster areas, and blending roles between videographer and subject, the film visually expresses the disconnection and reconnection between these places and people. This crossing of boundaries aims to create a bidirectional, interactive relationship, reflected in its unique visual approach.

Rethinking Social Boundaries through VR

Director Watanabe's current theme is to realize fair, peaceful, and reciprocal human relationships in society. He believes that VR media can help achieve this. He has been continuously covering the nuclear disaster since 2011. Social divisions between center and periphery, and between producers and consumers, are often overlooked or ignored. Through this film, he hopes viewers will become aware of these divisions and reflect on them.





**But they had been forced to be stopped
due to the nuclear power plant
explosion on the next day.**

The institute to remember
nuclear disaster named
"Furusato" (means "our homeland")

伝承

25:60

>[hW efdWS_[^Y UdWi
?SeSS][9a[@Sa_[AYSi S
<[da =a_ad[7[eg]W =Si S_gdS
Fadg ?ad[3]W_[=[]gUZ[K
6S[eg]W FS]SeS][?S][]a @S

Fagd SffW`VWW
7[eg]W =Si S_gdS =S`S]a ?[eS
EfgVk fagd Yg[VW
KaeZ[a ESfa_[

FadUZTWSdWd
@Sa_[AYSi S ?SeSS][9a[

?ge[U
3fegeZ[=SVai S][

E[^YWd
F[f[3fegeZ[

@SddSfad
A`Va]gZeS`

6[dWUfad aX bZafaYdSbZk
=SIgkg][;fa Kg[UZ[ISfS`STW

6[dWUfad
Kg[UZ[ISfS`STW

6Wh[eWV Tk
I ZSfZfZWZU[f[I W`ZeZag^VZVaZ`ai