



Mommy's home.



HOUSEWIFE

STARRING

SHANNON COLLIS

COLLEEN GRATE

MIRANDA PARKIN

ANDREI DOLEZAL

A FILM BY Greta Guthrie & Jake Lazarow
BASED ON THE CHARACTER BY Miranda Parkin

Production Information



Haunted Doll Pictures

Jake Lazarow & Greta Guthrie

<https://ggjl.weebly.com>

ggjlproductions@gmail.com

GG: (203) 610-9959

JL: (609) 678-7876

IG: [@haunteddollpictures](#) |

[@gsmallzmusic](#) | [@jakelazarow](#)

TikTok: [@hanselcharliguthrie](#)

parkinart

Miranda Parkin

<https://mparkinb.wixsite.com/parkinart>

mparkinb@gmail.com

IG: [@parkinart](#)

TikTok: [@parkinart](#)

Production Year | 2024

Country of Origin | United States

Runtime | 4 minutes, 36 seconds

Film Stocks | Kodak 500T & 250D 35mm

ENG | **COLOR** | **NR**



Logline

When a woman accidentally cuts herself on her forgotten dollhouse, she'll unwittingly awaken Housewife, a primordial monster with strange ideas about how to care for her children. Based on the character created by Miranda Parkin.

The Story

In a dusty attic, a tired woman struggles to bring a box of old children's toys up for storage. When she goes to add it to the pile under a ratty bedsheet, something blocks her path – a strange-looking dollhouse with windows stretching two floors and a set of double doors with a golden latch. The woman runs a hand over the dollhouse lovingly, only to nick her finger on a splintered piece of wood.

DRIP! DROP!

Blood falls onto the house. She tries in vain to rub out the stain, but it's too late; the blood has already seeped into the wood. The woman turns back to her work with a sigh, hiding the box of children's toys under the sheet. The dollhouse sits behind her, unmoving... until it starts to rise.

From behind her, a female figure takes shape. But not just any female figure – one with that familiar dollhouse for a head. Complete and total darkness inside the open maw of the front doors. *And she's coming right toward the woman...*

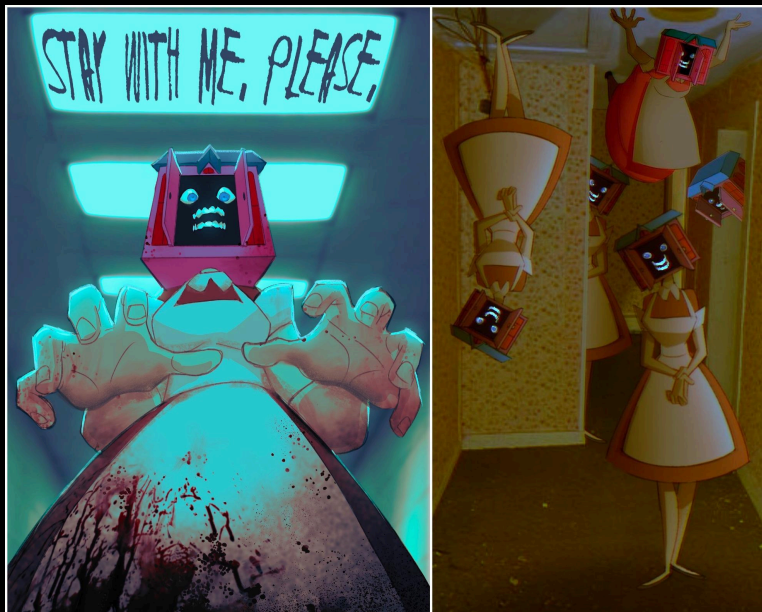


The Character

If you're a fan of the modern-day, lo-fi, creepypasta-y, cryptid-y horror movement, then almost by default you're a fan of Miranda Parkin and her menagerie of messed-up creatures and creations. Each is unique and sinewy in its own right, with limbs and mouths in all the wrong places. It's easy to imagine the world she's created, one where the dark corner of an abandoned warehouse or in the woods just off the highway is host to the monsters you thought only existed in nightmares.



(Artwork by Miranda Parkin)



(Artwork by Miranda Parkin)

Then, of course, there's Housewife. A 1950s-style housewife in a simple dress and white apron with a dollhouse where her head should be. She wants nothing more than to love you, but her caretaking methods are... Well, we'll just call them unorthodox. It's an idea that has been a calling card for Miranda's style of creature design. We wanted to bring her to life because we, like her hundreds of thousands of fans, believe that this character deserves her moment in the sun. Or, rather, in the shadows of your childhood bedroom, lulling you to sleep with her alien, robotic voice.

A Statement from the Directors

“Housewife,” based on the original character created by the incredible artist Miranda Parkin, is our third collaboration as directors, second time as writers, and first time shooting on 35mm. Executive Produced by Keisha Castle-Hughes (“Game of Thrones,” “FBI: Most Wanted,” “Star Wars: The Bad Batch” and Academy Award Nominee for Best Actress in WHALE RIDER) and stars Shannon Collis (INHERENT VICE, THE TENDER BAR, and our previous short, “The Tooth”) and Miranda, also an accomplished V.O. artist (“My Happy Marriage” and LOVE & GELATO) voicing her own creation. After further development with Miranda, we’re currently writing the “Housewife” feature adaptation as well.

Having never shot on 35mm before, it was important to us that the material would be elevated by the medium, and we were particularly captivated by the idea of a creature feature. As of late, we’d been inspired by the new age of movie monsters and their ability to balance the horror and the absurd — characters like M3GAN, TERRIFIER’s Art the Clown, and MALIGNANT’s Gabriel.

As digital art, the character of Housewife lived in the realm of the modern-day creepypasta and cryptid lo-fi horror movement. The lore is sprawling and ever-expanding, but for our adaptation, we were most excited about drilling down on our love for movie monsters, both past and present, and the question of female autonomy throughout the genre’s history. As an objectification of the illusion of the 1950s era housewife, we wanted it to feel lost in time, as if Housewife should have been terrorizing the corners of your mind for decades... if only the reel hadn’t been accidentally misplaced all those years ago.

Greta & Jake

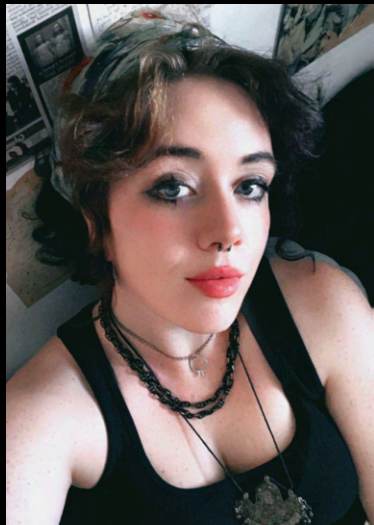


Crew Bios

Jake Lazarow & Greta Guthrie

Writers, Directors, & Producers

As an NYC-based screenwriting and directing duo, Jake and Greta have spent nearly a decade collaborating together in a partnership that dates back to their college years at Penn State, when Jake traded a trash bag full of movie theater popcorn for Greta to score his short film. Since then, they've directed three short films together. "Housewife" is their first time shooting on 35mm (and it won't be their last if they have anything to say about it!) They're currently in post on their next short while working with "Housewife" creator Miranda Parkin on a feature adaptation.



Miranda Parkin

Producer, Creator of Housewife

Miranda Parkin is an award-winning voice actor who has been represented by DPN Talent since age 5. You can currently hear her as the main character Miyo in the hit Netflix show My Happy Marriage, Hina in Netflix's Akuma Kun, Nagi in Square Enix's Neo The World Ends With You, and in a multitude of commercials. She is also a professional animator, illustrator, graphic designer, and character designer with a combined 300 thousand followers across social media, which is where Housewife first made her debut. Miranda loves what she does and wants to do it forever.

James Russin

Director of Photography

James was introduced to motion pictures at a young age in his hometown of Toronto. He pursued this interest at Penn State, where he happened upon Greta and Jake. After college, he moved to NYC and connected with actor/producer Andrei Dolezal. The rest, as they say, is history. Famously not a fan of horror, he found himself on the front lines as a 2nd AC for Damien Leone's TERRIFIER 2 before collaborating with Greta and Jake on "Housewife."



Cast & Crew

Shannon Collis as Julia

Colleen Grate as Housewife

Miranda Parkin as Housewife (Voice)

Andrei Dolezal as Mailman

•

Executive Producer | Keisha Castle-Hughes

Based on the character by | Miranda Parkin

Writer, Director, Producer | Greta Guthrie & Jake Lazarow

Producers | Miranda Parkin, Andrei Dolezal, Shannon Collis, James Russin

1st AD | Darcy Thompson

Director of Photography | James Russin

Art Director | Mat Ross

Script Supervisor | Adam Myers

Hair & Make-Up | Alina Rose Stout

Gaffer & Colorist | James McConnell

Key Grip | Cherry Alcantara

Editor | Nick Sivak

Sound Mixing | Keith Meenan

Sound Design | Jake Jurich

Composer | Greta Guthrie

