

A dark, blue-tinted photograph of a building at night. The building has a stone base and a dark roof. There are several cars parked in the lot in front of the building. A tall light pole with two glowing lights stands in the foreground. Bare trees are visible on the right side of the image. The overall scene is dimly lit, with the primary light source being the streetlights.

# Friend

A Christian Heflin Short Film

## Genre/Mood

Friend is a drama film with a dreary, yet intimate atmosphere filled with fierce tension mixed with heartfelt moments. The melancholy mood puts the viewer in the shoes of the characters as they grow an unlikely human connection centering around the themes of friendship, hopefulness & making a difference through kindness.



## Logline

After a tense encounter with a hostile customer puts a homeless man in danger, a lonely and depressed cashier forms an unexpected friendship with him that helps them both confront their pain and discover the quiet power of kindness and human connection.

## Synopsis

Stuck in his job as a boring grocery store cashier, “Clerk”, notices an aggressive customer, “Jerkface”, mistreating a homeless person, “Friend”. Clerk decides to vandalize the customer’s pickup truck as payback, leading to a brutal attack on Friend. After defending Friend, the two outcasts develop a unique friendship. But, Jerkface isn’t finished with them just yet.

# Main Character

Clerk: A young, dull grocery store cashier in his early 20's who may have had a rough childhood. Feeling lost and alone in his young adult life, while hating his tedious/repetitive occupation at the store. Tends to act before he thinks, failing to see the consequences of his actions until it's too late. Although he is timid and weak, he is courageous and willing to stand up for what is right. A sensitive kind heart of gold on the inside. A young Alex Wolff type.



# Supporting Character



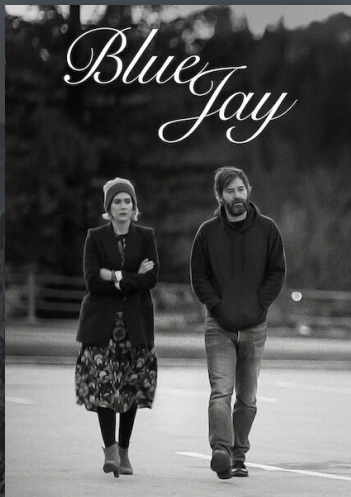
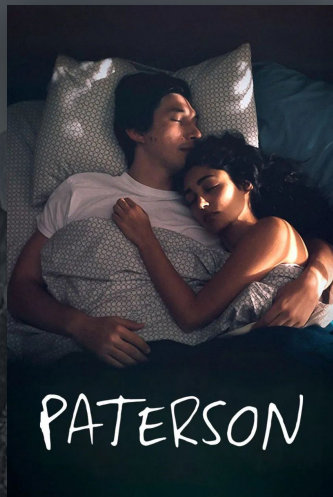
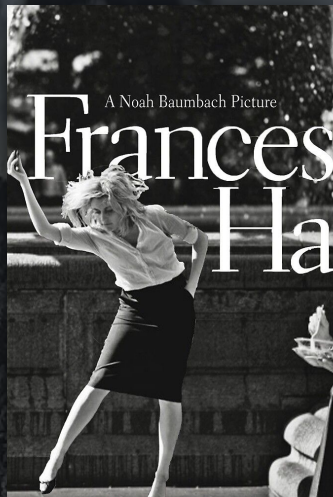
Friend: A middle aged, joyful soul whose unfortunate life has led him to be a lonely homeless man who lives in the alley behind the store. Always mistreated for the way he looks. A mute man, who has trouble communicating his feelings and processing information. The only thing he has, is an old worn down acoustic guitar and the memories of his lovely mother. Although he has his emotional episodes, he is a gentle human who loves playing the guitar. A scruffy Mark Duplass type.

# The Antagonist

Jerkface: A menacing, vile customer who has a particular hatred for homeless people. A cruel local bully with a appetite for violence. Toxic masculinity at its peak. Believes that a man works hard for their money and that nobody deserves a handout. A sadistic and intimidating blue collar type who gives off a Leo Johnson in Twin Peaks presence.



# Similar Films



# The Locations

Goodwin & Son's Market - Crestline, CA



Lake Gregory - Crestline, CA



# The Look

EXT. Lake Gregory - Dawn

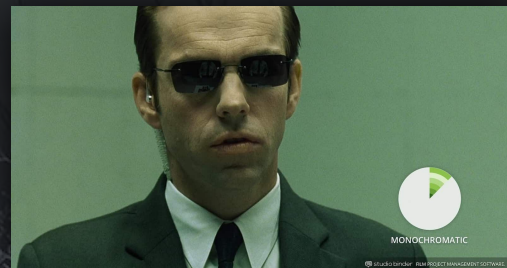
Monochromatic muted deep blues for the opening scene with Friend to represent his loneliness and his isolation as someone who has been outcasted by society.



# The Look

INT. Grocery Store - Night

Monochromatic greens for the interior of the grocery store to represent Clerk's emotional detachment from the world and the entrapment of his boring day to day repetition of being a cashier. Captures the dullness of his life.



# The Look

EXT. Grocery Store - Night & EXT. Alley - Night

Warm deep oranges from the parking lot and building lights for scenes with Friend and Clerk to represent their growing connection.

The alleyway will have a mixture of contrasting colors. Cold blues and warm oranges to showcase the higher tension conflicts. Complementing the gritty nature of the garbage ridden production design.

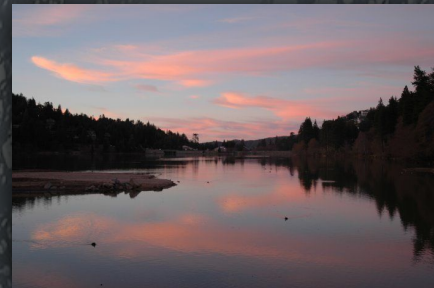


# The Look

EXT. Lake Gregory - Sunset

A warm dreamlike sunset for Friend's joyous childhood memories of his mother at the lake. Diving deep into nostalgia of his mother's love.

For Friend's scenes at the lake towards the end of the film, the warmth should slowly dissipate from the setting and transition to post sunset desaturated blues. Using cold colors to tap back into the feeling of loneliness and the dark subject matter.



# The Look

EXT. Lake Gregory - Night



A tender, emotional, intimate final scene lit by a “fire” to represent Clerk’s and Friend’s connection still burning as they are surrounded by the cold blues of the big world all around them.



# Visual Motifs



Friend's guitar and polaroid of his younger self with his mother at the lake are a visual representation of his happy memories. It is the only thing he has left to remember her by. Mementos of a happier time.



The chocolate bar is symbol of kindness and represents the bond that Friend and Clerk have developed. Ties into the theme of how a small gesture can go a long way.



# Estimated Budget: ~\$25,000

Locations: \$5,000

Insurance/Permits: \$2,000

Cast/Crew: \$10,000

Equipment: \$1,000

Travel/Lodging/Meals: \$5,000

Props/Wardrobe/Makeup: \$1,000

Production Design: \$1,000



\*All costs are estimations and subject to change

# Production Plan

Estimated Shooting Days: 5 Days

Post Production: 3 - 5 Months



## Fundraising

Applying to Grants,  
Screenplay  
Competitions, and  
Crowdfunding



## Pre-Production

Casting, Assembling  
Crew, Renting  
Equipment, Designing  
Shot Lists, Shooting  
Schedules, & Acquiring  
Insurance/Permits



## Production

Principal Photography



## Post Production

Editing, Color Grading,  
Score Composition,  
Sound Mixing, Film  
Festival Submissions

# Festival List

“Friend” will be submitted to the following Academy Award Qualifying Festivals:

San Francisco International Film Festival  
Raindance Film Festival  
Santa Barbara International Film Festival  
Tribeca Film Festival  
Seattle International Film Festival  
Hollyshorts Film Festival  
Sydney Film Festival  
Sundance Film Festival  
Toronto International Film Festival  
Slamdance Film Festival  
Chicago International Film Festival  
Aspen Shortsfest  
San Luis Obispo International Film Festival  
San Jose International Film Festival  
LA Shorts International Film Festival

San Diego International Film Festival  
Palm Springs International ShortFest  
Cinequest Film Festival  
Newport Beach Film Festival  
Brooklyn Film Festival  
Cleveland International Film Festival  
Melbourne International Film Festival  
Canadian Film Fest  
Dead Center Film Festival  
Atlanta Film Festival  
Nashville Film Festival  
AFI Fest  
Calgary International Film Festival  
New York Film Festival  
New York Shorts International Film Festival

# Writer/Director

Christian Heflin is a passionate creative who strives to tell engaging stories about the struggles of everyday life. A film school graduate who has written, directed, shot and edited multiple short films. Currently working professionally in the industry as a camera assistant with a strong desire to become a feature film director or a cinematographer one day. "Friend" is loosely based on his time as a grocery store cashier.



A dark, monochromatic photograph of a shoreline. On the left, there is a body of water with gentle ripples. On the right, a sandy bank is visible, featuring several pieces of weathered driftwood and a dense thicket of dry, tangled reeds or grasses. The overall scene is dimly lit, creating a somber and reflective atmosphere. The text "Thank You!" is overlaid in the center in a clean, white, sans-serif font.

Thank You!