A close-up photograph of a woman with blonde hair peering over a yellow ledge. Her eyes are looking directly at the camera. Overlaid on the image is the text "ALL EYES ON YOU" in a large, white, serif font. The word "YOU" is significantly larger than "ALL EYES ON".

ALL EYES ON
YOU

PRESS PACK

CONTACTS

Ted Clarke

Writer, Producer & Director
apollofilmproductions22@gmail.com

07709681161

Ollie Killip

Associate Producer,
Director of Photography
info@visiontower.co.uk

+44 7452 980553

Ethan Whyborn

Associate Producer,
Sound Supervisor
invitroproductions@gmail.com

+44 7923 570051

Thomas Pearce,
Composer

topearce66@gmail.com

+44 7510 156508

WELCOME

Thank you for taking the time to open up this press pack and step into the world of *All Eyes On You*. This film began as a playful idea about slightly off putting neighbours, but quickly grew into a story about guilt, judgement, and the uneasy feeling of being observed too closely. Set in a sleepy English village, it's a folk-horror that lingers in the blurred space between paranoid fantasy and horrifying reality – but at its heart, it's really about two people trying to find a fresh start, and discovering how hard it is to escape the past. This pack will introduce you to the cast and crew who helped bring the film to life, share a little about the process, and hopefully give you a sense of the care (and sleepless nights) that went into making it.

Thanks again for being here, and I hope you enjoy discovering *All Eyes On You* as much as we enjoyed making it.

– Ted Clarke, *Writer + Director*



SYNOPSIS

All Eyes On You follows paranoid couple Adam and Claire as they move to the peaceful countryside for a fresh start, but quickly become unsettled by a series of sinister interactions with their new neighbours, putting their trust - and relationship - to the test...

FULL SUMMARY

Newly together couple Adam and Claire move into a countryside home Adam has just inherited, hoping for a fresh start. But their arrival is quickly soured by a string of unnerving encounters: a postman who bursts uninvited into the house, a stranger photographing them in the park, and a mysterious car that seems to follow their every move. Convinced the neighbours have something against them, paranoia begins to take hold.

As the tension mounts, their own dark secret surfaces - Claire is Adam's brother's ex-wife, and the pair have fled their families' scrutiny in search of peace. Confronting this truth allows them to write off the villagers' behaviour as twisted coincidence or imagination, and for a moment they find calm.

But when Adam takes one last look outside, the truth is revealed: the entire village stands silently in their driveway, gazing up at the couple's bedroom window in unblinking judgement.

LAURA NOCK AS CLAIRE



Born in the midlands and currently based in Wales, Laura trains at the Wrexham Academy of Screen Acting, honing her craft whilst performing in the theatre and in film, receiving high praise and awards for both. Laura saw the casting call for our film on Facebook and was cast very quickly thanks to an amazing self-tape and a clearly passionate interest in the script.

Outside of her work on *All Eyes On You*, she has recently starred in the shorts *Forget Me Not* (2025, dir. Christopher Slater) and *The Abyssal Theatre* (2025, dir. Leo Carden), both of which have been award winning with Laura herself picking up Best Actress nominations at multiple festivals.



Claire is a quiet, reserved person at times, with a clear distrust for strangers and discomfort in new surroundings. Her standoffish demeanor is the result of deep guilt, even shame, from past secrets, that often prevent her from being able to relax.

CALLUM PARKER AS ADAM

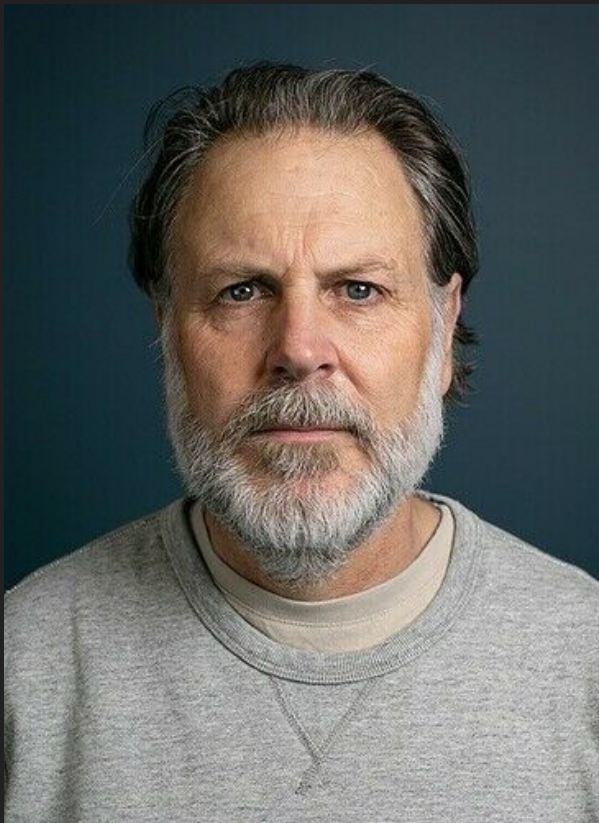


Callum Parker takes on the male lead in *All Eyes On You*, bringing a grounded intensity shaped by his strong background in theatre. Based in Liverpool, Callum has performed in a wide range of stage productions, honing a talent for emotional nuance and presence that translates powerfully on screen. He was recommended for the role by co-star Laura, having worked together previously in the short *Wings*, and her instinct for his fit with the part proved spot-on. *All Eyes On You* marks one of his biggest ventures into film – a step he embraced with dedication and focus, delivering a tense and vulnerable performance.



Adam is impulsive, unafraid to seek out what he desires and to confront perceived wrongs, but an enthusiastic, outgoing and charming person, with an infectious energetic personality.

BARRY SMITH AS MR HAWTHORNE



Based in Nottingham, Barry Smith is the most experienced member of the cast, with credits in major productions including *The Gentlemen* (2024), *House of the Dragon* (2022-), *Adolescence* (2025), *F1* (2025), and many more. Despite his work on high-profile projects, Barry continues to champion student and independent films, seeing them as an opportunity both to take on intriguing roles and to support the next generation of filmmakers. His generosity and experience on set proved invaluable to the team, offering guidance as well as inspiration. As Mr. Hawthorne in *All Eyes On You*, Barry delivers a performance of striking authenticity, and eerie presence that defines the village's unsettling atmosphere.



Mr. Hawthorne acts as a sinisterly exuberant patriarch of the village, the towering and cheerful neighbour seemingly never far away from Adam and Claire, along with his equally unsettling wife.

TAMMY HEATH AS MRS HAWTHORNE



Also based in Nottingham, Tammy Heath brings a wealth of experience to the role of Mrs. Hawthorne. With a long career spanning film, television, and modelling, she has developed a versatile screen presence that combines elegance with intensity. Tammy trains at The Actors Workshop Nottingham alongside Barry (onscreen husband Mr Hawthorne), who recommended the role to her, and her professionalism and collaborative spirit made her an invaluable addition to the cast. As Mrs. Hawthorne in *All Eyes On You*, Tammy embodies warmth edged with unease, perfectly complementing Barry's performance and helping to establish the village's uncanny, judging atmosphere.



Mrs. Hawthorne immediately greets the newcomers Adam and Claire with overly friendly fervour, parroting every word of her husband. But when she spots Claire's old wedding ring, her demeanor starts to sour.

HARIS KHAWAJA AS THE POSTMAN



Haris Khawaja makes his acting debut in *All Eyes On You* as the unnervingly friendly and inhuman postman.

A film and journalism student at De Montfort University, Haris has previously worked behind the camera in sound, editing, and cinematography, but was offered the small role by the director on a whim, with only a month before the shoot was set to begin. What began as a chance opportunity quickly became a highlight of the film, with Haris delivering a scene-stealing performance that blends humour and menace in equal measure. His natural screen presence surprised the whole cast and crew – and suggests he may well have found a second calling in front of the camera.



Initially barging into Adam and Claire's new home uninvited, the couple are reasonably distrusting of the seemingly wholesome postman. But further conversation with him reveals much stranger, unnatural behaviours at play.

LUKASZ PONIATOWSKI AS THE BIRDWATCHER



Lukasz Poniatowski, another film student at DMU hailing from Poland, is a frequent collaborator of the director, having played the leading role in Ted's earlier short *RUN*. With a natural screen presence and an instinctive, almost silent film-style of acting, Lukasz brings physicality and intensity to every role he takes on. His ability to convey emotion through subtle expressions and movements makes him a standout performer and an automatic addition to the cast of any project Ted directs. In *All Eyes On You*, his understated yet compelling presence once again enriches the ensemble and adds to the film's atmosphere of unease.



LUKASZ PONIATOWSKI
"THE BIRDWATCHER"



Whilst at first appearing to be photographing Adam and Claire, upon closer inspection the birdwatcher seems to be an innocent bystander amidst the villagers' odd activities. But a sly smirk tells a different story.

LORRAINE TOCKER AS MS GRANGER



Lorraine Tocker makes her screen debut in *All Eyes On You* as the enigmatic Ms. Granger.

A longtime resident of Market Bosworth, the film's shooting location, Lorraine is a family friend of the director who generously and bravely offered to take part in the production, wanting to try something new and dive straight into the filmmaking world. Her involvement brought not only enthusiastic warmth to the set, but also a welcome sense of authenticity, adding a cast member who could use their familiarity with the setting against the protagonists. As Ms. Granger, Lorraine delivers a quietly memorable performance (with a signature look) that perfectly balances kindness with mystery, deepening the film's atmosphere of unease.



LORRAINE TOCKER
"MS GRANGER"

No one is further from the couple's suspicion than the sweet blind lady next door, who endearingly defuses their fears that her car has been following them around. But when backs are turned, the smiles fade away.

FULL CAST CREDITS

Claire	Laura Nock
Adam	Callum Parker
Mr Hawthorne	Barry Smith
Mrs. Hawthorne	Tammy Heath
The Postman	Haris Khawaja
The Birdwatcher	Lukasz Poniatowski
Ms. Granger	Lorraine Tocker
EXTRAS	Sophie Clarke, Iris Clarke, Mac Clarke, Nickie Clarke, Paul Gibbs, Tony Tocker, Joe Warner, Lee Warner, Louise Railton, Harriet Bishop, Neil Finn, Reuben Lawrence Overy, Thomas Parish, Ryan Spencer, Aaron Chohan, Harish Gogna, Theo Harris, Ethan Whyborn, Dee Patel, Josh Oxford

ABOUT THE CREW

TED CLARKE,

WRITER DIRECTOR,
PRODUCER, EDITOR



Ted Joseph Clarke is a filmmaker and current MA student in International Film Production at De Montfort University, Leicester. He has written, produced, and directed a range of short films both within his studies and independently, while also gaining experience across the Midlands in advertising, sports videography, and crew roles on other productions. With a particular passion for storytelling, Ted's current goal is to write and direct his first feature before the age of 25. *All Eyes On You* is his most ambitious project to date, bringing together a large team of collaborators from across the UK, funding the production entirely from his own pocket, and marking a significant step forward in his filmmaking journey.

OLLIE KILLIP, DIRECTOR OF PHOTOGRAPHY, ASSOCIATE PRODUCER, EDITOR



Ollie Killip is the Founder and Creative Director of Vision Tower Productions Ltd and served as Director of Photography on *All Eyes On You*. A lifelong visual storyteller, Ollie began experimenting with stop-motion films at just six years old before going on to study Film & Electronic Media at De Montfort University and Towson University, USA. Since then, he has collaborated with creatives around the world, continually honing his technical expertise and distinctive visual style. Selected for this project both as a close personal friend of the director and for his remarkable eye for detail, Ollie brought precision and artistry to every frame, helping to shape the film's unsettling atmosphere and haunting beauty.

ABOUT THE CREW

ETHAN WHYBORN, ASSOCIATE PRODUCER, SOUND SUPERVISOR



Ethan Whyborn is a filmmaker, musician, and artist currently studying Film at De Montfort University. As the director of the short *Earworm (2025)*, a project deeply rooted in experimental sound design, and a member of the band Saturn Republic, Ethan has developed a unique sensitivity to the creative possibilities of audio. Selected by director Ted Clarke for his expertise and innovative approach, Ethan served as both Sound Supervisor and Associate Producer on *All Eyes On You*. His meticulous work with atmosphere and soundscapes proved essential in building the film's tension and unease, adding an immersive sonic layer that lingers long after the credits roll.

DEEPANJALI PATEL, SOUND SUPERVISOR, HAIR & MAKEUP



Deepanjali "Dee" Patel is a multi-talented filmmaker and current Film student whose devoted passion for the craft makes her an indispensable presence on any set. On *All Eyes On You*, she took on the dual roles of Sound Supervisor and Hair & Makeup Designer, while also lending her energy and support across numerous other departments. Known for her reliability and drive, Dee was present at every shoot, often acting as a motivator and source of encouragement for both cast and crew. Her versatility, commitment, and enthusiasm embody the collaborative spirit behind the film, making her a key figure in bringing the production to life.

ABOUT THE CREW

MU LAKHI, PRODUCTION COORDINATOR



Since they first set their eyes upon the silver screen as a kid, Mu has been enamoured by the world of filmmaking. Now a graduate of Film at the Northern Film School in Leeds, Mu has written, directed and produced their own award winning short *Shroom Baby* (2022), as well as sought to work with like minded creatives in their home of the midlands. Having met Ted through a networking event, it was immediately obvious to the director that Mu's sheer passion and laser-focused organisation in their filmmaking would make them a perfect fit to join the crew of *All Eyes On You*. Mu ensured a tight ship throughout the production, keeping everything on schedule and being on hand to assist all departments.

THOMAS PEARCE, COMPOSER



Thomas Pearce is a musician and graduate of the University of Leeds, where he studied composition. With a background in both classical training and experimental soundscapes, Thomas has quickly established himself as a versatile and imaginative scorer for film. He is a previous collaborator with director Ted Clarke, having composed the electric score for the short *LIGHT*, as well as the award-nominated soundtrack for Ollie Killip's short *Suspect*. For *All Eyes On You*, Thomas crafted a tense and atmospheric score that amplifies the film's creeping paranoia, underscoring the psychological unease at the heart of the story, whilst providing a memorably beautiful piano track for the main theme.

FULL CREW CREDITS

Writer	Ted Clarke	Drivers	Harish Gogna Sophie Clarke Mac Clarke
Director	Ted Clarke	Editors	Ted Clarke Ollie Killip
Director of Photography	Ollie Killip	Hair & Makeup / Costume	Deepanjali Patel Kelis Richards
Composer	Thomas Pearce	Production Coordinator	Mu Lakhi
Sound Supervisors	Ethan Whyborn Deepanjali Patel	Producer	Ted Clarke
Gaffer	Lucca Haskins	Associate Producers	Ollie Killip Joseph Ringland Ethan Whyborn
Camera Operators	Ollie Killip Ethan Whyborn Joseph Ringland	Drivers	Harish Gogna Sophie Clarke Mac Clarke
Location Managers	Nickie Clarke Mac Clarke	Editors	Ted Clarke Ollie Killip
Casting	Ted Clarke Stefanos Bryant Ethan Whyborn Joseph Ringland	Behind the Scenes / Additional Photography	Mu Lakhi Harish Gogna Thomas Hibbit

SPECIFICATIONS

Shot on : 2x Sony A7S MKIII with 10-20mm, 105mm and 24-240mm lenses

Runtime : 22 minutes, 48 seconds

Date completed : 15th of August 2025

Picture : Colour

Language : English

Resolution : 4K UHD

Aspect Ratio : 2.35:1

Screener: 12.8 GB, 3840 x 2160p, 24fps, Stereo, 48khz

Subtitles available (In English)

