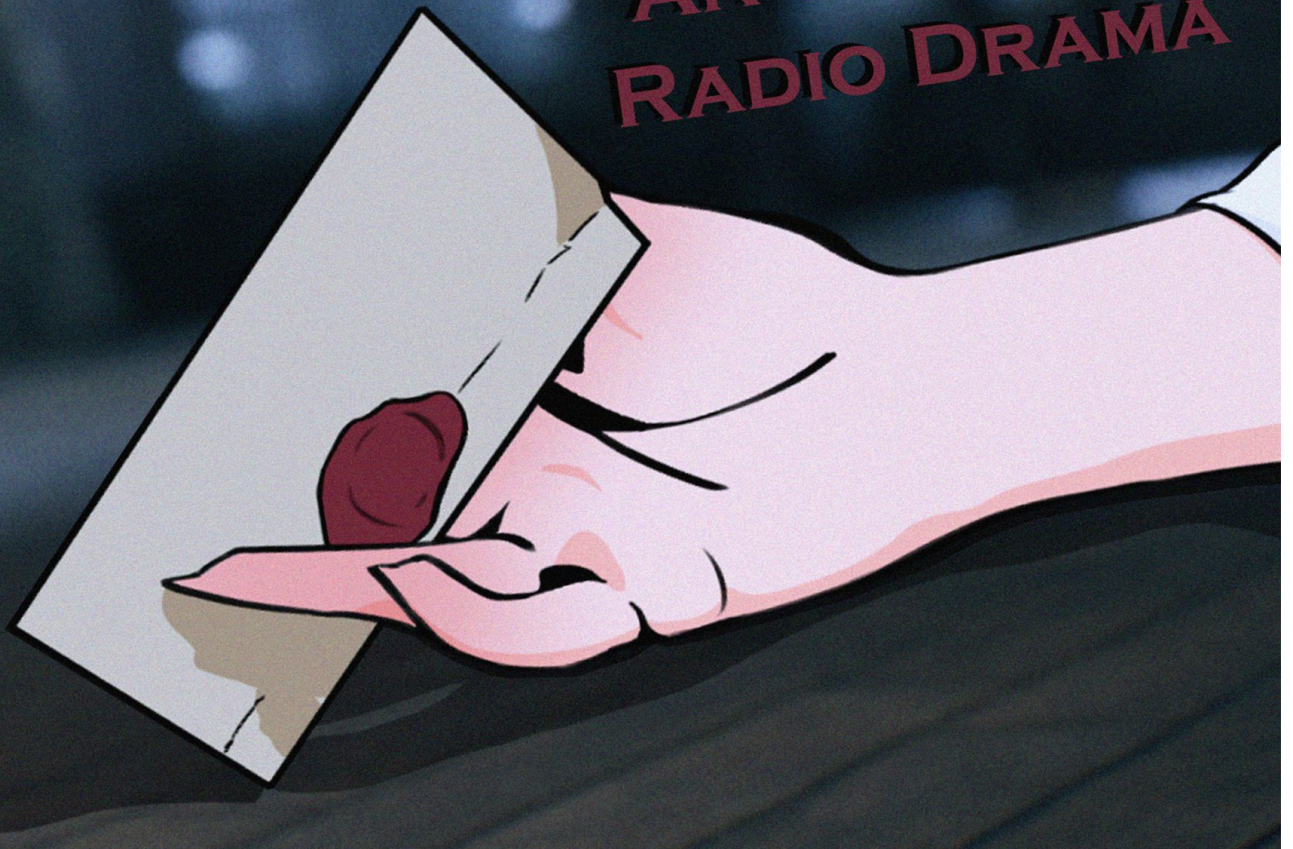


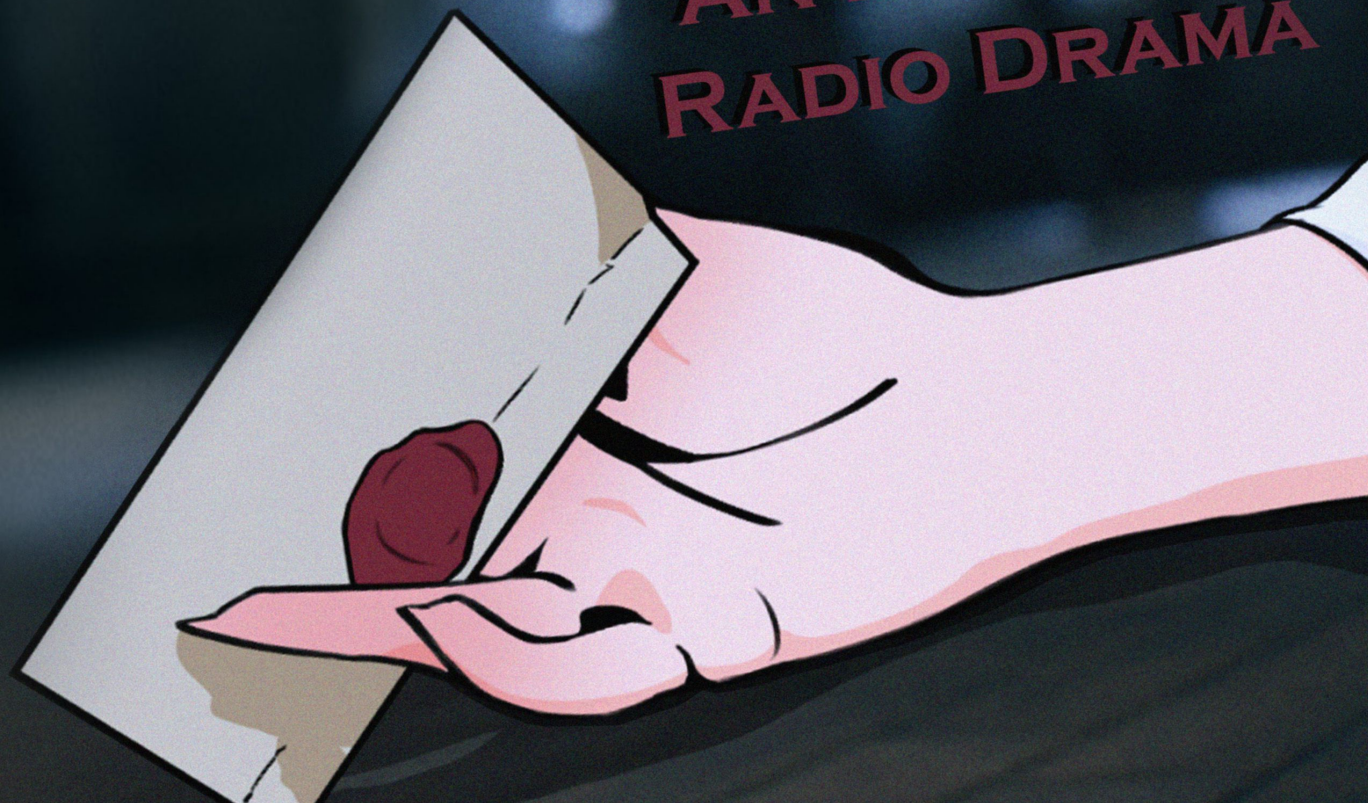
# MURDER MANOR

AN EPISODIC  
RADIO DRAMA



# MURDER MANOR

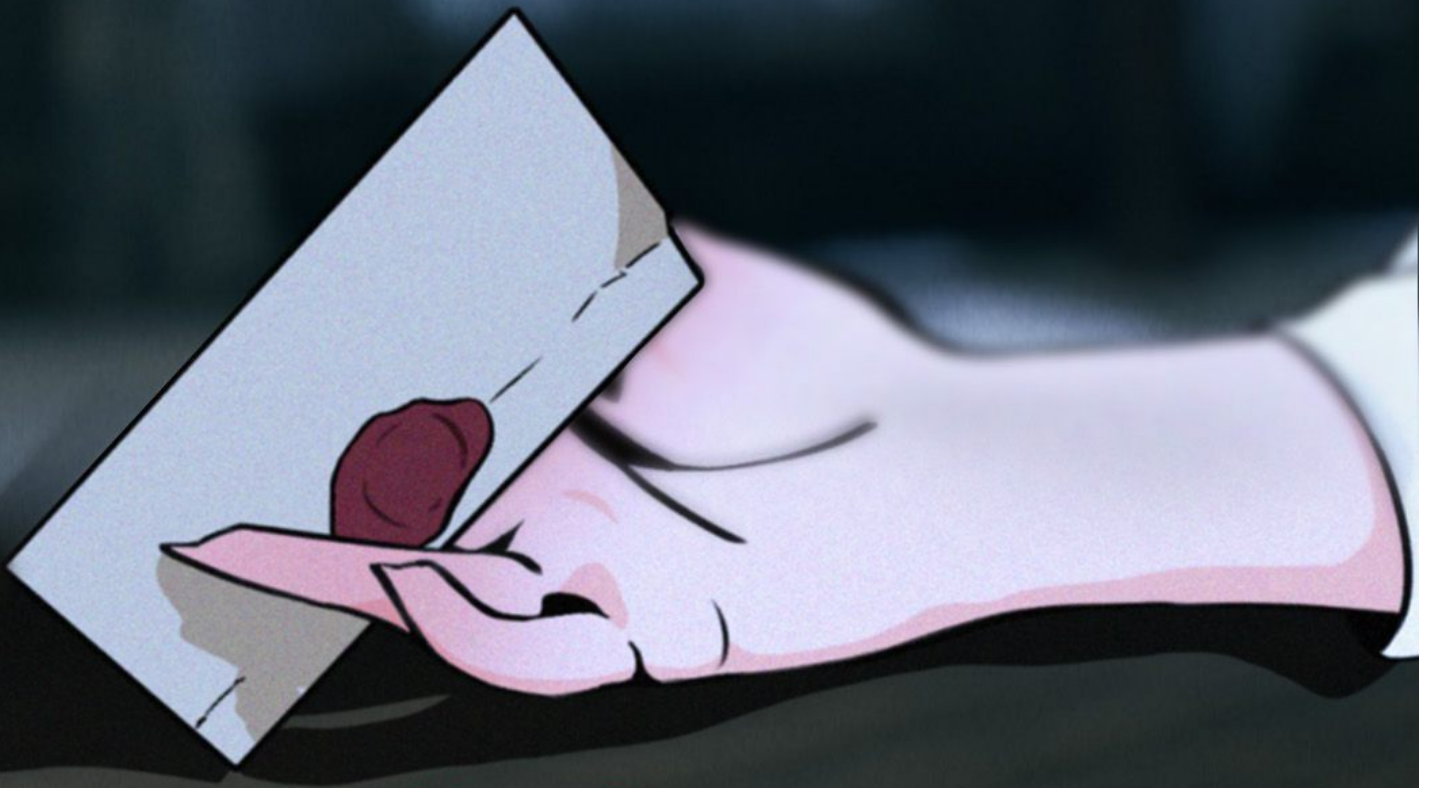
AN EPISODIC  
RADIO DRAMA



# MURDER MANOR

YOU'RE INVITED TO

# MURDER MANOR

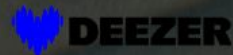


NOW STREAMING

---



SAMSUNG



# MURDER MANOR

EPISODE 1  
"THE PIANIST"



# MURDER MANOR

EPISODE 2

“MYSTERIOUS CRYISIS”



# MURDER MANOR

EPISODE 3

“DARK AT THE  
END OF THE TUNNEL”



# MURDER MANOR

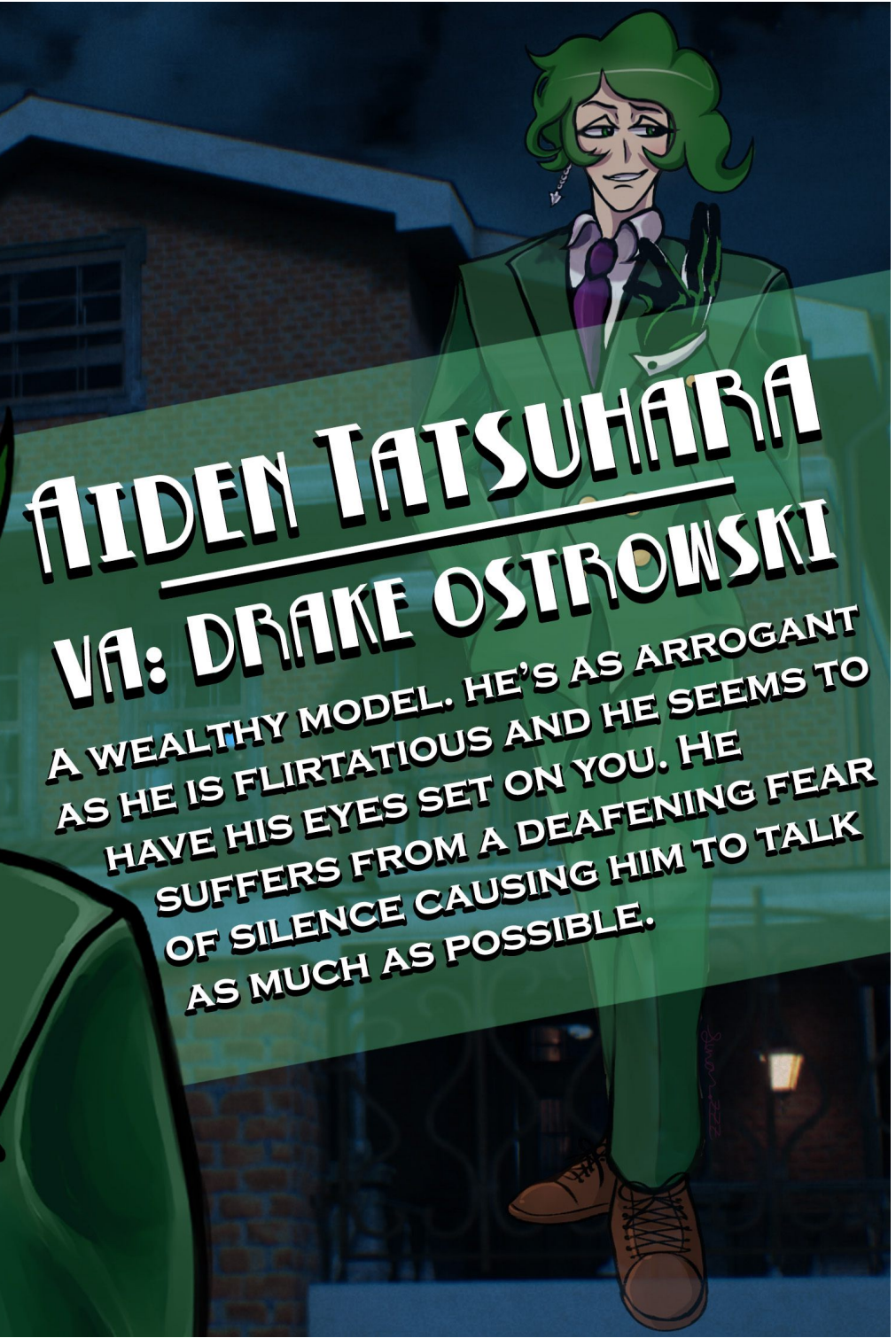




**AIDEN TATSUHARA**  
**VA: DRAKE OSTROWSKI**

A WEALTHY MODEL. HE'S AS ARROGANT AS HE IS FLIRTATIOUS AND HE SEEMS TO HAVE HIS EYES SET ON YOU. HE SUFFERS FROM A DEAFENING FEAR OF SILENCE CAUSING HIM TO TALK AS MUCH AS POSSIBLE.

SYNDROMEDIA  
**MURDER  
MANOR**





# **CANDY LOCKHART**

**VA: ENVEE LIN ALICE**

AN ENERGETIC MAID WHO SEEMS TO LOVE EVERYONE AND EVERYTHING. WHEN TWO PEOPLE ARE SEEN TOGETHER, SHE JUMPS ON THE CHANCE TO BUILD UP THEIR ROMANCE. HOWEVER, ONCE SHE STARTS TO STUMBLE UPON THE BODIES OF THE MANOR'S MANY VICTIMS, HER CHEERY OUTLOOK IS QUICKLY CHALLENGED.

**SYNDROMEDIA'S**  
**MURDER**  
**MANOR**



**ETHAN ZEHR**

**STARRING JAMES DARREL**

**DIRECTOR**

**WRITER**

**EDITOR**

**SOUND DESIGNER**

**PRODUCER**



# ALICE LUCIA COATES

STARRING SHIROSAKI HANIMIO



**ENVEE LIN ALICE**  
STARRING CANDY LOCKHART



**LEAH RYAN**  
STARRING TSUKI KOTONE

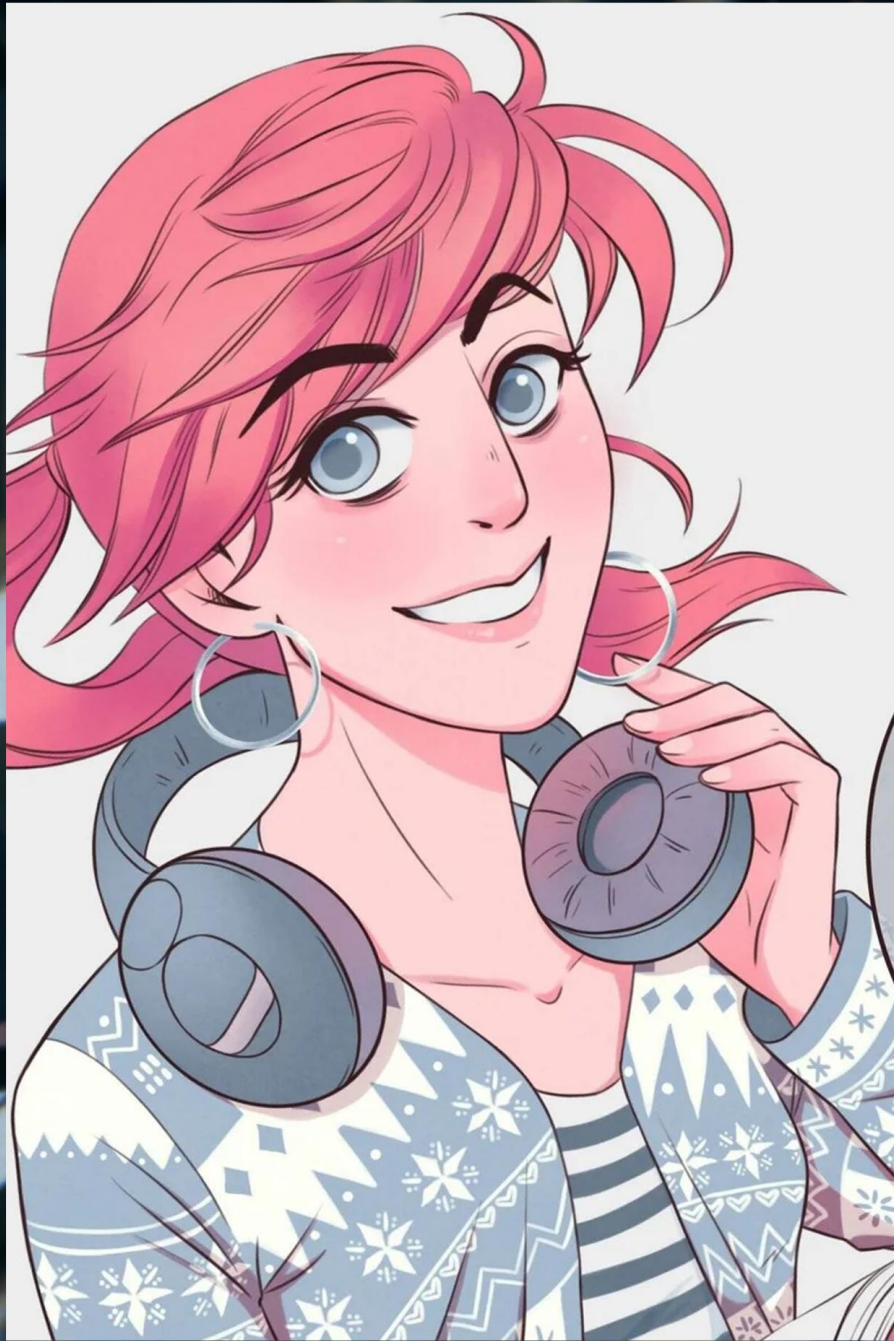


# DRAKE OSTROWSKI

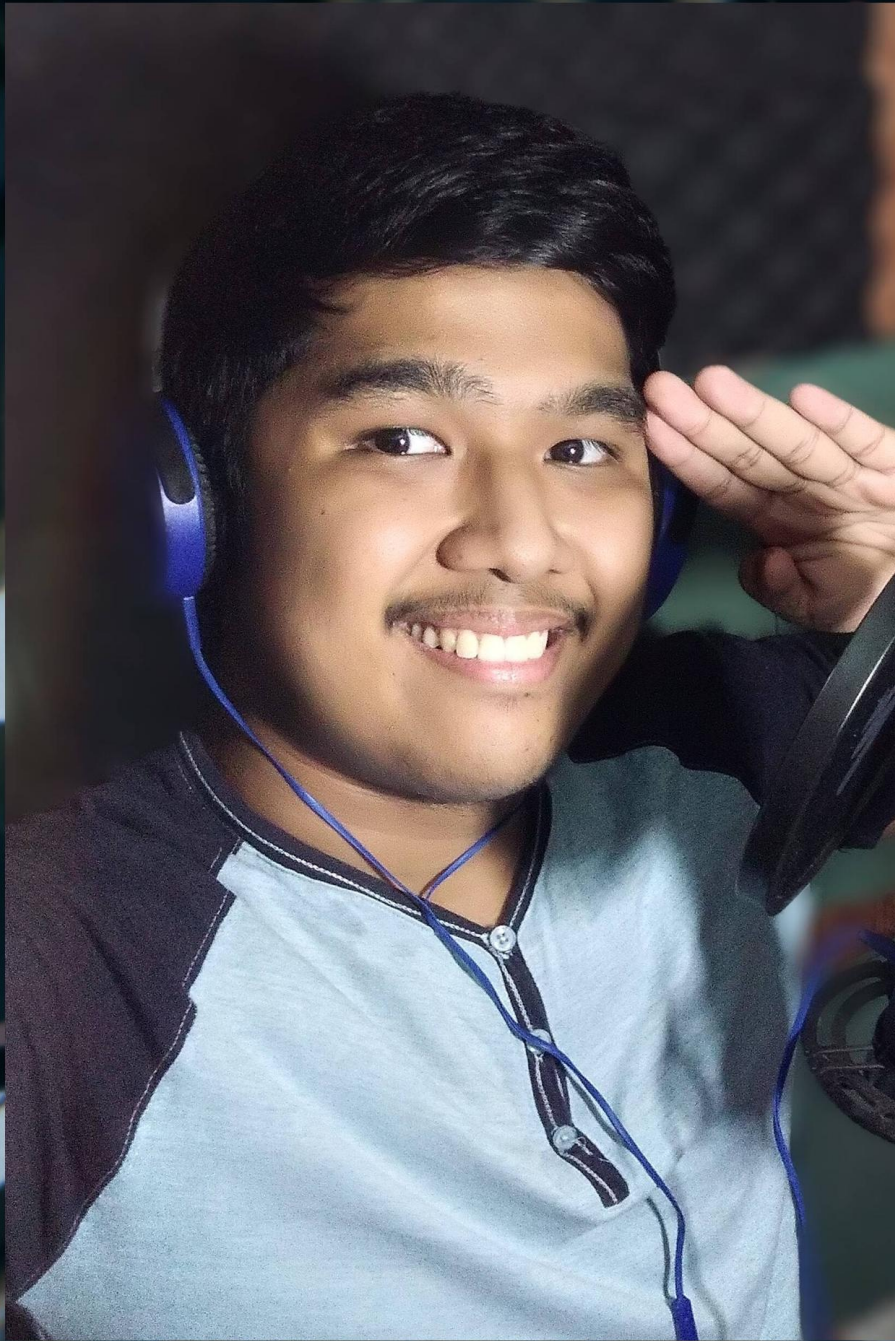
STARRING AIDEN TATSUHARA



**SEAN MADSON**  
STARRING LUKE ROGERS



**MEGAN KELLEY**  
CO-STARRING YAROU CAIRA



**SIRACH DEEN**  
CO-STARRING DAKOTA WINFREY



**SLAVISA NEDJAC**  
GUEST STAR CAPTAIN CORAL



**BRENDAN MCLATCHIE**  
GUEST STAR MASTER CARPENTER