

AN
ADVENTURE

SEARCHING
A MEANING

TOUCHING
THE HISTORY

UNIQUE
CHARACTERS

EXPLORING
THE LAND

AND STRANGE
LIFE MATTERS



THE
**DESERT
MAN**

DOCUMENTARY SERIES
MOODBOARD



SUMMARY OF THE PRODUCTION

PASSING THE ARABIAN DESERT

A man from a distant modern world returns to the land of his ancestors — the vast and unforgiving Arabian Desert. As he journeys deeper into the silence of the sands, what begins as a search for lost stories transforms into something more elemental: a confrontation with time, identity, and the essence of human resilience. Through encounters with desert dwellers who have chosen to live beyond the reach of modernity, he begins to unravel a way of life rooted in endurance, patience, and dignity.

“Desert Man” is not a typical travel show — it is a visually poetic and contemplative exploration of cultural memory, tradition, and the power of place. Filmed in remote locations never before captured by a film crew, the series offers an immersive experience into the spiritual landscape of the Arab desert — a place where the past is not forgotten, but lived.



SUMMARY OF THE PRODUCTION

FROM MINUS 4 TO 45 DEGREES IN PRODUCTION

After the design phase of our project, AJ360 and our company's producers immediately got to work and the first location was chosen as Al Jouf region, which is one of the important starting points of ancient travelers' routes and is located within the borders of Saudi Arabia today. The recce process, which started in November, lasted about 15 days. Led by our director Eray Demir, our Location Scout and Production Designers toured the region and met with suitable locations and people for the film. When they returned to Istanbul, the scripts were finalized and the shooting started for 15 days. Setting out with a compact crew, the director shot the stories that touch the spirit of the desert and have a dramatic flow that is connected to each other like a chain in the most cinematic way possible.

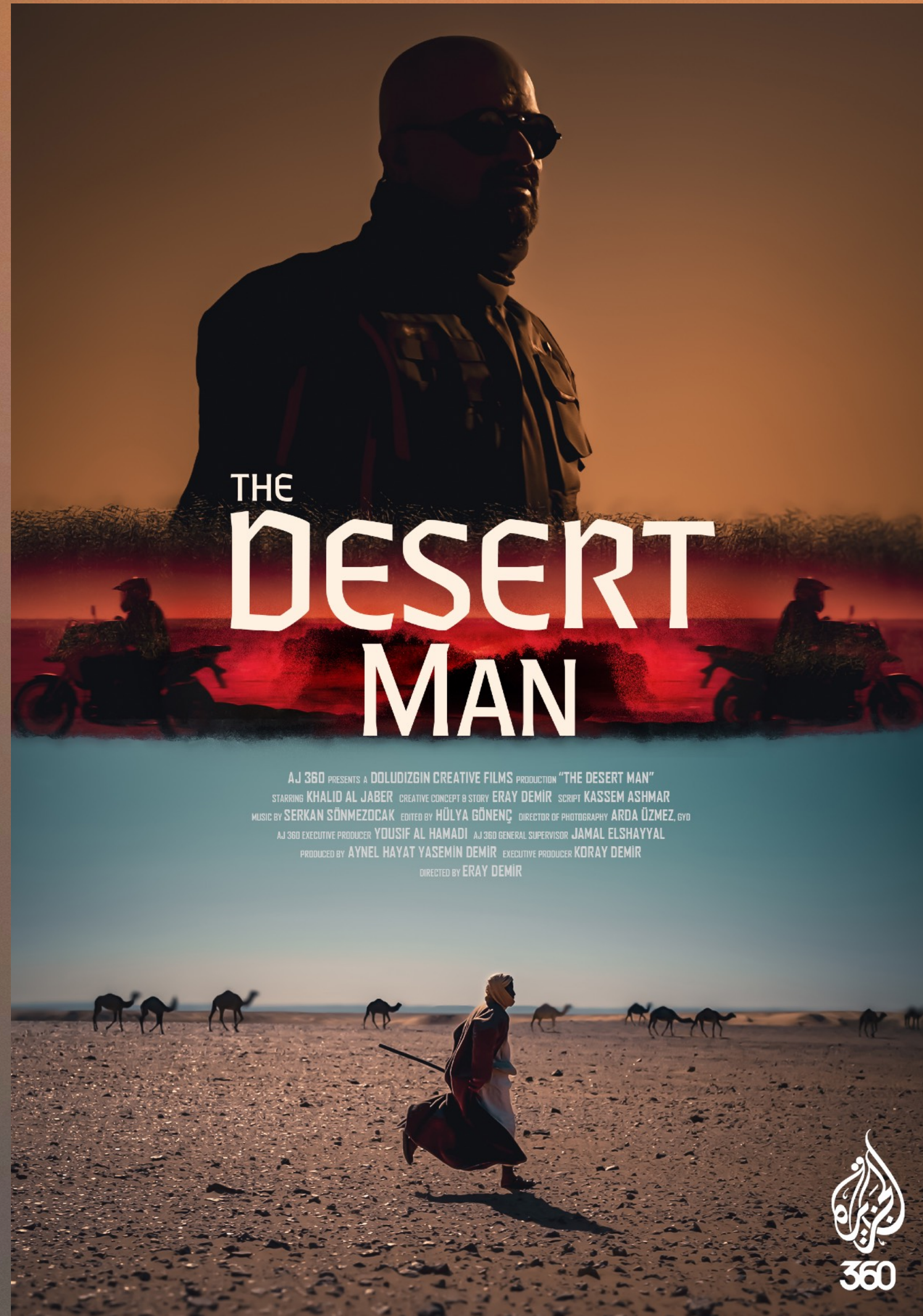


THE
JOURNEY
BEGINS



THE
**DESERT
MAN**

DIRECTOR'S STATEMENT



When I first entered the deep deserts of northern Arabia, I was not looking for answers — I was searching for silence. What I found was something far greater: a way of life that resists erasure, a wisdom carried in dust, and an identity that is both fragile and enduring.

As the modern world accelerates, we often forget the people who chose not to follow — those who turned away from comfort not out of nostalgia, but out of conviction. Desert Man is my attempt to understand them, and in doing so, understand something within myself.

This series is not about survival techniques or exotic visuals. It is about the internal landscapes that shape us, about traditions lived rather than displayed, about listening rather than explaining. I did not approach the desert with a camera. I approached it with humility.

By following the daily lives of those who continue to live where time moves differently, I tried to construct a cinematic experience that feels less like a documentary and more like a shared memory. A quiet invitation to witness — and to remember.

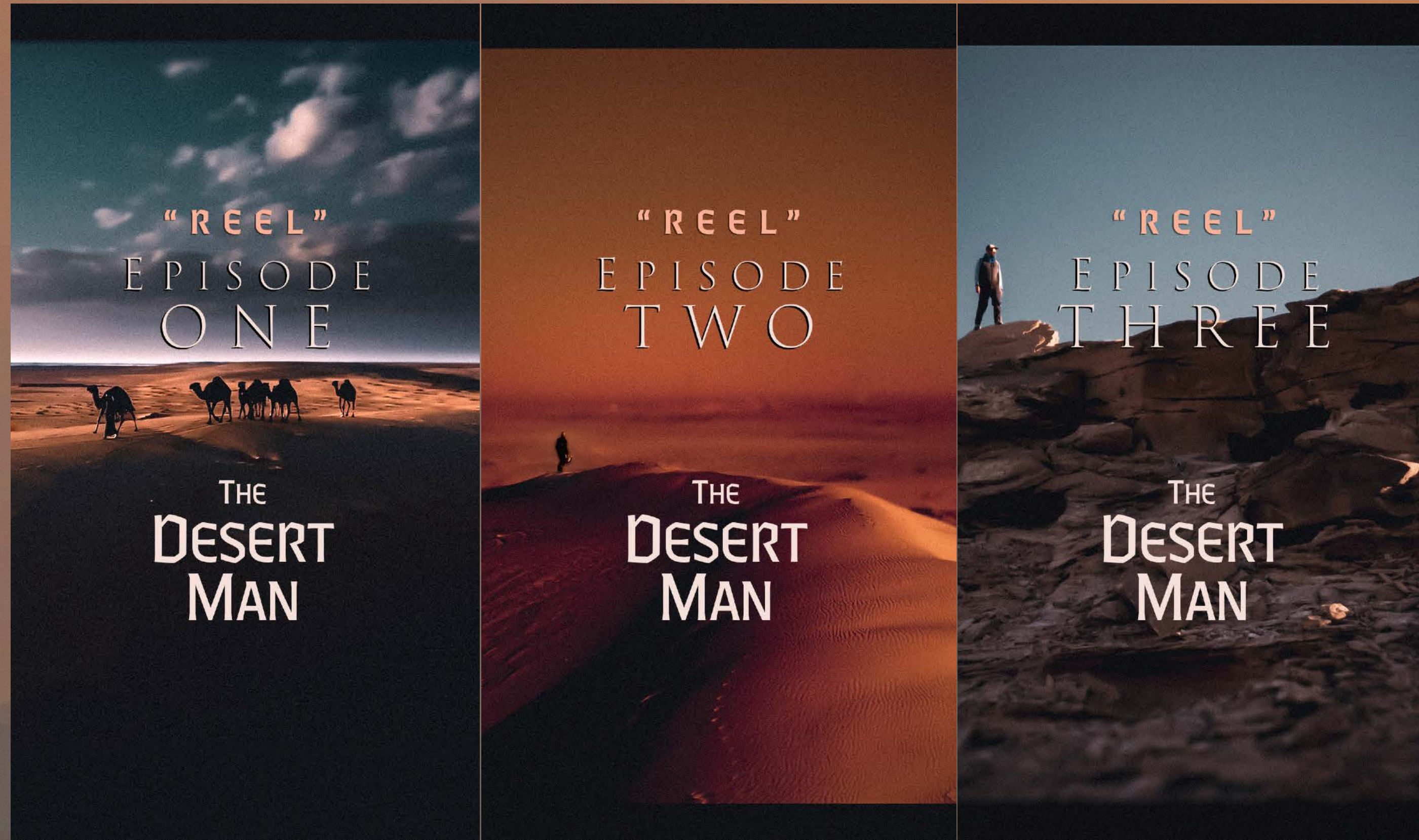
I hope Desert Man offers a moment of stillness for the viewer, just as it did for me. In a world full of noise, perhaps what we need most is to hear what the silence has to say.

“THE DESERT
SHOWS THE WAY”



ERAY DEMİR

BROADCASTING OF THE SERIES



THE DESERT MAN

The series was released on the Al Jazeera 360 Digital Platform with its first 3 episodes last January and met expectations, becoming one of the top 10 most-watched content on the platform with only 3 episodes. The series, which has caught its own audience and frequency, will continue to be released on the platform with its future episodes and we will follow a journey that will last 3 seasons up to Western Sahara.

