

# ROLL MODELS

Created by  
Patrick Hale

# CHARACTERS



Maria



Panga



Luca



Hollis



Captain Scuttle



Laundry Wren



Janice Peacock

01

# MARIA

With her warm smile, short blonde hair, and vibrant orange top, Maria is a quirky, adventurous singer. Her love for music and nature intertwines with her playful personality, making her a captivating character.

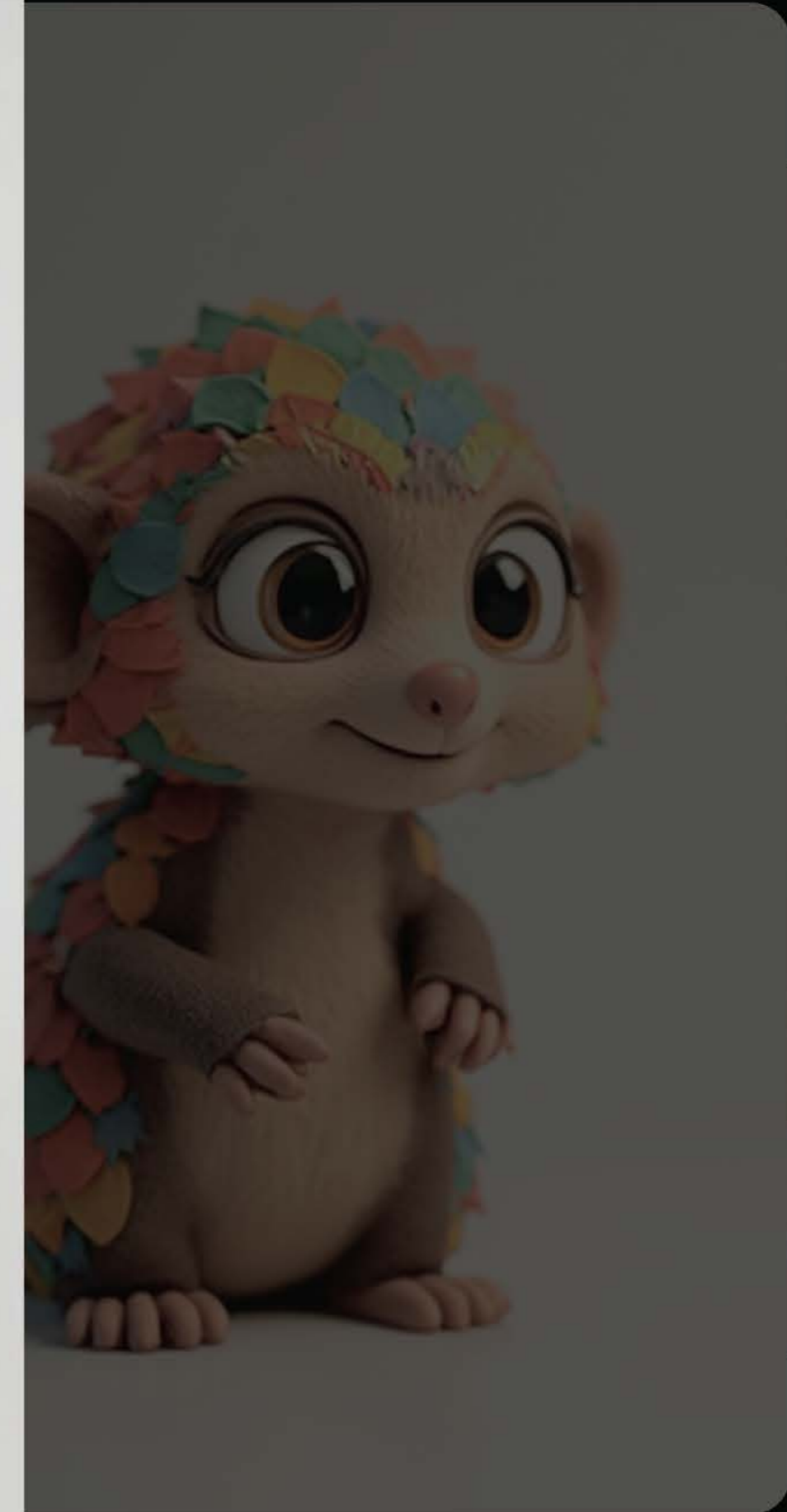
45 years old

## — BACK STORY

Maria, a 45-year-old Caucasian woman, lives in a jungle near a mystical olive tree. She's unmarried, with close relationships to Panga and Luca. Motivated by a love for music and adventure, she embraces life's quirks.

## — INTERESTS

Maria enjoys singing, interacting with nature, and puppetry. She finds joy in simple pleasures and has a playful, curious spirit. Her free time is spent exploring the jungle and creating music.



02

# PANGA

Panga is a cute, colorful pangolin puppet with expressive eyes and a playful nature. Shy yet adventurous, Panga's kindness shines through in their interactions with friends, always ready to assist and explore the unknown.

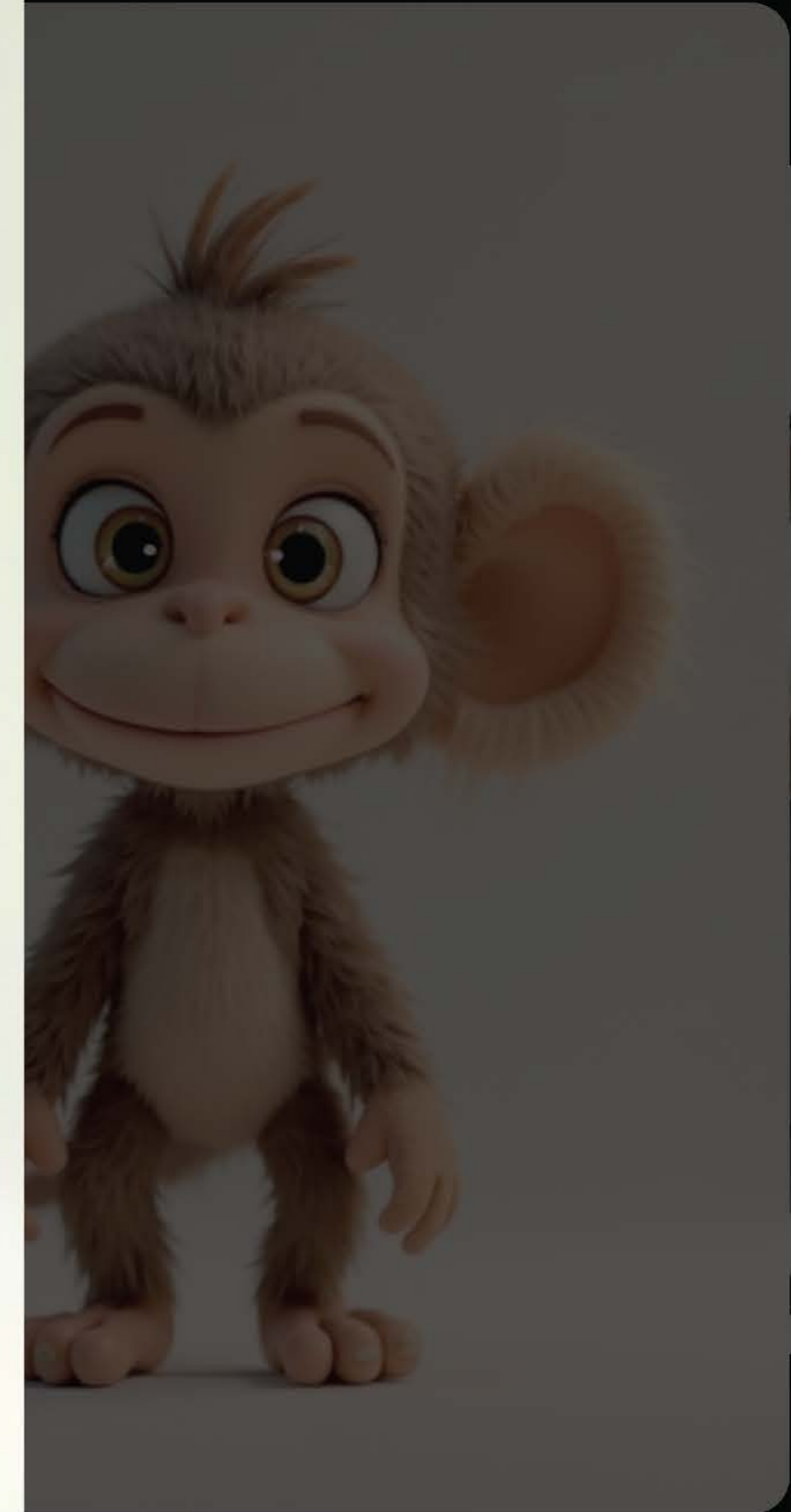
10 years old

## — BACK STORY

Panga Green, a 10-year-old pangolin puppet, lives in a lush jungle. Shy but kind, Panga is motivated by curiosity and a desire to help friends. Panga has a close bond with Maria and Luca, sharing adventures and playful moments.

## — INTERESTS

Panga enjoys exploring the jungle, singing with Maria, and playing with Luca. Free time is spent on creative pursuits, discovering new things, and helping others in need. Panga is always ready for a new adventure.



03

# LUCA

Luca is a cute, brown-furred monkey puppet with large expressive eyes and huge ears. Playful and energetic, he inhabits a vibrant jungle with friends, embracing adventure and comedic situations.

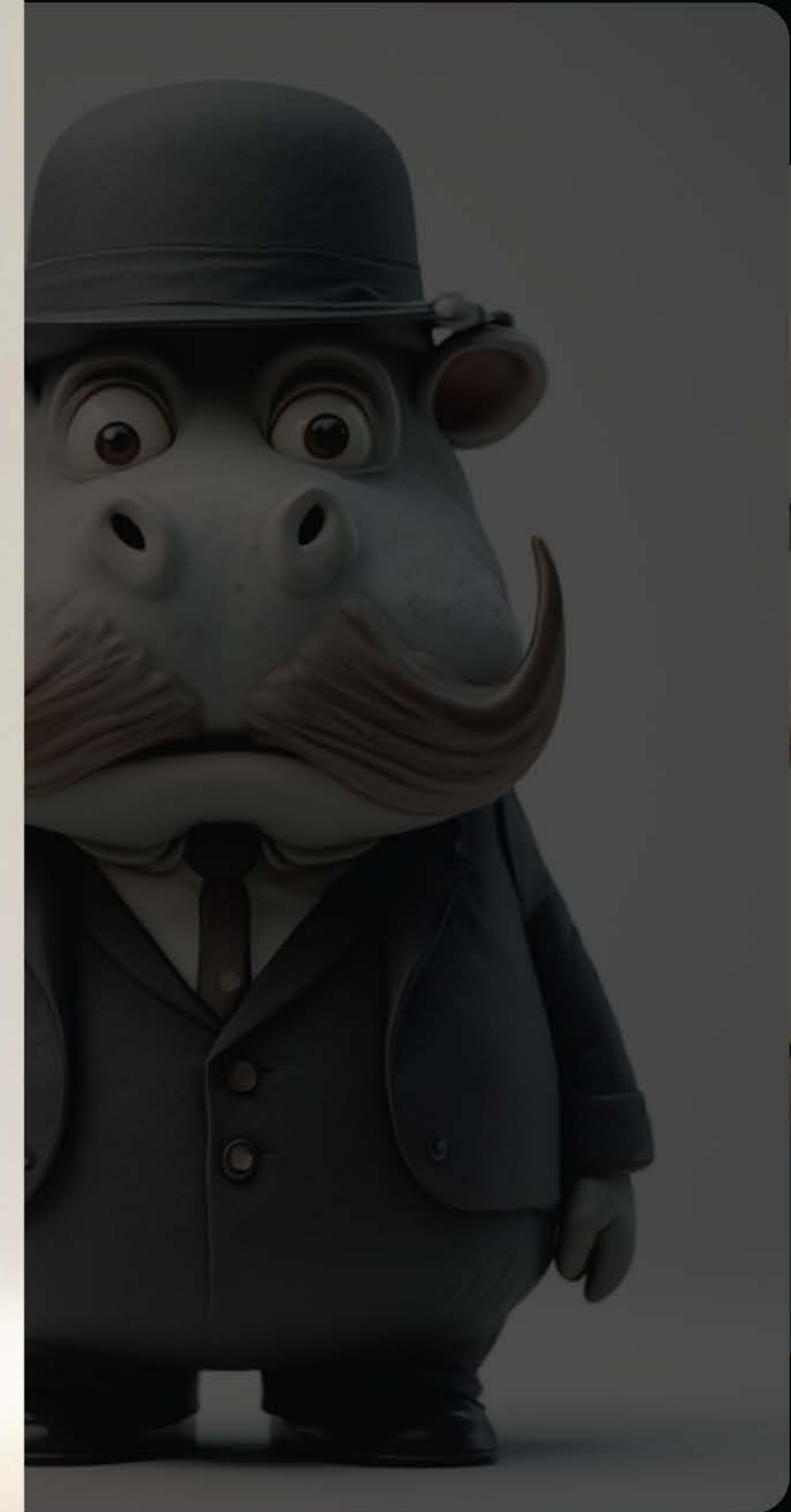
10 years old

## — BACK STORY

Luca Swing, a 10-year-old puppet monkey, lives in a lush jungle. He is unmarried and has a playful, energetic personality. His closest companions are Maria and Panga Green. His main motivation is fun and adventure, often leading to humorous mishaps.

## — INTERESTS

Luca enjoys playful interactions with friends, especially Maria and Panga. He loves exploring the jungle, causing lighthearted mischief, and performing comedic acts. He is agile and enjoys swinging through trees.



04

# HOLLIS

Hollis is a serious, 80-year-old hippopotamus puppet in a Royal Navy hat. His dedication to duty and mission accomplishment defines him. He represents authority and seriousness, yet his puppet form hints at unexpected humor.

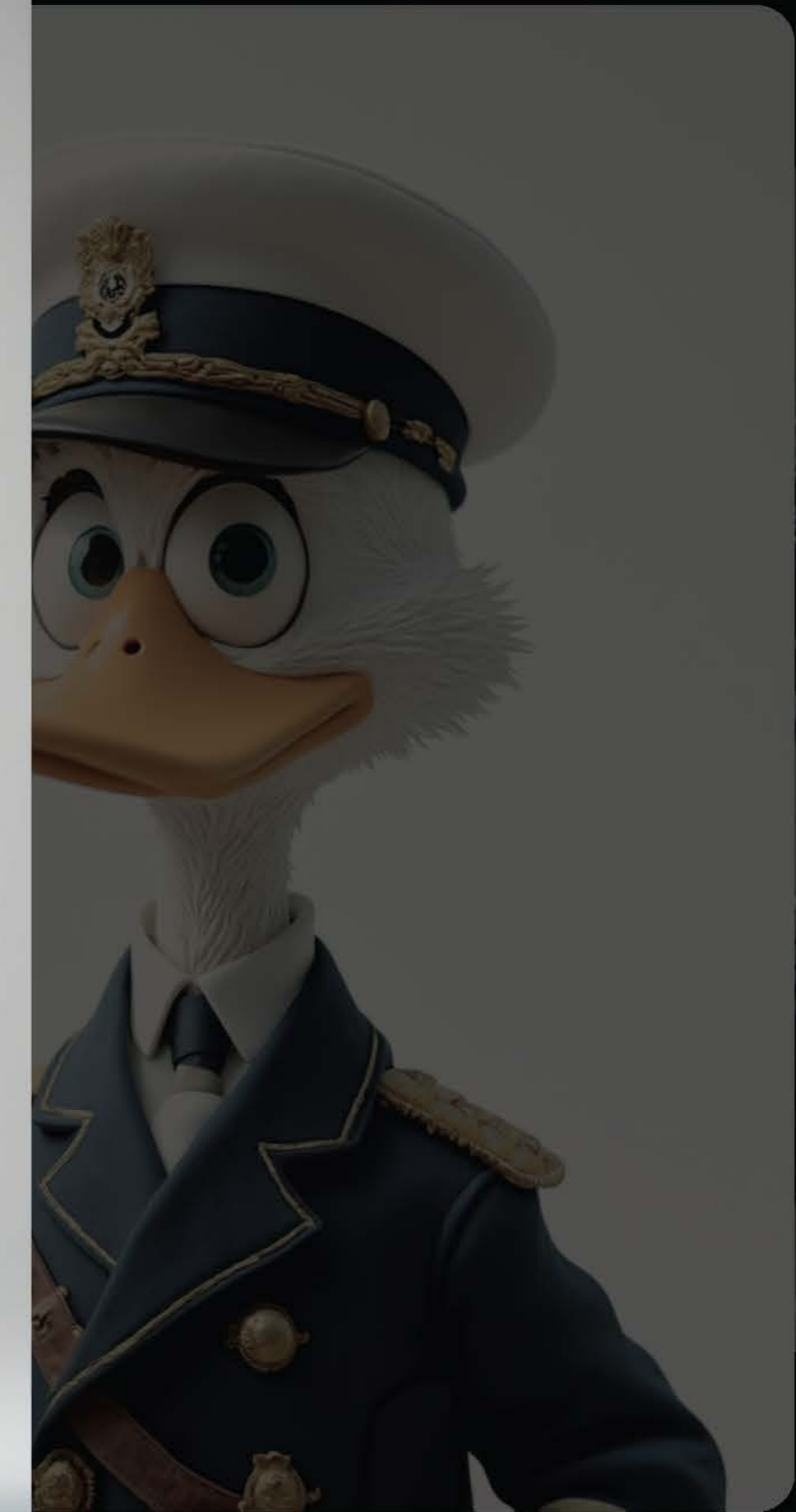
80 years old

## — BACK STORY

Hollis, an 80-year-old hippopotamus puppet, is a serious Royal Navy officer. He values duty above all else and is driven by his commitment to completing his mission. He currently resides at sea, and his significant relationships are primarily professional.

## — INTERESTS

Hollis's dedication to his naval duties leaves little time for hobbies. His focus is on completing his mission efficiently. However, he might appreciate strategic naval history in his spare time.



05

# CAPTAIN SCUTTLE

Captain Scuttle is a 50-year-old regal duck puppet in a naval captain's uniform. Authoritative yet humorous, he commands his ship with old-fashioned views, while secretly enjoying a good laugh and the order of naval life.

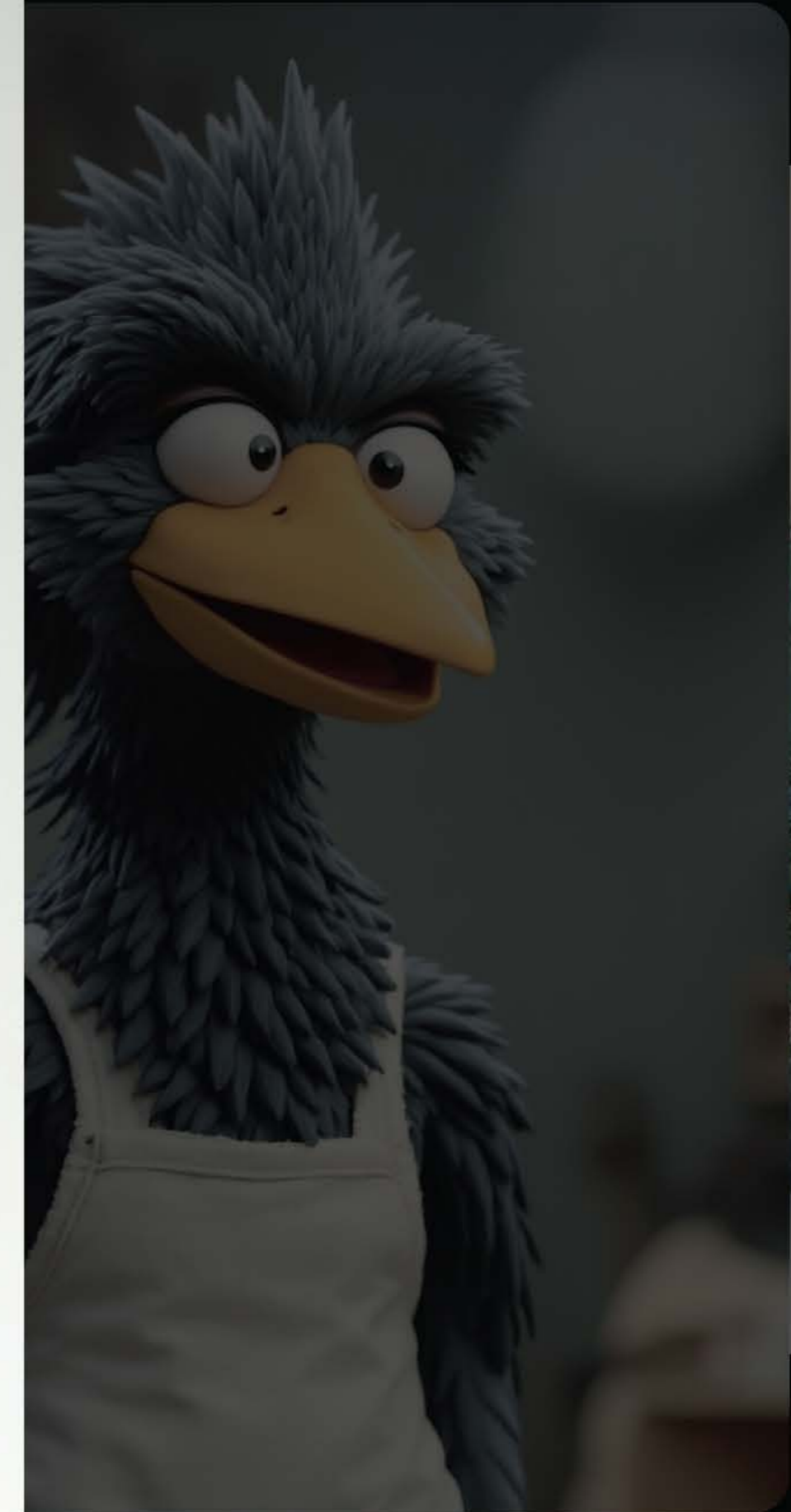
50 years old

## BACK STORY

Captain Scuttle, a 50-year-old regal duck, commands a naval vessel. He resides on his ship, maintaining a strict, humorous demeanor. His motivations stem from upholding naval tradition, though his views on women are surprisingly old-fashioned. He values order and discipline above all.

## INTERESTS

While his duties are demanding, Captain Scuttle enjoys the pomp and circumstance of his position. He appreciates a well-maintained ship, and his downtime involves reviewing naval strategies, though he secretly enjoys a good laugh.



06

# LAUNDRY WREN

A serious, heavy-set bird puppet, the Laundry Wren is the disciplined and efficient manager of a naval laundry. Her reserved demeanor hides a dedication to order and her work, making her a crucial, if somewhat unassuming, character.

40 years old

## — BACK STORY

The Laundry Wren, a 40-year-old, heavy-set female bird puppet, oversees laundry operations in a bustling naval dockside warehouse. Reserved and serious, she's deeply committed to her duties, ensuring order amidst the chaos. Her motivations stem from a dedication to efficiency and maintaining order.

## — INTERESTS

Outside of her work, the Laundry Wren's hobbies are unknown, her focus primarily on her duties. Her spare time is likely dedicated to maintaining the laundry's organization and ensuring smooth operations, reflecting her disciplined nature.



07

# JANICE PEACOCK

A stunning peacock puppet secret agent, Janice is elegant and graceful, balancing a playful nature with unwavering dedication to her duty. Her jungle upbringing contrasts sharply with her current high-stakes missions.

## — BACK STORY

Janice Peacock, a secret agent, grew up in a secluded jungle village. Currently residing in a bustling port city, she's unmarried and driven by a strong sense of duty and justice, motivated by a desire to protect the innocent.

## — INTERESTS

Janice enjoys singing, especially in natural settings. She also appreciates playful interactions and finds solace in the beauty of nature, often seeking quiet moments amidst the chaos of her missions.



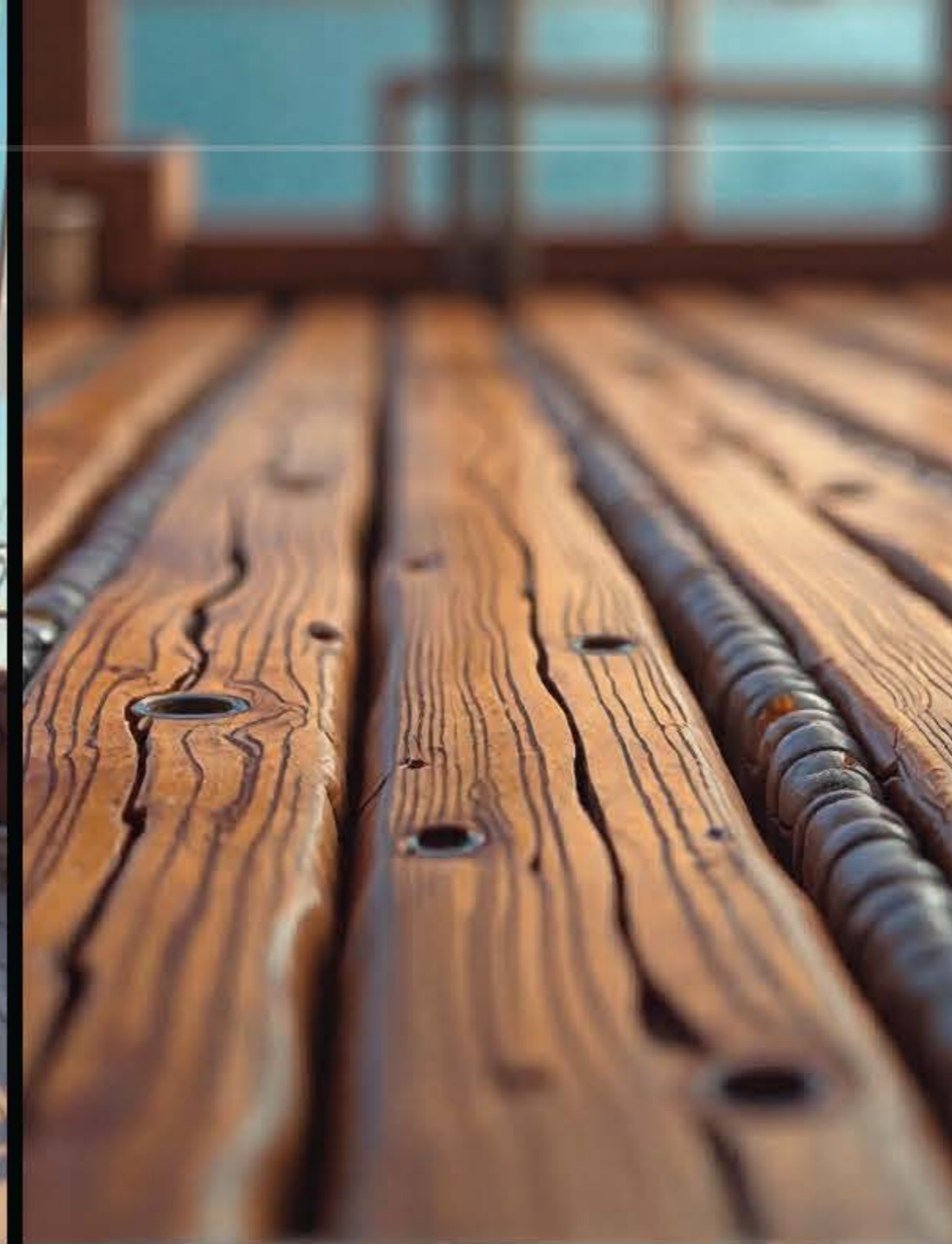
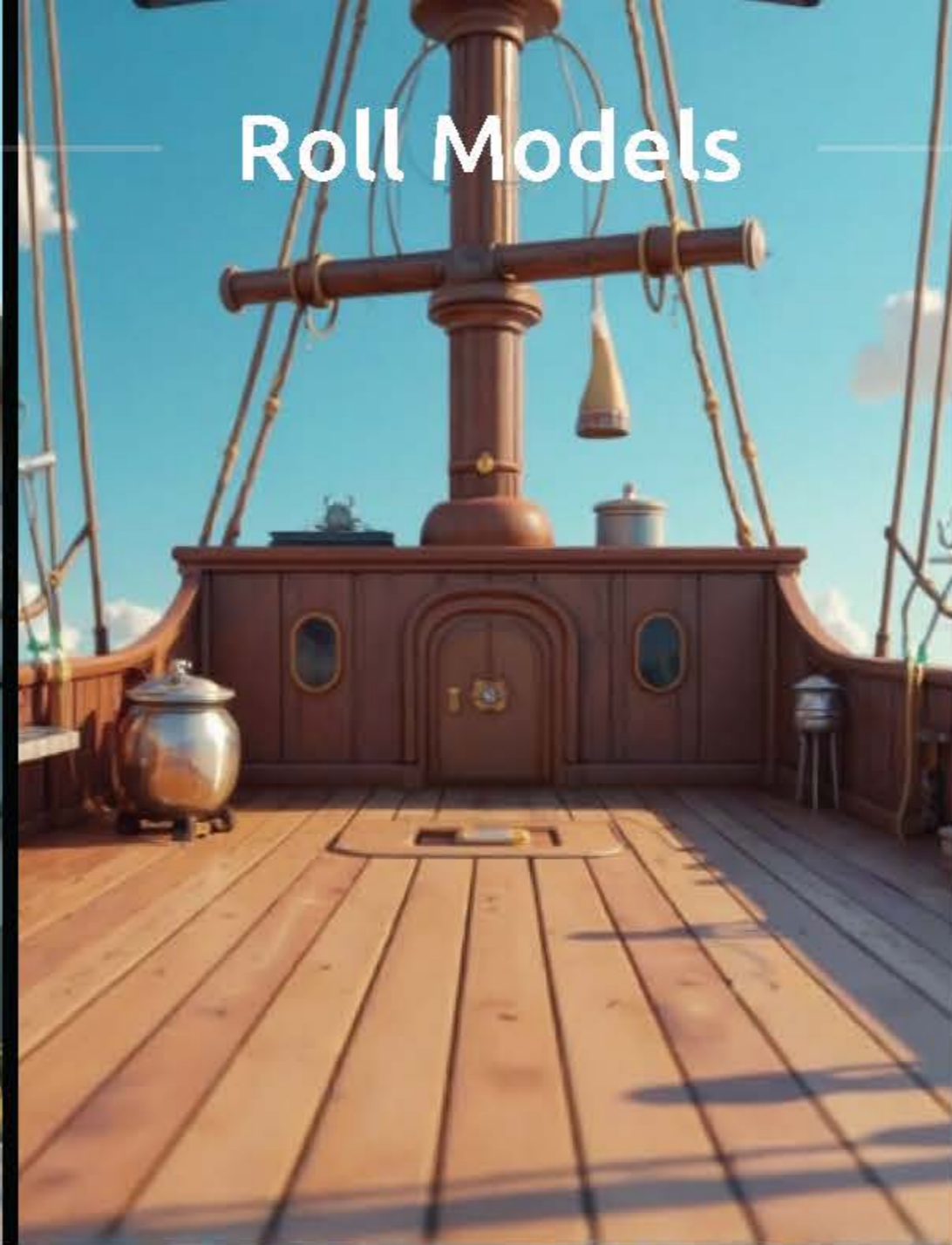
Fun • Kids • Live-action host • puppets

props and costumes

# MOOD BOARD

Visual Aesthetic

LIVE-ACTION / PRACTICAL EFFECTS / CG ANIMATION



# COLOR PALETTE

A film's color palette sets the mood, guides emotions, and highlights themes. It ensures visual continuity, directs audience focus, and emphasizes key elements. Essentially, it's a vital tool that enhances a film's emotional and visual impact.



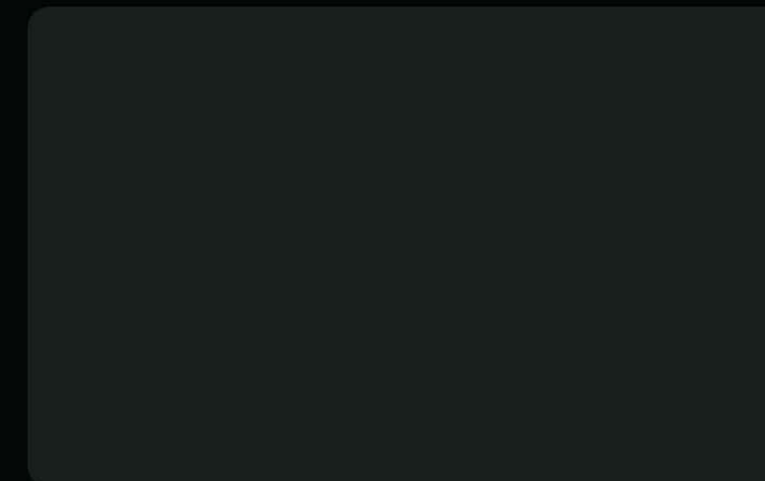
CMYK 4 - 0 - 19 - 71      RGB 72, 75, 61



CMYK 0 - 8 - 73 - 75      RGB 63, 58, 17



CMYK 18 - 2 - 0 - 53      RGB 99, 118, 120



CMYK 19 - 0 - 3 - 88      RGB 25, 31, 30



CMYK 0 - 33 - 38 - 85      RGB 39, 26, 24



CMYK 21 - 0 - 16 - 45      RGB 112, 141, 118



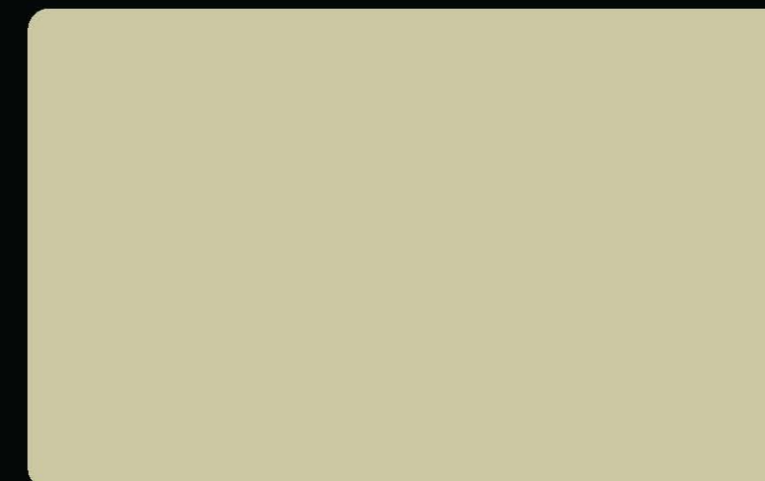
CMYK 0 - 5 - 31 - 42      RGB 147, 140, 102



CMYK 24 - 1 - 0 - 34      RGB 129, 167, 169



CMYK 19 - 0 - 11 - 25      RGB 154, 190, 169



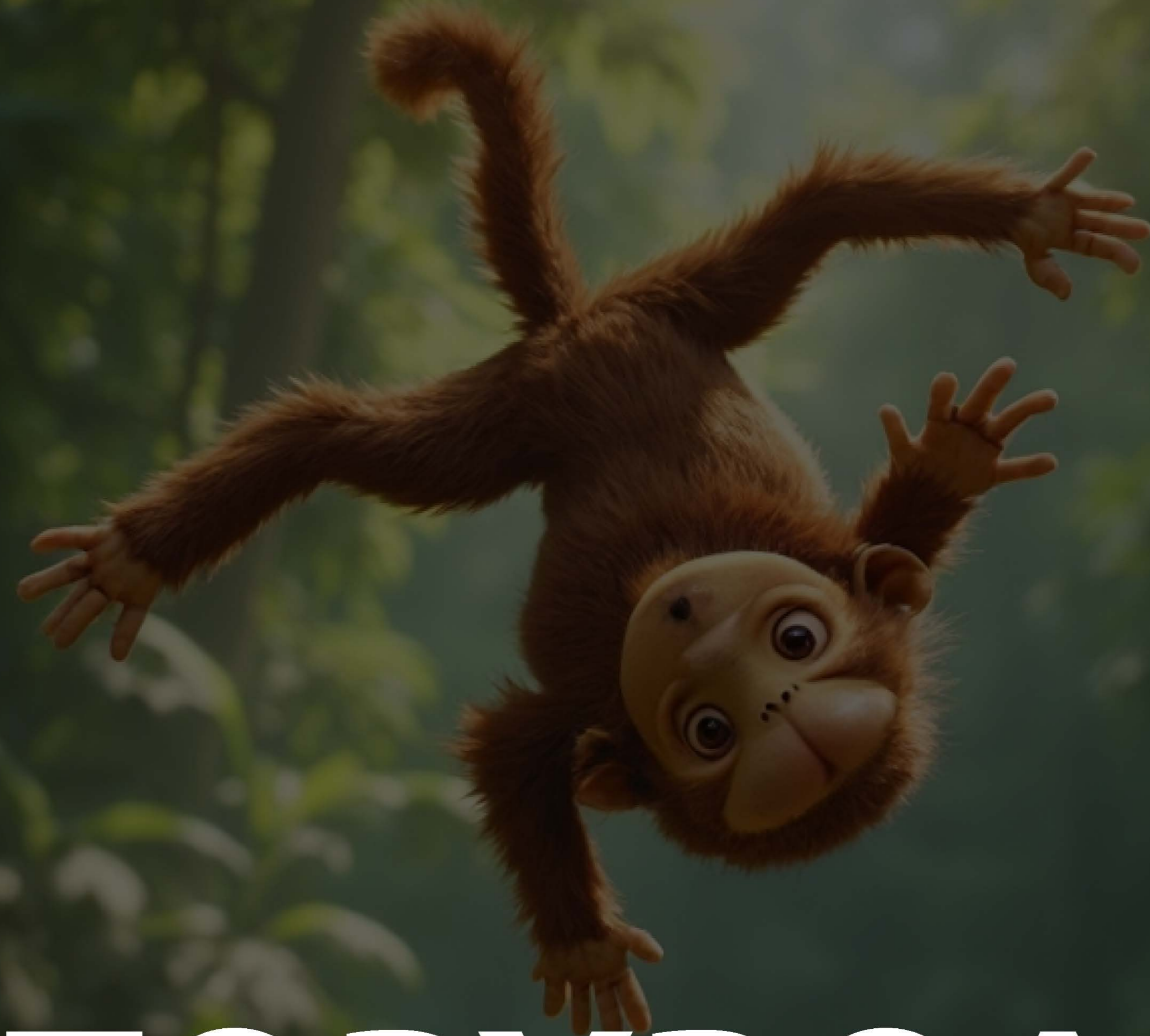
CMYK 0 - 2 - 20 - 20      RGB 205, 201, 163



CMYK 0 - 58 - 81 - 25      RGB 190, 79, 37

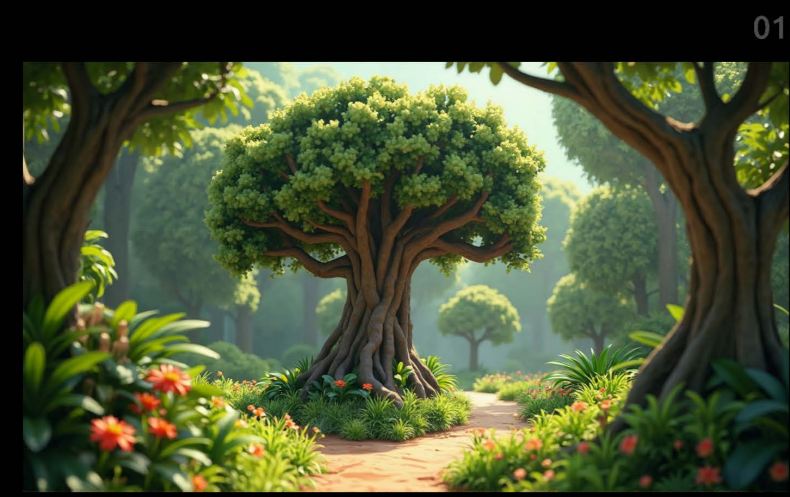


CMYK 0 - 10 - 68 - 24      RGB 194, 174, 62

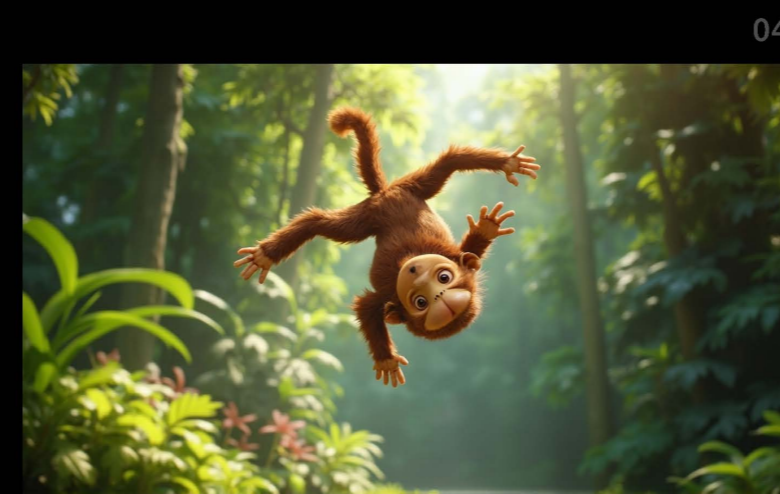
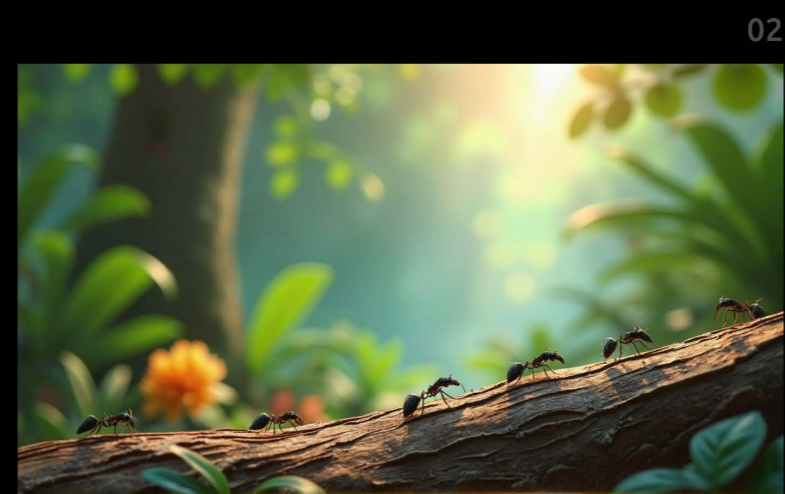


# STORYBOARD

01 EXT. TOOBANA-BOCA - DAY



02 EXT. JUNGLE CANOPY - DAY



03 EXT. TOOBANA-BOCA - DAY

01



02



04 EXT. NAVAL DOCK, DAY

01



02



03



05 EXT. DECK OF SHIP, DAY

01



02



03



06 EXT. LAUNDRY WAREHOUSE - DAY



07 INT. LAUNDRY ROOM - DAY



08 EXT./INT. BARRACKS ROW - DAY



09 INT. WAR ROOM - DAY



SCENE 1

# EXT. TOOBANA-B OCA - DAY

## DESCRIPTION

Maria sings to a mystical olive tree, amongst a dense jungle while she is joined by its voice and two playful puppets in a lively outdoor setting.

**LOCATION** A vibrant outdoor setting featuring a large, spiral Olive tree with a gnarled trunk and lush green leaves. The tree's hollow trunk creates a natural shelter, and the ground is covered with soft grass and scattered wildflowers in shades of yellow and purple. Sunlight filters through the leaves, casting playful patterns on the ground, while the air is filled with a warm, inviting atmosphere.

**LIGHTING** bright natural sunlight



01



## SCENE 2

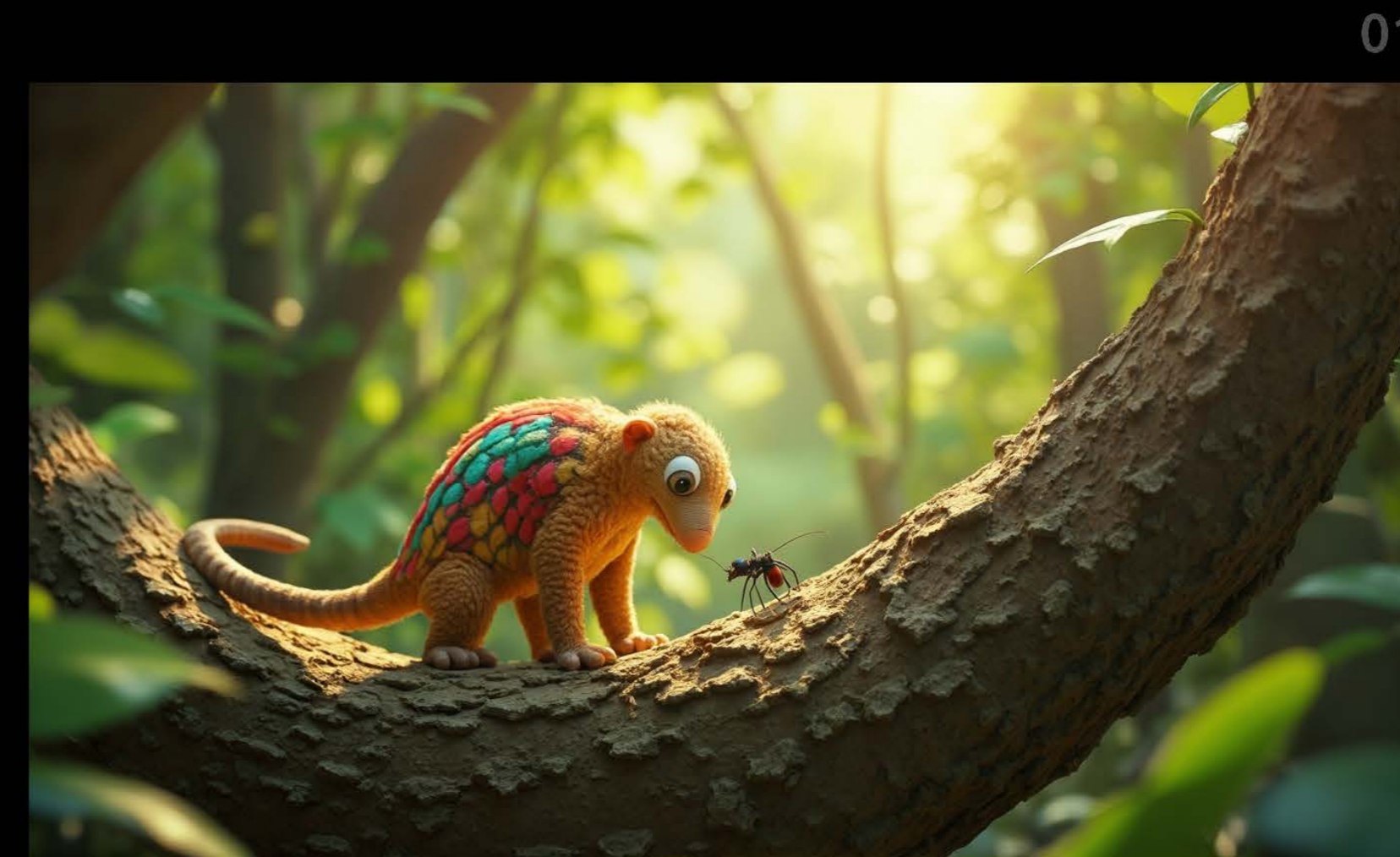
# EXT. JUNGLE CANOPY - DAY

## DESCRIPTION

Panga Green and Luca Swing have a playful interaction in a lush jungle setting, leading to a humorous mishap.

**LOCATION** A lush jungle canopy filled with vibrant green foliage and towering trees. The sunlight filters through the dense leaves, creating dappled light patterns on the forest floor. Various tropical plants and flowers add splashes of color, while the sounds of chirping birds and rustling leaves create a lively atmosphere.

**LIGHTING** bright natural sunlight



SCENE 3

# EXT. TOOBANA-B OCA - DAY

## DESCRIPTION

Maria, Panga, and Luca harmonize under a vibrant olive tree, interrupted by Hollis emerging from water with urgent naval orders.

**LOCATION** A vibrant outdoor setting featuring a large, spiral Olive tree with a gnarled trunk and lush green leaves. The tree's hollow trunk creates a natural shelter, and the ground is covered with soft grass and scattered wildflowers in shades of yellow and purple. Sunlight filters through the leaves, casting playful patterns on the ground, while the air is filled with a warm, inviting atmosphere.

**LIGHTING** bright natural sunlight



SCENE 4

# EXT. NAVAL DOCK, DAY

## DESCRIPTION

Characters arrive at a naval dock, docking their log flumes amidst a bustling laundry warehouse scene.

**LOCATION** A bustling naval dock with dark blue waters reflecting the sky. A large naval warship looms in the background, its hull painted in navy blue with white accents. The dock is lined with wooden planks and ropes, with various naval equipment scattered around. The brick warehouse labeled 'LAUNDRY' stands prominently, its red bricks contrasting against the blue water and the green of the surrounding area.

**LIGHT** bright natural sunlight



01



SCENE 5

# EXT. DECK OF SHIP, DAY

## — DESCRIPTION

Characters clash with Captain Scuttle on the ship deck over his rule against women, leading to a humorous exchange.

**LOCATION** The deck of a large naval warship, featuring polished wooden planks and a commanding view of the dock. The ship's structure is adorned with naval flags and equipment, while the captain's quarters are visible in the background. The atmosphere is lively with the sounds of sailors and the creaking of the ship.

**LIGHTING** bright natural sunlight



01



SCENE 6

# EXT. LAUNDRY WAREHOUSE...

## DESCRIPTION

Luca Swing is stopped by the Laundry Wren, who warns about the task's seriousness outside a bustling laundry warehouse.

**LOCATION** The exterior of a large brick laundry warehouse, with a sign reading 'LAUNDRY' above the entrance. The building features large windows and a ramp leading down to the dock. The area is bustling with activity as WRENS come and go, carrying laundry and supplies.

**LIGHTING** bright natural sunlight



01



SCENE 7

# INT. LAUNDRY ROOM - DAY

## DESCRIPTION

Luca Swing sorts clothes in a bustling laundry room, guided by the Laundry Wren, providing comic relief and engaging with the audience. The room is full of big industrial washers and white fabric bins labeled A, B and C. The clothes are numbered 1 to 26.

**LOCATION** A bustling laundry room filled with large bins labeled A, B, C, and piles of dirty clothes. The walls are painted a light blue, and the room is filled with the sounds of washing machines and the smell of detergent. A steam whistle blows periodically, adding to the lively atmosphere.

**LIGHTING** bright artificial lighting



01



SCENE 8

# EXT./INT. BARRACKS ROW - DAY

## DESCRIPTION

Maria, Panga, and Janice navigate military barracks, emphasizing security as they enter a guarded building.

**LOCATION** A row of military barracks with heavy metal doors and a serious atmosphere. The buildings are made of concrete with a dull gray color, and the area is surrounded by barbed wire fences. The presence of war hogs adds to the sense of authority and security.

**LIGHTING** June, 2:00 PM, bright natural sunlight



01



SCENE 9

# INT. WAR ROOM - DAY

## DESCRIPTION

Panga Green reveals a crucial code in a tense war room, leading to a moment of realization. The room is filled with old 1940's style equipment and antique projectors.

**LOCATION** A high-tech war room filled with monitors and equipment. The walls are adorned with maps and charts, and a large projection screen displays crucial information. The atmosphere is tense and focused, with Wrens working diligently at their stations.

**LIGHTING** bright artificial lighting



01



A group of Disney duck characters, including Huey, Dewey, Louie, and others, are sitting on a log raft on a river. The scene is set during sunset or sunrise, with a warm, golden glow in the background. The ducks are dressed in various outfits, including sailor uniforms and a hawaiian shirt. The text "THANK YOU" is overlaid in large, white, sans-serif font across the center of the image.

THANK YOU

Patrick Hale | [patrick@rookslc.com](mailto:patrick@rookslc.com)