



*You don't have to be alone.*

A HAND DRAWN SHORT FILM BY AARON BLAISE

Electronic Press Kit




## Awards & Recognition

The journey of Snow Bear has been incredibly meaningful, and we're humbled by the love and recognition it's received across the globe.

I am deeply thankful to the audiences and festivals who have connected with the film and its message of kindness, resilience, and wonder.

- Aaron Blaise





“The wonderful craft of classical hand drawn animation is so clearly on display in *Snow Bear*.

It is a surprisingly emotional story that rides on the wings of Aaron's animation skills. Bravo!”

— GLEN KEANE

(DIRECTOR: DEAR BASKETBALL; LEGENDARY ANIMATOR: BEAUTY & THE BEAST, THE LITTLE MERMAID)

“A one-man labor of love, where every frame and detail is crafted to deliver a powerful message through classic animation.”

— DON HAHN

(PRODUCER: THE LION KING, BEAUTY & THE BEAST, WHO FRAMED ROGER RABBIT?)

“*Snow Bear* is a beautifully crafted and expertly directed short film that deals with a personal story thru universal emotions of love and loss as seen via the unique lens of master animator and filmmaker Aaron Blaise. This is an important film at a time of great danger to the natural world.”

— TOMM MOORE

(DIRECTOR: THE SECRET OF KELLS, SONG OF THE SEA, WOLFWALKERS)

“Traditional animation is alive and well in the hands of Aaron Blaise.

*Snow Bear* packs a powerful punch in defense of Nature and the universal need for connection!”

— SERGIO PABLOS

(DIRECTOR: KLAUS; CO-CREATOR: DESPICABLE ME)



## LOG LINE

When a lonely polar bear can't find a friend... he *makes* one!

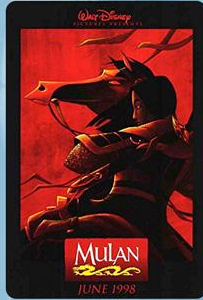
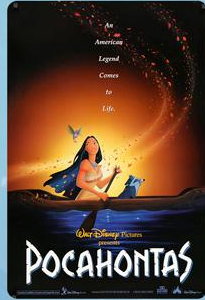
### Technical Details:

- Completed: November 2024
- Country of Origin: USA
- Runtime: 11:26
- Language: No Dialogue
- Aspect Ratio: 16x9
- Resolution: 4K
- Frame Rate: 24FPS
- Formats: DCP, MOV (ProRes), MP4
- Sound: 5.1 Surround
- Drawing Count: 12,000+

## SYNOPSIS

Set in a rapidly changing world, *Snow Bear* tells the story of a lonely polar bear in an unforgiving environment on his quest to find a friend.

Created entirely by Oscar-nominated animator Aaron Blaise over three years, the film features stunning hand-drawn animation that captures both the humor and poignancy of its central character's quest for connection. Balancing moments of laughter and heartfelt emotion, this short film pays tribute to the timeless art of traditional animation while offering a gentle reminder of the bonds that unite us all.



## Aaron Blaise

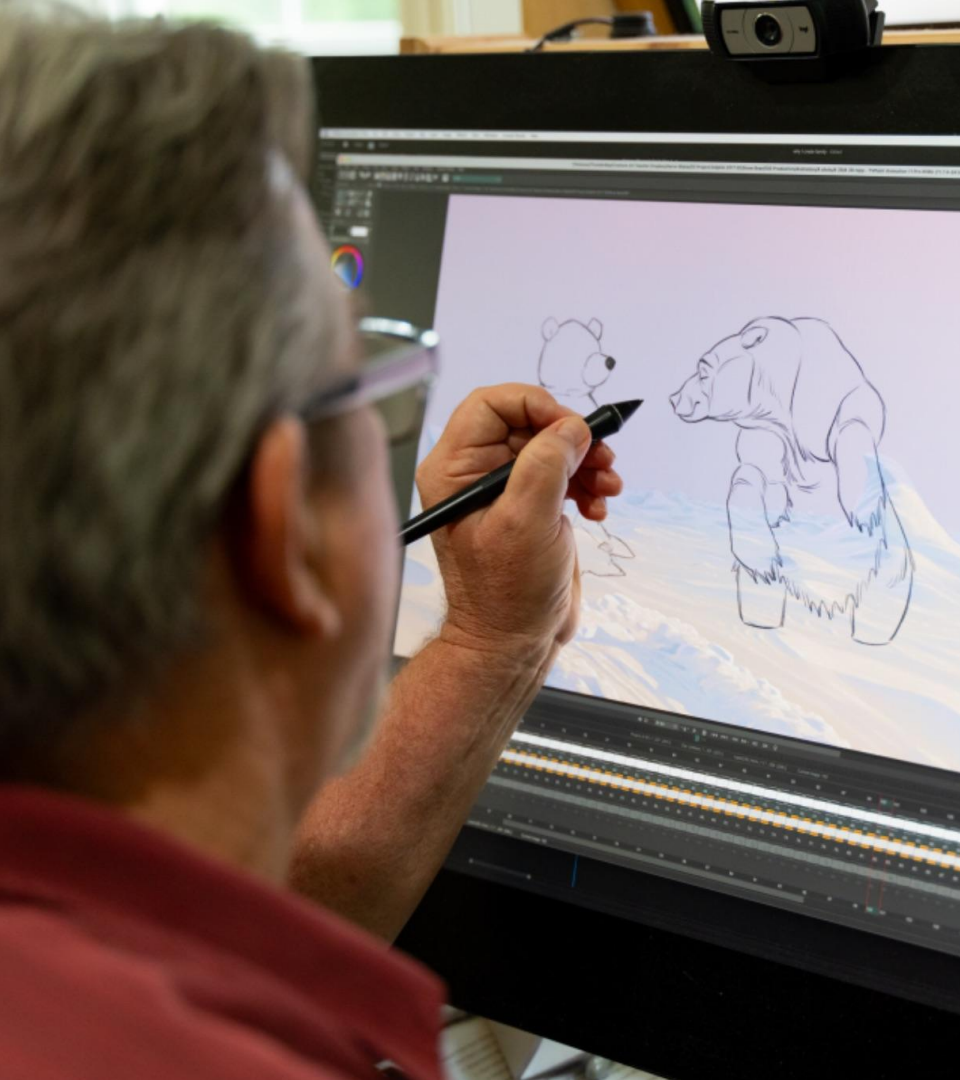
Creator, Director & Animator

For 21 years Aaron was with Walt Disney Feature Animation where he helped to create some of the greatest animated films ever made. During that time he worked as an animator or supervising animator on *The Rescuers Down Under*, *Beauty and the Beast*, *Aladdin*, *The Lion King*, *Pocahontas* and *Mulan*.

In 2003 he was director of *Brother Bear* for which he earned an Oscar nomination for Best Animated Feature Film. After *Brother Bear* he helped to develop several projects but ultimately left Disney to pursue an opportunity back home in Florida. Aaron also served as a 2D Animation Supervisor and Character Designer for the *The Bear and the Hare* an advertisement loved by millions around the world.

He was recently named as the 2025 recipient of the Winsor McCay Lifetime Achievement Award in animation by ASIFA-Hollywood and was presented the award at the 2025 Annie Awards.

In 2013 Aaron and his business partner, Nick Burch founded one of the world's top online art schools, [CreatureArtTeacher.com](http://CreatureArtTeacher.com)



## Director's Statement

I spent over three years bringing *Snow Bear* to life in my personal studio, working on every aspect of the film's creation from storyboards to final animation... entirely on my own. This project marks a return to my roots as an artist and storyteller, reminiscent of my days animating on *The Lion King*, *Beauty and the Beast*, and *Aladdin*, as well as directing Disney's *Brother Bear*. In *Snow Bear*, I wanted to capture something deeply personal: a sense of awe for the natural world, paired with the emotional depth that only hand-drawn, frame-by-frame animation can convey.

The film was inspired by the resilience of our planet's polar regions, and I'm honored that both Polar Bears International and the National Parks Conservation Association have chosen to stand behind it. Their missions underscore the very themes I hoped to illustrate: the fragility of our environment, and the importance of protecting it for the generations yet to come.

More than anything, I want viewers to leave this short film having felt a range of emotions from laughter at a lonely polar bear's resourcefulness to reflection on how we, too, can find hope in the most challenging of circumstances. Ultimately, I believe that if *Snow Bear* can make audiences pause, reflect, and feel even a spark of wonder, then I've succeeded in my goal of bringing a little more beauty to our world.



## Nicholas Burch

Producer

Nick Burch is a lifelong creative and entrepreneur with a background in animation, education, and digital media. A graduate of Ringling College of Art & Design in Computer Animation, he went on to teach at the school before co-founding the world renowned online art education platform [CreatureArtTeacher.com](http://CreatureArtTeacher.com).

Nick is also the co-creator of the 48 Hour Guerrilla Film Competition and has produced a wide range of creative and technical projects across film, web, and interactive media. As producer of *Snow Bear*, he helped shepherd the film from its earliest development through festival distribution, combining his passion for storytelling with his expertise in creative problem-solving.

## Chuck Williams

Consulting Producer

Chuck Williams is a veteran filmmaker and producer with over 30 years of experience in the animation and entertainment industry. A former producer at Walt Disney Feature Animation, his credits include films such as *Brother Bear*, *Sonic the Hedgehog*, and *Aladdin*.

Known for his ability to guide creative teams and bring powerful stories to life, Chuck has served as a mentor and collaborator on numerous independent projects. As consulting producer on *Snow Bear*, he brought invaluable insight and support to the film's development, helping shape its narrative arc and emotional resonance while championing Aaron Blaise's vision.



**Mark Mancina**  
Composer

*Snow Bear* features an original score by Grammy-winning composer Mark Mancina, celebrated for his groundbreaking work on *The Lion King* and a roster of iconic films including *Moana*, *Speed*, *Twister*, *Tarzan*, and *Brother Bear*.

A multi-instrumentalist with a gift for spanning genres, Mancina has collaborated with music legends such as Elton John, Phil Collins, and Seal. Drawing on his diverse background and passion for storytelling, he brings an emotional depth to *Snow Bear* that enriches the film's heartwarming journey.



**Marlon E. Espino**  
Composer

A multifaceted storyteller whose compositions are as strikingly diverse as his singular artistic voice, Marlon E. Espino has scored films spanning action, adventure, comedy, drama, and suspense. His credits include work on titles such as *Moana*, *Moana 2*, *The Lego Batman Movie*, and *The Sea Beast*.

Renowned for his ability to craft immersive, emotionally rich scores, Espino brings that same thoughtful touch to *Snow Bear*, helping the film's narrative resonate through its evocative soundtrack.

A polar bear is sitting on a vast, undulating landscape of snow and ice. The scene is bathed in a soft, blue light, suggesting a clear, cold day. The bear is positioned in the middle ground, looking towards the right. The terrain is covered in gentle, rolling hills of snow, creating a sense of depth and isolation. The sky is a uniform, pale blue, adding to the serene and quiet atmosphere of the scene.

## Aaron Blaise on the Importance of Music in *Snow Bear*:

“With *Snow Bear* having no dialogue, the score takes on an even greater role in telling the story and guiding the audience emotionally. Music becomes the primary voice for the characters, setting the tone for both the lighter moments and the deeper themes at the heart of the film. It’s amazing how a powerful melody can capture a character’s hopes, loneliness, and triumphs without a single spoken word.

That’s why working with incredibly talented composers like Mark and Marlon has been such a meaningful collaboration for me. Their music brings *Snow Bear* to life in so many ways. It elevates every scene and fully immerses us in this Arctic world.”



## WITH PURPOSE:

We're honored to partner with these two organizations dedicated to protecting our planet's most treasured habitats and wildlife. Through *Snow Bear*, we hope to inspire awareness and support for their vital missions.



National Parks Conservation Association (NPCA) is the only independent, nonpartisan membership organization devoted exclusively to advocacy on behalf of the National Parks System. Its mission is "to protect and enhance America's National Park System for present and future generations."

<https://www.npca.org/>



Polar Bears International (PBI) is a non-profit organization working to protect polar bears and their fragile habitat. Their mission is to save polar bears and the sea ice they depend on by supporting cutting-edge research, raising awareness, and inspiring global action.

<https://polarbearsinternational.org/>





*Snow Bear* Official Website: <https://SnowBearShort.com/>

Behind the Scenes: [Watch](#)

Teaser: [Watch](#)

Private links available to programmers upon request.

For interviews, press requests, and inquiries, please contact: [booking@creatureartteacher.com](mailto:booking@creatureartteacher.com)

# Snow Bear

