

CASSANDRA

AVAILABLE ON

Fibe | tv1

 HOT SHOE
PRODUCTIONS



SUMMARY

This locally produced series is available to stream on Bell Fibe TV1. This emotionally resonant drama from Hot Shoe Productions tells the story of Seymour, a non-verbal autistic musician whose world is turned upside down when his steadfast support worker, Cassandra, suddenly leaves.

What follows is a story of courage and growth, as Seymour steps into the unknown with Michael, a new support worker who challenges him to embrace the music within him.

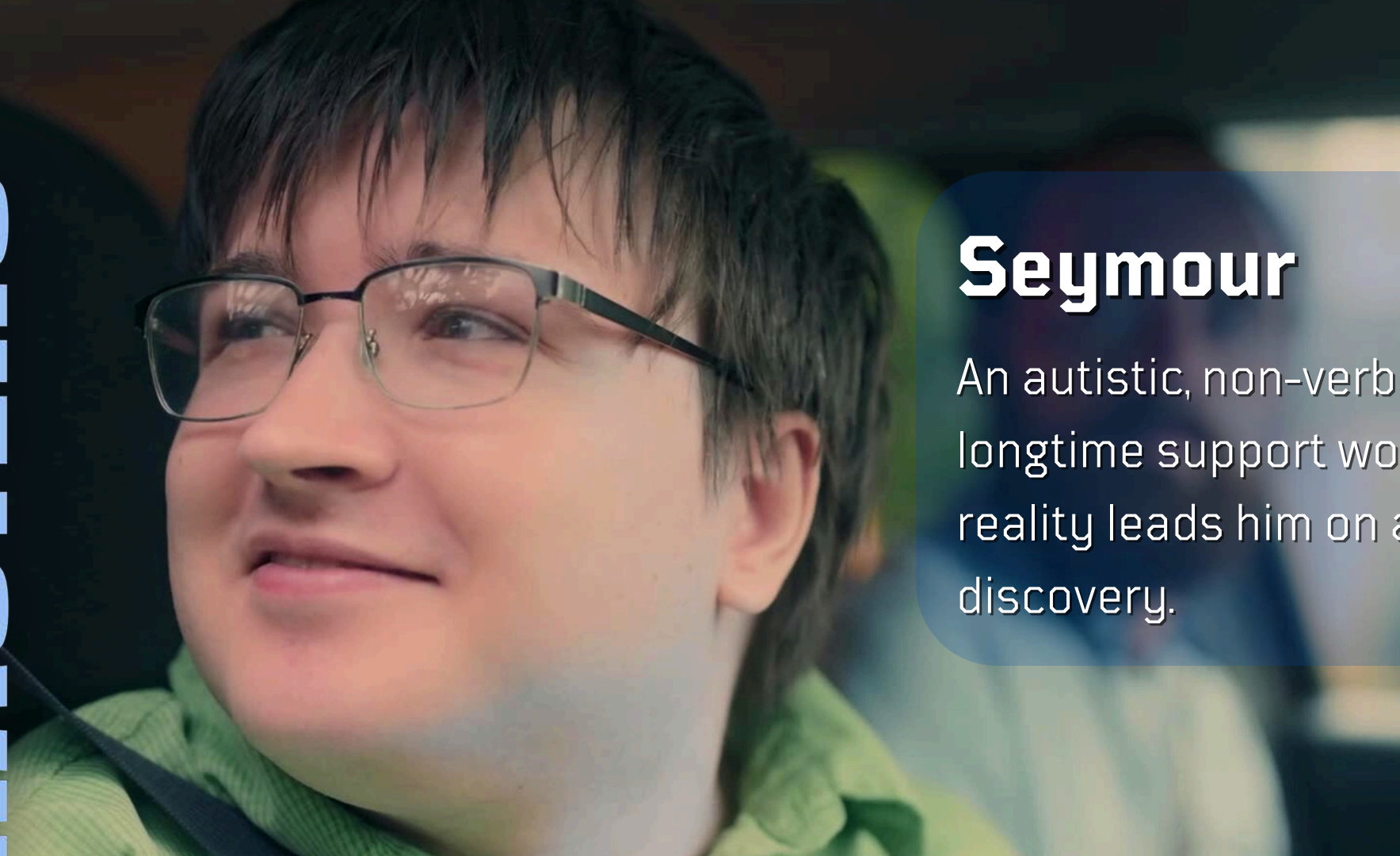


SERIES CONTRIBUTORS

With contributions from Miyohtin Media, Sol One Productions and Affinity Production Group along with a passionate creative team behind the scenes, Cassandra promises to be a series that lingers long after the final note is played.

This unique series began as a short film for the Digi60 Filmmakers' Festival and now has expanded into this new Canadian original series. Created by local filmmakers with local talent in front and behind the camera, this series showcases the talent that Ottawa's film scene can produce.

KEY CHARACTERS



Seymour

An autistic, non-verbal musician who's life is thrown into disarray when his longtime support worker, Cassandra, is assigned a new job. Seymour's new reality leads him on a turbulent journey of self-determination and self-discovery.



Michael

A music school grad doing his best to keep his life together, Michael has long felt intimidated by the uncertainty of his future. He does his best to counteract his insecurities with humor, and brings his positive attitude into his new role as Seymour's worker.

Nina

Seymour's fiercely protective mother is constantly torn between her responsibilities and her fears and anxieties. She tries to foster a positive environment for Seymour at home, despite the challenges of those who don't accept him in the outside world.



Cassandra

Deeply empathetic and devoted, Cassandra has been Seymour's worker for the majority of his (and her) formative years. When she is assigned a new job, she becomes responsible for a key decision that will impact Seymour's life.



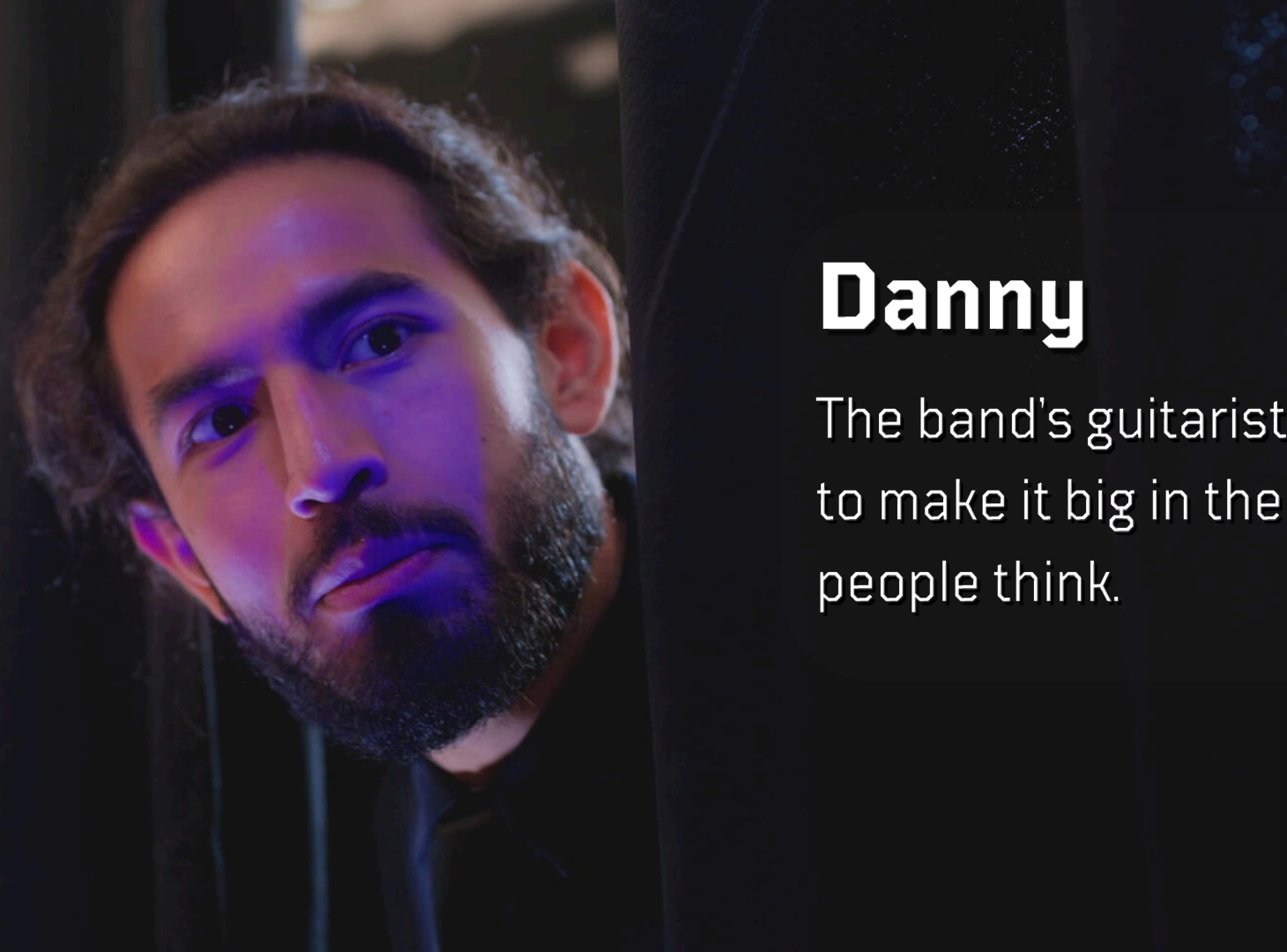
KEY CHARACTERS

KEY CHARACTERS



Earl

A deeply driven and hardworking musician, Earl's career has long remained his first priority. He makes an active effort to include Seymour in the band.



Danny

The band's guitarist and Earl's childhood best friend. Danny is driven by a desire to make it big in the music industry, and is very concerned with what other people think.

CASSANDRA



STARRING CLAYTON DUCHARME JORDAN QUAYLE STEPHANIE LALONDE DAVID MURPHY ANGELO LEO LIONEL BERMUDEZ
WRITTEN BY CLAYTON DUCHARME, DAVID MURPHY & BEN BERGERON PRODUCED BY BEN BERGERON & COLIN ZIRALDO DIRECTED BY BEN BERGERON
DIRECTOR OF PHOTOGRAPHY COLIN ZIRALDO ASSISTANT DIRECTOR MICAELA CHEESEMAN EDITED BY COLIN ZIRALDO & BEN BERGERON

MARCH 27

Fibe | tv1

“As producers, it is our responsibility to authentically amplify the voices of the communities we serve. With this series, we aim to use positive representation of autistic and neurodivergent characters to tell an impactful and meaningful story.

Neurodivergent individuals were directly involved in every aspect of production, from development all the way through to post-production. We hope this project will resonate with both autistic and non-autistic audiences, and pave the way for more stories like this to be told in the future.”

- A Message From The Creators Of Cassandra



GALLERY





ABOUT THE CREATORS

Top Left: Ben Bergeron (Producer, Writer, Director, Editor)

Top Right: Clayton Ducharme (Writer, Actor, Composer)

Bottom Left: David Murphy (Writer, Actor)

Bottom Right: Colin Ziraldo (Producer, Director Of
Photography, Editor, Colorist & VFX)

The creators of Cassandra are a team of neurodivergent artists who bring unique perspectives and lived experiences to their storytelling. Their shared commitment to authentic, character-driven narratives is shaped by the ways they see and interact with the world, making Cassandra a project deeply rooted in diverse ways of thinking, feeling, and creating.

CONTACT US

EMAIL

info@hotshoe.ca

MOBILE

613-618-6443





THANK YOU!