



LOOK DEEPER

LACHINE

LOOK DEEPER

Lachine

Discipline: Drama/Romance/Arthouse

Tagline: "Look Deeper"

Leads: Chen Xi, Charlotte Aubin , Format: Red 8K/24fps

Similar Films: Hiroshima Mon Amour (1959), L' Avventura (1960),

The Unbearable Lightness of Being (1988), Before Sunrise (1995)

Logline: A stoic young filmmaker struggles to make a traditional romance within a system and a world in flux.

Summary

A stoic young filmmaker struggles to make a traditional romance within a system and a world in flux. While attempting to balance his art within the ever expanding quagmire of social political stances and counter stances, he begins to realize how absurd it all is, with the only savior being an authentic connection with the young heroine of his newest film and the locale of which it's set in, both of which are also looking for their own essence in this self-righteous and increasingly volatile new world that we live in.

LACHINE



LOOK DEEPER

Director's Vision

"Lachine" is a throwback to the traditional art house romances of the 50s and 60s, such as Hiroshima Mon Amour, L'Avventura, L'Eclisse, Red Desert, Un Homme, et Une Femme, and bears social critique similar to The Unbearable Lightness of Being. The characters and the story serve as a reflection of the era and beg for further introspection of both the times and how we choose to exist within it. The style of the film will harbor back to that era of filmmaking where the charisma of the leads, the cinematography, the backdrops, and general milieu are as powerful as the plot itself. As such, the film will be deliberately thin on plot, but rather exist in a mood, that will precipitate internal dialogue from the viewers as aspects of the modern society are played out in all their artifice, but never condescending nor insulting, rather observational. I think only within a romance can we deal with some of the current social trends without being over burdened with a stance in any direction.

The film will be similar visually to an Antonioni piece, with blocking and character interaction between the male and female leads being similar to Before Sunrise. At the end of the day, our goal is to make a romantic film that is organic in nature, but serves to subtly critique the social trends of the era, similar to Antonioni's best works, utilizing cinema as a subtle critique of the times. It is imperative that any social commentary exist as a matter of fact, never preachy and never overt, but simply showing the reality of life in this era.

A misstep can lead to disaster as one can only become self-aware when one is not being made fun of. Be wary of this. The dichotomy of modern society is real, but only a gentle nudge can alert people to its flaws. This must be a romance first and foremost, anything else is anecdotal.

LACHINE



LOOK DEEPER

Tech and Vision (No Script)

Film is shot on RED EPIC 8K at 24fps.

Due to the arthouse prose of the director the film uses a simple treatment with scenes mostly shot improvised based on a rough outline, similar to how Wong Kar Wai and Terrence Malick work.

All dialogue and scene action are improvised with nothing more than a brief discussion prior to each scene.

The treatment serves as the foundation for the film, underpinning the structure, narrative and philosophical throughline.

LACHINE



The Look and Feel

The unscripted drama method of filmmaking has been a style used by numerous filmmakers but the two biggest auteurs who have been immensely successful using this format are Terrence Malick and Wong Kar Wai. To give you a better idea of how my film flows, imagine a narrative throughline, stitched together by cinematic montages that help convey, mood and vital plotpoints. Unlike other films of this style my film contains little to no voice over, allowing character's internal thought to remain ambiguous to viewers. This narrative ambiguity is the crux of my style of filmmaking and is what makes my films different from those that have come before.

The following visuals will give you a better idea of the look, tone, thematic arcs, and philosophical underpinning that make up the narrative milieu of Lachine.

LACHINE





Director Michael Suan
Director Filmography
AKP JOB 27 (2013)
THE PRIDE (2020)
Warsaw Film Festival - Free Spirit Award
ReelWorld Film Festival - Best Film
Fantasporto Film Festival - Orient Express
Fantasporto Film Festival - Special Jury



Producer Marcel Giroux
Producer Filmography
MARTYRS (2008)
THE LITTLE GIRL WHO WAS TOO FOND OF MATCHES (2017)
Yorkton Film Festival - Best Picture
Genie Awards - Best Motion Picture
Canadian Screen Awards - Best Motion Picture
Toronto Int'l Film Festival - Best Canadian Feature

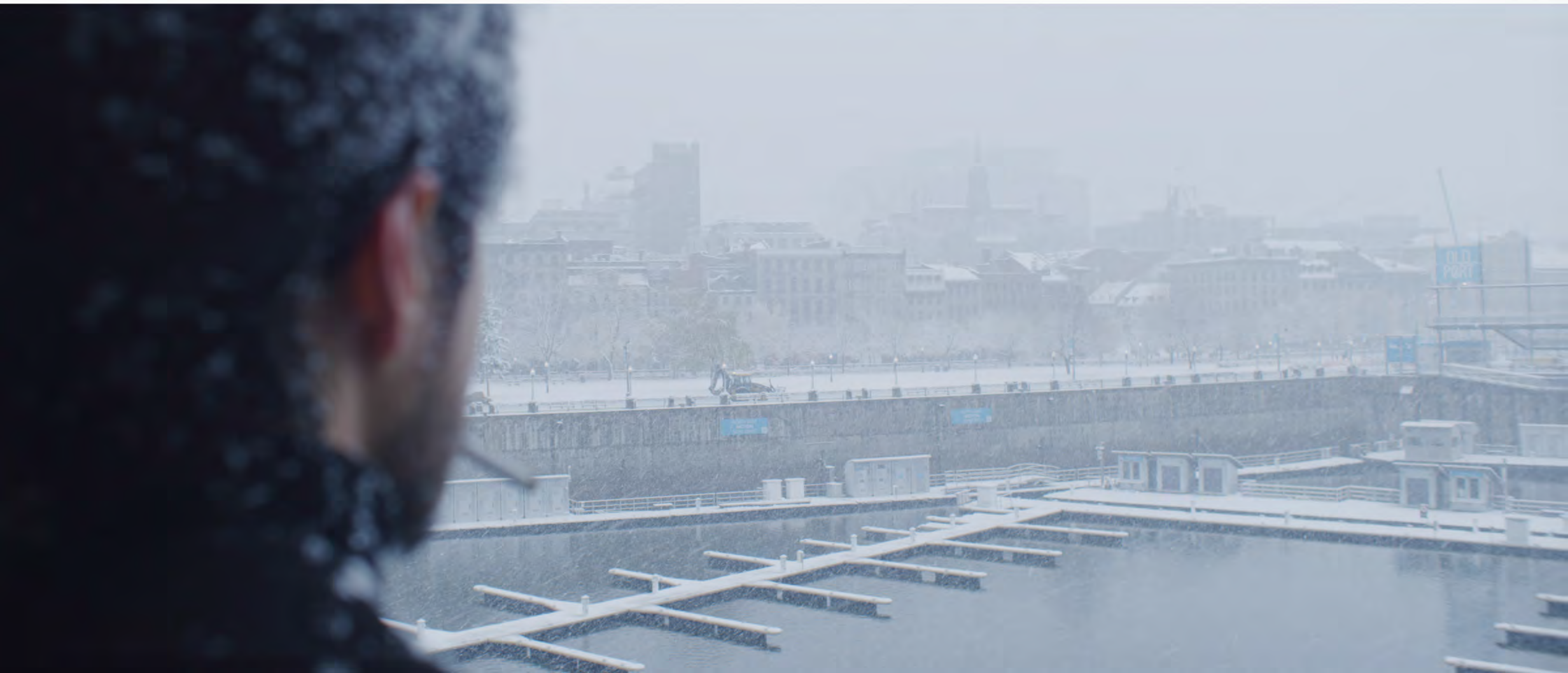
LOOK DEEPER

Director's Statement

The thematic arc of Lachine is "past, present and future".
We long for our past, yet we live in the present, but we must accept both in order to embrace our future.

The spirit of an age changes with time and as humans we must accept this change, yet still retain the essence of our own being. Because being true to yourself when it's convenient is easy, but being true to yourself when it's inconvenient is a test of one's true character.

LACHINE



LOOK DEEPER

Cast
Chen Xi



Charlotte Aubin



LACHINE

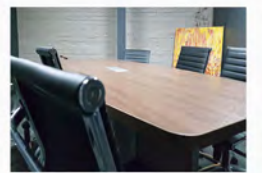
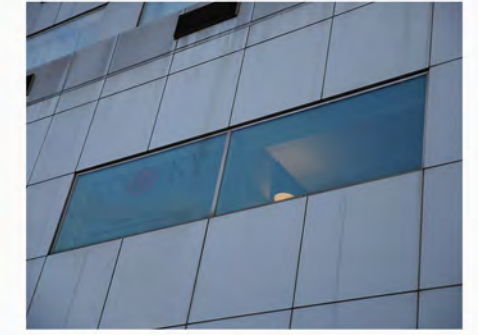
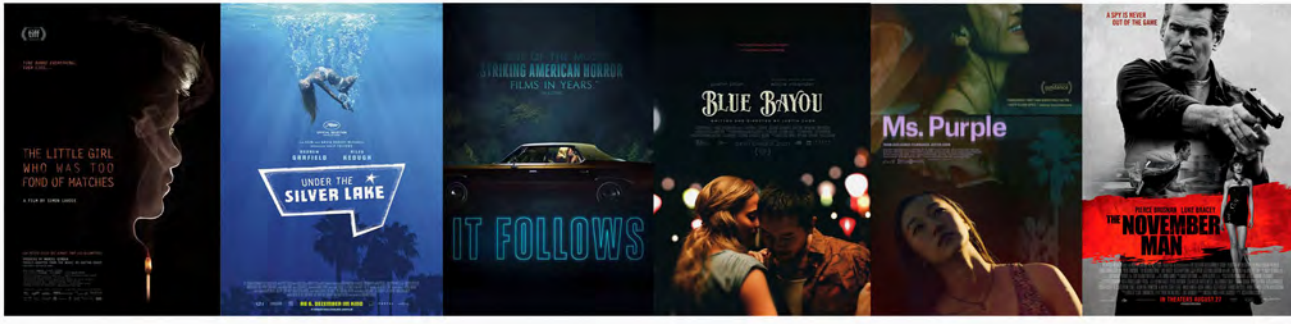




Executive Producer - Alan Pao
Selective Filmography
UNDER THE SILVER LAKE (2018)
BLUE BAYOU (2021)
IT FOLLOWS (2014)
THE NOVEMBER MAN (2014)
Awards: Sundance, Cannes, Etc.



Producer/Director - Michael Suan
Phone 1-647-688-8158 Fax 1-647-349-6035
michaelsuan@kingskyproductions.com
michaelsuan@hotmail.com



KingSky Productions Int'l Ltd. 222 Spadina Ave, Unit 212 Toronto, ON, M5T3B3
www.kingskyproductions.com

LOOK DEEPER

LACHINE

