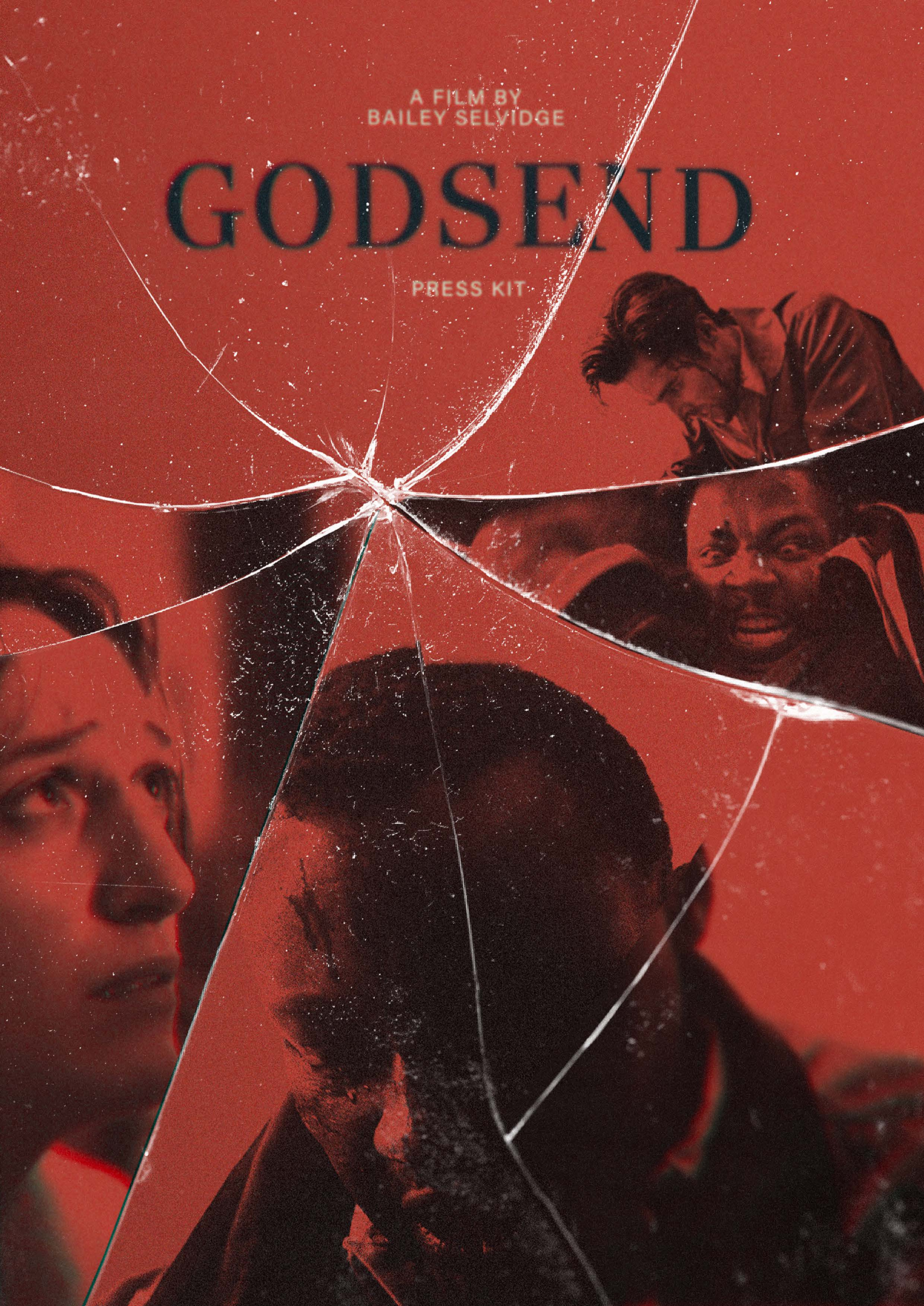


A FILM BY
BAILEY SELVIDGE

GODSEND

PRESS KIT



LOGLINE

DESPERATE TO MEND HIS FAMILY'S DISTRESS, A SELF-OBSESSIVE HUSBAND PURSUES A BRUTAL AND BLOODY STANDOFF WITH ONLY ONE DESIRE: PREVAIL AT ANY COST.

SPECS

PROJECT TYPE _____ NARRATIVE SHORT FILM
GENRE _____ ACTION, DRAMA, THRILLER
TRT _____ 9:54
LANGUAGE _____ ENGLISH
BUDGET _____ \$7,500
SHOOTING FORMAT _____ RED
ASPECT RATIO _____ 2.39:1

THEMES

FEAR & DESPERATION
DANGERS OF SELF-OBSESSION
THE TESTS OF ONE'S MORALS



GODSEND_FINALSTILL_1.10.1



GODSEND_FINALSTILL_1.42.1

THE STORY

ON A TENSE AND UNNERVING MORNING, DAVID, A MAN IN PURE DESPERATION, UNDERTAKES A JOURNEY TO REPAIR THE CRACKS IN HIS FAMILY. IN A CIRCLING DEBATE OF DESIRE AND INDECISION, HIS CONVICTION WILL HIM TO TAKE ACTION AGAINST ANY CONSCIENCE.

AS AN ELUSIVE LURKING PRESENCE, DAVID STALKS A PUT-TOGETHER MAN REplete WITH HIS SOLE FIXATION: A STURDY LEATHER-BOUND BRIEFCASE. BLINDLY ENTRANCED IN A FORTUNATE OUTCOME, DAVID ATTEMPTS TO GET THE CASE AND CREATE A PATH TO TURN HIS LIFE AROUND.

DIRECTORS STATEMENT

AS A FILMMAKER, I DO ANYTHING POSSIBLE TO BE PART OF THE CREATIVE AND FILMMAKING PROCESS. I TAKE EVERYTHING ON WITH A METICULOUS APPROACH AND INTENSELY PLANNED IDEAS. "GODSEND" IS SIMILAR AS IT FOLLOWS SOMEONE HIGHLY MOTIVATED WITH A METICULOUS APPROACH AND INTENSE PLANS TO CHANGE THEIR FUTURE.

AT ITS CORE, "GODSEND" IS A STRESSFUL NARRATIVE UNDER A SINGULAR PERSONAL EXPERIENCE. WITH INTIMATE FRAMING IT MEANS TO PUSH AND AMPLIFY A CONNECTION FROM WHICH THE AUDIENCE CAN NEVER ESCAPE: LURING EYES AROUND CORNERS, THE IMPACT OF SWIFT PUNCHES, AND QUESTIONS OF MORALITY.

TO ME, LIFE REVOLVES AROUND OUR STRESSORS AND OFTEN THE IMMEDIATE DECISIONS MADE WHEN CONFRONTED WITH THOSE MOMENTS. GODSEND EXPLORES THIS... IN AN INESCAPABLE MANNER.

-BAILEY SELVIDGE



03

GODSEND

CREW AND CAST

EVERY GREAT FILM IS A TAPESTRY OF TALENT AND VISION. OUR CAST AND CREW BLEND CREATIVITY, DEDICATION, AND EXPERTISE TO BRING THE STORY TO LIFE. MEET THE EXCEPTIONAL INDIVIDUALS WHOSE PASSION AND HARD WORK HAVE MADE THIS CINEMATIC EXPERIENCE POSSIBLE.

CREW AND CAST

GODSEND

BAILEY SELVIDGE

WRITER & DIRECTOR

Hailing from Miami, FL, Bailey is the Writer and Director of "Godsend." With a deep passion for the action-thriller genre, he set out to make a film with an aura of unrelenting stress and pressure. Added to his love for gore, he sought a brutal texture to the film's bleak world and characters. Experienced as a Producer and Assistant Director on over twenty productions, he's had films screened at Sundance, SXSW, and Cannes, with collaborations under Red Bull, producer Daren Dean, and actor Ruben Blades.



CATHERINE WIESEHUEGE

LEAD PRODUCER

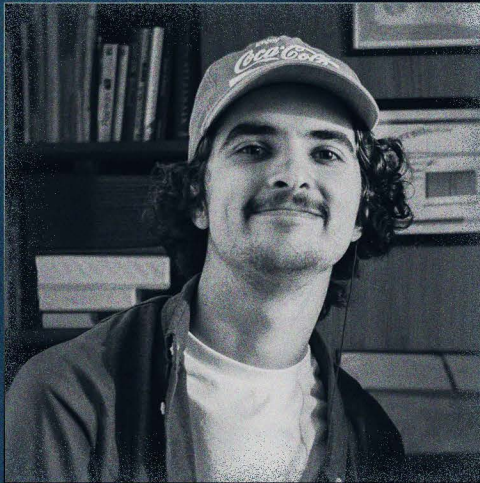
Catherine is the Lead Producer of "Godsend" from Austin, TX. Aiming to create stories that have a life beyond the screen, Catherine loves seeing how films affect and inspire the world around us. As a producer, she oversaw the production timeline and established strong communication across all the film's departments. Now a Film & Television graduate from the Savannah College of Art and Design, she's a Research and Development Intern.

DAKOTA CALLICOTT

DIRECTOR OF PHOTOGRAPHY

Dakota Callicott is the passionate and talented Director of Photography behind "Godsend." Originating from Bend, Oregon, his interest in photography came from the captivating beauty of the natural world. Dakota now boasts a diverse background in experimental and narrative storytelling and is a key collaborator for "Godsend. Through dedicating months of hard work, meticulous framing, choreography rehearsal, camera tests, photobarding, and location scouts there was no stone left unturned. With keen focus, he captured a tense, persona, and brutal aesthetic.





JACOB DENTON

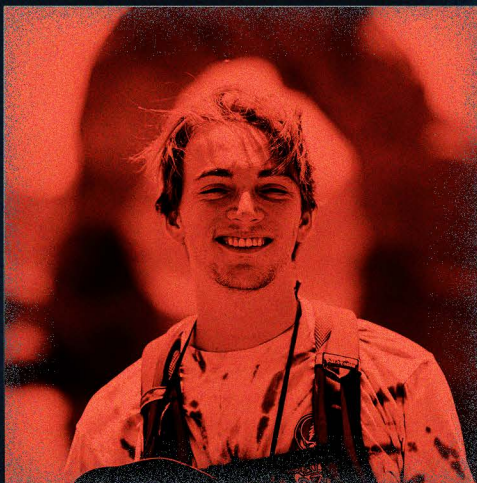
CO-PRODUCER & 2ND ASSISTANT DIRECTOR

Jacob Denton is an independent Creative Producer based out of Houston, TX. who served as a Co-Producer and 2nd Assistant Director on "Godsend." Having produced and directed multiple films and commercials himself, he and Bailey have collaborated countless times. Working together created a dynamic between them that allowed Jacob to tackle the ups and downs of filming, specifically with on-set shooting timelines and crew necessities for all personnel. Jacob was also essential in aiding with casting and final crew requirements in the weeks before filming.

AIDAN GOMEZ

CO-PRODUCER

Aidan Gomez is a Producer and Director from Charlotte, NC, and a recent graduate from the Savannah College of Art and Design's Film & Television program. As a Co-Producer, he honed in on shooting locations, budgeting, and on-set assistance wherever needed. He was also instrumental in crew transportation and attaining much of the filming equipment used. Aidan is endlessly resourceful and resolved countless production roadblocks from pre-production to post-production.



ELI ROTHSTEIN

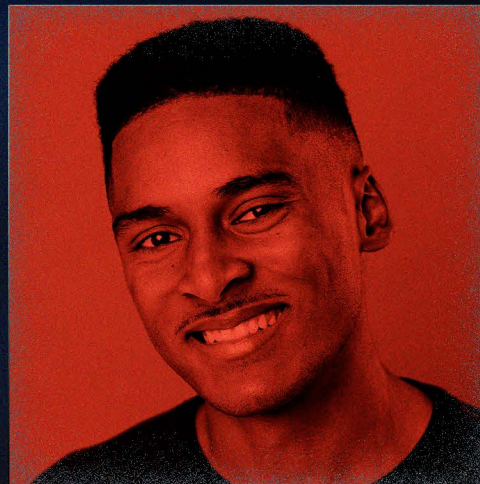
ARMORER & 1ST ASSISTANT DIRECTOR

Originally from Greenville, South Carolina, Eli works as a Production Assistant and Director in Savannah, Georgia. Serving as the 1st Assistant Director and armorer for "Godsend" he and Bailey had collaborated on many shorts prior. Whilst filming he led cast and crew safety in a densely staged and active environment, created and followed a shooting schedule, and delegated tasks across shooting departments. He also served as a licensed armorer and handled all weapons used during production with utmost safety and professional regulations.

JUSTIN MCCLESKY

FIGHT CHOREOGRAPHER

Justin McCleskey is from New Orleans, Louisiana, and was the Fight Choreographer for "Godsend." With a focus on acting and stunt choreography, his passion has always been drawn to professionally staged combat. Having worked on many shorts prior, this was Justin's first undertaking of creating a fight sequence that required multiple production teams and intense makeup. Justin and Bailey had a great time creating the fight sequence from the ground up, writing every beat on paper to then practicing on one another to ensure they created a strong unified vision.



MATISON LEBLANC

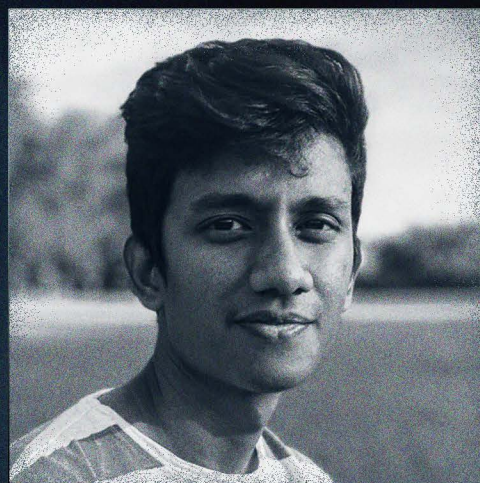
SPECIAL EFFECTS MAKEUP

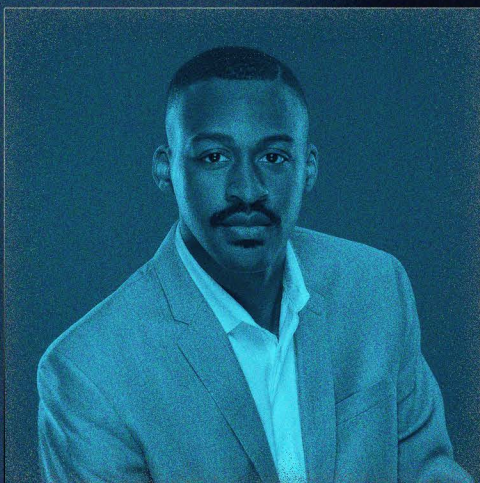
From Mogan City, Louisiana, Matison LeBlanc is a writer, director, and makeup artist based in New Orleans. Working as the Key Special Effects Makeup artist for "Godsend," she created a multi-staged design for the look of every character in the film. With molded fingers, full-face prosthetics, and buckets of blood for the camera, Matison instilled an ongoing brutalization to the world and characters in "Godsend." Her role was vital in deepening the mood, feeling, and character relationships in the film.

ASHUTOSH ROKUDE

PRODUCTION DESIGNER

Ashutosh is a Production Designer, Visual Artist, and Architect from Pune, India. With a rich artistic background and a passion for creating captivating visuals, Ashutosh served as the Production Designer for "Godsend." Staging a tattered home and abandoned warehouse, he worked on necessities and textures that felt prominent in the character's world. Additionally, Ashutosh created multiple props out of foam and various light materials for use during the fight sequence to create on-screen believability.





ELLIOTT YOUNG

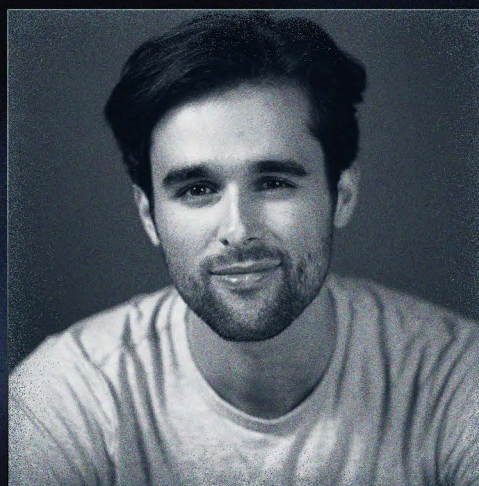
ACTOR - DAVID

Born and raised in Cincinnati, Ohio, Elliott is an actor continuously striving to engage in human exploration through art. He began performing at Wright State University in theater and short films to develop his process. "Godsend" marked a departure from his usual roles, featuring a lead performance with minimal dialogue and intense combat. His physical presence was crucial in bringing David to life and capturing his evolving humanity. Balancing intensity with care and complex choreography, Elliott embraced every aspect of the character and film.

CHRIS NAUGHTON

ACTOR - JEROME

Chris Naughton is an Actor, Director, and all-around performing artist from Washington D.C. In pursuing his Bachelor's and Master's degrees, Chris acted in many theater and film productions honing his craft. As a theater director, he staged combat many times and was comfortable with prop weapons and the ins and outs of stunt choreography. In approaching Jerome, he took on a contrasting tenderness and approachability with an inner coldness to the character that lurked below.



GRAYLIN LUTCHEY

ACTOR - WAYNE

Graylin Lutchev is a film actor local to Atlanta, GA focused on action and technical-based performances. Experienced in security and combat for the screen, he learned to create an enforcing on-screen presence that appears across many of his roles. In "Godsend" his strength and demeanor were essential to portray Wayne and capitalize on unsuspecting moments with vast intensity and brutality.

GODSEND

PRODUCTION STILLS

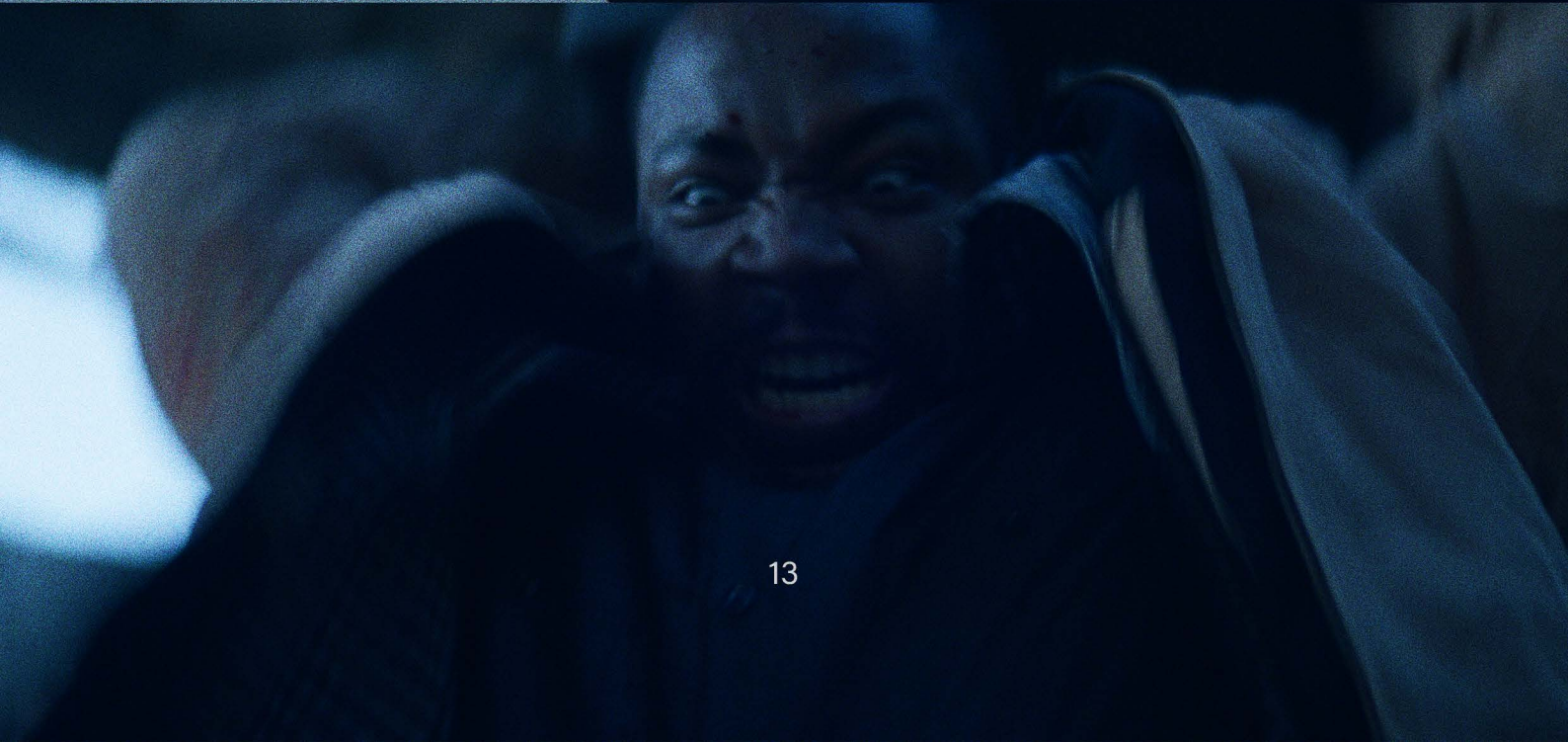
DISCOVER THE ESSENCE OF OUR FILM THROUGH THESE CAPTIVATING PRODUCTION STILLS. EACH IMAGE CAPTURES THE ARTISTRY, EMOTION, AND CINEMATIC MOMENTS THAT DEFINE OUR STORY. EXPLORE THE VISUAL JOURNEY THAT BRINGS OUR FILM TO LIFE.

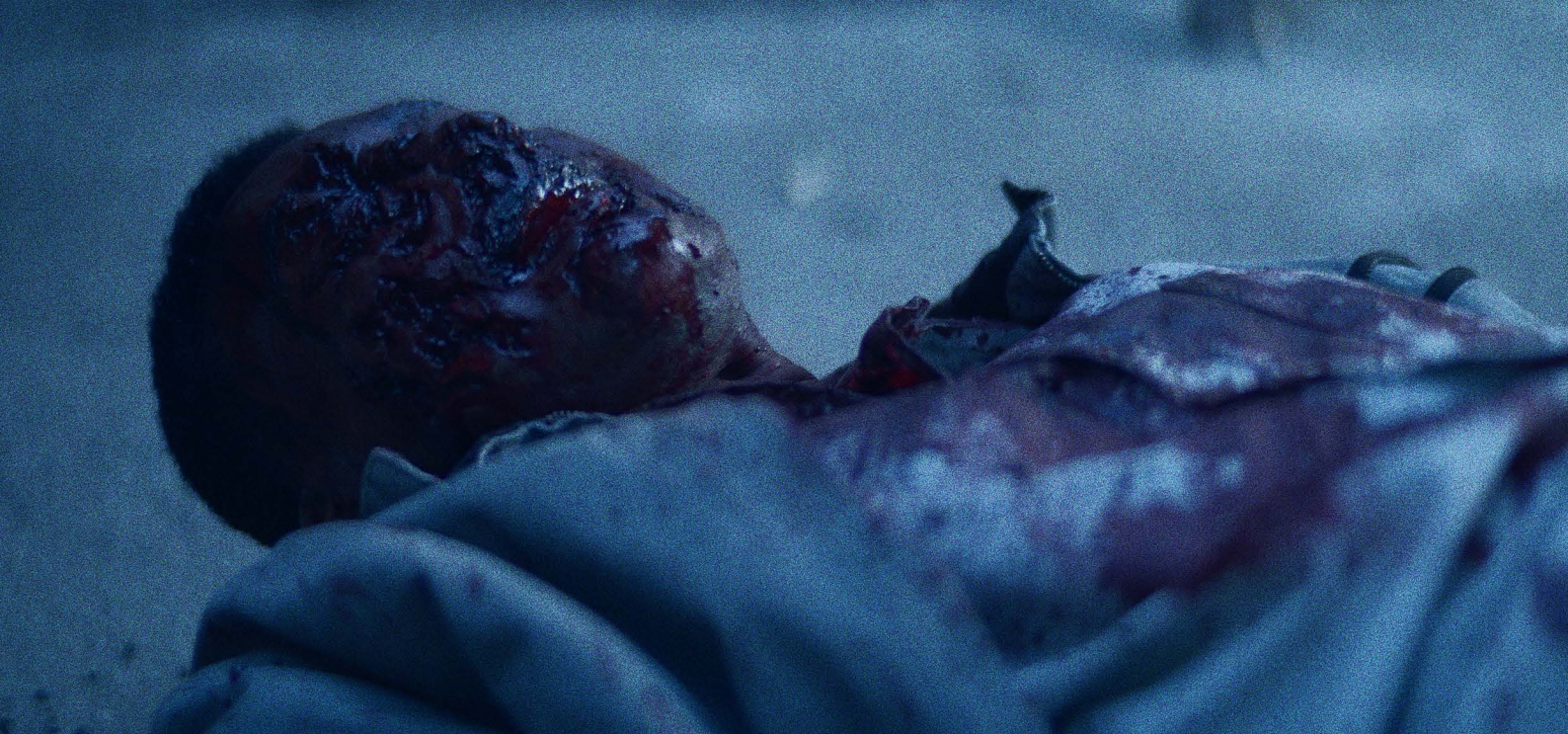
PRODUCTION STILLS

GODSEND











GODSEND

BEHIND THE SCENES

GET A BEHIND-THE-SCENES LOOK AT THE MAGIC OF FILMMAKING WITH OUR PRODUCTION STILLS. THESE CAPTIVATING IMAGES CAPTURE THE ESSENCE OF OUR SET, THE ENERGY OF THE CAST AND CREW, AND THE ARTISTRY THAT GOES INTO EVERY SCENE. EXPLORE THE MOMENTS

BEHIND THE SCENES

GODSEND





