



JALEBI

**NAVIGATING FAMILY, CULTURE, AND
THE QUEST FOR PERSONAL HAPPINESS.**



LOGILINIE

**A SUCCESSFUL LAWYER FROM A CLOSE-KNIT INDIAN FAMILY
DECIDES TO PART WAYS WITH HER LONG-TERM BOYFRIEND.
HOWEVER, WHEN HER FAMILY DISCOVERS THE NEWS, SHE FINDS
HERSELF ON A PERSONAL TRIAL.**

SHORT SYNOPSIS

"Jalebi" tells the story of Anya, a successful lawyer from a traditional Indian family, who decides to end her long-term relationship. Her decision sparks a heated debate within her family, revealing deep-rooted cultural and generational differences. The film explores the tension between personal happiness and familial obligations, ultimately questioning how one can honor both.

Medium synopsis



The story begins with Anya returning home after a long day at work. She is tired and just wants to go to her room to sleep for the night. However, as soon as she enters the living room, she finds her family waiting for her. They inform her that they have been waiting for her and want to talk to her. It turns out that they have learned about her recent breakup and are trying to convince her to reconsider her decision. They question her reasoning and hope that she will change her mind.

In discussing whether her decision to break up is right or wrong, the story leads to a deeper discussion of Anya's desire to live her life on her own terms, which she feels she isn't doing because she places too much importance on her family's approval. However, the story is ultimately about Anya realizing that while her family and their opinions are important, her happiness should be her top priority.

LONG SYNOPSIS

"JALEBI" OPENS WITH ANYA, A SUCCESSFUL LAWYER FROM A CLOSE-KNIT INDIAN FAMILY, ENDING HER LONG-TERM RELATIONSHIP IN A MOMENT OF QUIET SOLITUDE. HER DECISION, MADE IN THE CONFINES OF A SMALL BATHROOM, CONTRASTS SHARPLY WITH THE LIVELY CHAOS THAT AWAITS HER OUTSIDE—A FAMILY PREPARING FOR AN ENGAGEMENT CELEBRATION THEY BELIEVE IS FOR ANYA AND HER NOW EX-FIANCÉ.

AS ANYA TRIES TO CONVEY HER FEELINGS AND BREAK THE NEWS TO HER FAMILY, SHE FINDS HERSELF FACING NOT ONLY THEIR SURPRISE BUT THEIR DEEP-SEATED OPINIONS ON LOVE, DUTY, AND TRADITION. THE DEBATE GROWS HEATED AS EACH FAMILY MEMBER, FROM HER COMMANDING MOTHER SHALLU TO HER REBELLIOUS BROTHER RUDRA, WEIGHS IN WITH THEIR PERSPECTIVES. ANYA, BURDENED BY THE WEIGHT OF THEIR EXPECTATIONS, EVENTUALLY REACHES HER BREAKING POINT. THE UNEXPECTED ARRIVAL OF PAWAN, A CHARACTER WHO BRINGS A FRESH PERSPECTIVE, FORCES THE FAMILY TO RECONSIDER THEIR VIEWS AND OFFERS A GLIMMER OF UNITY AMIDST THE CONFLICT.

THROUGH ANYA'S JOURNEY, "JALEBI" EXPLORES THE INTRICATE BALANCE BETWEEN INDIVIDUAL HAPPINESS AND FAMILIAL OBLIGATIONS, SHEDDING LIGHT ON THE CULTURAL CLASHES AND GENERATIONAL DIFFERENCES THAT OFTEN SHAPE PERSONAL DECISIONS. THE FILM'S INTIMATE, HANDHELD CAMERA STYLE IMMERSSES THE AUDIENCE IN THE EMOTIONAL INTENSITY OF ANYA'S WORLD, DRAWING THEM INTO THE HEART OF HER STRUGGLE.



Ayushi Khurana

DIRECTOR'S BIO

Ayushi Khurana is an experienced producer specializing in production, storytelling, and creativity. With a strong background in law, she excels in research, development, and teamwork. Ayushi has worked on numerous projects and short films, bringing diverse and impactful narratives to the entertainment industry. With extensive experience in project management, and creative direction, Ayushi thrives in fast-paced environments.

DIRECTOR'S STATEMENT

At the heart of the narrative lies the story of a successful lawyer grappling with a profound personal dilemma. She yearns to break away from a long-term relationship with her boyfriend, a decision prompted by her evolving aspirations and inner conflicts. However, her resolve faces a difficult obstacle—the strong opinions and contrasting perspectives of her closely-knit family. Through this compelling journey, I intend to delve into the intricacies of the protagonist's struggle, navigating the intricacies of her professional life while attempting to assert her autonomy in personal matters. Her desire for independence clashes with the deeply rooted traditions and expectations of her family, leading to exploration of cultural clashes and generational differences.

CHARACTERS



Anya
THE DAUGHTER

Anya is a 25-year-old practicing lawyer, who has made her space as a strong individual in the court but not in her home.

She has always been an obedient daughter, who is loved by everyone because she listens to everyone and abides by the values and morals of her family.



PLAYED BY-

SONIA VOJRATI

Rudra

THE SON

Rudra is the second child of the family, he has always been under the shadow of Anya, which has its perks but also a lot of cons for him.

He has always been compared to her which has lead him to be a rebel and also to give up on academics and college.



PLAYED BY-

ADI DHINGRA

Shallu

THE MOM

Shallu is a homemaker who got married at a very young age. Since then, her entire life has revolved around her family. She is a strong and commanding presence, and everyone obeys her. However, she also feels like something is missing in her life, but she doesn't have the time to figure out what that is.

Her children are her pride and accomplishments in short her lifelong projects.



PLAYED BY-

ATSHVERYA NIDHI

Kavi

THE DAD

Kavi is a selfmade businessman all his life he has made sure that his kids get what he didn't have in his childhood.

His family calls him a workaholic because all his life he has been working and traveling all over the world making his company a global hit.

Now that his children are all grown up he has decided to spend more time with the family.



PLAYED BY-

ANWAR MOLANI

PRODUCTION TEAM



Ayushi Khurana

DIRECTOR

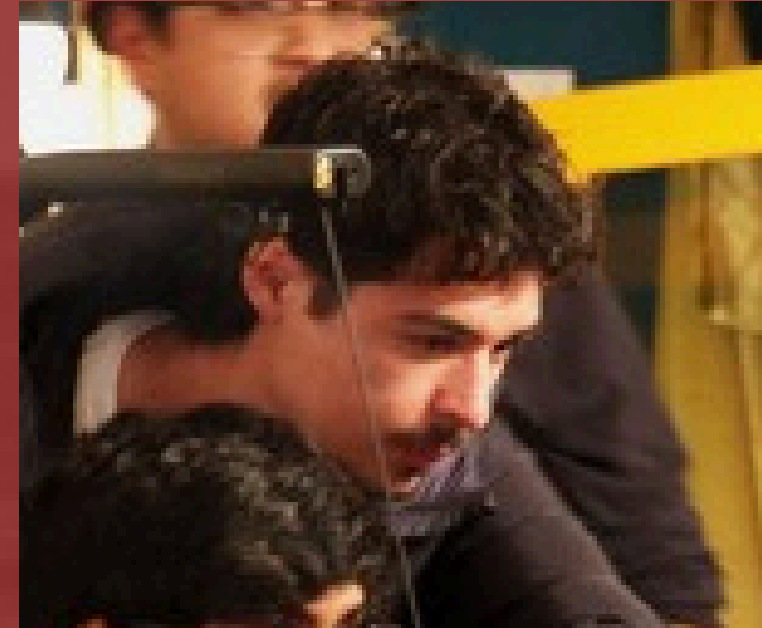
AYUSHI KHURANA IS AN EMERGING FILMMAKER WITH A PASSION FOR STORYTELLING THAT DELVES DEEP INTO THE HUMAN EXPERIENCE, PARTICULARLY WITHIN THE CONTEXT OF CULTURAL AND GENERATIONAL DYNAMICS. WITH A BACKGROUND IN LAW AND A STRONG FOUNDATION IN PRODUCTION AND CREATIVITY, AYUSHI BRINGS A UNIQUE PERSPECTIVE TO THEIR WORK, BLENDING SHARP ANALYTICAL SKILLS WITH A KEEN ARTISTIC SENSIBILITY.



Shreya Thosar

WRITER

A TALENTED WRITER WHOSE WORK FOCUSES ON EXPLORING THE COMPLEXITIES OF IDENTITY, CULTURE, AND FAMILY. AS THE WRITER OF "JALEBI," SHREYA DREW FROM PERSONAL EXPERIENCES AND A DEEP UNDERSTANDING OF INDIAN CULTURAL DYNAMICS TO CREATE A STORY THAT IS BOTH AUTHENTIC AND UNIVERSALLY RELATABLE. THEIR WRITING IS CHARACTERIZED BY RICH CHARACTER DEVELOPMENT, SHARP DIALOGUE, AND AN ABILITY TO DELVE INTO THE EMOTIONAL CORE OF A STORY.



Georgui T Ortiz

FILM EDITOR

AN ACCOMPLISHED EDITOR WITH A TALENT FOR CRAFTING STORIES THAT RESONATE ON BOTH AN EMOTIONAL AND INTELLECTUAL LEVEL. THEIR WORK ON "JALEBI" SHOWCASES THEIR ABILITY TO WEAVE TOGETHER THE FILM'S INTRICATE NARRATIVE THREADS, MAINTAINING THE STORY'S PACING AND EMOTIONAL INTENSITY. WITH A KEEN EYE FOR DETAIL AND A DEEP UNDERSTANDING OF THE FILM'S CULTURAL CONTEXT, ENSURED THAT EVERY CUT AND TRANSITION IN "JALEBI" ENHANCES THE VIEWER'S CONNECTION TO THE CHARACTERS AND THE STORY.



Hritik Mehta

DIRECTOR OF PHOTOGRAPHY

A VISIONARY CINEMATOGRAPHER KNOWN FOR THEIR ABILITY TO CAPTURE THE EMOTIONAL DEPTH OF A STORY THROUGH A LENS. WITH A BACKGROUND IN BOTH DOCUMENTARY AND NARRATIVE FILMMAKING, [DP'S NAME] BRINGS A UNIQUE BLEND OF REALISM AND ARTISTRY TO "JALEBI." THEIR EXPERTISE IN HANDHELD CAMERA WORK, INFLUENCED BY MODERN CINEMA VERITÉ STYLES, ADDS AN IMMERSIVE QUALITY TO THE FILM, DRAWING THE AUDIENCE DIRECTLY INTO THE HEART OF THE CHARACTERS' EMOTIONAL JOURNEY.



BEHIND THE SCENES
BEHIND THE SCENES
BEHIND THE SCENES





1. What inspired you to create "Jalebi," and what personal connections do you have to the story?

"Jalebi" is inspired by the complexities of family dynamics, particularly in the context of Indian culture, where personal desires often intersect with familial expectations. My own experiences growing up in a close-knit family and navigating the balance between individual aspirations and traditional values deeply influenced the narrative.

2. How does "Jalebi" explore the themes of cultural clashes and generational differences?

The film delves into the tension that arises when a young woman's modern, individualistic choices conflict with her family's traditional values. Each character represents a different generational perspective, allowing the audience to see how these differences shape the family's interactions and decisions.

3. Can you describe the significance of the film's title, "Jalebi"?

The title "Jalebi" is a metaphor for the twisted and complex relationships within the family. Just like the sweet, intricate coils of a jalebi, the story weaves through the tangled emotions and expectations that bind the family together, despite their differences.

4. How did you approach the visual style of the film, and what influenced your choices?

The visual style of "Jalebi" is intimate and immersive, with handheld camera work that mirrors the chaotic and emotional atmosphere of the family's world. I was inspired by the raw, dynamic cinematography seen in shows like "Succession" and "The Bear," which helped to create a sense of immediacy and connection with the characters.

5. What challenges did Anya face in balancing her career ambitions with her family's expectations, and how does this reflect broader societal issues?

Anya's struggle is a reflection of the broader societal challenge of balancing personal and professional aspirations with the expectations placed upon us by family and society. This is particularly relevant in cultures where family ties are deeply valued, and where stepping away from tradition can be seen as a betrayal.

6. How do the different family members in "Jalebi" represent various perspectives on love, duty, and tradition?

Each family member in "Jalebi" brings a unique perspective to the table. Anya's mother, Shallu, embodies traditional values and the sacrifices of a homemaker, while her brother Rudra represents rebellion against familial expectations. Their father, Kavi, is caught between maintaining family unity and understanding his children's modern desires. These contrasting views create the central conflict of the film.

7. What role does the setting—a traditional house in a posh neighborhood—play in the film's narrative?

The traditional house serves as a symbol of the family's deep-rooted values and their desire to maintain a certain social image. The spacious yet confined environment mirrors Anya's internal

8. How did the cast contribute to bringing the characters of "Jalebi" to life?

The cast brought incredible depth to their roles, each actor fully embodying the complexities of their character. Their ability to portray the subtle nuances of family dynamics—love, frustration, and unspoken tensions—added authenticity to the film. The chemistry between the actors made the family's interactions feel real and relatable.

9. What do you hope audiences take away from watching "Jalebi"?

I hope audiences come away with a deeper understanding of the challenges faced by individuals who are torn between their own happiness and the expectations of their family. "Jalebi" aims to resonate with anyone who has ever had to make difficult choices about their identity and relationships, offering a message of empathy and self-discovery.

10. Are there any plans to expand "Jalebi" into a longer format, such as a feature film or series?

There is certainly potential for "Jalebi" to be expanded into a longer format, as the themes of family, culture, and personal growth are rich with possibilities. I believe the characters and their stories could continue to evolve in a feature film or television series, allowing for a deeper exploration of the issues introduced in the short film.



Contact Us

Feel free to approach us if you have any questions.

Phone Number 747-203-9622

Email Address ayushi.usa@gmail.com

Website www.reallygreatsite.com

Fauget Interior

