

A SHORT FILM BY ANDRONACHE STUDIO PRODUCTION

WINNER
AUDIENCE
CHOICE
48 HOUR FILM PROJECT
MIAMI 2024
4



THE BOX

DIRECTED & PRODUCED BY ANGELA ANDRONACHE WRITTEN BY ANGELA ANDRONACHE & JOE MIGNONE DOP & CAM OP KEVIN ALVAREZ CORDOVA
EXECUTIVE PRODUCERS ANGELA ANDRONACHE & JOE MIGNONE GAFF/1st ASSISTANT CAM DANIEL L. MENDOZA ASSISTANT DIRECTOR TAMARA C MOORE WHITE 2ND ASSISTANT CAMERA MARILYN ROMANO
AUDIO RECORDIST KEVIN CACEIDO SOUND DESIGN ANGELA ANDRONACHE DRONE OP J. TYSUN JORDAN EDITOR ANGELA ANDRONACHE SCRIPT SUPERVISOR TAMARA C MOORE WHITE
POSTER DESIGN MANZOOR ILAHI PA MARILYN ROMANO BTS DANIEL L. MENDOZA | DARREN ANSELMO | J. TYSUN JORDAN

CAST Angela Andronache | Joe Mignone | James Ferrigno | Darren Anselmo | Barbara Ryan | Sharon Stephen | Lisa L. Martin | Dana Anderwald
APPEARS COURTESY OF Louise Bariso | Isabella Bobadilla ANIMAL ACTORS MAJIC & PRINCESS

A SHORT FILM

Psychological Thriller

(2024)



DIRECTED BY ANGELA ANDRONACHE



“THE BOX”

A GAME OF MADNESS. A seemingly sweet but dangerously unhinged woman lures her latest obsession into a twisted game of psychological manipulation, where love, madness, and murder blur together in a chilling dance that no one may survive. As dark secrets emerge, the question begs who is truly behind the sinister events unfolding in their once-peaceful neighborhood.



A[®]S

Andronache Studio Production & Angela Andronache © 2024 All Rights Reserved

FILM SYNOPSIS AND MESSAGE

“THE BOX” follows Emma, a seemingly sweet woman with a dark agenda. After discovering her husband Lee’s affairs, she plans to frame him for murder and eliminate his new lover, Laura. However, her plans unravel when her neighbor Rosey intervenes, leading to a deadly confrontation and exposing Emma’s true nature. The film delves into themes of trust and betrayal.

FILM HIGHLIGHTS



FILMMAKING CHOICES AND THEIR IMPACT

The film's visual and auditory choices play a significant role in enhancing its tension and psychological depth. The use of dim lighting and heavy shadows reflects the characters' hidden motivations and moral struggles, while close-ups and strategic camera angles emphasize shifts in power dynamics, particularly between Emma and other characters. Slow pacing in key moments heightens suspense, drawing the audience into Emma’s unraveling control, while sharp sounds and stretches of silence create a palpable sense of dread. The color palette mirrors Emma’s cold, calculated world, with splashes of color—like bright pink—symbolizing control and confidence, facade of power, masking the darker, manipulative actions she hides beneath. Handheld camera work during confrontational scenes adds to the feeling of chaos, putting the audience in the middle of Emma’s crumbling world. Together, these filming choices intensify the story’s themes of control, betrayal, and the inevitable consequences of manipulation, pulling the audience into the character’s struggle with trust and betrayal.



A[®]S

RELATABILITY AND IMPORTANCE

The film's relatability lies in its exploration of trust and betrayal, themes that resonate with almost everyone. The idea that we can never truly know or trust anyone, even those closest to us, taps into a deep-seated fear we all share. The film is important because it challenges the audience to question appearances and consider the hidden intentions behind people's actions. It highlights how vulnerability in relationships can lead to manipulation, reminding viewers that trust is both precious and dangerous. In an age where people often curate idealized versions of themselves, this film feels relevant by showing the contrast between what we see on the surface and the darkness that can lie beneath.



A[®]S



FILM HIGHLIGHTS



OVERALL FILM MESSAGE

"THE BOX" sends a strong message about trust, control, power, and self-preservation at the expense of morality and human connection will ultimately lead to downfall.

Emma embodies the idea that people can appear sweet and harmless on the surface, while secretly harboring darker intentions. The narrative warns that even those we trust the most, like spouses or neighbors, can betray us in the most unexpected ways. The film plays on the tension between appearances and reality, showing that trusting others can leave us vulnerable to manipulation, betrayal, and harm. It serves as a reminder to question the facade people present and to be cautious about who we allow into our lives.

No matter how carefully one manipulates others or tries to dominate circumstances, external forces like justice or fate will eventually intervene, exposing vulnerabilities and leading to inevitable consequences.





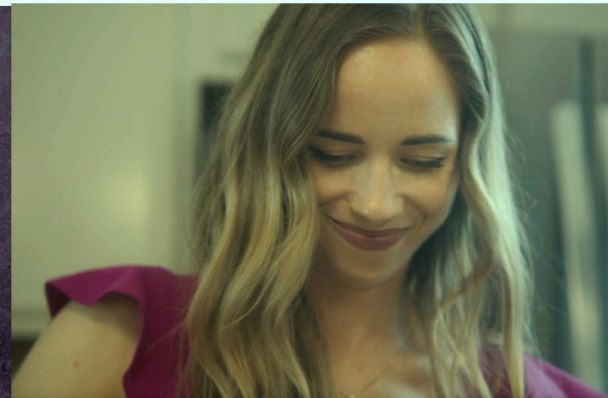
MOTIVATIONS

Emma's motivations are driven by a deep need for control, the preservation of the life she once had, and the emotional fallout from her husband Lee's betrayal. She loved Lee deeply, and his infidelity shattered her trust, leaving her unable to see her new reality as normal.

This loss of trust and love drives her to regain control of her life by any means necessary, even if it involves manipulating others and eliminating those who disrupt her sense of stability, like Laura. Her actions are fueled by a desire to restore order and power in her life, but they are also clouded by anger and a sense of betrayal, pushing her to increasingly extreme measures. Ultimately, Emma's motivation is to regain the control and security she lost when her trust in Lee was broken.

EMMA ASHFORD

Emma is a deeply complex character driven by a need for control, moral superiority, and self-preservation. While her actions are ruthless and cold, she isn't purely evil; beneath her calculated exterior, she believes she's doing what's necessary to protect her life from the chaos caused by others. She presents herself as intelligent, composed, and sophisticated, always maintaining a charming, organized facade.



EMMA'S INFLUENCE & MESSAGE TO THE WORLD

Emma's message to the world reflects the powerful and sometimes destructive nature of love, as well as the need for control that often accompanies it. Deeply in love with her husband, Emma found stability in that relationship, but when Lee's betrayal shattered her trust, she couldn't accept the new reality. Overwhelmed by anger, she sought to regain control in irrational and destructive ways.

The film illustrates how love, when intertwined with control, can spiral into madness when betrayed, turning nurturing emotions into dangerous obsessions. Emma's journey reveals that while control may seem powerful, external forces—people, fate, or justice—can disrupt even the most calculated plans.

Her framing of Lee and removal of Laura are her ways of punishing betrayal, showing how far people will go when they feel wronged.

Ultimately, Emma's extreme response underscores the cost of living without forgiveness or emotional resilience.



WHO'S EMMA?

Emma plays the perfect wife and daughter with ease, rarely showing emotion, which adds to her cold and methodical appearance. Internally, she's driven by a fear of losing control, trust issues, and anger rooted in her deep love for Lee. Emma is not motivated by jealousy or revenge but by a pragmatic need for order, viewing people as either assets or obstacles, making morally questionable decisions that she justifies as necessary to maintain stability.

BACKSTORY

Emma grew up in a household where control and appearances were everything. Her father, Frank, was emotionally detached but highly manipulative, teaching Emma that vulnerability was a weakness. She learned early on to suppress her emotions and rely on calculated decisions to get what she wanted. As an adult, Emma has mirrored these traits, becoming a master at maintaining control over her surroundings and relationships. Her marriage to Lee initially provided the love & structure she sought, but his betrayal with Laura and other women shattered her sense of order. Now, Emma is driven by a need to eliminate any threats to her carefully crafted life, believing that control is the only way to protect herself from chaos. Her relationship with Frank remains a reflection of her upbringing, where loyalty is rooted in mutual benefit rather than love.

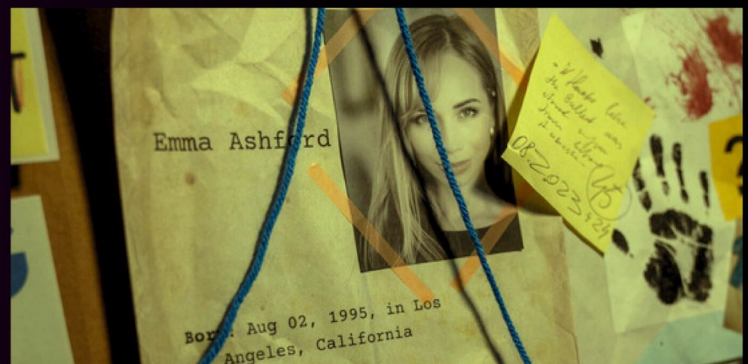
RELATIONSHIPS

Emma's relationships with other characters are defined by love, betrayal, and control. Her relationship with Lee, her husband, began with deep love but unraveled after his infidelity, leading her to manipulate and frame him out of a need for control and revenge. With her father, Frank, Emma shares a bond based on complicity rather than warmth, as he enables her actions without question. Laura, Lee's affair partner, is seen by Emma as an obstacle to be eliminated, not out of jealousy but as a threat to her sense of stability. Finally, her neighbor Rosey, initially a passive observer, becomes the force Emma cannot control, disrupting her plans by eliminating Frank and ultimately confronting her, symbolizing the external justice Emma never expected.



CHARACTER ARC

Emma's character arc begins as a seemingly sweet and composed woman who deeply loves her husband, but after discovering his betrayal, she descends into madness. Her desire for love and control becomes twisted as she tries to regain stability in her life by plotting to eliminate those who disrupted her sense of normalcy. As her mind becomes clouded by anger and a need for vengeance, she manipulates those around her, believing she can restore control. However, as her plans unravel, Emma's vulnerability is exposed, culminating in her final loss of control, where she is left powerless and confronted by forces she could no longer manipulate.



MOTIVATIONS

Lee's motivations are primarily driven by self-preservation and a desire to maintain his comfortable lifestyle while avoiding confrontation. His affairs with Laura, and other women likely stems from dissatisfaction in his relationship with Emma, seeking fulfillment outside of their marriage. However, Lee isn't ready to fully face the consequences of his actions and is motivated to hide the affair to avoid disrupting his life further.

His actions reflect a mix of carelessness and a lack of awareness of the deeper emotional damage he's caused to Emma. As Emma's plan to frame him unfolds, Lee's primary goal shifts to protecting himself from the consequences of her manipulations, desperately trying to escape the fallout of his infidelity.

LEE SANTOS

Lee is Emma's husband and the source of her emotional turmoil. Initially, Emma deeply loved him, but Lee betrayed her by having an affair with Laura and possibly other women. His infidelity shattered Emma's trust, triggering her descent into a state of anger and obsession with regaining control over her life. Though not inherently malicious, Lee's carelessness and lack of awareness of the depth of Emma's feelings contribute to the unraveling of their relationship. He becomes a key figure in Emma's plot as she frames him for murder, making him both a victim of her manipulation and the catalyst for her dark transformation.

LEE'S INFLUENCE & MESSAGE TO THE WORLD

Lee's character sends a message about the consequences of carelessness and emotional negligence in relationships.

His lack of awareness and disregard for the emotional impact of his actions lead to disastrous consequences not only for himself but for everyone around him.

From Lee, we learn that ignoring the emotional needs of others and failing to take responsibility for one's actions can lead to deeper, uncontrollable fallout. His carelessness serves as a cautionary tale about how seemingly small betrayals, like infidelity, can spiral into much larger, irreversible damage when left unaddressed.

Lee's story reminds us that emotional neglect and self-serving behavior come at a cost, often hurting not just the person wronged but everyone involved.

A[®]S

MOTIVATIONS

Frank is motivated by a deep-seated need for control and stability, believing that maintaining power and order justifies any actions, even immoral ones.

His loyalty to Emma stems from a desire to protect their way of life, shaped by a worldview that values survival and dominance over emotional connection or ethical boundaries.

In his mind, enabling Emma ensures their continued control and preserves the structured life he believes they both need.

FRANK BISSON

“The Accomplice” Frank, Emma’s father, is her accomplice in the murders. He follows Emma’s lead without question, acting as her enabler. Cold, detached, and methodical, Frank shares Emma’s lack of emotional attachment, acting out of loyalty to her rather than personal morality. Frank’s motivations align with Emma’s—maintaining control and order. He assists her, perhaps out of a sense of duty or shared values.

Frank is loyal to Emma, acting as her silent partner in crime. Their relationship is one of mutual understanding, with Frank playing a supporting role in her plans.



FRANK’S INFLUENCE & MESSAGE TO THE WORLD

Through Frank’s character, we learn the dangers of blind loyalty and complicity in wrongdoing.

His focus on control and enabling Emma’s actions shows how ignoring morality for the sake of power leads to downfall.

Frank was portrayed this way to highlight how even passive enablers are responsible for the harm they allow, ultimately facing consequences for their moral compromises.



Rosey's involvement goes beyond simple curiosity—she's emotionally invested in the case, collecting evidence and following suspects closely, which culminates in her eventual confrontation with Emma.

MOTIVATIONS

Rosey's motivations stem from her obsession with solving the missing women crimes that have plagued her community. Constantly following the news and investigating on her own, she views herself as a neighborhood detective, driven by a need for justice and the truth.

Her noisy and nosy behavior is fueled by her desire to uncover what others might overlook, and her dedication to the case reflects a personal mission to protect her community.

Her actions are motivated by a deep-seated need to bring closure to the crimes, seeing herself as the one who can solve what the authorities cannot.

ROSEY CLARK

Rosey is Emma's observant neighbor in "The Box." Initially, she appears to be a curious bystander obsessed by the news and crimes in her area. However, by the film's climax, Rosey becomes a key player in disrupting Emma's plans. After her interaction with Frank, she confronts Emma, ultimately holding her accountable for her actions. Rosey's character represents an external force of justice, someone Emma cannot manipulate or control. Her intervention at the end of the film shifts the power dynamic, as Rosey exposes Emma's vulnerability and brings her schemes to an abrupt halt.

ROSEY'S INFLUENCE & MESSAGE TO THE WORLD

Rosey's message is about the power of vigilance and standing up for justice, even when no one else seems to be paying attention. She represents the idea that ordinary people can make a difference by staying informed, engaged, and unafraid to act when something is wrong.

Rosey's obsessive investigation into the missing women shows that sometimes, it's the seemingly insignificant or eccentric individuals who are the most dedicated to uncovering the truth. Her character highlights the importance of not turning a blind eye to injustice and emphasizes that, in the face of wrongdoing, we all have a role to play in seeking accountability, even if that means stepping up when others won't.



MOTIVATIONS

Laura's motivations are rooted in seeking personal connection and fulfillment outside of her own life, which led her to engage in an affair with Lee. She may have been motivated by emotional or physical attraction, without fully considering the consequences of her actions or the impact it would have on Emma and Lee's marriage.

Laura's character seems to be driven by her immediate desires, unaware of the danger and complexity that her involvement with Lee would bring. Her motivations are not rooted in malice, but rather in carelessness and a lack of foresight regarding the potential fallout of her actions.

LAURA ANDERSON

Laura is Lee's affair partner in *"The Box."* She becomes the target of Emma's rage after breaking the trust in Emma and Lee's marriage. Although she is not directly malicious, her involvement with Lee triggers the chain of events that leads to Emma's dark and manipulative actions. Laura is largely unaware of the dangerous consequences her affair will have, making her a key figure in Emma's quest to regain control over her life by eliminating threats to her stability. Ultimately, Laura represents the external force that disrupts Emma's carefully constructed world.

LAURA'S INFLUENCE & MESSAGE TO THE WORLD

Laura's character sends a message about the unintended consequences of carelessness and infidelity.

Though she may not have acted with malicious intent, her affair with Lee shows how even seemingly small, personal decisions can have far-reaching and destructive effects on others.

From Laura, we learn that actions taken without considering their broader consequences—especially when trust is involved—can set off a chain reaction of harm.

Her story serves as a reminder that engaging in dishonesty or betrayal, even when it feels justified in the moment, can lead to unexpected and dangerous outcomes for everyone involved.





POLICE OFFICERS

In *"The Box,"* the police officers are Officer Sparks, a male in his 40s, and Officer Jackson, a female in her late 30s. They are part of the ongoing investigation into the missing women and play a role in the climax when they arrive to confront Lee. Their presence adds tension to the film, as they represent the authority that seeks to bring order and justice amidst the chaos caused by Emma's manipulations. Their characters also emphasize the external forces of law enforcement trying to solve the crimes, unaware of the deeper, more personal betrayal at play within Emma's world.



A'S

Andronache Studio Production & Angela Andronache © 2024 All Rights Reserved

**CAST: DARREN ANSELMO &
SHARON STEPHEN**

SAMANTHA'S MESSAGE

Samantha Blake's message to the world, as the news anchor, underscores the importance of awareness and the role of media in informing and engaging the public. Her character highlights how information, when delivered through news, shapes public perception and adds urgency to societal issues like the missing women in the story.

Samantha's broadcasts serve as a reminder that media can both raise awareness of dangers and play a pivotal role in solving crimes. Her presence reflects the power and responsibility of journalism in keeping the public informed, vigilant, and involved in community safety.



SAMANTHA BLAKE

Samantha Blake is the news anchor in "The Box." She serves as a key expositor, delivering the latest updates on the missing women case and setting the tone for the rising tension in the community. Through her broadcasts, Samantha connects the outside world to the intimate and dangerous dynamics unfolding within Emma's life, giving the audience critical context about the ongoing investigation and the broader implications of the crimes. Her role is essential in heightening the suspense and establishing the sense of urgency that surrounds the disappearances.



intensify search for the new victim and are working around the clock bu



Andronache Studio Production & Angela Andronache © 2024 All Rights Reserved

CAST: BARBARA RYAN



SAMANTHA BLAKE HEADLINES

Authorities investigate a possible connection between recent disappearances. Law enforcement issues safety tips amid growing a breakthrough in the search





DIRECTOR'S BIOGRAPHY

“Good stories take us by surprise. They make us think and have unique feelings. They remain in our memory for years to come, they help us remember ideas and concepts in a way that nothing else can.”

CONTACT



www.AndronacheStudio.com



info@AndronacheStudio.com



[@Angela.Andronache](https://www.facebook.com/AndronacheStudio)



[@Angela.Andronache](https://www.instagram.com/AndronacheStudio)

A[®]S

Miami | Palm Beach FL, USA

ANGELA ANDRONACHE

Angela has a diverse educational background, having studied IT & Economics, Marketing, Fine Arts, Acting, Videography, and Photography. She holds a Bachelor's degree in Law and a Master's in Criminal Justice. Angela began her career as a Finance Negotiator for a company in the Netherlands before moving to the United States where she started a career in real estate acquisitions.

Her passion for filmmaking stems from a deep desire to tell unique stories. She believes that strong emotions are powerful enough to convey compelling narratives.

Growing up in a small town, Angela faced challenges that shaped her perspective, making her both intuitive and detail-oriented. Her extensive acting training, under various esteemed coaches, has given her insight into the actor's craft, enabling her to direct with empathy and precision.

She has a natural talent for understanding lighting, set design, and authentic performances, which she brings to life through careful analysis and attention. Born and raised in the Republic of Moldova, Angela is the daughter of an engineer father and a mother who was a professor of French and Russian. This background provided a strong foundation for her achievements.

Beyond her professional life, Angela is committed to a healthy vegan lifestyle and enjoys yoga, meditation, biking, watching documentaries, listening to podcasts, painting, and filming. She also loves spending time with her entertaining parrots. Enthusiastic about the ocean, Angela enjoys surfing, paddle-boarding, snorkeling, free-diving, jet-skiing, boating, swimming, or simply spending a quiet day at the beach reading her favorite personal development books.

CREDITS

DIRECTED & PRODUCED BY **ANGELA ANDRONACHE**

WRITTEN BY **ANGELA ANDRONACHE & JOE MIGNONE**

DOP & CAM OP - **KEVIN ALVAREZ CORDOVA**

EXECUTIVE PRODUCERS - **ANGELA ANDRONACHE & JOE MIGNONE**

CASTING DIRECTOR: **ANGELA ANDRONACHE**

PRODUCTION COORDINATOR & MANAGER: **ANGELA ANDRONACHE**

GAFF - **DANIEL LUACES MENDOZA**

ASSISTANT DIRECTOR - **TAMARA C MOORE-WHITE**

1ST. ASSISTANT CAMERA - **DANIEL LUACES MENDOZA**

2nd. ASSISTANT CAMERA - **MARILYN ROMANO**

AUDIO RECORDIST & BOOM OP - **KEVIN CACEIDO**

DRONE OP - **J. TYSUN JORDAN**

POSTER DESIGN - **MANZOOR ILAHI**

EDITOR - **ANGELA ANDRONACHE**

SOUND DESIGN & SOUND EDITOR - **ANGELA ANDRONACHE**

BTS - **DARREN ANSELMO, TYSUN J. JORDAN & DANIEL LUACES**

SCRIPT SUPERVISOR - **TAMARA C MOORE-WHITE**

PA - **MARILYN ROMANO**

CAST

Angela Andronache | Joe Mignone | James Ferrigno | Darren Anselmo | Barbara Ryan | Sharon Stephen | Lisa L. Martin | Dana Anderwald

APPEARS COURTESY OF:

Louise Bariso

Isabella Bobadilla

Animal Actors: MAJIC & PRINCESS



"To the cast & crew: I am honored to have shared this experience with you. Your talents truly shined! Love you guys!"
(Joe Mignone)

FILM



JOE MIGNONE



SCREENWRITERS



ANGELA ANDRONACHE

I had the pleasure of experiencing what it takes to assemble a team, collaborate on various aspects, and bring a project to completion. It was definitely a challenge, especially since we made this film in just 48 hours. I learned so much—from selecting the right crew and casting the roles, to making tough decisions in the editing process about what to keep and what to cut. Overall, it was an incredible experience!

(Angela Andronache)



BECOME A SPONSOR

This short film was made on a very low budget and would mean the world if you could help bring it in front of more people, and help make more movies like this.

SPONSOR'S BENEFITS

Brand Exposure

Logo Placement:

Including your logo in the film credits (for new films), posters, trailers, and other promotional materials.

Product Placement:

Featuring your products or services within the film.

Mentions in Publicity:

Mentioning you in press releases, social media posts, and interviews.

Exclusive Access

Premiere Invitations:

Offering VIP tickets to the film premiere or exclusive screening events.

Behind-the-Scenes Access:

Providing access to the set, allowing the sponsor to meet the cast and crew and see the filmmaking process up close.

Marketing Opportunities

Co-Branded Content:

Creating co-branded promotional content that features both the film and your brand.

Cross-Promotion:

Collaborate on marketing campaigns that promote both the film and the sponsor's products/services.

Networking Opportunities

Industry Connections:

Introduce you to key industry professionals, including other filmmakers, actors, and producers.

Event Participation:

Invite you to participate in film festivals, industry panels, and other events where they can network and promote their brand.



Tax Benefits

Tax Deduction:

If the sponsorship is considered a charitable donation, you may be eligible for tax deductions (consult with a tax professional for specifics).

Audience Engagement

Engagement Campaigns:

Creating campaigns that engage the film's audience with the your brand, such as contests or giveaways.

Interactive Content:

Developing interactive content like behind-the-scenes videos, interviews, and making-of documentaries that feature you as the sponsor.

Recognition & Acknowledgment

Special Thanks: Including a "special thanks" section in the film credits. (for new films)

Awards and Nominations: If the film receives awards or nominations, the sponsor can be acknowledged in acceptance speeches and related publicity.

Merchandising Opportunities

Branded Merchandise:

Developing film-related merchandise that includes the sponsor's branding.

Exclusive Offers:

Offering special promotions or discounts on the sponsor's products/services to the film's audience.

** SPONSOR BENEFITS DEPEND ON THE LEVEL OF SPONSORSHIP

Amateur

donations of \$100 and up

Silver

donations of \$500 and up

Bronze

donations of \$1,000 and up

Gold

donations of \$5,000 and up

** Contact for details on each level if interesting in becoming a sponsor.

info@AndronacheStudio.com

YOU CAN HELP EXPAND THE STORY INTO A FEATURE FILM OR TV SERIES. USE THE METHODS BELOW TO DONATE AND SUPPORT.



Cash App



Zelle



Venmo



Paypal



SPECIAL

Thank
YOU

WEBSITE
ANDRONACHESTUDIO.COM

INSTAGRAM
@ANDRONACHE_STUDIO

TWITTER
@ANDRONACHE_STUDIO

FACEBOOK
ANDRONACHE_STUDIO

ANDRONACHE® STUDIO



VISUAL STORYTELLER THROUGH
THE POWER OF IMAGE

