

A woman with reddish-brown hair tied up, wearing a blue sleeveless top and jeans, is lying on her stomach on a light-colored wooden floor. She is looking down with a sad or contemplative expression. The room is dimly lit, with a warm, golden light source from the right, possibly a window, casting long shadows and highlighting the texture of the floor and her hair. The background shows a white door frame and a wooden chair leg.

It's Probably Not John

A CLINT CLARKSON AND LL CHRISTENSEN PRODUCTION PRESENTS "IT'S PROBABLY NOT JOHN" STARRING BRYN BOOTH
DIRECTED BY LL CHRISTENSEN CINEMATOGRAPHY BY CLINT CLARKSON STORY BY LL CHRISTENSEN MUSIC BY CAPE AND CHRISTOPHER GALOVAN
SCREENPLAY BY LL CHRISTENSEN AND CLINT CLARKSON EDITED BY CLINT CLARKSON @LLCHRISTENSEN @CLINTCLARKSONDP WWW.BRYNBOOTH.COM

It's probably not John

Running Time:

8.29 minutes

Directed By:

Louise Lohmann Christensen

Written By:

LL Christensen & Clint Clarkson

Produced By:

LL Christensen & Clint Clarkson

Production Company:

Clint Clarksons Films

Edited by:

Clint Clarkson

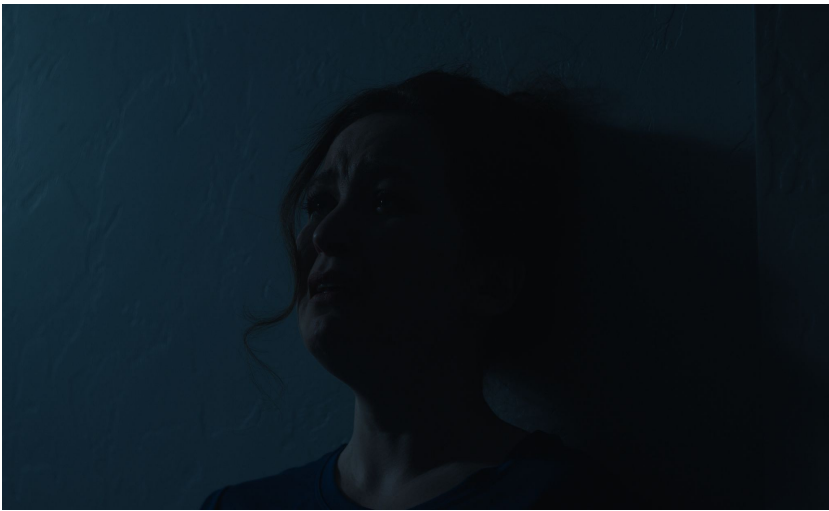
Cinematographer:

Clint Clarkson

Composer:

Cape & Christopher Galovan

Music licensed through Audiio





LOGLINE

When John suddenly dies, Laura disappears into a depression. Until one day, a tiny creature brings her back from the dark.

SYNOPSIS

In a grief circle, Laura shares her recent journey of losing John. How she sleeps on the floor, can't keep her job, how friends disappear and how time spitefully continues to pass, though she wants it to stop. She shares how one day; she has a pivotal moment that brings her back from the darkness and restores her ability to live again.



Writer/Director/Producer LL Christensen

Louise Lohmann Christensen is a Danish multi artist (based in the US) also known as Kendra Lou in the music industry. She has part-taken in several music collaborations, released solo albums & performed on national stages in Denmark, UK and the US. Louise is also a trained actor from Esper Studio in NYC and has worked with Scandinavian American Theater Company (NYC), Strada Company (AZ) and Aarhus Theatre (Denmark) plus many other companies & projects. Louise transitioned from theater to the film media in 2022 as a writer, director & producer. She has written, directed & produced three short films (one in Post) as well as co-directed the indie feature “A question of guilt” that is premiering in 2024. She is inspired by symbolism, nature & the questions of humanity.

www.instagram.com/ll.christensen



Writer/Cinematographer/Producer Clint Clarkson

Clint Clarkson has years of experience in filmmaking and audio engineering. He began his career with formal training at the Conservatory of Recording Arts and Sciences. Over the years, he has transitioned into roles as a cinematographer and/or director on several filmmaking endeavors that he has written/co-written. His credits include one full-length feature film, *The Dog Bite Murders*, set to premiere in late 2024, along with two short films. He has also filmed several music videos for songs written by gold and platinum award-winning songwriters. Clint is well-rounded, taking on the responsibilities of producing, editing, sound mixing, and color grading in his films.

www.instagram.com/clintclarksondp

Lead Actress, Bryn Booth

Bryn Booth is a Tucson-based professional actor. She is a graduate of the BFA Acting program from the University of Arizona and is now a member of the resident acting ensemble of the Rogue Theatre, where she has built her resume with powerful and versatile roles including Viola in *Twelfth Night*, Ruth in *Blithe Spirit*, Abigail in *The Crucible*, and many more.

Bryn has also worked with Scoundrel and Scamp Theatre, where she was given the honor of starring in their premier show as Gowdie in *The Love Talker*. She also played Mag in their production of *Lovers* for which she was nominated for a MAC Award.

In 2022, she starred in the film *8,000 Feet Up* which won "Best of Arizona." at Arizona International Film Festival. Since then, she's acted in several independent films including *10 Feet Down* (a prequel to *8,000 Feet Up*), *The Dog Bite Murders* (a feature by Clint Clarkson), and this past summer she starred in a production of her first ever screenplay, *A Night to Remember*.

It's Probably Not John is one of the most meaningful pieces she's ever worked on. She is so thankful to writer/director Louise Lohmann Christensen and writer/cinematographer Clint Clarkson to trust her with such a profound work of art.

Bryn would like to dedicate her work in this film to her niece Emily Jean who tragically passed away in November of 2023. *Emily will always be Bryn's ladybug*. You can find more info on Bryn at www.brynbooth.com.



Directors statement

Grief is one of those human experiences that we cannot avoid, though we try to because it is so darn uncomfortable. In this film we are exploring what it means to not only lose someone you love, but your feeling of Self as well. How life loses its meaning, and how the smallest thing may help you find your way back. In some ways, you can call this film a love letter to grief.



A word on collaboration & inspiration from the director.

In early 2023, I was looking for a partner to make a short film and found Clint's work online. I was immediately blown away by his still-frames and knew I wanted to work with him. Lucky for me, he liked my writing a lot and very quickly we decided to take a monologue that I had written and flush it out to work as a film. The inspiration for the monologue itself is based my own experience with grief as well as a story I heard, about a woman who awakened from a heavy depression in one pivotal moment.

Clint & I work effectively together. Though we have very different backgrounds, we seem to gravitate towards the same kind of imagery & storytelling. So shooting the film was immensely satisfying.

On account of Bryn; I saw her acting reel in the spring of 2023, and a clip of an unhinged furious character, informed me that she could go to the places for the performance I wanted. She was easy and lovely to work with and brought real truth to the character. I am very proud of this little film we made.

Therapy Group members; Melanie Groves & Courtney Harmon - upper left.

Therapy Group members; Kelli Taylor & Cory Hawkins - lower left.





PRAISE

"An impeccably crafted film. Beautifully shot and acted, this film is both tender and thought provoking. One of the best short films I've seen in some time."

Alan Williams, Writer/Director/Producer - 8000 FT Up, 10 FT Down

"This film is damn good "

Tom Meredith, Director of Photography, AFI

"I loved this short. LL Christensen is a very strong filmmaker with a powerful cinematic voice. Written with a poetic existentialism that is accessible and equally hypnotic, LL draws us into life's transformative struggles. I can't wait to see what she creates next"

John Dapolito, CEO AWG, Mentor/Actor/Playwright/Producer

CAST

Laura

Tom (Voice)

Therapy Circle Member 1

Therapy Circle Member 2

Therapy Circle Member 3

Therapy Circle Member 4

Therapy Circle Member 5

Therapy Circle Member 6

Concerned Friend 1

Concerned Friend 2

Bryn Booth

Adam Chen

Adam Chen

Courtney Harmon

Corbyn Mooney

Kelli Taylor

Cory Hawkins

Melanie Groves

V Waer

Lily Porrazzo



Therapy circle from left to right: Melanie Groves, Adam Chen, Bryn Booth, Corbyn Mooney & Cory Hawkins

CREDITS

Directed by

Written by

Produced by

Music by

Director of Photography

Boom operator/on set sound mixer

Script & Continuity

Production Manager

Production assistants

G & E

Art Director

Casting

Editor

Colorist

ADR/Foley Artist/sound editor

EPK

Louise Lohmann

Christensen

LL Christensen

Clint Clarkson

LL Christensen

Clint Clarkson

Cape

Christopher Galovan

Music licensed through Audiio

Clint Clarkson

Darren Barton

Lily Porrazzo

LL Christensen

Melanie Groves

V Waer

Gino Mauceli

Clint Clarkson

Clint Clarkson

LL Christensen

Clint Clarkson

Clint Clarkson

Clint Clarkson

LL Christensen

