

“IMPRESSIVE FEAR-FARE. CHILLING MYSTERY.
AFICIONADOS OF INDEPENDENT HORROR CINEMA SHOULD
FIND PLENTY TO INTRIGUE THEM.”

- JOSEPH PERRY, HORROR FUEL



MELTDOWN

A NUCLEAR FAMILY'S ASCENSION INTO MADNESS

CLLOUDSTAR PICTURES PRODUCTION IN ASSOCIATION WITH VINJER PRODUCTIONS & ONYX FILMS "THIS IS HOW IT STARTS" HANNAH BECK MALEAH GOLDBERG WILLIAM ELSMAN AND FINN ROBERTS
ERIC HANSON CELENA VITTORIO JOSHUA WEATHERBY DAVID WENDELL BOYKINS ERNEST EMMANUEL PEEPLES GRANT EDWARDS
CASTING BY BRIT FRANKIE PRODUCTION DESIGNER ANNIE BECKER DIRECTOR OF PHOTOGRAPHY THOMAS GEORGE EDITOR JAMAL GREEN EXECUTIVE PRODUCERS ALEC FARMER COLTON VAN TIL WRITTEN BY COLTON VAN TIL ASHLEY TROPEA SOPHIA HOEFLE
PRODUCED BY ISAAC BEDFORD EXECUTIVE PRODUCERS LYNDA DE LA VINA MALEAH GOLDBERG PRODUCED BY COLTON VAN TIL, P.G.A. SOPHIA HOEFLE, P.G.A. JORDAN PFEIFER THOMAS GEORGE DIRECTED BY COLTON VAN TIL

vinjer

★ CLOUDSTAR PICTURES

ONYX



MELTDOWN

A NUCLEAR FAMILY'S ASCENSION INTO MADNESS



a film by
COLTON VAN TIL

CLOUDSTAR PICTURES presents a VINJER PRODUCTIONS & ONYX FILMS production COLTON VAN TIL's "MELTDOWN: A NUCLEAR FAMILY'S ASCENSION INTO MADNESS" featuring HANNAH BECK, MALEAH GOLDBERG, WILLIAM ELSMAN, FINN ROBERTS, CHRIS HANSON, CELINA VITTORIO, HOSHIA WEATHERY, DAVID WENDELL, BOYKINS FENESI, EMANUEL PEEPLES, BOB FRANK, ANNE BECKER, THOMAS GEORGE, JAMAL GREEN, ALEC FARMER, COLTON VAN TIL, COLTON VAN TIL, ASHLEY TROPEA, SOPHIA HOEFLE, ISAAC REDFORD, LINDA DE LA VINA, MALEAH GOLDBERG, COLTON VAN TIL, SOPHIA HOEFLE, JORDAN PFEIFER, THOMAS GEORGE, COLTON VAN TIL



QUICK FACTS

GENRE: ACID-HORROR **RUNNING TIME: 84 min**

DIRECTED BY:

COLTON VAN TIL

WRITTEN BY:

COLTON VAN TIL, ASHLEY TROPEA, SOPHIA HOEFLE

PRODUCED BY:

COLTON VAN TIL, p.g.a. SOPHIA HOEFLE, p.g.a.
JORDAN PFEIFER, THOMAS GEORGE

PRODUCTION COMPANY:

CLOUDSTAR PICTURES

IN ASSOCIATION WITH:

VINJER ENTERTAINMENT, ONYX FILMS

CINEMATOGRAPHER:

THOMAS GEORGE

COMPOSER:

JAMAL GREEN

EDITED BY:

ALEC FARMER, COLTON VAN TIL

LOGLINE

A seemingly flawless 1950s nuclear family hosts an important dinner party, but when an unexpected LSD spiking alters the course of the evening, secrets resurface, shattering their facades and forcing them to confront their darkest fears.

SYNOPSIS

Three years ago, the Richards' world shattered when their youngest son vanished without a trace. In the seemingly idyllic 1950s suburb where they now feign normalcy, the family begins to crack. As Ruby hosts a pivotal dinner for her husband's mayoral campaign, the night takes a mind-bending turn. Drinks are spiked, plunging everyone into a surreal acid trip that unravels the carefully constructed facade. Amidst the nightmarish chaos, the shocking truth about the missing son emerges, turning a seemingly ordinary evening into a heart-pounding revelation of secrets and horrors.



WHAT CRITICS ARE SAYING

“Impressive fear-fare. Chilling mystery. Aficionados of independent horror cinema should find plenty to intrigue them.”

- Joseph Perry, HORROR FUEL

“A carefully crafted thriller, with a sure hand by director Colton Van Til.”

- Steve Kopian, UNSEEN FILMS

“Meltdown does an excellent job at slowly turning up the heat on its characters. Director Colton Van Til builds simmering tensions early in the story that reach a boiling point. This psychedelic horror showcase should rise up your watchlist.”

- Alan French, SUNSHINE STATE CINEPLEX

FESTIVALS

Fantaspoa International Fantastic Film Festival
Brazil, April 2023, World Premiere

Macabro Festival Internacional de Cine de Horror
Mexico, August 2023, NA Premiere

Fright Night Film Fest
Louisville, November 2023, US Premiere

NewFilmmakers LA
Los Angeles, March 2024, West Coast Premiere



STILLS



DIRECTOR'S STATEMENT

I grew up hearing stories of my grandmother serving in the Women's Auxiliary Australian Air Force during WWII. I've always been fascinated by how jarring it must have been for her to return home. She held a position with a great deal of technical responsibility and oversight during the war, only to return to a society that hardly allowed her to be anything more than a housewife. This domestic tension, and the look in my grandma's eyes as she talked about her time overseas, fueled the inception of this film. I knew I had to dig into what lay in between the lines of her stories, the emotions she boxed up and never shared with a soul before she passed away. So I looked to Gilman's *The Yellow Wallpaper* and Ibsen's *A Doll's House* to inform the internal struggles of Ruby.

Whenever my grandparents visited, they would play classic 40s and 50s films. Through the repetition of seeing the same films, I began to see subtle breaks in the perfect Hollywood facade. I'm continually fascinated by the films of Douglas Sirk; an ocean of social commentary and brilliant irony lay underneath his seemingly simplistic yet luscious, romantic melodramas.

Gaspar Noé and other directors in the New French Extremity showed me how jamming the frame full of madness and chaos can create a revelatory psychosis. I became obsessed with psychedelic horror's ability to externalize the repressed, and this is where this film's stylistic idea was born. What would happen if I combined the suffocating setting and repressed characters of a typical 1950s suburban film with the liberating power of the French Extremity? While tonally, the work of Noé and Sirk seem drastically different, I felt that they were two sides of the same coin, both using excess to subvert and comment on the status quo.

So, at its core, *Meltdown* captures the unique experience of experimental horror, but with the foundation of a traditional narrative structure that mainstream audiences are familiar with. My goal is for this film to be someone's jumping-off point into far more extreme genre films.

CAST



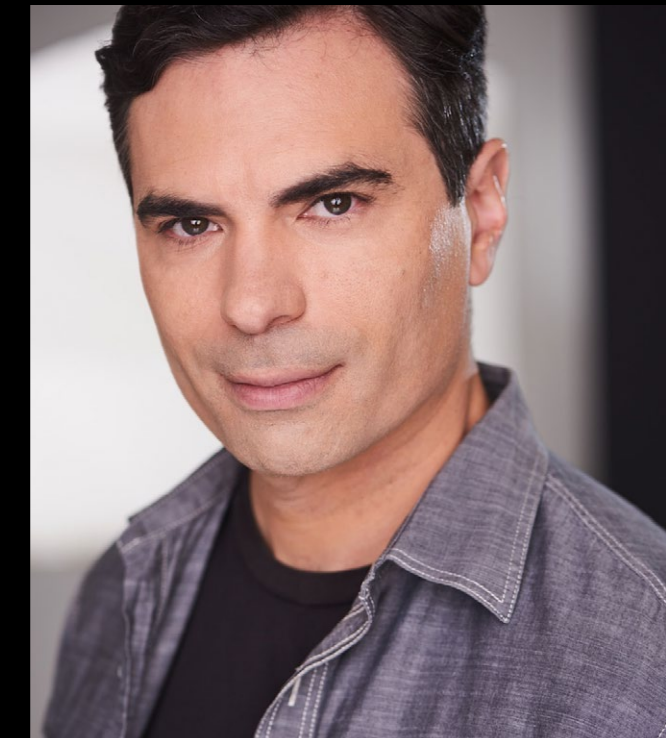
HANNAH BECK

Based in New York, Hannah Beck's work has spanned through film, TV, and theater. Her performance in "Through Open Doors" earned her a Best Actress nomination by the NYIFA. She was also nominated for Best Actress by the TheaterMaker Awards for her appearance in *Til There Was You*.



MALEAH GOLDBERG

Maleah is an LA-based actress known for her recurring roles in HBO's "HACKS" and Netflix's "ON MY BLOCK". After meeting Van Til in film school, this is the duo's third collaboration together.



WILLIAM ELSMAN

Born in Holmdel New Jersey, he received his Bachelor of Fine Arts degree in Theater from Rutgers University. As part of his training, he performed at the Edinburgh Fringe Festival and studied abroad at the London Academy of Theater.



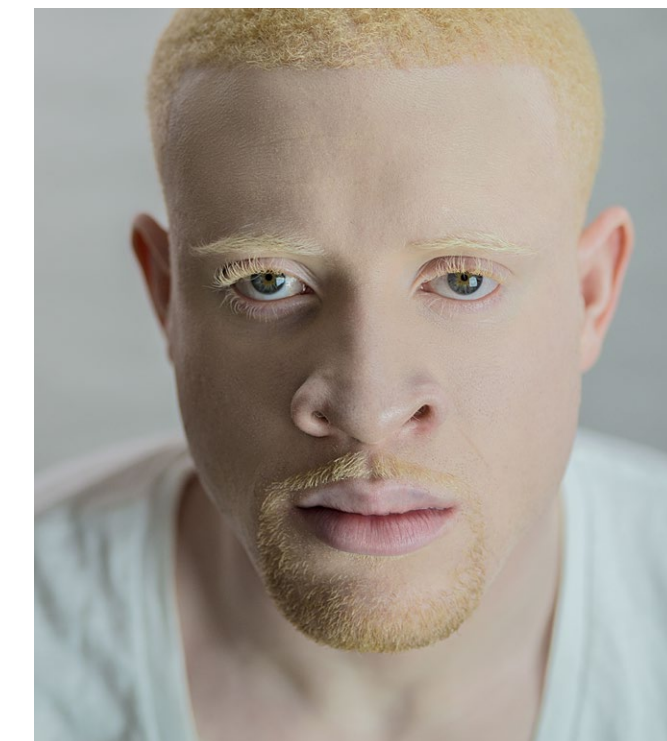
DAVID WENDELL BOYKINS

Boykins' background is in the camera department and directing - where he's worked for the last two decades. He channeled this knowledge for his poise in front of the camera.



FINN ROBERTS

Finn Roberts is an LA-based actor known for his role in A24's "20th CENTURY WOMEN" and the leading role in Netflix's "GREENHOUSE ACADEMY".



ERNEST EMMANUEL PEEPLES

Peeples is known for his breakout role in A24's "ZOLA". He graduated from Morehouse College with a B.A. in English Literature - which came in handy when he drew from several classic novels for his character.



DIRECTOR COLTON VAN TIL

Colton is a writer/director known for his debut feature *Aberdeen* (2019) and his sophomore feature *Meltdown: A Nuclear Family's Ascension into Madness* (2023). His work often centers around examining the nuances of family and generational trauma. He was born and raised outside of Seattle, Washington and now lives and works in Los Angeles. He graduated from The School of Film and TV at Loyola Marymount University.

KEY CREW

PRODUCER

SOPHIA
HOEFLE, p.g.a

Sophia grew up in San Antonio, Texas, and now lives in Los Angeles, where she works as an Independent Producer. In 2018 she co-founded Cloudstar Pictures LLC and produced their first feature (Aberdeen) for only \$13,000 - which received international streaming and limited theatrical distribution.



EXECUTIVE PRODUCER

LYNDA
DE LA VIÑA

Dr. de la Viña was named one of the 100 Most Influential Hispanics by Hispanic Business Magazine. She was the first Mexican-American woman at the secretarial level of the U.S. Treasury as Deputy Assistant Secretary for Economic Policy (1998-2001). A decade ago she founded Vinjer Ent., this is her second collaboration with Cloudstar Pictures.



PRODUCER

JORDAN
PFEIFER

Jordan Pfeifer is the founder of Onyx Films. She recently graduated from Loyola Marymount University with an emphasis in directing. She is a lover of women and believes that the power amongst a group of females is unmatched. She's worked for Blumhouse, Ghost House Pictures, and Raimi Productions. Jordan's dream has always been to assemble a group of strong, creative women to make empowering, inspiring, and visceral art.



CO-SCREENWRITER

ASHLEY
TROPEA

Ashley wrote her first story when she was 11 years old and hasn't been able to stop since. She received her BA in Screenwriting at Loyola Marymount University. Her peers and professors selected her for the Industry Award for Best Undergrad Pilot for "Counterfeit." "Counterfeit" was also a Finalist in Coverfly's Pitch Week Spring 2022.



BTS STILLS



MELTDOWN

A NUCLEAR FAMILY'S ASCENSION INTO MADNESS

CONTACT

Colton Van Til
colton@cloudstarpictures.com

Jordan Pfeifer
jordanpfeifer@gmail.com

Sophia Hoefle
sophia@cloudstarpictures.com

Thomas George
thomas@allaprima.media

Lynda de la Viña
lynda@vinjer.com

Ashley Tropea
tropeaashley@gmail.com



★ CLOUDSTAR PICTURES