

EUSABETH
RATH

FINJA LEONIE
MEYER

EVI
KEHRSTEPHAN

SCHWARZMOLL

FOTOGRAFIEN
VON
HINTER
DEN
KULISSEN

PHOTOGRAPHS
FROM
BEHIND
THE
SCENES

EXKLUSIVES DIGITALES FOTOBUCH FÜR UNSERE SUPPORTER

EXCLUSIVE DIGITAL PHOTO BOOK FOR OUR CONTRIBUTORS

DEFINITION



✕ Schwarz•moll n.

1 Neologismus **2** flüchtige Kreatur mit schwarzem Fell, die sich im Schatten unter Möbeln versteckt **3** Titel eines Kurzfilms



✕ Black•moll n.

1 neologism **2** elusive creature with black fur, hiding in the shadows under furniture **3** title of a short film



CAST

me / the / me / the

FINJA "FINCH" LEONIE MEYER

KARLA
HAUPTROLLE
MAIN CHARACTER



FINCH IN DER ANPROBE

☺ FINCH DURING FITTING

ELISABETH RATH

OMA / NANA BELLSTEDT

NEBENROLLE
SUPPORTING CHARACTER



EVI KEHRSTEPHAN

ASTRID

NEBENROLLE
SUPPORTING CHARACTER



FLEUR BREMMER

NELE

NEBENROLLE
SUPPORTING CHARACTER



FLEUR IM SCHLAFANZUG

:)

FLEUR IN PJS

ZIMTBÄR
PHRAGMATOBIA FULIGINOSA

RAUPE
CATERPILLAR
TIER-KLEINDARSTELLER
ANIMAL BIT ROLE





CREW

me / the / mi / will

ALESSIA MANDANICI

DREHBUCH, REGIE, SCHNITT
WRITER, DIRECTOR, EDITOR



PAULA ELINA KLOSSNER

TIDEWATER PICTURES

PRODUZENTIN

PRODUCER



STEPHAN BUSKE

TIDEWATER PICTURES

PRODUZENT, KAMERAMANN
PRODUCER, DIRECTOR of PHOTOGRAPHY



NATHAN HASZ

GIGANTIC STUDIOS

EXECUTIVE PRODUCER, SCRIPT SUPERVISOR,
CONTINUITY, POST PRODUCTION SUPERVISOR



DANIEL ALFIE
KNUSSMANN

REGIEASSISTENT, AUFNAMELEITER, STORYBOARDER
ASSISTANT DIRECTOR, UPM, STORYBOARD ARTIST



MELGE PRIES

TIDEWATER PICTURES

PRODUKTIONSASSISTENT

PRODUCTION ASSISTANT



MARTIN DEUBEL

OBERBELEUCHTER
GAFFER



STEFFEN FLACH

TONMEISTER
LOCATION SOUND MIXER



JOHANNA KOTTWITZ

SZENENBILD
PRODUCTION DESIGNER



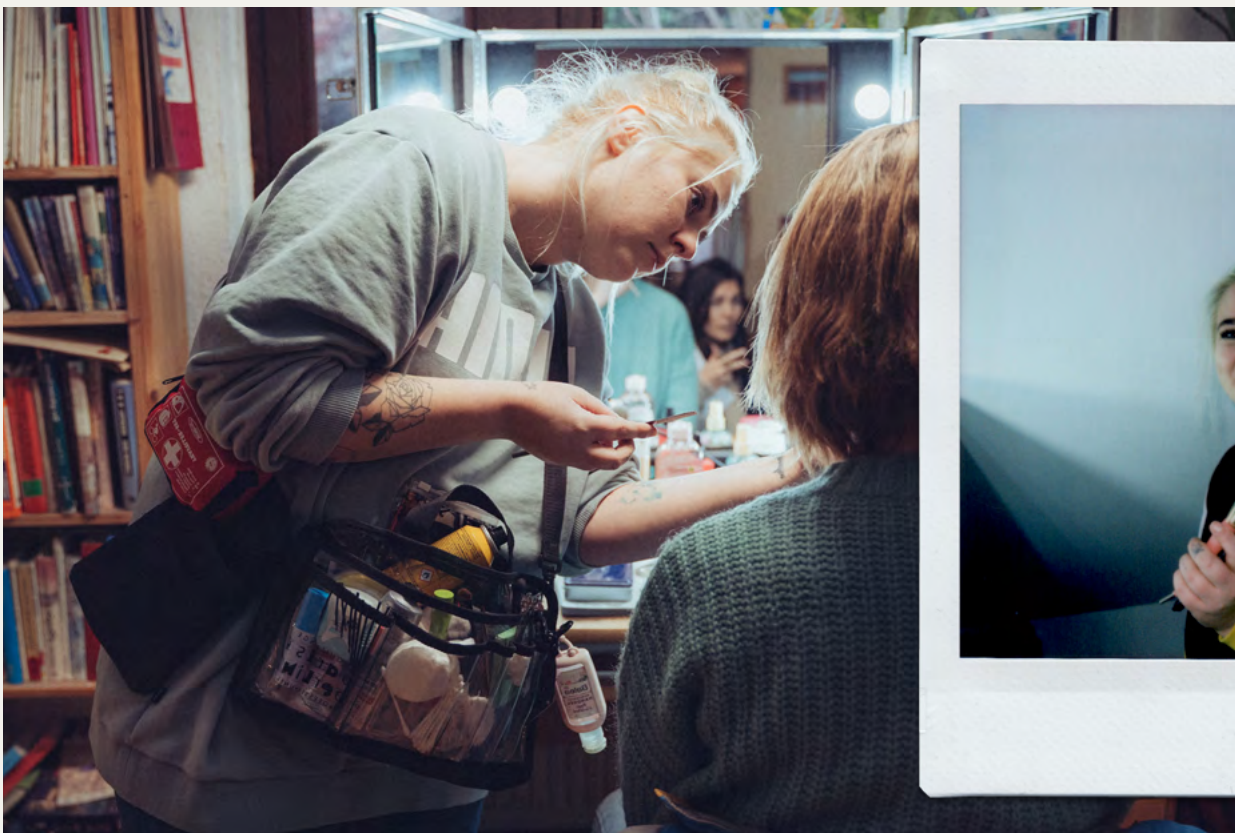
DIANA KOSCHLAKOW

KOSTÜMBILD
COSTUME DESIGNER



ANJA VINOGRADOVA

MASKENBILD
HAIR & MAKE UP



JUSTUS RIECHERS

1. KAMERAASSISTENZ
1st ASSISTANT CAMERA



TIM WEISGERBER

1. KAMERAASSISTENZ (2 Tage)
1st ASSISTANT CAMERA (2 days)



AKSEL STEEN BOELSMAND

2. KAMERAASSISTENZ
2nd ASSISTANT CAMERA



LORIS REITSCHMIDT

B KAMERA
B CAM OPERATOR



LEIF PLATH

BEST BOY
TRULY A BEST BOY



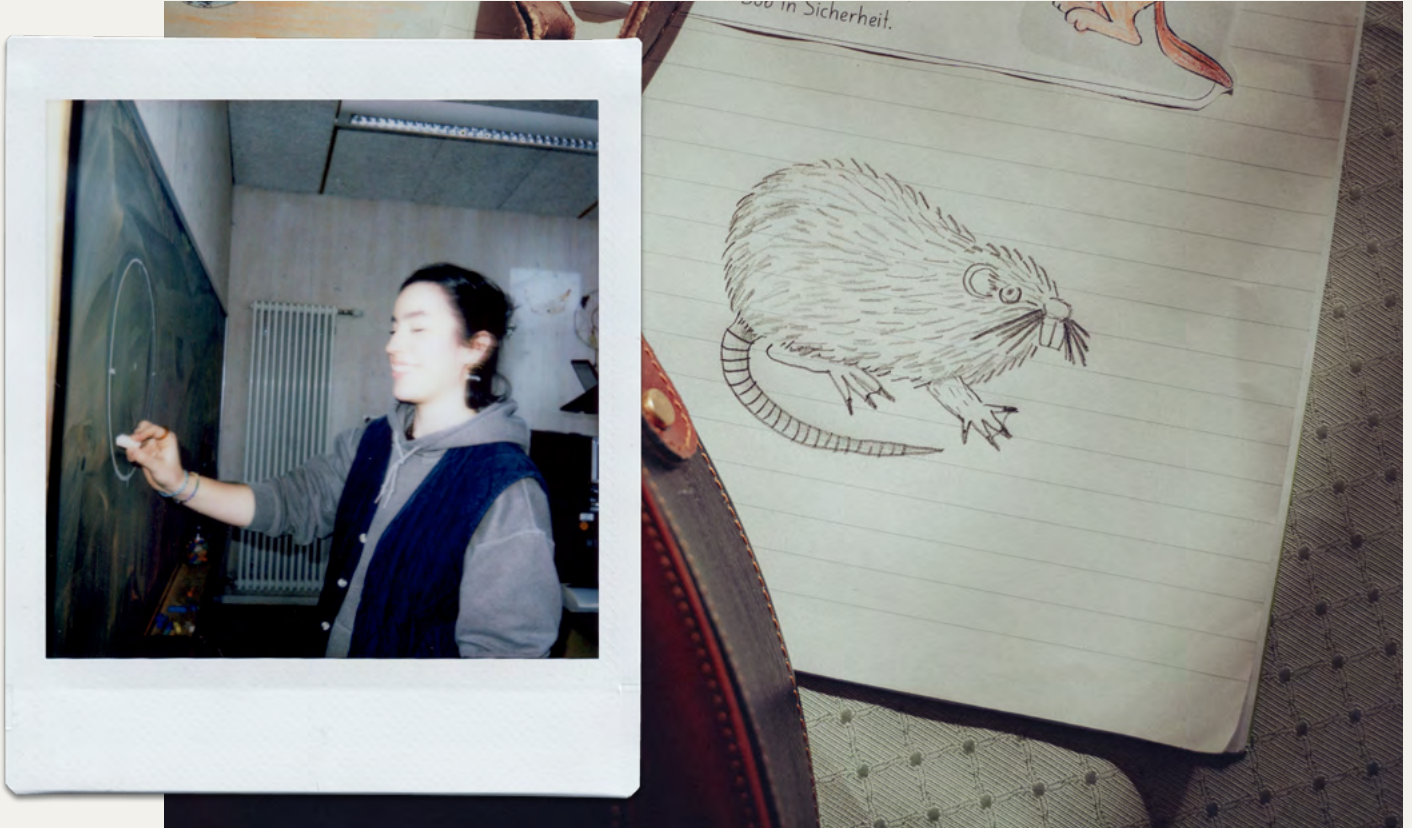
PHILIPP STEIN

TONASSISTENT
BOOM OPERATOR



MAIKE LINDNER

SZENENBILDASSISTENZ
ART DEPARTMENT ASSISTANT



FRANZISKA "SISSI" BÄHR

SET PRAKTIKANTIN
PRODUCTION INTERN



LORENZ WURDINGER

FAHRER
DRIVER



LARA PFEIFER

SET-FOTOGRAFIN
SET PHOTOGRAPHER

Ein großes **Dankeschön** an unsere Set-Fotografin **LARA**, die diese unvergessliche Produktion hinter den Kulissen eingefangen hat.

A big **Thank You** to our set photographer **LARA** who captured this memorable production behind the scenes.



TAG 1 OMAS HAUS

DAY 1 NANA'S HOUSE







TAG 2 OMAS HAUS

DAY 2 NANA'S HOUSE























TAG 5 KARLAS & ASTRIDS WOHNUNG
CLOSE-UP RAUPE

DAY 5 KARLA'S & ASTRID'S APT
CLOSE UP CATERPILLAR













