
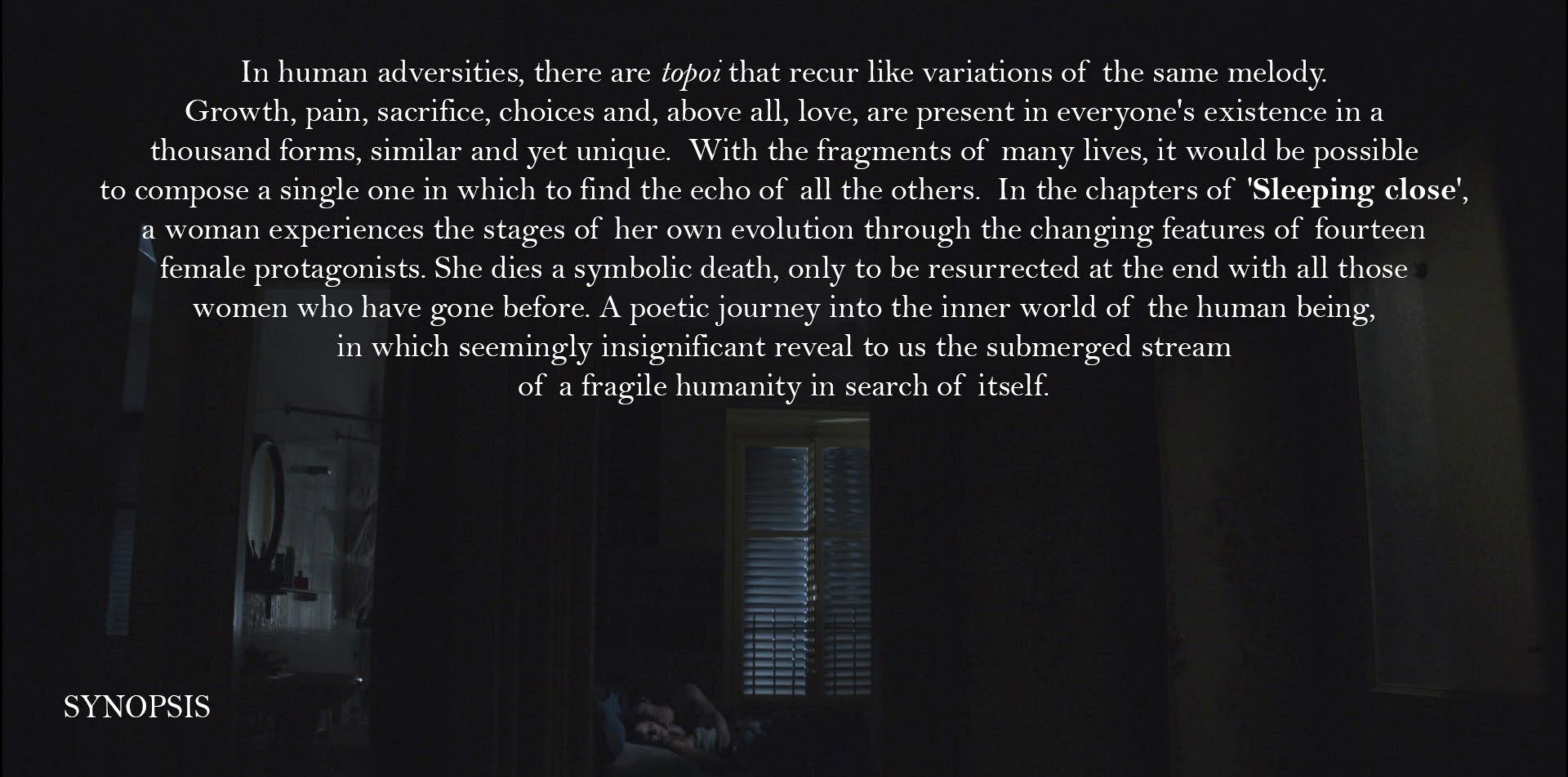


SLEEPING CLOSE

a film by GIULIO PERENO

A dimly lit room, possibly a bar or a study, with several people seated around a round table. The lighting is warm and low, creating a moody atmosphere. In the foreground, a man and a woman are seated at the table, looking towards the right. The man is bald and wearing a dark shirt, while the woman has long hair and is also wearing a dark top. They are both holding glasses. In the background, another woman with long hair is seated, looking towards the left. The walls are decorated with framed pictures and a small lamp is visible in the upper left corner. The overall scene suggests a quiet, intimate gathering.

Fragments of the lives of fourteen women form a unique composition in which reality and symbolism alternate, an echo of all other possible lives.-



In human adversities, there are *topoi* that recur like variations of the same melody. Growth, pain, sacrifice, choices and, above all, love, are present in everyone's existence in a thousand forms, similar and yet unique. With the fragments of many lives, it would be possible to compose a single one in which to find the echo of all the others. In the chapters of '**Sleeping close**', a woman experiences the stages of her own evolution through the changing features of fourteen female protagonists. She dies a symbolic death, only to be resurrected at the end with all those women who have gone before. A poetic journey into the inner world of the human being, in which seemingly insignificant reveal to us the submerged stream of a fragile humanity in search of itself.

SYNOPSIS



Original Movie Title

Dormiamo insieme

Genre

Poetic

Year

2023

Country

Italy/France

Language

Italian

Runtime

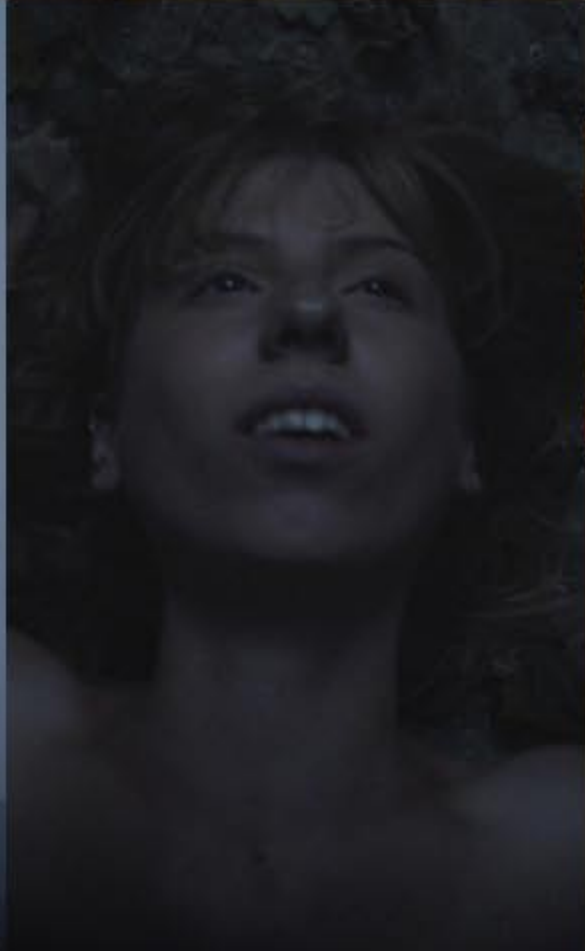
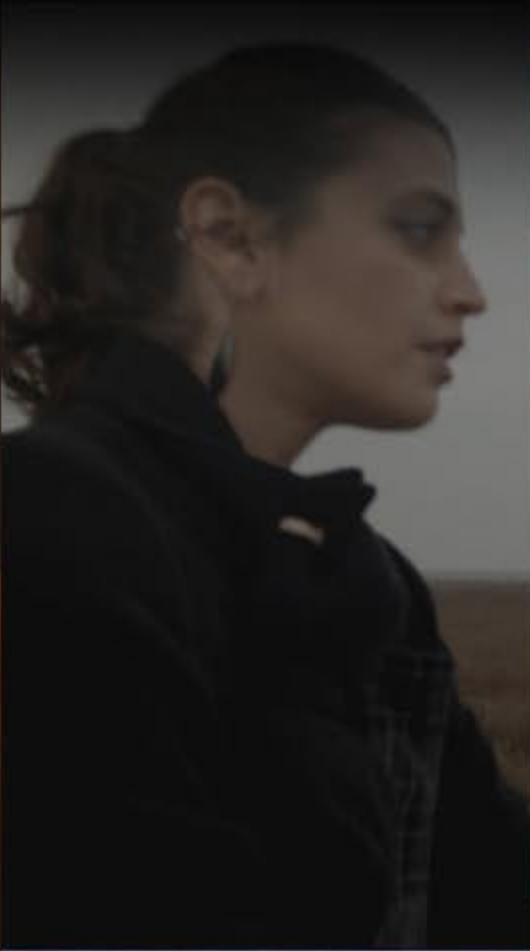
126 min

Aspect ratio

2:1

Sound mix

Stereo



A dark, grainy night scene of a field with a bright light in the sky. The text is overlaid on the right side of the image.

CAST
IN ORDER OF APPEARANCE

Maja : Dariya Trubina

Marion : Daria Anna Sitek

with Vittorio Campanella

Sunita : Claudia Cappuccio

Blu : Aurora Pernici

with Rares Gabriel Cirlan

Cecilia : Nicoletta Ceraolo

with Eldar Dedic

Dafne : Penelope Zaccarini

with Edoardo Vanoni

Esme : Michelangela Battistella

with Massimiliano Tommaso Alfi

Ester : Irene Iris Cordani

with Olivia Paola Longoni

Celine : Rossella Guidotti

Helena : Giulia Beretta

Alma : Amalia Stagnaro

with Elena Biagiani and Elisa Vignolo

Sylvia : Veronica Ripa

with Claudio Pereno

Erika : Veronica di Bussolo

Rebecca : Anna Castiglia

with Carmine Bianco

and Marcos Gonzàles Franco Alva

DIRECTOR/PRODUCER

Giulio Pereno

With an artistic background ranging from painting to photography, Giulio Pereno - Venice, 1996 - made his debut as a director in 2019 with **'Women that travel alone'**, which won the **Noce d'oro** at the **Benevento Cinema and Television festival** that same year. The feminine, travel, man's relationship with his environment and the quest for a life in harmony with nature are recurrent themes in his work.

With references to documentary and the world of theatre, his directorial research lies in the realm of auteur cinema.

- movie set picture Fiuli, episode 13 (Erika)

SCREENPLAYER/PRODUCER

Olivia Paola Longoni

The director's main collaborator in the production and on the set of **'Sleeping close'**, Olivia Paola Longoni - Varese, 1991 - has a background in humanities and literature and experience in organisation and logistics. She is co-writer of the script and author of the **poetic texts** narrated throughout the film.

MUSIC

Alfi Tommaso Massimiliano

Alfi Tommaso Massimiliano is a side project of Maria Virgin. He has collaborated several times as a composer in the field of video art and cinema and he uses research composition methods focusing on sound manipulation techniques. He is also the author of the music for 'Women that travel alone', written and directed by Giulio Pereno.



Maria Virgin is a multidisciplinary artist who explores sound in music through various media.

In his most recent works, he has been exploring the possibilities of applying experimental approaches to different fields such as film, popular music and sound design.



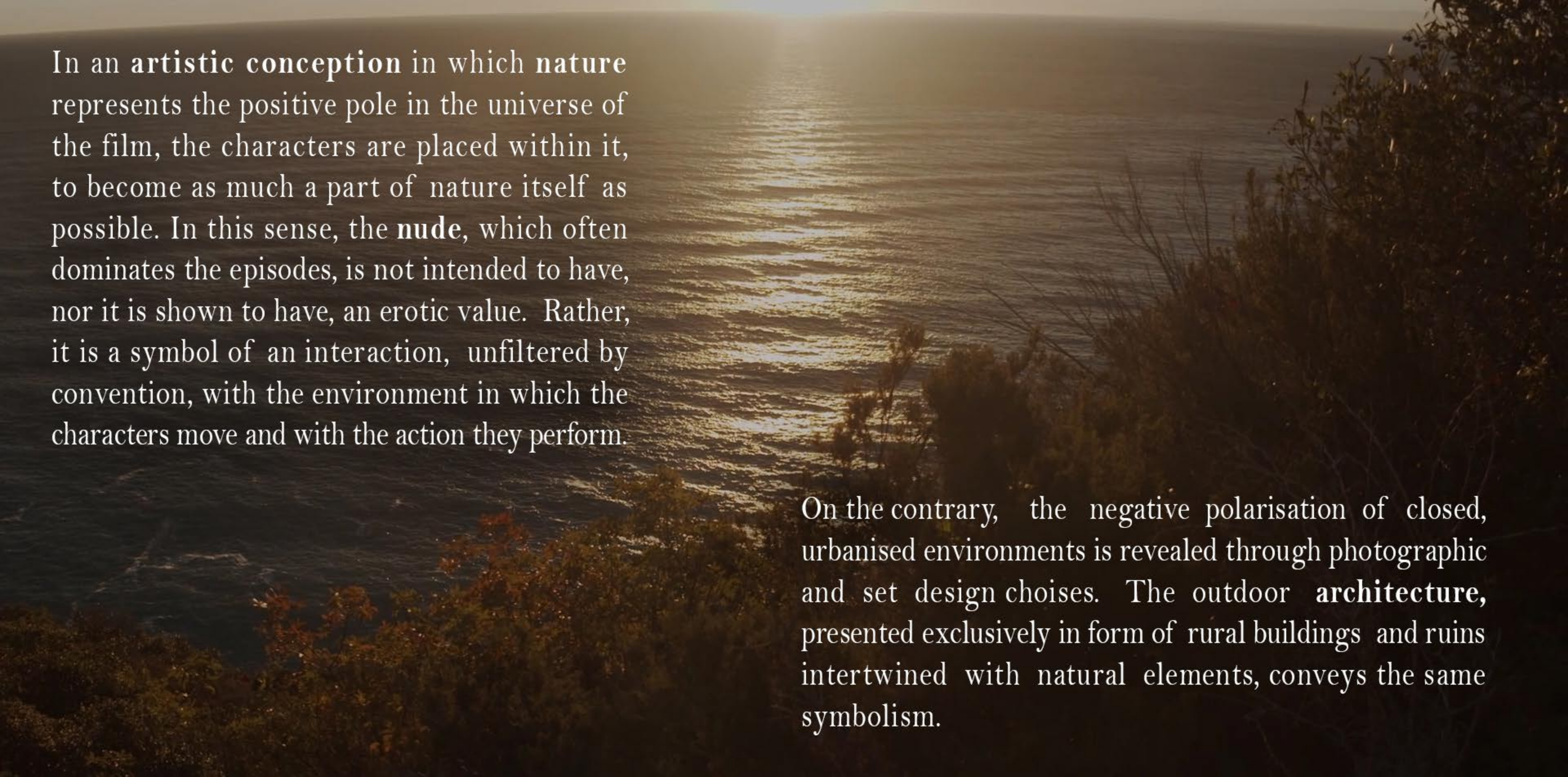
A woman in a dark jacket stands on a rocky cliffside, looking out over a vast ocean under a sunset sky. The foreground is filled with dense, dark foliage, and the background shows the ocean stretching to the horizon.

DIRECTOR'S NOTES

The **directing style** is characterised by static shots and long takes: this favours the slow pace of the film, which suits the poetic narration by three female actors. The style of the text and the **voice-overs** are intended to create a magical and intimate atmosphere, combining poetry with a fairytale narrative.

The **locations** chosen take the action from the dark and bare interiors of the city to the wide and bright exteriors, with a strong naturalistic component that is itself a main character of the film. For this reason, the research for the locations played a very important role in the shooting process. **Filming took place in 7 Italian regions, Burgundy and Brittany.**

Seeking to use a single lens for the entire feature film, for 'Sleeping close', a **Micro 4\3 PANA-LEICA wide-angle lens** on **BMP4K** in **2:1** format was chosen, in order to enhance the lowlights of the interiors while making the most of the panoramic exteriors.



In an **artistic conception** in which **nature** represents the positive pole in the universe of the film, the characters are placed within it, to become as much a part of nature itself as possible. In this sense, the **nude**, which often dominates the episodes, is not intended to have, nor it is shown to have, an erotic value. Rather, it is a symbol of an interaction, unfiltered by convention, with the environment in which the characters move and with the action they perform.

On the contrary, the negative polarisation of closed, urbanised environments is revealed through photographic and set design choices. The outdoor **architecture**, presented exclusively in form of rural buildings and ruins intertwined with natural elements, conveys the same symbolism.

Directed by GIULIO PERENO

Screenplay OLIVIA PAOLA LONGONI

GIULIO PERENO

Music ALFI TOMMASO MASSIMILIANO

Texts OLIVIA PAOLA LONGONI

Voices

AMALIA STAGNARO

GIULIA BERETTA

IRENE IRIS CORDANI

Photography GIULIO PERENO

Sound and Mix RARES GABRIEL CIRLAN

Casting IRENE IRIS CORDANI

Make-up GIADA LELLI

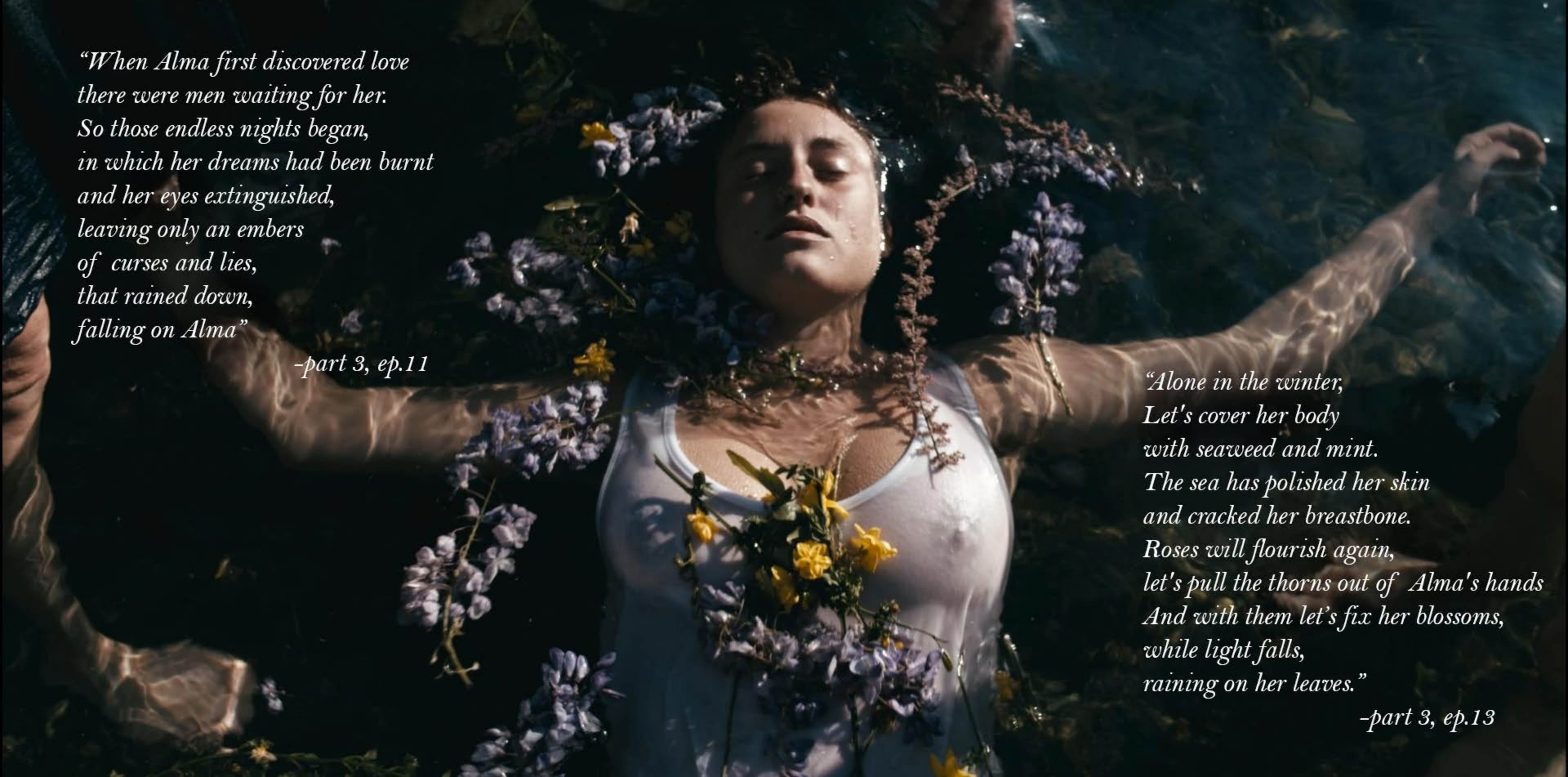
EDOARDO VOZZELLA

Graphics ALESSANDRO PAZZINI

Produced by GIULIO PERENO

OLIVIA PAOLA LONGONI



A woman with her eyes closed and a serene expression is floating in dark, rippling water. She is wearing a white tank top and is surrounded by a large arrangement of purple and yellow flowers. Her arms are outstretched, and the water reflects light, creating a shimmering effect on her skin and the surrounding blooms.

*“When Alma first discovered love
there were men waiting for her.
So those endless nights began,
in which her dreams had been burnt
and her eyes extinguished,
leaving only an embers
of curses and lies,
that rained down,
falling on Alma”*

-part 3, ep.11

*“Alone in the winter,
Let's cover her body
with seaweed and mint.
The sea has polished her skin
and cracked her breastbone.
Roses will flourish again,
let's pull the thorns out of Alma's hands
And with them let's fix her blossoms,
while light falls,
raining on her leaves.”*

-part 3, ep.13



CONTACTS

dormiamoinsieme@gmail.it

www.giulipereno.com

+39 3516008161

+39 3665276913