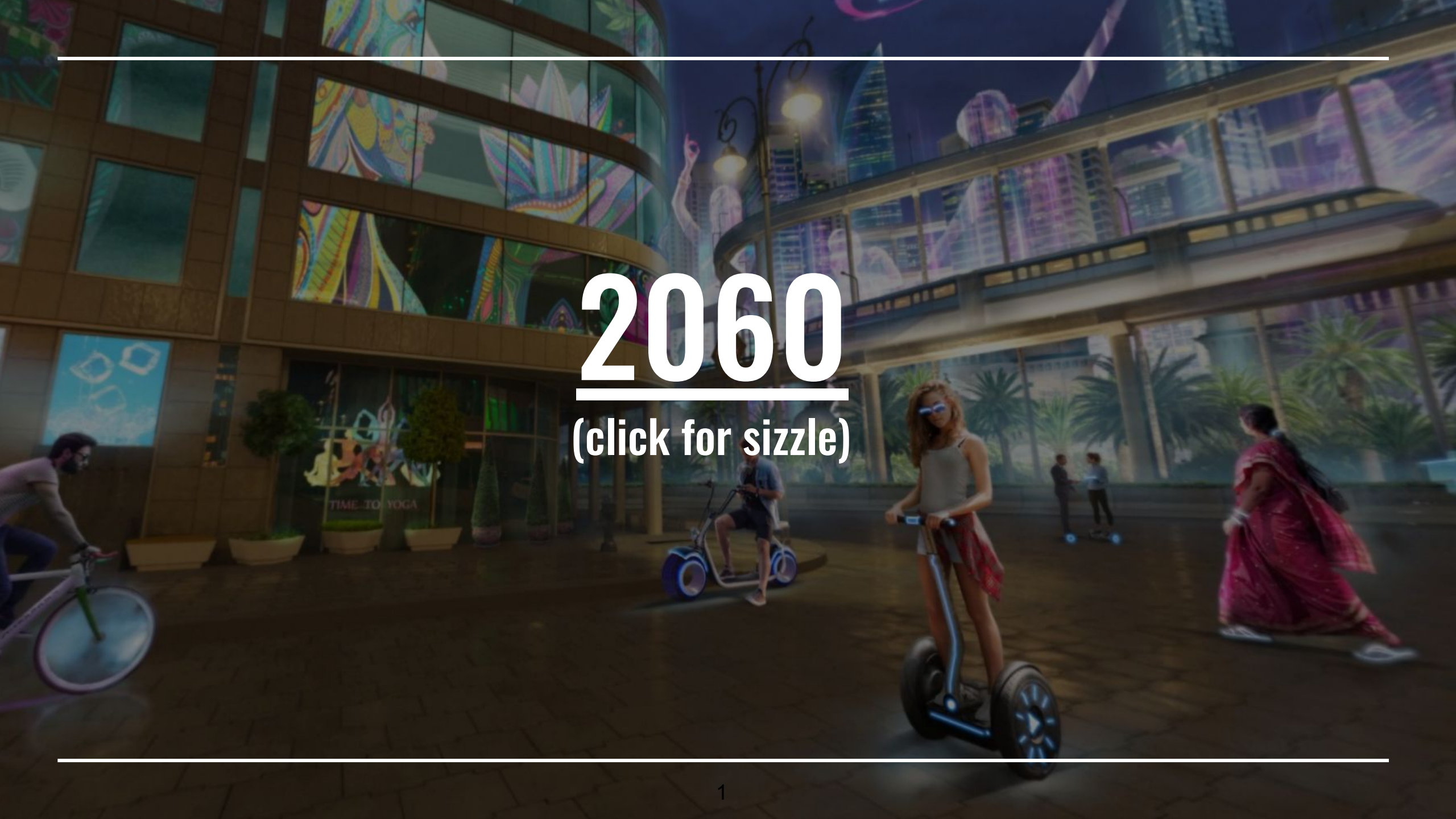


---

# 2060

(click for sizzle)



---

## Executive Summary

Sustainability has become a [necessary buzzword](#), especially over the last few years. But why are all the TV shows and movies surrounding it based on dystopian, apocalyptic scenarios of what could happen? It's hard to imagine the possibilities when you're mired in heaps of hopelessness. In fact, between 2020 and 2021, Google searches for "climate anxiety" went up by *565 percent*.

In order to achieve the goal of 9 billion people [living well within planetary boundaries](#) by 2050, not only do we need a global paradigm shift; we need to believe as a society that ***true transformation is possible***.

So, let's flip the script. What better way to highlight the possibilities of radical cooperation, innovation and imagination than through the levity, heart and humor of character-driven comedy?

Introducing **2060**: A TV series designed around a **realistic and optimistic** portrayal of our collective near-future. Real solutions to some of our biggest problems already exist; the goal is to get the word out in a fun, inspiring and hilarious way.

The Jetsons was set in the 2060s; 100 years from the time it aired. Now that we're closer, we can imagine what this high-tech, equitable and sustainable future could really look like-with the help of top leaders and experts from around the world.

**Logline:** Against the backdrop of a sustainable and thriving 2060 world, we follow 15-year-old Bex Carter as she navigates the ups and downs of teenage life, discovering her true potential in the process. It's ***The Jetsons meets Modern Family***, grounded in real eco-solutions that exist today.

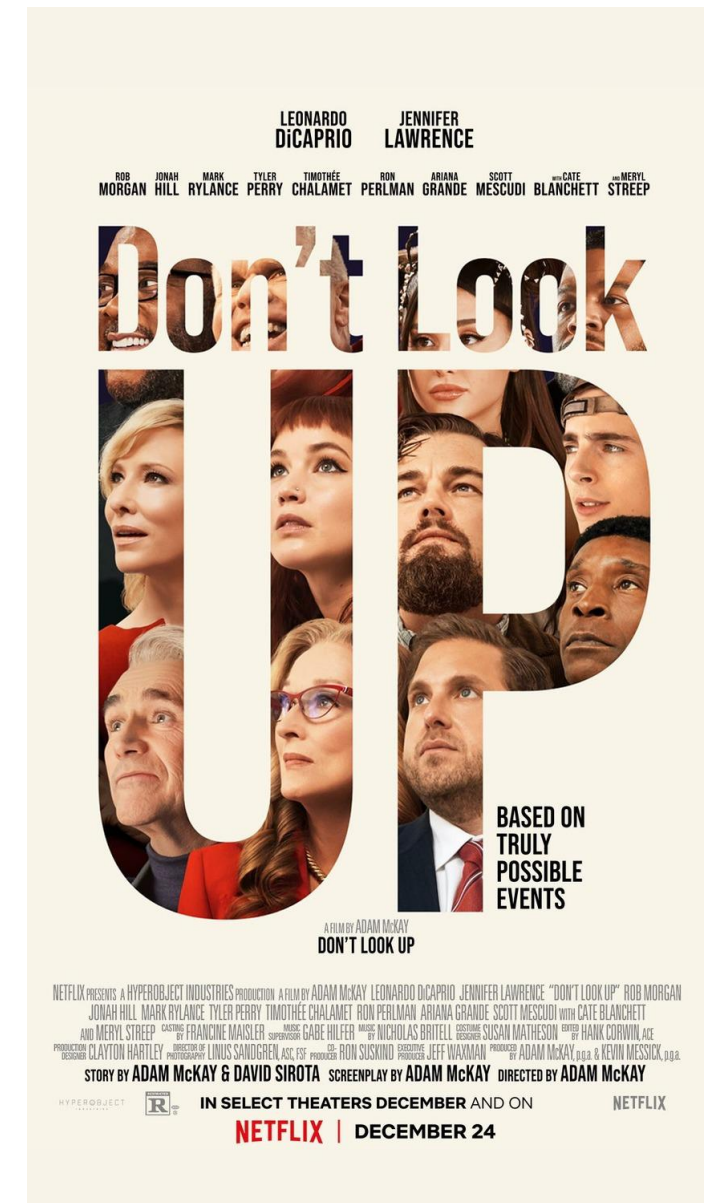
# The Concept

[Streamers like Netflix](#) are weighing in with compelling data that says:

***The world is ready to flip the script on sustainability.***

We know that comedy can have a [profound impact](#) on societal change. It pulls people in, disarms them, lowers resistance and creates a positive emotional connection, which can, in turn, inspire engagement and action. Look no further than the runaway success of ***Don't Look Up***, one of Netflix's top 10 most successful films of all time – a comedy about climate change.

Utilizing this highly impactful genre and an **inclusive, female-driven** narrative, we will highlight new and exciting ways we can thrive on a planet (and within a galaxy) that has succeeded in re-implementing harmony—told through a foundation of **familiar and heartwarming characters**.



---

# The World

*I had the opportunity to introduce 2060 at the UN headquarters in October '22. I have access to some of the top innovators and luminaries on the planet who are ready to lend their expertise in developing this potential 2060 world.*

**The year is 2060.** We drop into an unnamed metropolis in the USA.

## Here's what's changed:

The majority of energy comes from **renewable sources**: solar, wind, geothermal, hydrogen and accessible nuclear.

AI is everywhere and people **love their robots**.

**Nanotech, 3D-printing** and **biomimicry** have transformed manufacturing. Materials made out of carbon nanotubes are 100x more durable than steel, and are used to create sustainable infrastructure both on and off planet.

Everyone lives a **zero-waste lifestyle**. Everything from clothes to appliances, bikes to personal devices are reused, repurposed, retrofitted or composted.

Transportation is faster & easier with **walkable cities**, shared **EV cars**, **maglev trains**, and **eVTOL** (electric vertical take off and landing vehicles) .

Farms are **smarter, vertical** and **underground**, popular in urban areas, and powered by drones and nanotech .

Our diet is mostly **vegetarian** with agri-proteins and occasional meat or fish.



---

## The World (Cont.)



**The metaverse** opens up new possibilities to rethink the home, entertainment and work environments. Why have a meeting in a drab office when you can have it on Mars?

Students learn in **blended school systems**, virtually and in a physical class.. Kids pick their speciality and choose their pace early as information becomes increasingly accessible and gamified. **Education is now life-long** as our extended life spans allow more time to invest in changing curiosities and passions.

Physically disabled people live fully-abled lives with **advanced prosthetics** powered by AI and the human brain.

**Multi-generational families are on the rise** with the onset of radical life extension. People live well into their hundreds, and they'll be as vibrant and healthy as when they were half their age (See character CHRISTINE).

Space tourism and even **habitats in Low Earth Orbit** (LEO) become a reality.. Commercial missions to the Moon, lunar tourism, and even asteroid mining are happening.

Beginning with the Artemis missions in 2024, **more women and people of color join the ranks as astronauts, scientists and engineers.** Recurring characters SOLEIL and RUBY (LUKE'S non-binary sister and their partner) highlight this new frontier.

**Diversity and radical collaboration reign** as we see various ethnicities, genders, sexual orientations and cultural backgrounds in positions of leadership and power.

---

# Main Characters

The show features an ensemble cast with real depth and complete season/series arcs, similar to the *Ted Lasso* sitcom format.

**BEX-Our main character (born 2045)** *Everyone around her seems to have it all figured out...or do they?* 15 year old Bex navigates the ups and downs of life as a teenager in 2060. Just like in our time, being a teenager is a paradox; she's intelligent but ignorant, wants to conform but also have her own identity. Though she's not quite sure who she is or what she wants, she definitely knows what she isn't-*anything like her family*. Her two biggest assets-courage and an extraordinary imagination-will take her far in this series as she finds her voice and her place in this world.

**CORA-Bex's Mom (born 2017)** Mom, athlete, amputee, biomedical engineer and first generation American-Cora does it all! Highly neurotic with a ridiculously strong competitive streak and an AI powered prosthetic limb, she's practically unstoppable-at least, that's what she tells herself. Finding balance and accepting those around her as who they truly are is Cora's series-long endeavor.

**CHRISTINE-Brooklyn's Great-Grandmother, Luke's Grandmother(born 1972)** Christine. the godmother of 'tough love,' grew up in another time-and it shows. Her arrogance, hypercritical nature and stubborn hold on the past create perpetual challenges for the Carter family. Although she's 88, she looks and feels 70-thanks to 2060's advancements in wellness and anti-aging. Christine is our portal from our 2020s reality as she (slowly) learns the ropes and begins to adapt to modern urban life.

**AIDAN-Bex's Dad (born 2012)** Aidan is a former software engineer turned regenerative farmer, running the urban farm on the roof of the Carters' building. An eternal dreamer but awkward and socially inept, Aidan enjoys concocting wild experiments with his urban farm - like the crossbred 'Broccquat' (broccoli kumquat-they're about as terrible as they sound). After spending most of his life attempting to live up to others' expectations, he decides to figure out what *he* wants-a journey which unfolds over the course of the series.

**COSMO-Bex's brother (born 2051)** Cosmo is an eight-year-old prodigy with a genius IQ - and zero common sense. Diagnosed as a baby with [CIP](#), Cosmo feels no physical pain whatsoever- which causes a lot of wariness and 'helicoptering' from his family. A defiant brainiac with an aptitude for misfortune, he's Kevin Mccallister meets *Big Bang Theory's* Sheldon.

---

## The Family

**SOLEIL AND RUBY-Aidan's sister and her partner (born 2015, 2023)** Soleil is a space engineer, intergalactic entrepreneur and visionary. She witnessed the landing of the NASA Artemis mission (2025) and visited the Magellan telescope when it was unveiled the same year, sparking her passion and enthusiasm for the final frontier. Ruby, an indigenous woman of the Chippewa Cree tribe, is a geologist, aquanaut and astronaut. Ruby wears her heart on her sleeve and has a flair for the dramatic. She wishes Soleil would express her true feelings a little more (ok, at all).

**MEI AND BEN-Cora's parents: (born in 1992 and 1991)** Ben is an automotive engineer from Indonesia who loves to tinker with new (or old) gadgets. Mei is a germaphobe microbiologist from Shanghai. They met in China and moved to the US before Cora was born, when Ben got a job at a new EV plant. True believers in the American Dream, they pushed Cora to have a life they'd always dreamed of—which didn't make life easy...

**NICOLE AND TROY -Luke and Soleil's parents (born in 1990 and 1987)** Nicole (Christine's daughter) is a former tik tok star, activist and fashion designer. Although well educated, her priorities pivoted when she met Troy and had Aidan at 22 (something her mother, Christine, abhorred). Troy, a laid-back cannabis entrepreneur, asked Nicole for a divorce in 2025. Now their amicable, platonic relationship allows them to run a successful business together—a B&B in low earth orbit, where they get to spend time with Soleil and their partner.



Ruby

## The Friends



**MILA-Brooklyn's best friend (born in 2045)** Creative, opinionated, and passionate about STEM, Bex wonders if Mila might be the long lost daughter of her own parents! An identical twin who's looking for her own individuality, Mila decides to try on every other known persona out there. One week it's emulating a popular VR star, the next she's considering becoming a monk. Creating new avatars in the metaverse helps her quickly and continuously reinvent herself. It's 2060 - why choose when you can be them all?

**CASSIE- Bex's nemesis (born 2046)** She's neurodivergent and one of the most adored students in school-being popular in 2060 is a whole new ballgame! Her powerful family's many accolades have given Cassie a lot to live up to. Throughout season 1, we get to know more about her and why she has singled Bex out as an enemy-exposing a totally new side to this character.

**CONNOR-The new kid in school and Bex's crush (born 2045)** Tall, dark and handsome, highly creative and curious, Connor seems to be the ultimate catch-especially to Bex and Cassie. His natural adoration for space however is almost too much for Bex to handle. Their mutual love of music is where they find common ground-and a whole lot more...

**RAJ-Cosmo's best friend (born in 2051)** Their relationship begins when Raj bullies Cosmo at school and evolves to an unlikely friendship. Like Cosmo's mom, Raj is a first generation American. Over the season, Raj discovers a love for hip hop and begins creating his own-using rapping as a way to work on his English skills. Deathly afraid of blood and physical injuries, Raj takes it upon himself to be Cosmo's 'bodyguard'- much to Cosmo's dismay...

# Pilot



Life is tough **in 2060**. At least, Bex Carter thinks so. Living with a family of certified ‘geniuses’ is enough to make any teenage girl feel like an alien. Sure, her brilliant and successful parents tell her how ‘great’ things have gotten since renewable energy, zero-waste lifestyles and radical, global cooperation averted near-certain global catastrophe. But Bex fails to see how that changes her current situation: life as a below-average outcast. Her only respite lies in her vivid imagination, made real through her virtual life— where her **avatar** can be **anything her heart desires...**

It’s ‘**Activate Your Future**’ day at school, and everyone but Bex is excited. Sophomores choose their specialty for the remainder of high school based on career ambitions. One small problem: *Bex has no idea what she can do*. Choosing a future when you think you’ve got zero talent is a major challenge. Hell bent on impressing the new boy in school, Bex’s impulsiveness gets the best of her—and she ends up with much more than she bargained for...

To add insult to injury, well-meaning Cora invites Bex’s cantankerous great-grandmother, **Christine**, to live with the Carters after decades of estrangement. Bex’s worst nightmare is realized—it sure feels like **the end of the world!**

---

# Season 1

The season follows this **trial by fire** as Christine, Bex and the rest of the Carter clan learn to live together. Christine (a GEN-Xer) is our touchstone for our ‘real world.’ Through her eyes we experience the juxtaposition of daily life in this future 2060 metropolis against our current 2020s reality. Well-timed flashbacks over 40+ years from her POV will allow us to catch a glimpse of how we ended up in this sustainable world. A former marine biologist, **Christine** is inspired by her young family’s ambition (despite herself), and decides to go **back to school** as the season progresses.

**Aidan’s sudden job transition** causes him to question his past choices, and where he wants to go from here. Tightly wound and competitive **Cora comes to terms with her skewed view of ‘success’** through total burnout—and the help from an unlikely source. **Cosmo starts public school** and makes a new ‘frenemy’ as he navigates life with his condition. He ultimately gets a satisfying ending at the end of the season on his quest to discover ‘the meaning of life.’ **Soleil** ends up in a **crisis on the lunar base** and turns to the collective intelligence on Earth for help. And **for Bex**, tension between her new role at school and existing under the same roof as Christine comes to a head. The line between **what’s real and imagined begins to blur** as she retreats into her virtual life to avoid dealing with the consequences of her choices. At the end of season 1, Bex realizes the technology she built in the metaverse for fun could be the answer Soleil is looking for. She ultimately must decide if she has what it takes to become **the leader she was born to be.**

Christine and Bex are on parallel journeys of self discovery throughout season 1, ultimately deciding their future is **whatever they decide to make it.**



## Additional Episodes

**Episode 2** - Christine and the Carters clash over the new living situation. Cora tries too hard to support Bex's career choice. Cosmo's first day at school is not what he imagined.

**Episode 3** - Christine struggles with returning to city living. Bex is forced into a project with her nemesis.

**Episode 4** - When Brooklyn stumbles upon Christine's college thesis from the 90's, she passes some of the findings off as her own-with unintended consequences. Cora and Cosmo visit a quasi-religious sanctuary in Cosmo's search for meaning.

**Episode 5** – Thanksgiving/holiday episode. Old wounds resurface and cultures clash when Mei, Ben, Nicole and Troy visit the Carter household.

**Episode 6** - When Christine decides to go back to school, she and Bex come to terms with the fact that they need each other's help. Aidan deals with unexpected news.

**Episode 7**- When their AI goes on the fritz, Christine ropes the family into household chores the "old fashioned" way. Bex's lies begin to catch up with her when her crush asks her out.

**Episode 8** – Christine opens up about her diagnosis, prompting Bex to reassess her choices. Aidan's surprise party for Cora doesn't go as planned.

**Episode 9** - Bex comes clean about her school project and deals with the fallout. When Cosmo's experiment lands him in the hospital, Christine helps him see the light. Soleil ends up in a crisis on the lunar base and turns to the collective intelligence on Earth for help.

**Episode 10** - When Bex realizes the technology she built in the metaverse for fun could be the answer Soleil is looking for, she must decide if she has what it takes to become the leader she was born to be. Christine says goodbye with the help of her reunited family, bringing an opportunity for closure - and for new beginnings.



Aidan with brocquat

# Future Seasons

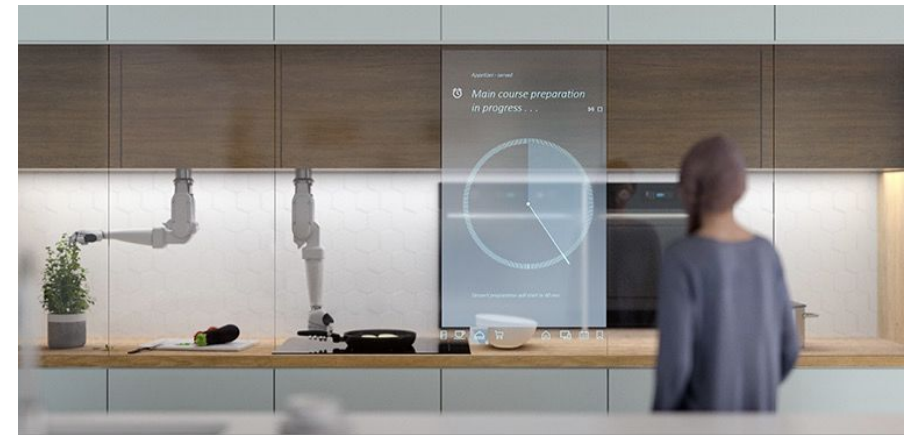


**Questions we ask throughout the series include:** What does a zero waste world look like? How has renewable energy and innovative carbon capture affected our climate? How is authenticity defined in this world of digital twins and avatars? What does indigenous culture and respect for the land look like on the moon? Will the concept of “aging gracefully” change completely? In a world with many of our current issues ‘solved’-what are the new challenges, and how are people working together to solve them?

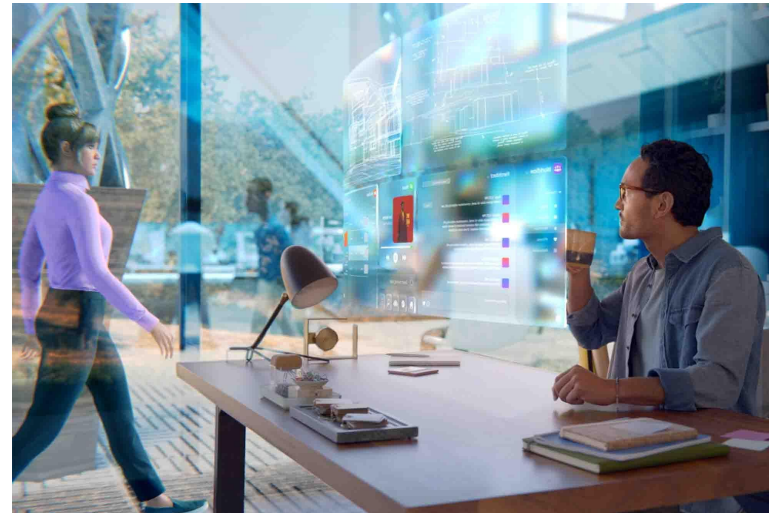
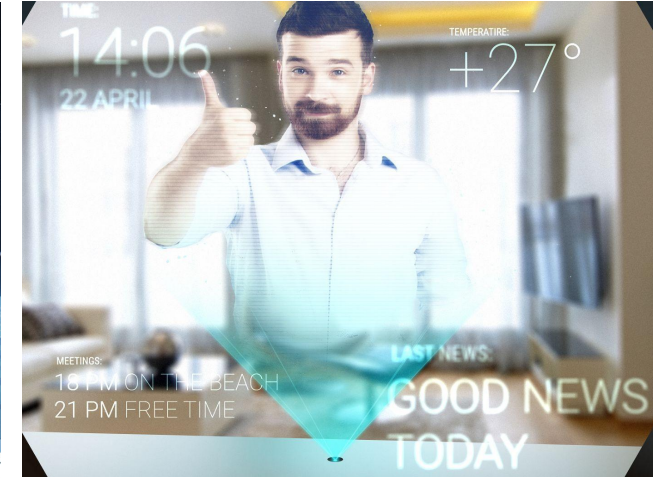
There’s **much to mine for future seasons** with such a diverse and closely-knit community to play in. Off-planet family hijinks, metaverse woes, the good and bad of automated life and a more sharing-based economy, dating of the future, generational conflict through technological abilities, disabilities-turned-superpowers...the universe is the limit! We are also capturing the messiness of growing into your adulthood and the critical role family plays in getting through it. Mirroring trends among Gen Z as they navigate an unpredictable future, the show will reflect our current struggles and desires as we collectively face a cultural and environmental paradigm shift.

And as **Bex and Cosmo grow up, so does our world.** Every season will employ the newest and most fascinating advancements in our technology, sustainability, cultural transitions and so much more.

# Tone & Style



# Tone & Style



---

## About Lindsay Kent

[Lindsay Kent](#) is a multimedia producer, director and writer based in San Francisco. Her work has been featured on the Travel Channel, Lifetime, Fox, National Geographic and in renowned international film festivals. In 2013, together with a team of activists and A-list celebrities, Lindsay summited Mt. Kilimanjaro for the NGO campaign *Summit on the Summit*. Working with top brands like KLM, First Ascent, P&G and HP, Lindsay produced and dispatched the project's digitally gamified content series in real time from the mountain. Inspired by this holistic approach to high-impact content, she founded Krenshaw Films, a concept-through-delivery media production outfit with her sister, Webby winning producer Lauren Harris. Lindsay has since produced and directed two feature documentaries, dozens of short, cross-platform projects for major brands, and is currently developing several scripted and unscripted series. She is also producing an innovative new travel series with Expedia called [The Next Turn](#).



---

# THANK YOU

For more information, contact  
Lindsay Kent  
512.789.3125  
[Lindsay@Krenshawfilms.com](mailto:Lindsay@Krenshawfilms.com)