

DIRECTED BY AIMEE PATMORE
WRITTEN BY AIMEE PATMORE AND ANNA DVORAK

PINCH

What lengths will one go to in order to be accepted by the world.

PRESS KIT

LOGLINE

A female high school student battles a silent illness, which she hides from her mother, as she continues to be quietly overwhelmed by the pressures of family, peers and society.

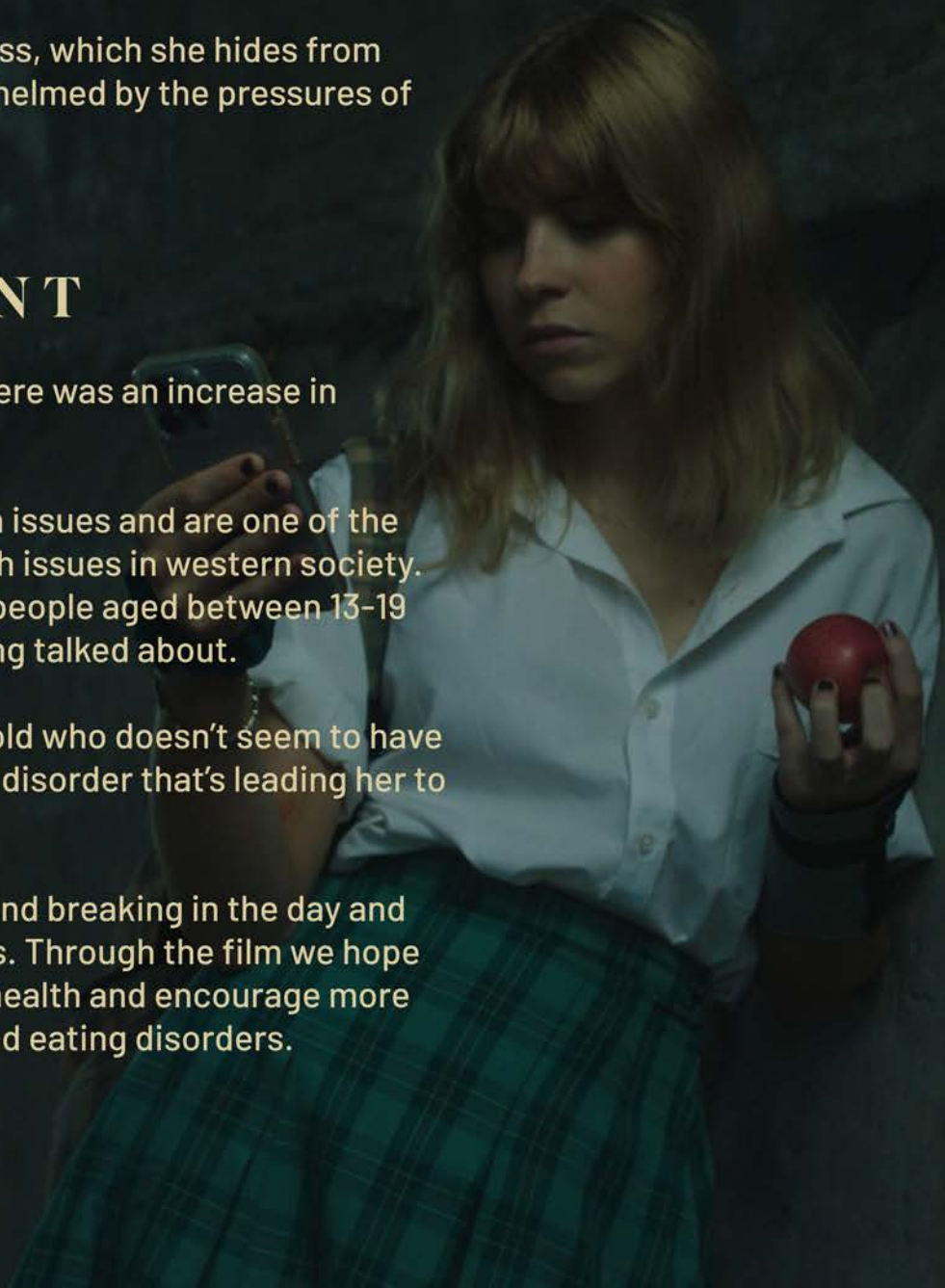
ARTISTIC STATEMENT

The story for *Pinch* came about in COVID when there was an increase in hospitalization due to mental illness.

Eating disorders cause the most long term health issues and are one of the most untreated and underfaciltated mental health issues in western society. With a large portion of that number being young people aged between 13-19 years old. It's an epidemic and often not something talked about.

This film is a character study of Abby, an 18 year old who doesn't seem to have a tumultuous life, but is struggling with an eating disorder that's leading her to lose her mind and health.

The aim of *Pinch* is to dive deeper into a young mind breaking in the day and age we live in with its pressures and expectations. Through the film we hope to continue to break the stigmas around mental health and encourage more conversations in society around mental illness and eating disorders.





APPROACH

Pinch explores the mind of a young woman struggling with an eating disorder through a non-linear form of storytelling. Through the use of flashbacks and montage we explore the distorted state of our protagonist Abby, as things become more blurred and chaotic in her mind.

The sound design contributes to revealing the turmoil of our protagonist through the metaphor of the sound of a clock throughout the film. This clock sound progresses from being in the background of the film in the beginning to becoming more prominent at the end. Hinting at the uncertainty of what may lay ahead for Abby, especially if she continues to hide and this illness is left untreated.

This abstract form of storytelling aims to creatively interpret the pace and life of a brain and body under the pressure of mental illness.



THE FILMMAKER
LEAD ACTOR/DIRECTOR

Aimee Patmore has been a working actor since she was a child working in the Australian industry for more than 10 years. Her passion for film grew through these formative years.

Pinch is Aimee's directorial debut and was inspired during the pandemic while teaching music students, Aimee witnessed the increase in mental health concerns amongst youth as they navigated an ever-changing world.

She chose to focus on an eating disorder as it is a health epidemic that is one of the least understood and funded in Australia and globally.

Aimee is also passionate about giving female artists a platform and is proud that 80% of the cast and crew of *Pinch* are female or non-binary. She hopes that this film will not only enlighten people to the health issues society is facing but also shine a spotlight on upcoming Australian female talent.

MEET THE CREW

Producer/Co-Writer/1st AD Anna Dvorak

Anna Dvorak is a trilingual filmmaker from Sydney, Australia, who is a member of the Australian Director's Guild. She has worked on various sets over the past five years, ranging from long form to short and from drama to documentary, including films such as Taika Waititi's *Thor: Love & Thunder* and Russell Crowe's *Poker Face*.

Anna's previous work has screened at international film festivals, including her first short documentary, *Refined In The Fire*, which screened and won some awards at 18 international film festivals and was exhibited in Tasmania on The Loop in 2020 for International Women's Day.

Currently in 2023, Anna is working full-time in Editorial on David Leitch's *The Fall Guy* and alongside that developing a feature documentary *Generation Rent* while working on numerous other shorts.

Cinematographer Annalise Kafetzi

Annalise Kafetzi, recently graduated in 2022 with a Bachelor of Communication, majoring in Media Arts and Production and Digital and Social Media at the University of Technology Sydney. Holding a strong passion for both photography and videography, she loves to operate the camera for both professions.

Camera operating her first dance short film in 2018 known as 'Charade', her DOP debut took off with a short film; 'Carla' in 2020, in addition to 'Toska', 'Apartment 55', 'Hank' and 'Straight Man's Burden' in 2021 at UTS. Annalise has also been 1st Assistant Camera for AFTRS short films; 'Kevin' - a documentary in 2017 and 'Romantic Lead' and 'Between The Lines' in 2020. Most recently, Annalise has worked in the camera department on Stan series *Bump* and on David Leitch's *The Fall Guy*.

CAST

Abby

Aimee Patmore

Angela

Vicki Gard

School Girl Extras

Ava Jones, Isabella Conti-Morato

KEY PRODUCTION CREDITS

Director

Aimee Patmore

Writers

Aimee Patmore & Anna Dvorak

Producer

Anna Dvorak

Director of Photography

Annalise Kafetzi

Production Designer

Ruby Swain

Editor

Timothy Hadwen

Sound Designers

Julian Oliver, John Hresc

Music Composer

Sophia Christopher

First Assistant Director

Anna Dvorak

Script Supervisor

Grace-Anne Farren-Price

Production Assistant

Corah Fortune

Unit Stills Photographers

Isabella Conti-Morato, Aravind Shanavaz

First Assistant Camera

Ben Lawford

Second Assistant Camera

Michael Thompson

Gaffer

Uro Recchioni

Lighting Assistant

Catherine Mai

Art Assistant

Hyeryung Choi

Hair & Makeup

Kim Audrey Garcia

Sound Recordist

Suvipra Vaidya

Sound Assistant

Fernanda Dedic

Colourist

Christopher Kakoliris

Sound Mix

John Hresc

Graphics

Roweena Ow

SPECIAL THANKS TO

All our crowdfunding supporters including Angie Caldwell, Acts Praise, Christine Gils, Charbel & Malcolm Koh, Charlotte Rouchecouste, Daniel M, David Frederick, Donald Caldwell, Ellie Frederick, Isaac Hananiah, Joost Timmer, Julian Furey, Lee-Anne Organ, Lily Dunlop, Maddie Flood, Michelle Le, Peter & Sheridan Carmichael, Tin Pang and Wendy Unwi.

Also to **VA Digital Hire** for helping us secure the Arri Amira and gear to shoot this film.