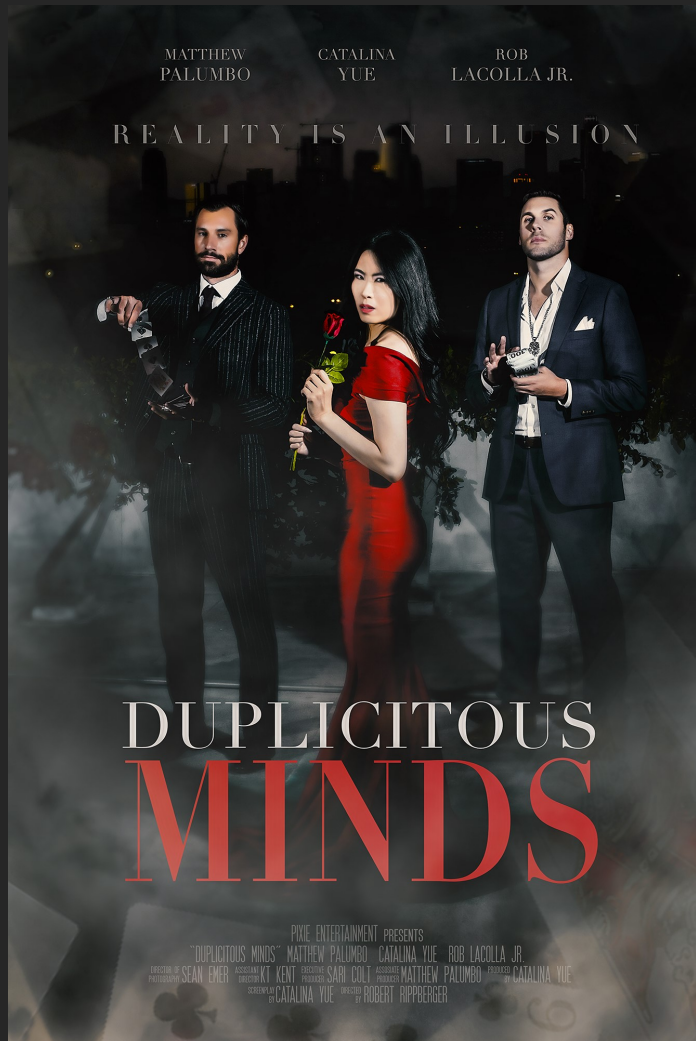


DUPlicitOUS MINDS

A Pixie Entertainment Film



INTRODUCTION

Duplicitous Minds is a multi-award winning film. Never has a story had so many layers and twists yet it gives audiences a choice kind of like a “Choose Your Own Adventure” style of ending. The film is a fun adventurous heist magic film yet with an underlying message that is relevant to the #metoo and Women’s empowerment and AAPI movement. From the color of the wardrobe to small props, there is symbolism and hidden meanings sprinkled throughout the film, which just like a magic trick takes the audiences on a journey to be surprised at the end. In magic, there is an illusion of choice, however our film allows the audience to interpret the film differently based on their choices or so it seems. Could the choices all be an illusion in the end?

TAG LINE

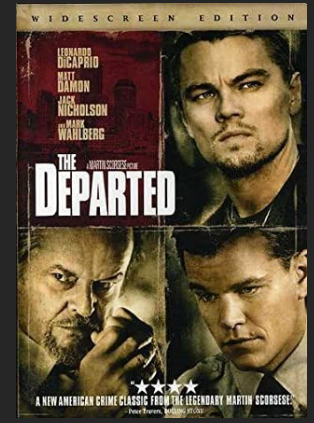
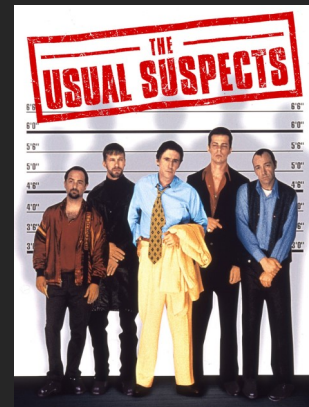
A Magician and an unscrupulous businessman team up for a heist that turns into a magic trick and an illusion itself. It’s a battle between traditional magic vs digital magic.



REFERENCES

This film is the Ocean's Franchise (the heist) crossed over with The Prestige (the magic), the Joker (delusions of the mind vs reality concept) crossed over with the Usual Suspects and the Departed (the twists that keep you guessing) while encompassing a new surprise element.

This film combines all the excitement of a heist with con artistry, magic and hypnosis creating a delusions vs reality concept which has never been done in a film before. It keeps you guessing on who is really the protagonist and antagonist of the film as you are teleported into another world filled with magic, mind-boggling twists and turns.



SYNOPSIS

Crime/Action/Thriller/Drama

The theme of the film is the choice between love (The Queen of Hearts) and power (The Ace).

The film opens up to a magician performing on stage with his assistant where the Magician does a disappearing act. While the audience watches, the Magician and Assistant are locked in a box that is lit on fire. The Magician and Assistant manage to disappear from within the box reappearing elsewhere on stage wearing completely different outfits. The Magician then shows the audience how magic works, telling the audience that he uses misdirection. He reveals that the things he emphasizes as the most important are actually the least important and the things that seem unimportant to the audience are the things that end up being the most important by the end of the trick . After revealing the force, he then magically turns the Queen of Hearts into an ace right before their eyes just as the Assistant's costume changes from red to black.

Behind the scenes, the Magician is in a relationship with the Assistant. A mysterious man enters the magic parlor and introduces trouble to the couple. The mysterious man who calls himself "The Artist" offers the Magician a deal. The Magician and the Artist ultimately decide to work together in a heist to obtain a valuable painting from a highly secured location: the Museum.

Elsewhere police are making a lot of arrests for various crimes throughout the city due to self confessions on video. Many arrested suspects express confusion that they don't remember committing the crime or self confessing on camera. Many claim to have been hypnotized.

In planning for the heist, the Artist informs the Magician that he works in the surveillance business and is able to manipulate cameras from other security companies for his benefit. However it is later revealed in his backstory that he is actually a mastermind hacker who created software that can make it look like anyone anywhere committed a crime. His uses this software to blackmail people in crimes committed by himself.

The Magician and the Artist continue to plan their heist and in a twist of events, it is revealed that the Assistant worked for the Artist the entire time. The whole plan was actually a setup to steal valuable diamonds that were hidden behind the painting and to have the Magician take the fall for the heist. The Artist eventually shows his true demeanor that he controls the Assistant through manipulation of video surveillance . A fight breaks out with magic effects. Seemingly submissive/controlled by the men around her, it is revealed the Assistant has learnt tricks from both the Artist and the Magician (digital and traditional magic) and have some tricks of her own.

Just like the beginning of the magic trick, the Magician had turned his queen into the ace with many more surprises and twists to come.

CHOICE YOUR OWN ADVENTURE STYLE ENDING!

Do you choose love (Queen of Hearts) or power (Ace of Spades)?

CREATIVE STRUCTURE

This film is structured very differently from other film experiences in that it is structured like a magic trick. This is an incredibly deep story with many hidden messages where the audience will get a different outcome depending on what they themselves are going through in the moment of watching the film.

THEME, SYMBOLISM AND CHOICE

The theme of the movie is the choice between love (The Queen of Hearts) and power (The Ace). Good and bad, light and darkness. Everyone has a choice to choose either in life. Depending on each individual audience's choice, the ending of the film can be interpreted in two different ways.

The Assistant's wardrobe also changes colors depending on whether she is choosing love or power in the moment.

DEEP CHARACTER DEVELOPMENT

The Artist (Cons for Power) - Realizes at the end when he has lost all power that he had lost humanity long ago.

The Magician (Cons for Money - later reveals it's for Money and Revenge) - Realizes love is more important to him than money by the end of the film.

The Assistant (Cons for Revenge) - Realizes that she doesn't have to be alone in her quest for revenge that she can trust and even love again by the end of the film.

Note: SPOILERS (please skip this slide if you don't want spoilers):

THE OPENING MAGIC TRICK

- In a magic trick, the parts that seem unimportant to the audience during the trick sometimes ends up being the most important part of how the trick works. Just like a magic trick, the film is structured in the same way that what seems most important in the film ends up being misdirection and the parts that seem unimportant will reveal itself by the end of the film.
- In the opening magic trick, the Assistant changes costumes when she reappears just like how she is a different person when she reappears in the full feature after her disappearance.
- The Assistant is dressed in an Asian costume when we first see her. The colors of the costume (red, black and gold) matches the colors of the Queen of Hearts in the deck of cards therefore subtly implying she is the Queen and after the trick is complete, she is in a different costume altogether similar to the Magician's follow-up trick of turning his card from a Queen into an Ace.
- Queen symbols on the Assistant's dressing table, Asian Costume at the beginning looks like a Queen of Hearts costume.
- Magician's explanation of how magic works in the opening scene is in line with how the whole movie works.
 - "You use misdirection and everything you have to distract the audience from where the real trick is taking place."
 - "The parts that I emphasis as important are the parts that are least important, the parts that I treat as unimportant are the parts that are the most important."
 - "Just like a magic trick, there are things that happen right in front of you that you see, there are things that happen in front of you that you don't see and then finally...there are things that you never see coming until the whole trick is complete. Remember who has the ace and who has the queen? Nothing is as it appears to be."
- The Ace is the Power Card in most games and the Queen of Hearts represents love to many people.
- Throughout the whole movie, it looks like different characters have the Ace and we mostly think the Artist has the Ace (The Power Card). In the end we realize the Queen really is the Ace and the Magician has the Queen.

Note: SPOILERS (please skip this slide if you don't want spoilers):

INTERPRETATIONS:

- Interpretation 1: The audience chooses love.
The Artist is hallucinating and delusional suffering from possible PTSD and mental illness while in jail for his past crimes. He tries to deal with the mysteries of his past to self heal through hypnotherapy and he projects images of the woman he lost/love onto the nurse assigned to attend to him. He learns what he has done wrong. Along the same lines the Artist could also be hallucinating as he is high on drugs like LSD and has engaged the hypnotherapist to help him get over his drug addiction, an addiction that has caused him to lose everything in his life including the love of his life where he engaged in crimes in order to pay for his drug addiction.
- Interpretation 2: The audience chooses the balance between power and love, good and bad.
The Artist is a diabolical evil man who threatens the Magician and dominates the Assistant denying her of any freedom. He wreaks havoc over many lives with his deepfake videos pinning crime after crime on innocent folks. The Magician loves the Assistant and helps to protect her by framing the Artist for a crime that he is being threatened with. He uses hypnotism to control the Artist in order to help the Assistant gain back her freedom.
- Interpretation 3: The audience chooses straight up power.
The hidden message as the Magician says "The parts treated as the least important are the parts that are the most important". In the beginning the Assistant is brushed aside, seen as a submissive Asian exotic party favor who is powerless and is only there as fluff on the stage. She sheds the traditional Asian garments that are donned on her by society and becomes her own person. As the Magician says in the opening scene " Nothing is as it appears to be" and "Remember who has the ace and who has the queen". The Assistant is the one with the Ace in the end so she had the power all along. It can also be interpreted that she has power over both men as she hypnotized the Artist and the Magician always says that she has already hypnotized him.

Note: SPOILERS ahead

LINKS

The Painting

- At the beginning, the question is stated “what is the Artist's true intention? What is "she" really thinking? What is behind the painting?” It is revealed throughout the story that the mysterious man/narrator in the beginning asking these question are really also in parallel asking about the characters in the film and their intentions rather than the painting itself.
- 3 Parallel Layers of the painting – Different layers just like the theme of the movie, every person has two sides - layers, what are their true intentions?
 - Layer 1 - Breaks into vault to find the painting behind the vault door.
 - Layer 2 - Breaks into a painting to find jewels planted behind the painting.
 - Layer 3 - Breaks into vault that is behind the painting.

THE CHARACTERS

The Magician

The protagonist of the film. Tall, mid-30s, charming and handsome. He is wide-eyed, kind-hearted and mean wells although money is his flaw but not for the reasons we think. Despite his innocent looks, he comes from a dark past that haunts him. He seems to be a good all American guy who is just trying to make ends meet by bringing in money to support the ones he loves. He is an orphan, having lost both of his parents at a young age. He spent a good part of his teens pick-pocketing and working odd jobs in order to take care of his younger sister. His sister eventually leaves him as she wants more for herself. This leaves him feeling abandoned and insufficient in providing for her which drives him to complete bigger jobs - the original painting heist in order to bring her back home from the trouble she is in. The success of the heist was noticed by the Artist who approaches the Magician to help him complete another job. The Magician is emotionally unavailable since his past haunts him - the death of his sister. He is in love with the Magician's assistant and will do anything for her. He dabbles in hypnotherapy.



MATTHEW PALUMBO

Matthew is an actor/producer based out of Los Angeles, having studied with some of the top coaches and teachers in the nation; Larry Moss, Bob Krakower, William Esper. He is currently producing/acting in two short films, "Matthew" directed by Matt Servitto (Sopranos, Billions), and "Duplicitous Minds" directed by Robert Rippberger. In the past few months he has also acted in numerous shows/films including, "Pandemic Pillow Talk" and "Exemplum". He is currently seen on numerous national commercials and advertising campaigns for HP, Peloton, Stella Artois, Shop Right, Chubb, numerous clothing brands. Matthew is currently in process for his feature documentary about the destruction of the Amazon rainforest. He has also starred in numerous New York theater productions, including the Hudson Warehouse production of *The Man in the Iron Mask*. In recent years he has travelled philanthropically to Peru, Uganda, Kenya, Tanzania, and also Thailand, and Hawaii, having documented his travels.



THE CHARACTERS

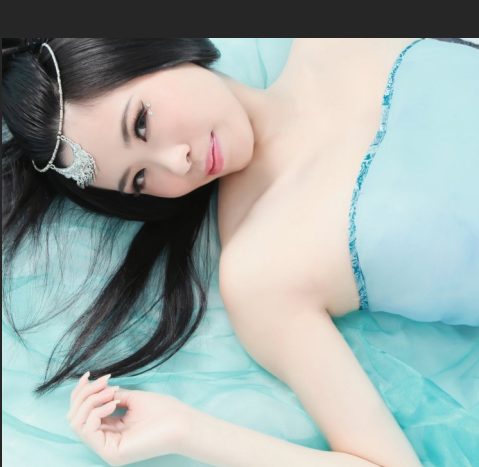
The Assistant

Loving and Warm-Hearted, Bubbly, young, slim, attractive with long raven hair. She is the magician's love interest but looks are not always what it seems. The love interest of both the Magician and the Artist which causes friction between the two characters. She is the Magician's support system however in the middle of the script, it is revealed that she works for the Artist due to his threats and videos of her. Seemingly submissive/controlled by the men around her, it is revealed she has learnt tricks from both the Artist and the Magician (digital and traditional magic) and have some tricks of her own.



CATALINA YUE

Catalina is an actress, producer, model, singer, martial artist and a former delegate in the Miss Universe Canada pageant. Born in the heart of downtown Toronto, Catalina grew up in Canada and graduated from University of Waterloo, majoring in Political Science in the Arts and Business Program. She began her career in the music industry. For her debut album, she partnered with the UN Office of the High Commissioner for Refugees (UNHCR) of Canada, a United Nations agency mandated to protect and support refugees, where Angelina Jolie also serves as an UN Ambassador. Catalina's album, Eternally, was released internationally in HMV Stores with proceeds going towards protecting refugees worldwide. She fell in love with being on set after the shooting her music videos and has since been on billboards, magazines, national commercials such as McDonald's, IMAX, films like "The Great Chameleon" starring Stacy Keach and Robert Davi, the award winning Canadian series "Out of Time", Discovery Channel's "Project Afterlife" and more. She's also been a producer and project manager for the Grammy Awards, the Out of Time series and many other projects earning her a US green card. Catalina is also a member of the producer branch of the Television Academy.



THE CHARACTERS

The Artist

Good-looking in a dark brutish way. The antagonist of the film, rugged and handsome in an unconventional way, charming but corrupt as what drives him is power and money. He loves and abuses his power over the Magician's Assistant. He owns a security camera business at least on the surface but he is the mastermind behind the new deepfake artificial intelligence software that he uses for evil intent. He is really a rich mob boss and he enjoys collecting expensive Art.



ROB LACOLLA JR.

Rob LaColla, Jr. is an American actor and musician, born in Dutchess County, New York. Rob was very involved in music and theatre at a young age within his community. He began drumming at the age of 3 by playing percussion in the church choir, and broadened his interest in the arts when he starred as Prof. Harold Hill in his elementary school's rendition of "The Music Man" at the age of 13. He continues to pursue his dream of becoming a professional actor and musician. Rob's latest achievement came at the 2021 Beverly Hills International Film Festival. Rob played one of his first dramatic lead roles in the short film "Blue," which won the "2021 Audience Award" for "Best Short Film."



THE CHARACTERS

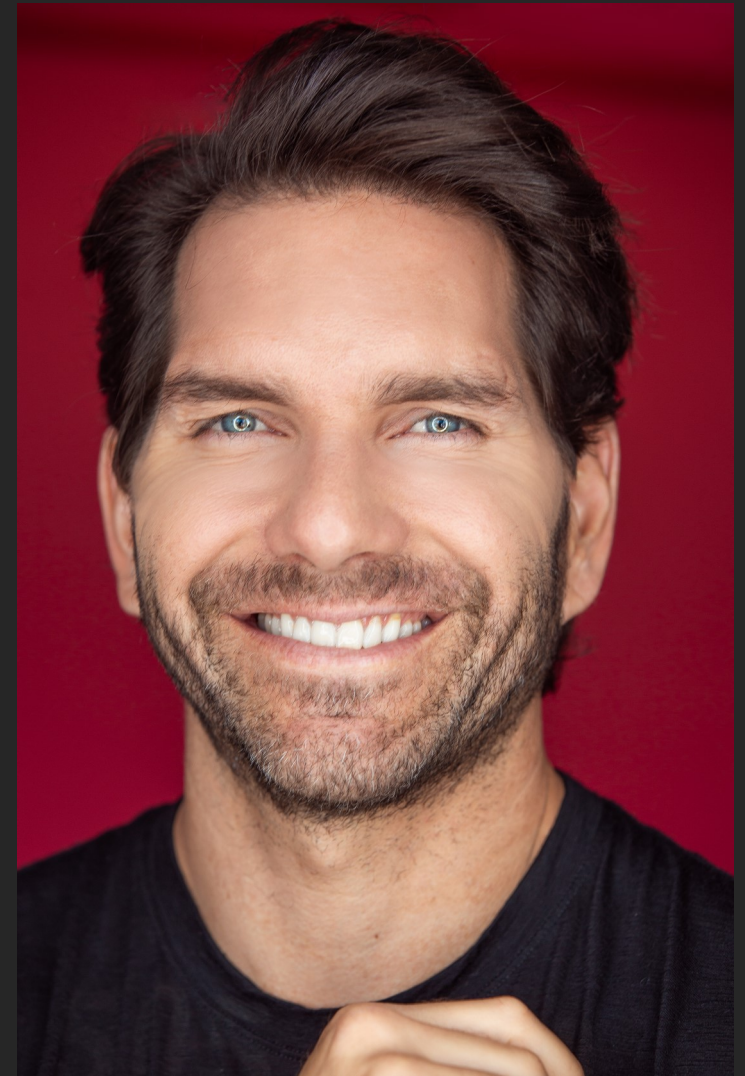
The Benevolent Cop

He is reliable and intuitive with a strong moral compass. He always tries to do the right thing despite the odds stacked against him. He is investigating the Artist as he is the prime suspect in many unsolved crimes taking place around the city.



ARAP BETHKE

Born in Nairobi, Kenya, and raised in Mexico City, Arap considers himself aglobal citizen. His acting career began at a young age, in Televisa, Mexico, where he participated in various TV dramas and started training as an actor. After completing a Bachelor of Arts in Media and Cultural Studies in McQuarie University in Sydney, he decided to pursue a full time career as an actor. He soon landed starring roles in various Telemundo productions, such as Doña Barbara, Los Victorinos, La Diosa Coronada, and more recently, Eva La Trailera opposite latina super star Edith Gonzalez. After working in Miami, Los Angeles and Colombia, Bethke returned to Mexico to shoot 8vo Mandamiento an acclaimed political thriller with Argos Productions. This series rekindled his career in Mexico, where he then starred in dramas and comedies alike, such as Amor Cautivo and Corazon en Condominio, in prime time for Azteca TV. Based on his critically acclaimed performances in television and theatre, in 2015 Gary Alazraki (Nosotros los Nobles) engaged him to play the role of “JP Iglesias” in the hugely successful Club de Cuervos, for Netflix. This was the streamers first show produced in Latin America, which currently wrapped its 4th and final season. In 2017 Bethke starred in the critically acclaimed and hugely popular La Piloto, produced by The Lemon Studios both for Televisa in Mexico and Univision in the U.S. where he plays a mainstream action antihero. This project proved to be a commercial success around the world. It is currently in its third run on Netflix. Arap’s first film, which he costarred with Diego Luna was Un Dulce Olor a Muerte. He also costarred in the romantic comedy Enamorandome de Abril, and appeared in Instructions Not Included, written, directed and starred by Eugenio Derbez, which made over 100 million in box office worldwide distributed by Lionsgate. This year, Sin Origen a sci-fi thriller will come out in theatres across Latin America.



THE DIRECTOR

ROBERT RIPPBERGER

Robert Rippberger is a filmmaker with a broad array of creative and executive experience. He most recently directed and produced the Harlem drama, 'Strive,' with Danny Glover released theatrically and through AMC's Urban Movie Channel, as well as the war on drugs documentary, 'Public Enemy Number One' from Executive Producer Ice-T.

In 2016, Robert directed/produced the documentary "7 Days in Syria," a look at the human side of the war in Aleppo. The film was championed by Angelina Jolie, screened at Britain's House of Lords, to senior members of the U.N., and was released on Hulu and Amazon.

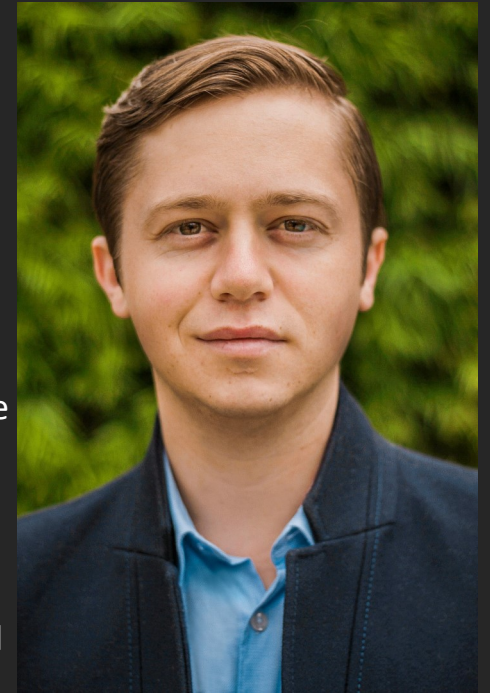
Robert went on to executive produce with Jason Blum the feature doc, "Alive & Kicking." The film was sold to Magnolia Films after its debut at the 2016 SXSW Film Festival where it received a Grand Jury nomination. The film is available on Netflix.

In 2006, Robert formed the production company SIE Films, a philosophy term used to describe a disclosing of truth, with a view to make entertaining and impactful films for mass audiences. He was the 2012 recipient of the Dan Eldon Activist Award.

Robert received a Bachelor of Arts in Philosophy from UC, Berkeley in 2012 where he was awarded the Eisner Prize for his film "In the Middle." It is considered the highest achievement in the creative arts given on the UC, Berkeley campus.

Across animation, documentaries, features, music videos, and commercials, Robert has extensive experience from development to delivery throughout North America and Europe. He is a member of the Producers Guild of America and is on the PGA's Social Impact Entertainment Task Force. In addition to SIE Films, Robert is also president of FinalMation Studios, an animation studio founded with Ice-T and others.

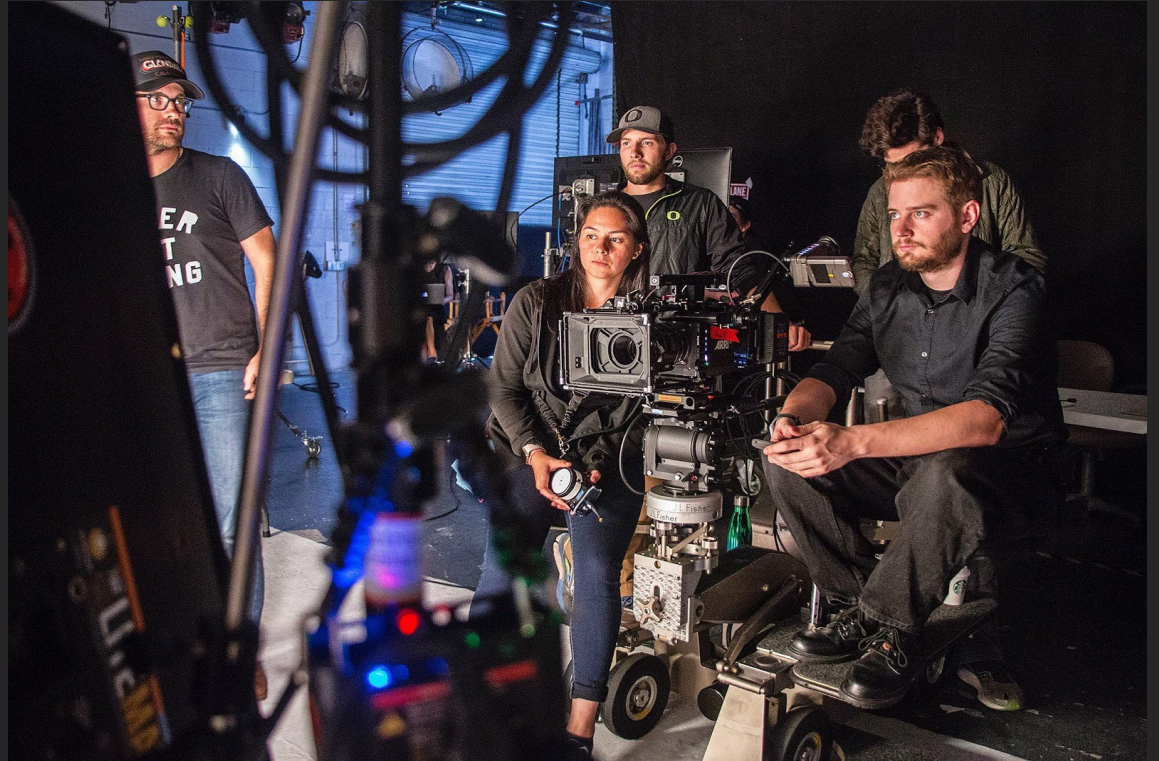
<https://www.imdb.com/name/nm3163495/>



DIRECTOR OF PHOTOGRAPHY

SEAN EMER

Sean Emer is an LA based cinematographer who has been shooting films internationally for over a decade. In 2019 he was selected as one of the first members of the ASC Mentorship program, and has spent recent years building a career centered around engaging storytelling, powerful visuals, and positive social impact.



His workspace is broad, and includes everything from traditional narrative films to music videos, television documentaries, web series, branded content, healthcare documentaries, and stand up comedy specials. While not behind the camera, he is a private pilot, SCUBA diver, and avid computer geek.

<https://www.imdb.com/name/nm3177612/>

PRODUCTION TEAM

PIXIE ENTERTAINMENT

EXECUTIVE PRODUCER

SARI COLT

Sari is executive producer of "The Martini Shot" starring Matthew Modine, John Cleese and Derek Jacobi. Other films she has executive produced include the short films "The Escape Games, "Tomer the Wrestler", "Tea Time" and " The Art of Kissing".

She has also directed the short films "The Last Decision", "Tomer the Wrestler" and "Tea Time". As an actor, Sari has appeared in the horror feature "Black Eve", the tv series "Final 24", "The Real Treasure Island" and "Accident Investigators".

Sari co-hosted and produced the web talk show "ENT World, Covering the World of Entertainment". Her theater experience includes appearing on stage in her autobiographical one person show " Barely Surviving My Jewish Family" and has performing standup at the Laugh Factory, LA and at Yuk Yuks, Toronto. A graduate of Schulich School of Business (Toronto), Sari also comes from a family of entrepreneurs.

<https://www.imdb.com/name/nm2858911/>



PRODUCTION TEAM

PIXIE ENTERTAINMENT

PRODUCER/WRITER

CATALINA YUE

Catalina has produced for film, TV and digital media. Born in the heart of downtown Toronto, Catalina grew up in North York and went to college at the University of Waterloo, majoring in Political Science in the Arts and Business Program. She's also been a producer and project manager for the Grammy Awards show, the Out of Time series and many other projects where she earned her US green card. Catalina is also a member of the producer branch of the Television Academy (Emmys). More recently, she partnered up with Sari Colt to create Pixie Entertainment with Escape Games and Duplicitous Minds being the first projects for the production company with a few feature films underway. Catalina is also a member of the producer branch of the Television Academy (Emmys).

<http://www.imdb.com/name/nm4966891/>



CONTACT INFORMATION

Pixie Entertainment Inc.

416-520-2014

pixieentertainmentinc@gmail.com

