



# MRS BENZ

VOYAGE OF DISCOVERY

SINGER  
STUDIOS



## Mrs Benz Interactive VR experience

Experience the immersive, interactive story of a pioneering woman who undertook the World's first road trip and changed the course of history.

## Setting up Mrs Benz on PC

Mrs Benz project is an exe file that needs to be downloaded to a PC and played through a tethered Quest 2 headset.

This project will need:

- **Quest 2 Headset with a Singer Studios branded mounting strap**
- **Meta Link cable (5m+)**
- **Headphones with a 3.5mm jack**
- **VIFF PC**

If downloading files from Nextcloud:

1. Please go to Nextcloud log in and find folder **'Singer Studios: Mrs Benz Delivery'**
2. Download the folder **'Mrs Benz August 2022'** to the PC desktop. Inside this folder will be a folder name **'Windowsnoeditor'**
3. Please download the **whole** folder and save on to the local PC desktop. There will be a file inside this folder that needs to be 'extracted'. (downloaded)

**'Benz\_New'** is the exe file to be extracted.

Please double click on this **'Benz\_New'** and agree to 'Extract All' when the window asks.

The file will look like this before 'extraction'

Name	Type	Compressed size	Password p...	Size
Benz_New	File folder			
Engine	File folder			
Benz_New	Application	75 KB	No	142 KB
Manifest_DebugFiles_Win64	Text Document	1 KB	No	2 KB
Manifest_NonUFSFiles_Win64	Text Document	1 KB	No	3 KB

And this after extraction: i.e an Unreal project file

Name	Date modified	Type	Size
Benz_New	19/08/2022 13:54	File folder	
Engine	19/08/2022 13:54	File folder	
Benz_New	19/08/2022 13:54	Application	142 KB
Manifest_DebugFiles_Win64	19/08/2022 13:54	Text Document	2 KB
Manifest_NonUFSFiles_Win64	19/08/2022 13:54	Text Document	3 KB

To open this project file:

1. Turn on the Quest 2 headset and connect it to the PC via **Quest Link**.
2. Ensure the Oculus App is downloaded on the PC. Open the Oculus App.
3. Ensure Unreal v 4.27 has been downloaded on the PC
4. Click the project file 'Benz\_New' exe file above.
5. Experience should now load in the headset.

The Quest 2 needs to be connected to the PC using a USB-C Power cable.



# Onboarding The Audience

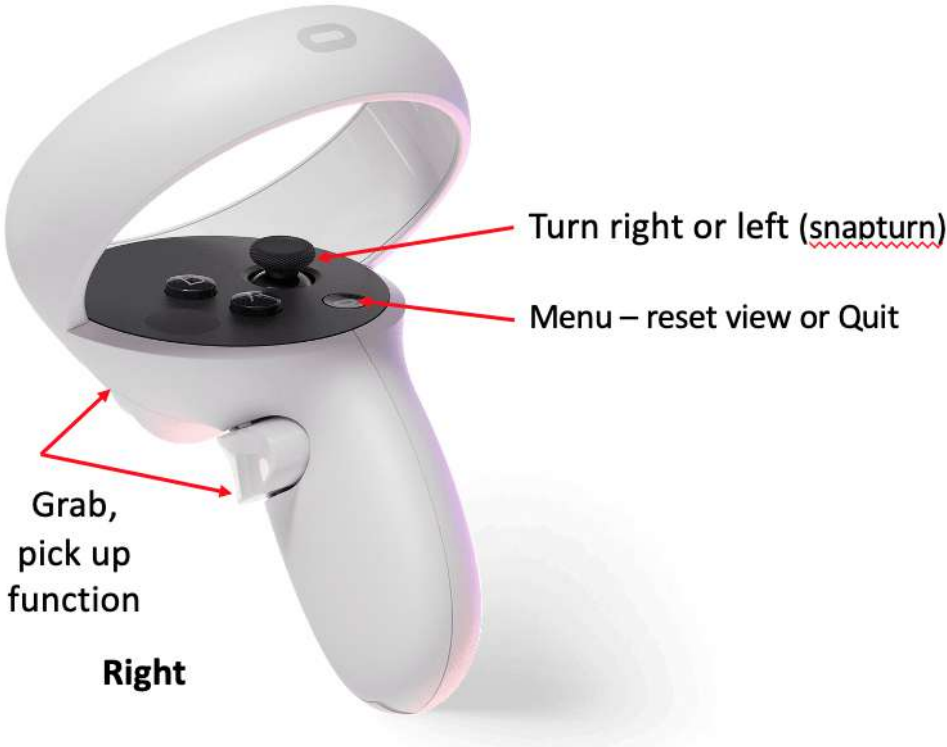
Please welcome the audience into the space and ask if they have experience of VR?  
If they are new to VR please offer the following support below:

Get into the VR Headset

- Hygiene wipe of equipment between audience members
- Adjust Eye piece if needed
- Adjust headband if needed
- Use headphone for immersive sound



## How to use Right and Left Hand Controller



Move forwards (teleport)

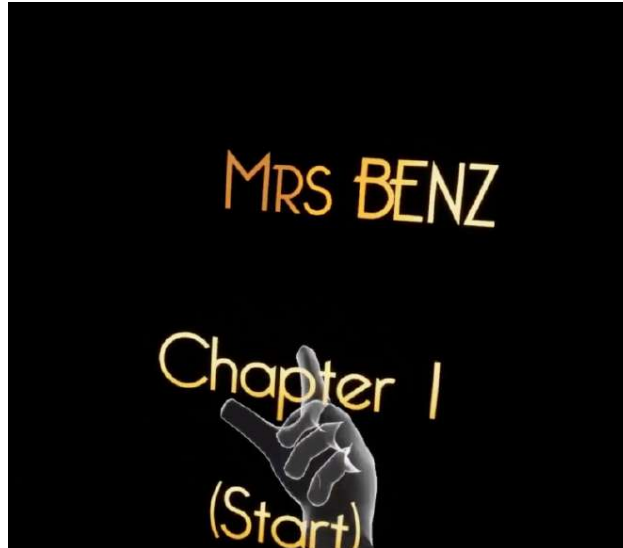


Grab,  
pick up  
function

Left

## Mrs Benz Controls [For the Docent]

Click on the 'Mrs Benz' file to ensure the project is open and on this start screen:



Shortcuts programmed into the keyboard, click these keys:

### To start the experience

- "spacebar" = start the experience

### To start the experience click

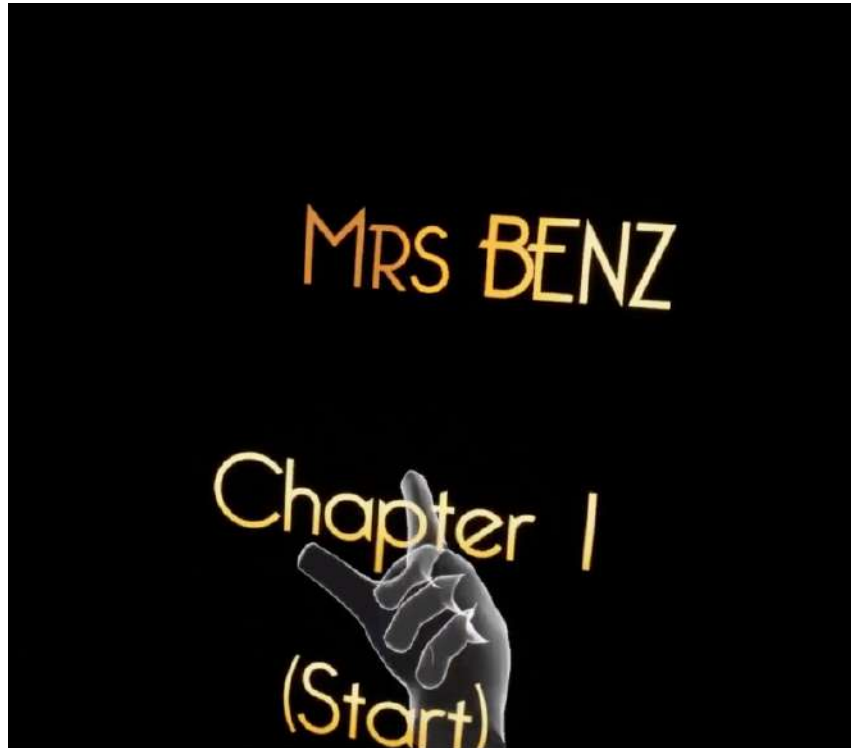
- "r" = restart

### To re-center the player:

- "c" = recenter the zone / re-calibrate with the headset being at the middle of the zone

# Mrs Benz User Journey

The User Journey: A Step by Step guide



1. **Grab the Start button to start story.** Then a dark screen with sound only sound and text will appear.



2. Then is the Benz's office. Directly in front of you is a magic lantern that has been left on. Turn on the magic lantern for the 3-D photorealistic animated cutscene to begin.



3. After the cutscene our character reveals what is at stake and what needs to be done. Turn towards the desk and locate the puzzle box. Turn the cogs to open the box.



4. Whilst every object tells part of the story, only one story item in the box is mandatory – the typewriter key. Pick up the missing typewriter key and find a typewriter nearby



5. Slot the missing key into the typewriter and discover a hidden letter on top of the typewriter.



6. Unfold the letter and read the code 406 which reveals where your partner has hidden the item for safekeeping.



Find a newspaper article on the bookcase.



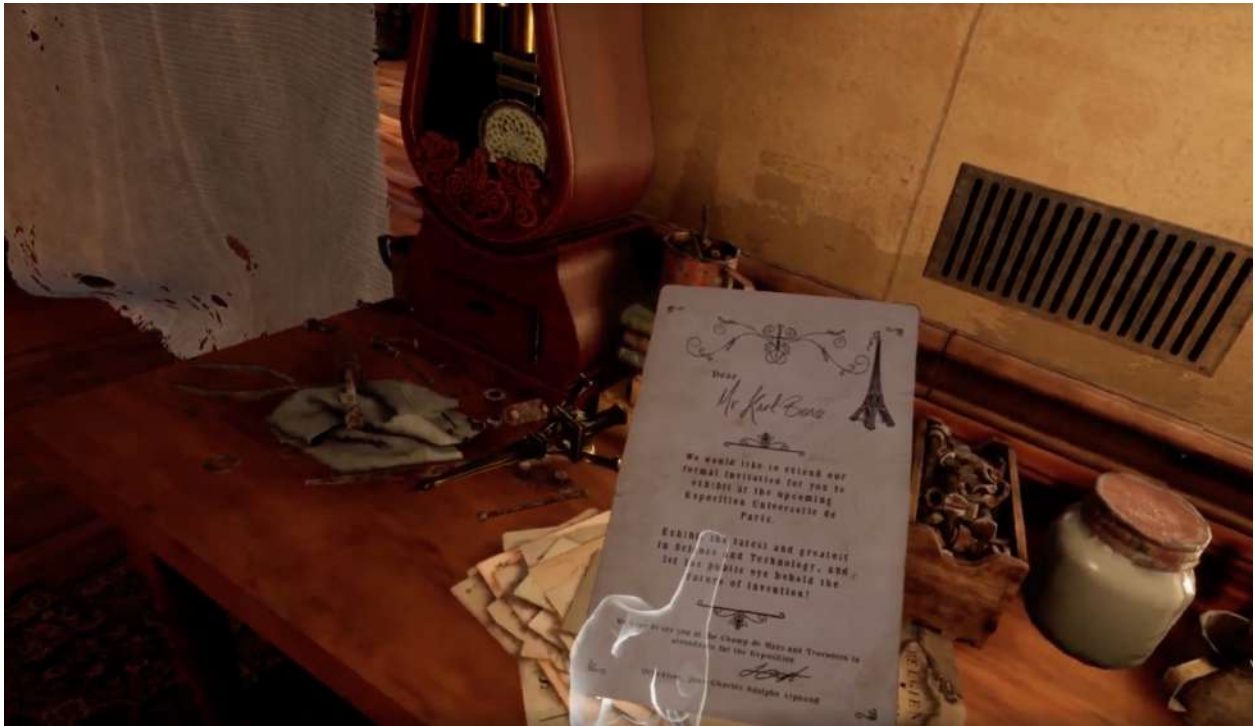
8. You are prompted to throw the newspaper into the fire, the gust of heat and smoke blows paper off a corner desk behind you.



9. Head to the corner desk and pick up the Eiffel Tower statue.



10. Underneath the statue lies an important invitation. There is a key underneath this invitation.



11. Use the key to wind the miniature grandfather clock which opens a secret drawer



12. In this drawer, find the blueprints that allow us to fix our beloved car.



13. Go through the curtain with a sweep of the arm and move into the workshop.

Assemble the car's engine by picking up the large engine wheel lying underneath the workbench nearby.



14. Locate the engine cog, which further along on the same workbench and fit into engine.



15. To place the engine into the car by attaching the hook above head. Use the crane to move the engine onto the car.



16. Lower the engine into place.



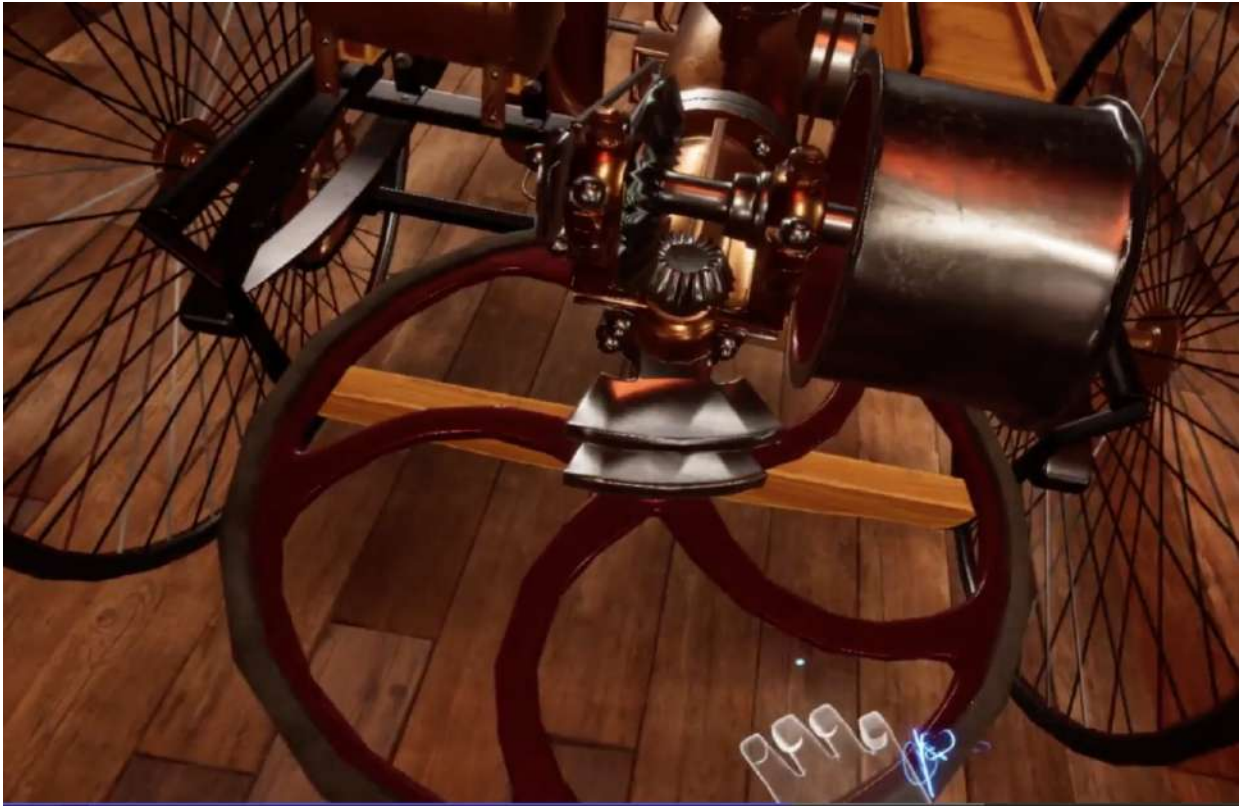
17. As you manoeuvre the engine into place, the wheel falls off the car. The sound wakes up Karl – in a rush, quickly put the wheel back on!



18. It's time to get out on the road. Move towards workshop doors to open them. Grab the handle and slide the workshop open to reveal the outside world.



19. Move back to the car and quickly start the engine by turning the engine wheel. With a firm pull tug, start the engine.



20. You are then teleported into the car. Pull the accelerator handle to get the car moving and steer the car out of the workshop





22. Take the Scenic route or the shortcut to Paris.



23. Arrive at a stage where the car sits centre stage. We need to turn the lights up so people can see properly.



24. You did it. You got the car to Paris.  
Hear people's reaction to the brilliant new invention of the world's first car.



Closing VO & title card.

Fade to black.