



*A Train  
Ride Away*

A FILM BY **LAUREN SCHWARTZBARD**

**ANNIE BARSON STEVEN GAMBLE ALANA HILL**





# A TRAIN RIDE AWAY

*Running Time:* **13 minutes 28 seconds**

*Directed By:* **Lauren Schwartzbard**

*Written By:* **Lauren Schwartzbard**

*Produced By:* **LeNia D. Samuels**

**Lauren Schwartzbard**

*Edited by:* **Chris Webber**

*Cinematographer:* **John Targowski**

*Composer:* **Gordon Snyder**



# LOGLINE

When a young woman fails to fly under the radar, her hometown visit reunites her with the past in more ways than one.



# SYNOPSIS

Jordan Bohn returns to her hometown after several years away and immediately runs into her old flame, Ryan Smith. He convinces her to join him at the diner they used to frequent. His new girlfriend, Sophie Pilar, interrupts their conversation and reminds Jordan about her abusive father. Jordan lashes out at Ryan for betraying her trust and is left alone in a town she doesn't belong to anymore.





# DIRECTOR'S STATEMENT

This script flowed from a moment of reflection while visiting my hometown over winter break during my junior year at Temple University. I was in contact with an ex-boyfriend while waiting for a train and that became my inspiration.

*A Train Ride Away* tells the story of a young woman forced into confronting her past and why what could have been can never be. The protagonist, Jordan Bohn, fled her hometown to escape the memories of her abusive father. She left her mother and boyfriend, Ryan Smith, behind. After growing estranged from her mother and ending things with Ryan, Jordan only returns for a weekend due to her mother's need for a caretaker. She is not expecting to run into Ryan at the train station and then sparking old flames.

I envisioned the script as a rom-com, but what came to me was bittersweet. Ultimately, I realized the story I had to tell focused more on recovering from an abusive past and building boundaries versus a romanticized re-do of the past. I produced a new character, Sophie Pilar, as Ryan's new girlfriend who represents Jordan as she could have been. It is human nature to wonder "what if" about our lives and in the film, Jordan runs headfirst into an alternate reality and an alternate persona.

# DIRECTOR'S STATEMENT CONT.

Although Ryan comes into the story before Sophie does, the story is a competition between women. Despite them being at odds, the film aims to find empathy for women in the film. Initially, you're meant to think that Ryan is a good guy who got stuck with a snobby new girlfriend. However, the story progresses, and it is revealed that he betrayed Jordan. This causes him to lose his ex for good and puts his new relationship on rocky ground as he is no longer trustworthy.

Hence, the villain in the film is Ryan, not Sophie. A secondary villain in the story is Jordan's father. Although he makes no appearances in the film, the taint he left on his daughter and her hometown ruined her past and will impact her future forever. The film is an indictment of men for attacking women which includes failing to protect them.

When I started writing, I had no experience with physical abuse or threatening scenarios. Unfortunately, I do now, so my revisions come from a very personal and resonant place as I poured my feelings into the script.

As much as we can, we strive toward empathy without direct experiences and aim to put ourselves in the shoes of others to understand. This is critical for painful situations like physical abuse which is incredibly isolating. Films aid in building empathy and connectivity. *A Train Ride Away* will give women a chance to be seen, reflected in the media, and feel less alone.





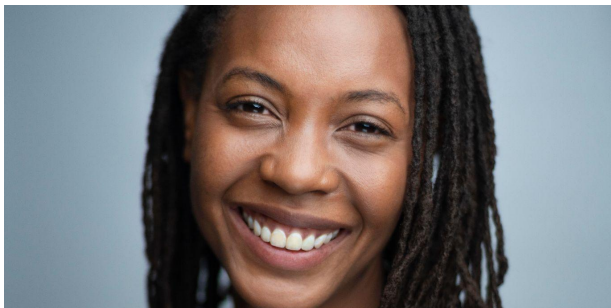
## Annie Barson as ***Jordan Bohn***

Annie Barson is a Philadelphia based actress who has starred in several short films and productions. She studied film and media studies at NYU, and graduated in 2020. She is excited to have portrayed Jordan Bohn in *A Train Ride Away*, and is excited to see the finished product!



## Steven Gamble as ***Ryan Smith***

Steven is thrilled to be in the cast of "A Train Ride Away," and to work with such a talented, dedicated cast and crew! He is originally from Charlotte, NC and graduated from UNC-Wilmington with a BA in Film Studies and minor in Theater. He lives in Brooklyn, New York and has been in supporting/lead roles on stage and screen.



## Alana Hill as ***Sophie Pilar***

Alana Hill studies at Playhouse-West Philadelphia and is honored to be working with Lauren Schwartzbard again after starring in her film, *A Paid Connection*. Alana is always broadening her horizons by working on several short films and is in the midst of a burgeoning career as an actor.



## Heather-Ashley Boyer as *Hostess*

Heather-Ashley Boyer is currently a Philadelphia and New York based actress studying at Playhouse West. She is also passionate about dance and music and graduated from Cornell University and has a certificate in music studies from Berklee College of Music. She is looking forward to continuing her journey as an actress in productions for film, TV, and stage.



## Gianna Turner as *Young Girl*

Gianna Turner is 13 years old and has been acting since she was 5 years old and hopes to one day to work in the entertainment industry as a full time actor. For fun, she plays lacrosse and field hockey along with horse riding and show jumping.



# DIRECTOR, Lauren Schwartzbard

Writer, director, and producer Lauren Schwartzbard is a Philadelphia and New York based independent filmmaker hailing from South Orange, New Jersey. She is currently a senior studying Film & Media Arts with a Directing Concentration at Temple University. She identifies as a storyteller above all else and loves learning about the world through the films she watches and experiences.

<https://laurenelizabetschwartzbard.com/>



## **PRODUCER, LeNia D. Samuels**

Producer LeNia D. Samuels is an American Independent Filmmaker based in Washington D.C. and Philadelphia. Samuels attends Temple University where she is pursuing a BA in Film and Media Arts with a concentration in Producing. Samuels produces films that focus on issues within the LGBTQ+ community and mental health issues.



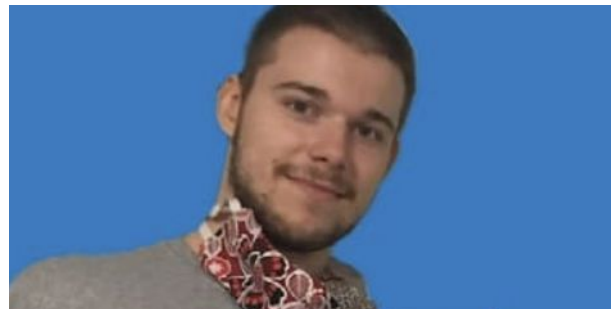
## **CINEMATOGRAPHER, John Targowski**

John Targowski is a senior at Temple studying Film and Media Arts with a concentration in Cinematography. He has a background primarily in experimental film, documentaries, and video art.



## **EDITOR, Chris Webber**

Chris has been an editor for the past 5 years as well as pursuing a degree in filmmaking with a concentration in Post-Production from Temple University. He specializes in editing and color, and is looking forward to building a career as a narrative or documentary editor.





# A TRAIN RIDE AWAY



THE GOOD GEMINI FILMS PRESENT A FILM BY LAUREN SCHWARTZBARD • "A TRAIN RIDE AWAY"

STARRING ANNIE BARSON STEVEN GAMBLE ALANA HILL • DIRECTOR OF PHOTOGRAPHY JOHN TARGOWSKI • EDITOR CHRIS WEBBER

PRODUCTION DESIGNER JESSICA McNAMARA • MUSIC BY GORDON SNYDER • EXECUTIVE PRODUCERS JANET AND MICHAEL SCHWARTZBARD

PRODUCED BY LENIA D. SAMUELS AND LAUREN SCHWARTZBARD • WRITTEN AND DIRECTED BY LAUREN SCHWARTZBARD

# PRAISE

**Official Selection:** Playhouse West Film Festival - Philadelphia 2022



# CREDITS

*Directed by:*

**Lauren Schwartzbard**

*Written by:*

**Lauren Schwartzbard**

*Produced by:*

**LeNia D. Samuels  
Lauren Schwartzbard**

*Director of Photography*

**John Targowski**

*Production Designer*

**Jessica McNamara**

*Editor*

**Chris Webber**

*Music by*

**Gordon Snyder**

*Production Sound Recordist*

**Spenser Spratlin**

*Executive Producers*

**Janet & Michael  
Schwartzbard**



# CAST

*Jordan Bohn*

*Ryan Smith*

*Sophie Pilar*

*Hostess*

*Young Girl*

*Father Figure*

*Waitress*

*Extras*

**Annie Barson**

**Steven Gamble**

**Alana Hill**

**Heather-Ashley Boyer**

**Gianna Turner**

**Joseph Grosso**

**Olivia Basile**

**Greg Tucker**

**Darrin J. Daniels**

**Korissa Turner**

**Michelle Schwartzbard**

**Nicole Schwartzbard**

**Mercy Bush**



*Assistant Director:*

*Script Supervisor:*

*1st Assistant Camera:*

*2nd Assistant Camera:*

*Grip:*

*Still Photographer:*

*EPK:*

*Gaffer:*

*Art Department Assistant:*

*Digital Colorist:*

*Sound Designer:*

*Title & End Credits*

*Graphic Design by:*

*Insurance:*

*Camera & Grip Equipment:*

*Lighting Equipment:*

**Aisha Torres**

**Isaac Jentzen**

**John Tuohy**

**Adam Harel**

**Greg Taylor**

**Victoria Wilcox**

**StudioBinder**

**Greg Taylor**

**Nicole Schwartzbard**

**Chris Webber**

**Jake Coyle**

**Chris Webber**

**Stephanie Dolberg Designs**

**Temple University**

**Temple University**

**Temple University**



