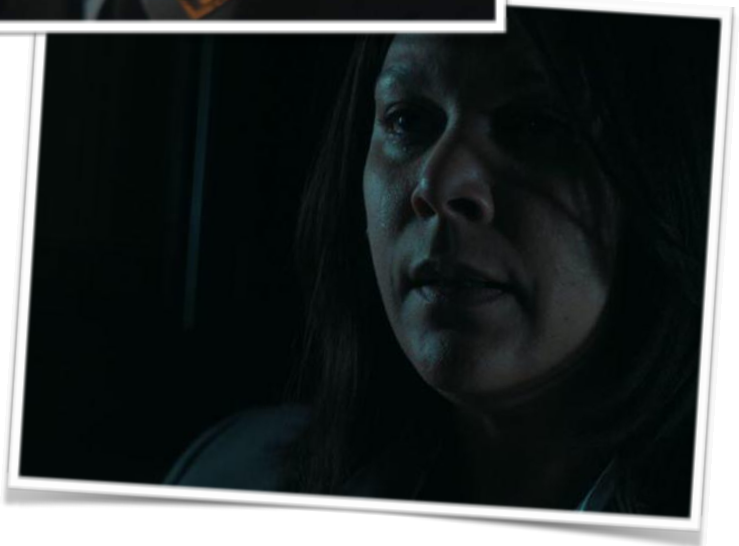


EXPOSITION GIRLFRIEND

a film and theater
production company



Images from film “Draw Up and Stare” featuring (left to right) Academy Award Winner Melissa Leo, Academy Award nominee Michael O’Keefe, and Linda Powell.

EXPOSITION GIRLFRIEND

a film and theater
production company

Initially founded in 2004 as part of Apparition Productions, Exposition Girlfriend Productions, LLC is a film and theater production company run by Obie Award winner Emily Donahoe.

Exposition Girlfriend Productions (EGP) cultivates creative, generative relationships between theater and film artists. We develop and produce character-driven stories that explore dynamics of personal accountability, community disruption, and aspirations to world building.

EGP prioritizes inclusion at every level of story and production. Our ambition is to empower a diversity of creative stakeholders in order to make outstanding, innovative work.



Images from film “Draw Up and Stare” featuring (left to right) Danielle Skraastad, Michael O’Keefe, and Melissa Leo. Directed by Jeremiah Kipp.

EXPOSITION GIRLFRIEND

a film and theater
production company

Upcoming Projects

“Draw Up and Stare”

Tag Line: A fireman returns to his quiet upstate cabin after unexpected time away, only to discover that he's not alone.

Starring (in alphabetical order): Melissa Leo, Erik Lochtefeld, Michael O’Keefe, Linda Powell, and Danielle Skraastad. Directed by Jeremiah Kipp, written by Emily Donahoe. Completion date: November 2021.

Link [here](#).

https://www.imdb.com/title/tt13890590/?ref_=adv_li_tt

“Untitled O’Neill Adaptation”

In the wake of personal loss, two friends from high school reconnect in mid-life with the hope of rekindling their old romance.

Inspired by Eugene O’Neill’s “Moon for the Misbegotten,” set in 2004 East Carroll Parish, Louisiana post Hurricane Katrina. Shot in Hunter, NY. Fall 2021.

Starring (in alphabetical order): Obie Award winner Emily Donahoe (Showtime’s *Homeland* and upcoming *American Rust*, Amazon’s *Dead Ringers* with Rachel Weisz), and Erik Lochtefeld (Amazon’s *The Marvelous Mrs. Maisel*, Broadway’s *Metamorphosis* and *King Kong*). Directed by Jeremiah Kipp, written by Emily Donahoe.

Our Producers



EMILY DONAHOE

Co-founder and executive producer, Apparition Productions. Off-Broadway productions included world premiere of Anne Washburn's "Apparition" ("Best of 2005," Time Out New York), and Mark Shultz's "Deathbed" ("A coolly thoughtful and taut meditation," New York Times). Other projects included associate production of "(I Am) Nobody's Lunch" with The Civilians at Edinburgh Festival ("First in Fringe" award) and development workshops with Kyle Donnelly, Jordan Harrison, and filmmaker Jeremiah Kipp.

As an actor, Emily Donahoe received an Obie Award for her performance in Lucas Hnath's "The Christians" at Playwrights Horizons in New York, NY. She also received a Helen Hayes Award for her performance in "Shakespeare in Hollywood" at Arena Stage in Washington, D.C., and a Connecticut Critics Circle Award nomination for her performance in "Mary Jane" at Yale Rep in New Haven, CT. She served as a 2017 Beinecke Fellow at the Yale School of Drama. Emily has performed on Broadway & Off-Broadway, in regional theaters around the country, on TV, film, and radio. She can be seen in the upcoming limited Showtime series "Rust," with Maura Tierney.

Emily is the founder of WOMENSPEAK Training (WST), a public communications training company. WST offerings work to build female voice and visibility in public spaces by giving women, men, and organizations tools to amplify women's voices and to drive organizational performance. Clients range from Fortune 500 companies to advocacy organizations (including events for the Women's Campaign School at Yale University). She has been a featured speaker in the US and internationally on the topic of Women's Voices in Public Spaces, and Building Female Share of Voice within organizations.



DAVID McMAHON

David McMahon has a Master of Fine Arts in Acting from the University of California-San Diego and, as an actor, worked at such theatres as Actors Theatre of Louisville, La Jolla Playhouse, the Eugene O'Neill Theatre Center and in theatres all over New York City. He is the co-founder, along with Emily Donahoe, of Apparition Productions. Apparition Productions produced Anne Washburn's Apparition, directed by Les Waters, off-Broadway at the Connelly Theatre (Time Out New York Top Ten Productions of the Year, New York Times Critic's Choice) as well as Deathbed by Mark Schultz.

David has also produced and directed two documentary feature films. His first film, "Bayou Blue" was co-directed with Alix Lambert, and premiered at IDFA in Amsterdam. His second film, the award-winning "Skanks," premiered at the Slamdance Film Festival.

In addition to producing and filmmaking, David has taught at UCSD and Birmingham-Southern College. He also is on the board of Trinity Place Shelter, a shelter for LGBT youth in Manhattan, and serves on the advisory board of the Sidewalk Film Festival.



AMANDA REHBEIN

Trained in fine arts and stage design, Amanda is a New York-based designer with over 20 years experience in bringing creativity to events, hospitality, theatre and film. As the Associate Creative Director for Relevant, an experiential market group, and the Design Director at Oliver Cheng Catering and Events, she designed multi-disciplinary installations for top brands like Heineken, Nike, Victoria Secret, Don Julio, Hennessy, W Hotels, Renaissance Hotels, Stoli, Gilt.com, Diesel, Microsoft, Bon Appetit, Net-A-Porter, Old Navy and Time Warner Cable.

Her creative studio, Amanda Rehbein Studio, focuses on hospitality, commercial and residential spaces. Amanda has developed a diverse team of imaginative designers and technical masters, to offer full service design solutions for all projects.

Amanda earned her degree in Theatre Design at Concordia University in Montreal and her Masters in Fine Arts at New York University in Design for Stage and Film.

EXPOSITION GIRLFRIEND

a film and theater
production company

More Info / Contact

Website:

Exposition Girlfriend Productions, LLC
www.expositiongirlfriend.com
917.826.9987

Mailing Address 1 :

Emily Donahoe
Exposition Girlfriend Productions, LLC
177 9th AVE, #2B
New York, NY 10011

Mailing Address 2:

Exposition Girlfriend Productions, LLC
co Papile Accountancy
9000 Sunset BLVD, Suite 709
West Hollywood, CA 90069

Legal:

John F. Feldsted
Feldsted & Scolney
8383 Wilshire Blvd., Suite 210
Beverly Hills, California 90211
jff@taxbizlaw.com
office 310 363-0909
cell 310 721-9091