

SMILE

the series



GRIFFITH FILM SCHOOL PRESENTS A XANTHE MARCELLE PRODUCTION CAMERON SCURRAH JULIE BERRY MA FOLEY & DEAN RED
"SMILE" DIRECTED BY NATALE SMONDV CASTING BY KERAN BRICE DIRECTOR OF PHOTOGRAPHY CHASE BROCKETT MUSIC BY DAVID NORMOYLE
ART DIRECTOR OLIVIA LEONARD EDITED BY AIDAN MANWARING CO-PRODUCED BY MICHAEL OLIVE
WWW.FACEBOOK.COM/SMILE.THE SERIES



SMILE: THE SERIES

Running Time:

6 x 10 minutes

Directed By:

Natalie Simonov

Written By:

Xanthie Marcelle

Produced By:

Xanthie Marcelle

Michael Olive

Production Company:

Griffith Film School

Edited by:

Aisan Manwaring

Lachlan Macfarlane

Cinematographer:

Chase Brockett

Composer:

David Normoyle



LOGLINE

When a young, devoutly Christian woman receives a journal from her choirmaster, she starts seeing the darkness in her life. But will she stay a meek little good girl or embrace her evil simmering beneath the surface.

SYNOPSIS

Faith Meadows is a young Christian woman with secrets. On her 18th birthday, she receives a sketchbook from her choirmaster, Mary Quinn, and starts to relinquish her hold on her darker impulses. Over the course of a week, Faith descends into darkness. Powerless to stop the terrible 'discipline' her parents inflict on her beloved sister Grace, abuse that she herself used to suffer under, she scrambles to find peace in her isolation. When her father is going to rape her sister Grace, she snaps and kills her sister in an act of mercy. Now a predator, Faith kills her mother and gets a taste for blood, drawing out the torture of her father before being reborn into the world..

OUR STORY

Smile: The Series started as a final Masters project script. Through the support of Griffith University, collaborative efforts of the team and dedication of the writer/producer, Xanthie Marcelle and co-producer Michael Olive, what was going to be a proof of concept shoot turned into filming the series in its entirety.

The series scripts are to be used as part of an exegesis establishing the existence of a female horror archetype known as the Final Straw Girl, a woman who experiences such trauma that she becomes something monstrous.

Once post production is complete, the producers will be bringing on a aggregator to assist in distribution platforms and submitting the series through multiple festivals.





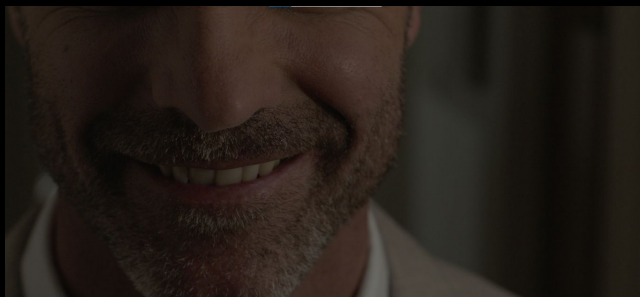
Cameron Scurrah as *Faith Meadows*

Faith Meadows is a good Christian girl. She attends the church choir and rides her bike, but she's hiding a dark side. Trapped in a home where her family are the enemy, Faith has some big choices to make. She's just turned 18 and it seems it's only a matter of time before the world deals her a final straw.



Julie Berry as *Peggy Meadows*

Peggy Meadows is Faith's mother and seems like the perfect Christian woman. Upstanding citizen, mother of two beautiful girls, doting wife. However, behind her thousand-watt smile lies a twisted woman who hates her children for taking away her husband's love. She isn't what her husband wants anymore, but the picture perfect family image must be maintained, and she's quite capable of getting a power rush through inflicting psychological torment.



Dean Reid as *Richard Meadows*

Minister Richards Meadows is Faith's father. When he's away for work, he visits rural towns, providing guidance and support. When he's at home, the church community only see a happy family. But Meadows takes disciplining his children to a despicable level, facilitating years of abuse of Faith before turning on the younger sibling, Grace. He's a man of very specific tastes.

DIRECTOR, Natalie Simonov

'Smile The Series' was an amazing and rare opportunity for me as I'd never directed a screenplay I didn't personally write. It gave me the opportunity to absorb a piece of material created by another creative mind and employ my own interpretations on it as opposed to adapting my own writings. Along with our actors, we unlocked subtleties through expressions, long pauses, and let the context of the horrific events Faith endured flow through performance.

Cameron's performance as Faith blew me away constantly on set, and we both found ourselves exploring deeper and scarier parts of ourselves and our experiences to bring the character to life. Faith's transformation from a weak timid victim to an insane formidable force made us question and fear that we could go to the same dark places if we snapped hard enough. Faith hit close to home for the both of us.

I've learnt so much about directing and working with actors thanks to this project, as well as working with an amazing crew who stuck through thick and thin no matter what. This project will always be special to me because we are all Faith; we all have the ability to take things too far if pushed too hard. I want to share with everyone those feelings and let them question their own morality and decide for themselves whether Faith's choice was justified, or if she took things too far.



WRITER / PRODUCER, Xanthie Marcelle

Xanthie Marcelle is a writer and producer based in Brisbane, Queensland. She loves writing stories with complex female characters and is especially interested in horror and diverse storytelling. In her productions, she emphasises safe, supportive working environments and strives to continue this in future productions.



CO-PRODUCER, Michael Olive

Michael Olive is a Brisbane based aspiring producer and production manager. His understanding of the filmmaking process, especially its organisational complexity, has made him an asset to the productions he has worked on.



CREDITS

Directed by

Natalie Simonov

Written by

Xanthie Marcelle

Produced by

**Xanthie Marcelle
Michael Olive**

Director of Photography

Chase Brockett

Art Director

Olivia Leonard

Production Designer

Madeline Leonard

Editor

**Aidan Manwaring
Lachlan Macfarlane**

SFX Makeup Artist

Katie Whitmore McNamara

Music by

David Normoyle

Production Sound Recordist

**Nic Dunning
Daniel Meldrum**

Sound Designer

**Michael Monaco
Joseph Morrison
Cameron Lillyman
Lisa Mae Hasnul**



CAST

Faith Meadows
Peggy Meadows
Grace Meadows
Richard Meadows
Mary Quinn
Billy
Marcie Thomas
Mrs Thomas
Tutoring child
Cam
Jack
Liz
Young Peggy
Darryl
Strange Man #1
Strange Man #2

Cameron Scurrah
Julie Berry
Mia Foley
Dean Reid
Sherri Smith
Jet Johnson
Tahya Vassalos
Donna Gomez
Mia Johnson
Jimmy Butterfield
Sam Tilley
Kyra Thompson
Eliza Allen
Keiran Brice
Jack Cortez
Andrew Seymour



Unit Manager:

Xanthie Marcelle

First Assistant Director:

Deonne Milton

Sierra Sweeny

Darcy Studte

Nick Grice

Abdul Mateen

Paola Zamora

2nd Assistant Director:

Jessica Heath

Darcy Studte

Runner/Production Assistant:

Natashan Doan

Script Supervisor:

Ainslee Hunter

Boom Operator:

Jackson Kitchener

Live Sound Mixer

Joseph Morrison

1st Assistant Camera:

Chloe Stanke

Abby Truman

2nd Assistant Camera:

Eli Glastonbury

Anya Suffolk

Lachlan Macfarlane

Key Grip:

Jessica Nguyen

BTS Team Leader:

Zac Emmerton

BTS Assistant:

Amy Langdon

Katelyn Hoger

Maia Jorgensen

Gaffer:

Jarryd Mclucas

Lighting Assistant:

Zacch Wolfe

Art Department Assistant:

Miljana Miljevic

Colourist:

Chase Brockett

Chloe Stanke

Sarah Clearwater

Jessica Nguyen

Sound & Music Mixer:

Cameron Lillyman

Sarah Clearwater

Nicholas Dunning

