

JACK WYATT
AND THE
GUN FROM HELL™

MOTION PICTURE PRESS KIT

CLAY PIGEON STUDIOS PRESENTS A CLAY DUMAW FILM
DREW HIRSCHBOECK JEFFREY T. SMITH MIRANDA BYERS LYLE DEROSE RODRIGO TACTAQUIN TIM ATNIP "JACK WYATT AND THE GUN FROM HELL"
VISUAL EFFECTS CLAY DUMAW EXECUTIVE PRODUCER RODRIGO TACTAQUIN COLOR CONSULTANT CARLOS MALACHE OPENING THEME JORDAN WILLBANKS
WRITTEN, DIRECTED & PRODUCED BY CLAY DUMAW

TECHNICAL SPECS

Writer, Director & Producer Clay Dumaw

Executive Producer Rodrigo Tactaquin

Production Company Clay Pigeon Studios

Visual Effects Clay Dumaw

Opening Score Jordan Willbanks

Running Time 85 minutes

Aspect Ratio 2.35:1

URLs & Hashtags

GunFromHell.com

facebook.com/GunFromHellMovie

Instagram.com/GunFromHellOfficial

#GunFromHell #JackWyattMovie

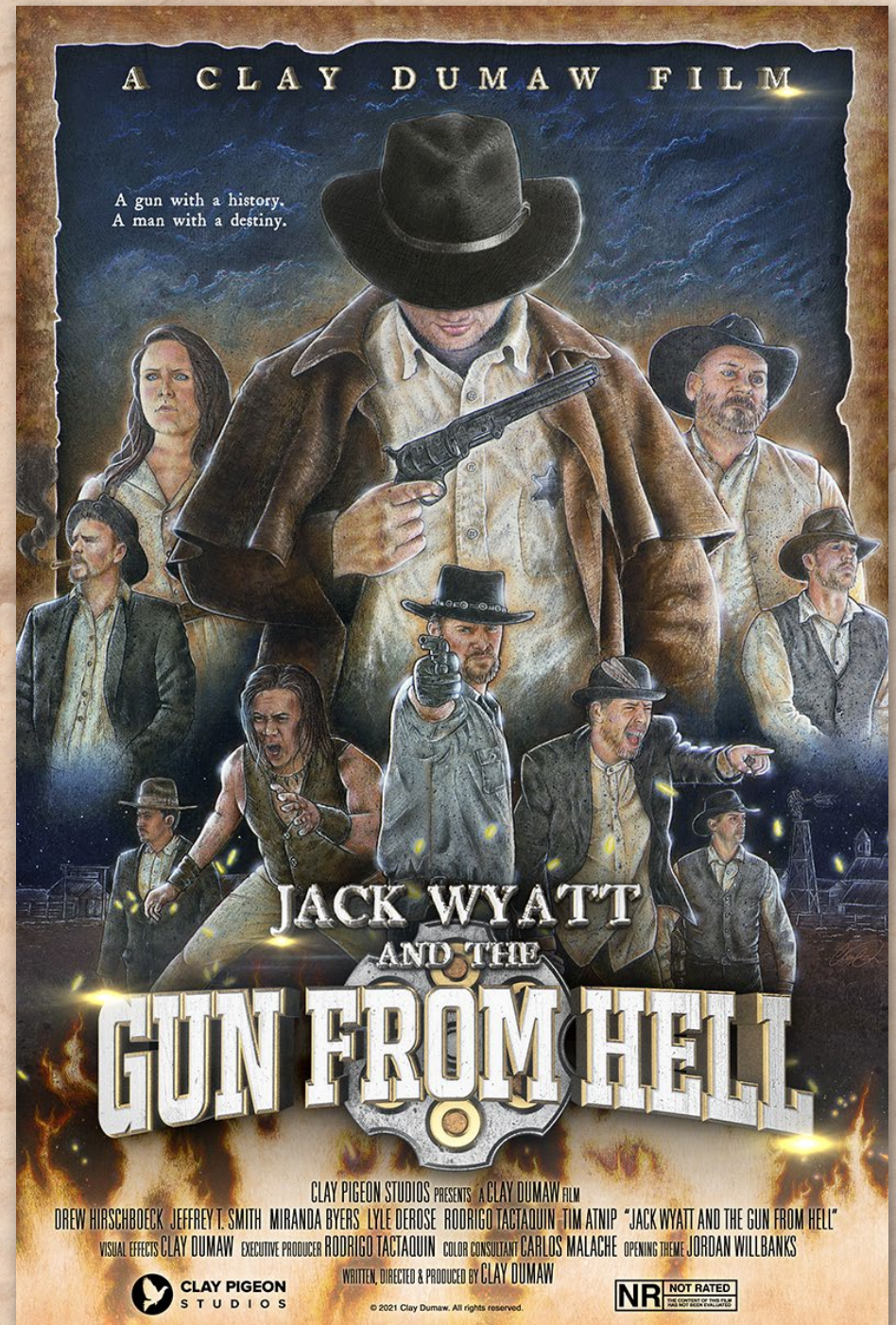
Logline

When a gold miner is given a pistol with unspeakable power, he must defend his hometown from a gang of outlaws.

Synopsis

After rescuing a mysterious drifter from certain death, a gold miner named Jack Wyatt is gifted a cursed pistol with unspeakable power. Little does he know that a gang of outlaws, led by the evil Thane Maddox, is searching for the notorious Gun from Hell.

© 2021 Clay Dumaw. All Rights Reserved.



CLAY PIGEON STUDIOS PRESENTS A CLAY DUMAW FILM
DREW HIRSCHBOECK JEFFREY T. SMITH MIRANDA BYERS LYLE DEROSE RODRIGO TACTAQUIN TIM ATNIP "JACK WYATT AND THE GUN FROM HELL"
VISUAL EFFECTS CLAY DUMAW EXECUTIVE PRODUCER RODRIGO TACTAQUIN COLOR CONSULTANT CARLOS MALACHE OPENING THEME JORDAN WILLBANKS
WRITTEN, DIRECTED & PRODUCED BY CLAY DUMAW



© 2021 Clay Dumaw. All rights reserved.



This electronic press kit (E.P.K.) contains official information and images related to the Gun from Hell plot and production, intended for use in reviews and articles. We ask that you use the material in this E.P.K. to represent the film and its producers positively. Any distasteful or malicious use of the content in this E.P.K. could be subject to DMCA takedown.

PRODUCTION

Clay Dumaw began writing *Gun from Hell* in 2015 while living in Northern New York. The script went through numerous drafts after Clay relocated to Colorado to work in commercial productions.

Pre-production began in 2016 and required nearly a year to organize. Due to the film's technical nature, Clay meticulously storyboarded every shot and mapped out every angle. Executive producer and actor Rodrigo Tactaquin played an integral hand in discovering almost half the film's cast.

Production started in 2017 on a soundstage in Colorado Springs with partial scenes shot in Northern New York. The show implemented a combination of Panasonic, Blackmagic and RED cameras, each suitable to their task. *Gun from Hell* became one of the only independent feature films shot entirely on a green screen. Fragmented availability of the cast meant that they rarely performed on set together. Instead, they filmed scenes separately. The goal was to composite everyone together later on. Despite sharing moments on-screen, some of the cast did not meet until filming wrapped.



In post-production, Clay modeled a digital world from scratch using consumer software like Cinema 4D and Element 3D. Environments consisting of deserts, mountains, a town, and a forest the size of a football field, was composited with live-action footage using Adobe After Effects. The tedious nature of the green screen sometimes required several actors, filmed separately, to be composited into one image. In many instances, performers had to be rotoscoped, traced frame-by-frame to lift them from one background, and placed onto another.

The audio was an equally vital component of post-production. Additional dialogue replacement (A.D.R.) was recorded for nearly all the cast, requiring them to re-read all their lines in a studio. Every sound effect, grand or small, was recorded in post.

Altogether, post-production spanned nearly two years. From conceptualization to completion, *Jack Wyatt and the Gun from Hell* was five years in the making.

CLAY DUMAW

WRITER • DIRECTOR • PRODUCER

Clay Dumaw was born in Northern New York, where he studied Visual Communications at the Charles H. Bohlen Technical Center. Early in his career, Clay freelanced as a designer and visual effects artist, animating title sequences for independent productions.

Clay wrote and directed two feature films, *Get Out Alive and Hold'em*, which earned official selections at several festivals, including the Buffalo International Film Festival. He achieved success working on national television ads for clients like Honda, Toyota, and Ford. Apart from directing *Gun from Hell*, Clay also edited, created visual effects, and did the sound design.



RODRIGO TACTAQUIN

EXECUTIVE PRODUCER

Rodrigo is known for his work on *Longmire*, *Get Shorty*, *Mt. Molehill*, *Syn*, and he has also modeled for the fashion and photography industry.

Rodrigo worked closely with the director, Clay Dumaw, to cast and executive produce *Gun from Hell*.

CAST

DREW HIRSCHBOECK as JACK WYATT

Drew is an actor known for his roles in Syn and Otis. He has also performed theater productions of The Legend of Sleepy Hollow, The Little Dog Laughed, Baby: the Musical, Sunset Boulevard, and A Time to Kill. Drew's talents include singing, martial arts, basic Spanish, saxophone, parkour, and essential fencing techniques.



LYLE DEROSE as FLINTLOCK

Lyle gained notoriety from the producers of a reality show, American Guns, filmed in Arvada, Colorado. Lyle realized he was meant to be in front of the camera and appeared in a few more TV shows, Lords of War and Big Rig Bounty. He later starred in commercials, short films, and feature productions like Hell or High Water, Woman Walks Ahead, and Longmire.



CAST

JEFFREY T. SMITH as MADDOX

Jeffrey began his career in high school, performing in *The Three Musketeers* and writing and directing shorts films. After a ten-year hiatus from acting while he served in the armed forces, Jeffrey returned to appear in television ads for Honda, Toyota, and freelance commercial work. He is currently writing multiple features with Clay Dumaw and directing and producing a short film about hockey.



RODRIGO TACTAQUIN as AHIGA

Rodrigo is known for his work on *Longmire*, *Get Shorty*, *Mt. Molehill*, *Syn*, and he has also modeled for the fashion and photography industry. His talents include bareback horse riding, improvisation, and archery.



CAST

MIRANDA BYERS as ROSE

Miranda is known for her roles in the feature films, Misogyny and Terror Tales. She has also starred in theater productions of Macbeth and Heathers: The Musical.



TIM ATNIP as LYLE

Tim has starred in television ads for Honda and Toyota.

STILLS





DAVID IANNOTTI



**CLAY DUMAW
& MIRANDA BYERS**

BEHIND THE SCENES



MIRANDA BYERS



STEPHEN DOROJA



DREW HIRSCHBOECK

VISUAL EFFECTS

Thousands of shots in *Gun from Hell* were created from scratch. The process required five basic steps.

1) Environments were meticulously modeled in *Cinema 4D*, then textured and lit in *Element 3D*.

2) Background plates were created by placing a virtual camera in the environment. Light rays and atmosphere were added upon render.

3) Green screen footage was cut in *Adobe Premiere*.

3) Green backdrops were removed using a combination of *Keylight* and other software.

4) Background and foreground elements were composited in *Adobe After Effects*. Final color correction and grading were achieved in *DaVinci Resolve*.



POSTER DESIGN

Clay Dumaw hand-illustrated and painted the Gun from Hell poster using the Drew Struzan method, a commercial artist known for The Thing, Indiana Jones, Back to the Future, and Star Wars. The mixed medium piece is a collage of characters that Clay illustrated on a 27x40" gray gessoed artboard. He then chose to add black & white speckles to give depth to the rendered graphite. Airbrush provided an initial color wash, enhanced by Prismacolor pencils. Clay painted highlights and shadows enhancements with acrylic paint. From start to finish, the poster required nearly a month to complete.



CREDITS

Clay Pigeon Studios Presents

Writer, Director & Producer
Clay Dumaw

Cast

Drew Hirschboeck	Jack Wyatt
Jeffrey T. Smith	Maddox
Miranda Byers	Rose
Lyle DeRose	Flintlock
Rodrigo Tactaquin	Ahiga
Tim Atnip	Lyle
David Iannotti	Drifter
Peter Doroha	Miner #1
Stephen Doroha	Miner #2
Trevor Dumaw	Outlaw #1
Carlos Malache	Outlaw #2
Jay Storey	Gambler
Bryan Stumpf	Jack's Friend
Shane Thurston	Deputy
Anthony Dumaw	Camper
Steven Weed	Thief

Executive Producer & Casting Director
Rodrigo Tactaquin

Color Consultant
Carlos Malache

Visual Effects
Clay Dumaw

Opening Theme
Jordan Willbanks

Sound Mix & Foley
Clay Dumaw

Stand-in
Kevin Yates

Editor
Clay Dumaw

Prop Design & Construction
Anthony Dumaw

Music
PremiumBeat
Video Copilot
Artlist

Filmed at
Windstar Studios Inc.
Steve Weed Productions

Shot on
Panasonic & RED



CLAY PIGEON
S T U D I O S