



Fling is a short film made in Aotearoa New Zealand.
For booking information contact ezlust@gmail.com

Find us at filmfreeway.com/projects/1536992

©AwkwardAesthetics 2020



FLING

Country of Production: Aotearoa, New Zealand
Date of Completion: December 2020

Shooting Format: RED camera 4K & iPhone
Screening Format: 3840 X 1650 ProRes, 1920 X 822 ProRes
Ratio: 2.33:1
Sound: 5.1 surround sound
Duration: 06:41
Genre: Drama, coming-of-age, LGBTQI+
Language: English

Log line: ***A run-in with an ex forces Amon to revisit the events surrounding his first time.***

One liner R18: Cum over, Stud
One liner GA: There's a first time for everything

Director, writer: Ed Lust

Contact details: ezlust@gmail.com, www.edlust.nz

Produced by: Ed Lust,
Alexandra Porter

Logo Design &
Poster Graphics by: Grant Sheridan

This film was made with the generous assistance of the New Zealand Film Commission Fresh Shorts Fund.



Te Tumu Whakaata Taonga

AWKWARD
AESTHETICS

c u m o v e r s t u d

FLING

A run-in with an ex forces Amon to revisit the events surrounding his first time.

SYNOPSIS

When a proudly-stubbled College student, Amon, is sent home to shave, he instead chooses to bunk indefinitely. While chasing his own sexual-education, over one long afternoon, Amon is confronted by the complications, and repercussions, that come with sharing his bed. Years later, once the fling is almost forgotten, Amon is faced with his old mate once more, and the contrasting ways they have come to remember their casual encounter.

MEMORIES, FANTASIES, RUMINATIONS

Fling strings together the memories of one rumination-inducing first-time at intimacy. Seeking no-strings skin-to-skin contact and, with the help of whatever app, the young Amon ultimately goes in pursuit of his own, real, extra-curricular activities. By exploring generational dissonance within queer communities, and the dehumanising potential of dating apps, *Fling* shines a light on one misguided attempt to urgently lose one's virginity.

Fling was filmed gradually, over several years, embracing the ways actors and locations changed over time. Filmed in Ōtautahi (Christchurch), Aotearoa (New Zealand), *Fling* features iconic locations including Hagley Park, and Cave Rock at Sumner Beach. Proof of the Ōtautahi earthquakes, and the ongoing regeneration, was utilised in some scenes.

06:41 - (6 minutes and 41 seconds)
Porter Pictures and Awkward Aesthetics
in association with the New Zealand Film Commission

Find us at filmfreeway.com/projects/1536992

PRESS KIT

FLING

©AwkwardAesthetics 2020

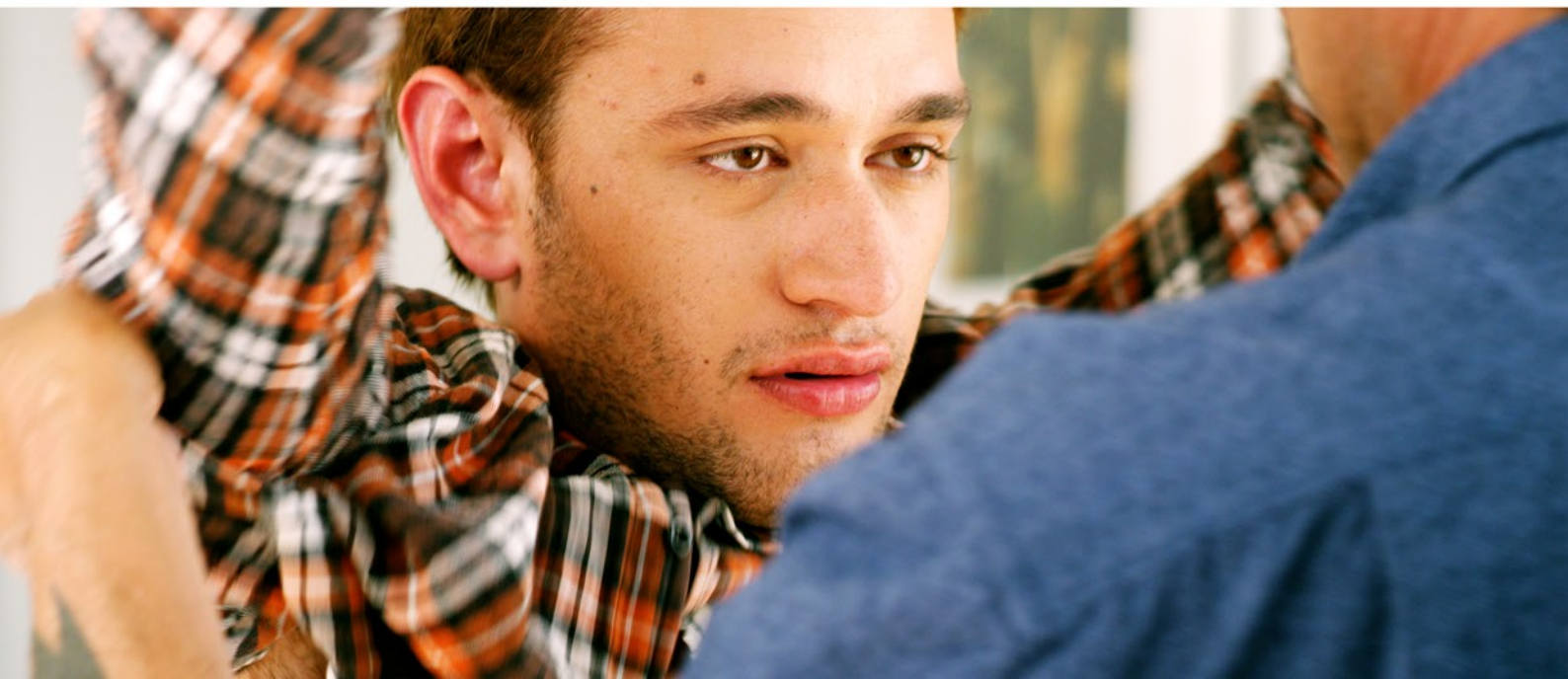


ALEXANDRA PORTER - PRODUCER

Alexandra Porter is an Ōtautahi (Christchurch) based filmmaker and multidisciplinary artist, with a series of short films to her name, including *Super8man* (2005) and *A Sense of Place* (2009), serving as writer and director. In 2012, her cinema-for-one, *Cinebooth*, featuring the original short, *N or Nor W: A Study of Canterbury Wind*, toured the South Island of Aotearoa (New Zealand). Porter has experimented widely with film formats and mediums. She has worked as an Audio Archivist since 2009 and, is currently writing her next film.

ED LUST - WRITER, DIRECTOR & PRODUCER

Fling is the pseudo-biographical short film by multimedia artist Ed Lust. Based in Ōtautahi, Aotearoa, Lust has experimented with music videos, video-art, documentary and drama. *Fling* is Lust's most personal film to date, and his first, since *Come to Light* (2012), the psychedelic short film inspired by the infamous 'lead-mask-case'. *Fling* is Lust's second time collaborating with musician Misfit Mod, after creating the official music video for her single, *Cars*. Ed Lust is currently developing his first feature-length film project.





INTRODUCING MATTY VISSER

Matty Visser is an Ōtautahi based performance-artist and actor. *Fling* is his first time acting on-camera, but you may have seen him perform already, either in the immersive theatre event, *Zombie: Red Zone*, or when he's MCing live events. Matty is a Scorpio; he is passionate, perceptive and determined. If stranded on a desert island he would only need some wood and rope, 'to get the hell outta there'. Besides his work on *Fling*, Matty has been performing in the world of burlesque as his current alter-egos, Mr GlitterSparklePants and Jack Swallows. Most of all Matty is looking forward to his next performance.

INTRODUCING ANDREW FIDOW

Andrew Fidow (Andy) is an Ōtautahi based performer, tutor and youth mentor who has worked as a professional actor since 2008. For *Fling*, Fidow rehearsed extensively with his scene partner Matty Visser, ensuring they were prepared to tackle their challenging roles. Fidow is proud of his ongoing creative work, performing in short films and theatrical productions, playing rugby in Aotearoa and in the UK. Above all, he is most proud of his children. Andrew was born on the Gemini/Cancer cusp. He has multiple degrees, tattoos and knows the London Underground like the back of his hand. If stranded on a desert Island he could survive on music and Whittaker's Coconut Chocolate while building his escape boat. Andrew looks forward to setting sail to Thassos, Greece.





AN EMOTIONAL SOUNDSCAPE

Fling boasts a delicate soundscape of music and impressionistic ambience. While writing *Fling*, Ed Lust was inspired by the Misfit Mod album, *Islands & Islands*. As a result, *Fling* now features Misfit Mod, in more than one sequence, with vocalist Sarah Kelleher unifying the soundtrack. A segment from Motte's epic string composition, *Strange Bedfellows* was chosen during post-production in order to provide a second register to *Fling*'s singular voice.

MISFIT MOD

At the crossroads of art, music, and DIY culture, you'll find Misfit Mod, the moniker of London-based Sarah Kelleher. With icy electronic beats, wet synths, and a hypnotic voice (one that veteran BBC host Tom Robinson said gave him goosebumps), Kelleher's music radiates a technicolor fantasy full of understated strength and late-night whispers. Her debut album, *Islands & Islands*, was released to acclaim in 2013.

MOTTE

Anita Clark is a Te Whanga-nui-a-Tara (Wellington) based violinist and composer performing under the moniker Motte as a modern classical, alt/experimental pop and ambient/noise artist. Her first solo album *Songs for Movies* was released in 2015, followed by *Strange Dreams* in 2017, with another album soon to be released. Anita's compositional highlights include scoring a Sydney based short *Shadows* by Eugene Dyson, a Te Whanga-nui-a-Tara short film *Bloom* for the web series *Someday Stories*, an experimental work *St Bathans Repeating* for Montreal based film-maker Alexandre Larose and composing for choreographer James O'Hara's dance piece in the Royal NZ Ballet's 2019 *Choreographic Series*.

06:41 - (6 minutes and 41 seconds)
Porter Pictures and Awkward Aesthetics
in association with the New Zealand Film Commission

Find us at filmfreeway.com/projects/1536992

PRESS KIT
FLING

©AwkwardAesthetics 2020



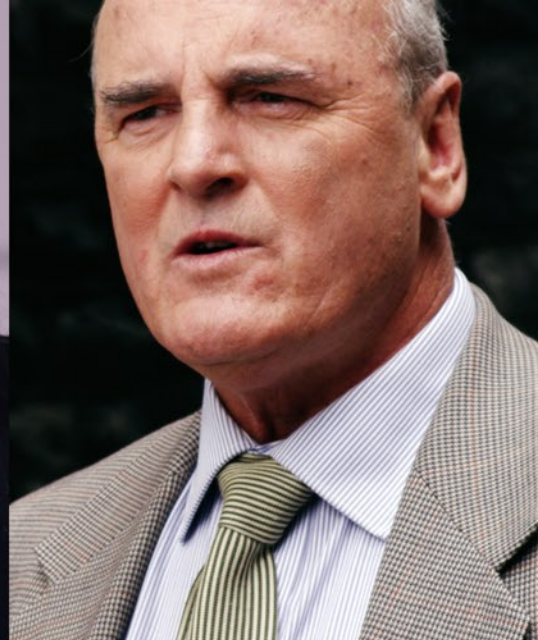
THE LOOK OF FLING

In 2013, when Ed Lust wrote *Fling*, he wanted to create a sophisticated queer short film that could evoke the isolation he felt prior to coming-out as LGBTQI+ in the South Island of Aotearoa (New Zealand). As *Fling* evolved into a story spanning years, it became clear that different looks would need to be adopted to help the viewer unravel the separate time periods- and narrative strands.

To create an evolving, natural look for *Fling*, Lust approached seasoned cinematographer Sabin Holloway with hopes of achieving a look inspired by figurative painting and modern thrillers. Working professionally as a cinematographer for over two decades, from short films to a wide array of advertisements and popular music videos, Holloway has left his mark on numerous kiwi film and music productions. As a photographer, Holloway regularly captures professional theatrical productions and, his images detailing the aftermath of the Ōtautahi earthquakes have been widely exhibited, including on Vice.

Ed Lust and Sabin Holloway have collaborated previously, on the original horror short film, *Stinkhorn*, written and directed by Ed Lust as part of his post-graduate study at Te Whare Wānanga o Waitaha University of Canterbury in 2011.





CAST

Amon MATTY VISSER
 Brock ANDREW FIDOW
 Teacher EVE BARLOW
 Master RON RODGER
 Son SPENCER SUTHERLAND TODD
 Students
 BELA ADASH
 MIRIAM INGRAM
 ASHER ETHERINGTON
 RHEANNA WALSH

First Assistant Director
 Cinematographer
 Camera Assistants
 Sound Recordists
 Costume
 Art Direction
 Make-up & Hair
 Casting Consultant
 Catering
 On-Set Assistant
 Sound Design
 Sound Mix

CREW

NAOKO MIYAMOTO
 ANNA CANTON
 SABIN HOLLOWAY
 KIRK PFLAUM
 JOHN CHRISSTOFFELS
 JULIAN VARES
 ALEX PARSONS
 MICHAEL SUMMERFIELD
 ALEX WOOTTON
 NATHAN INGRAM
 ED LUST
 SAM LUST
 EVE BARLOW
 DIANNA LUST
 ALIESHA MCGILLIGAN
 AUDREY BALDWIN
 ED LUST
 PHIL BURTON
 UNDERGROUND SOUND

