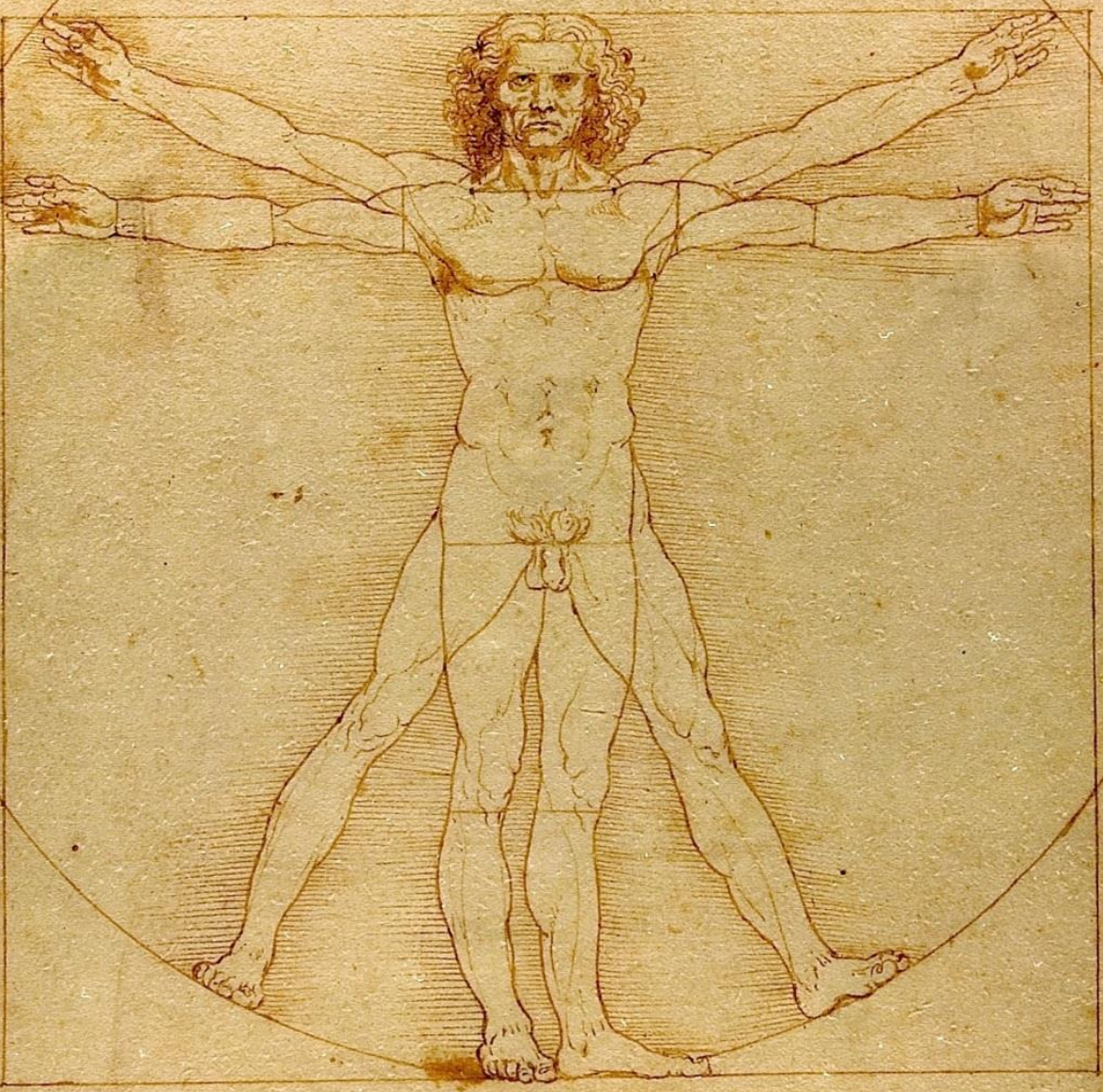
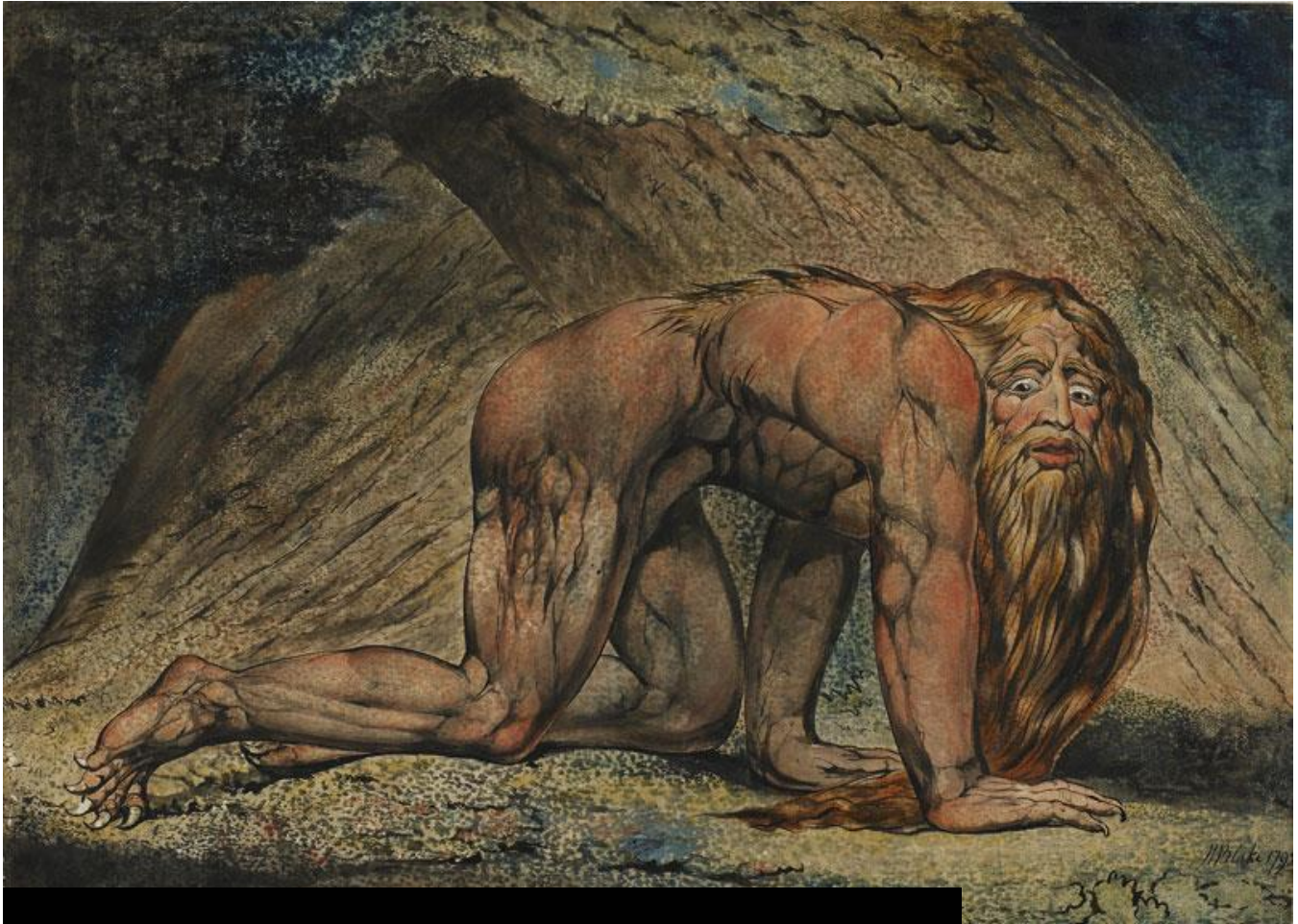


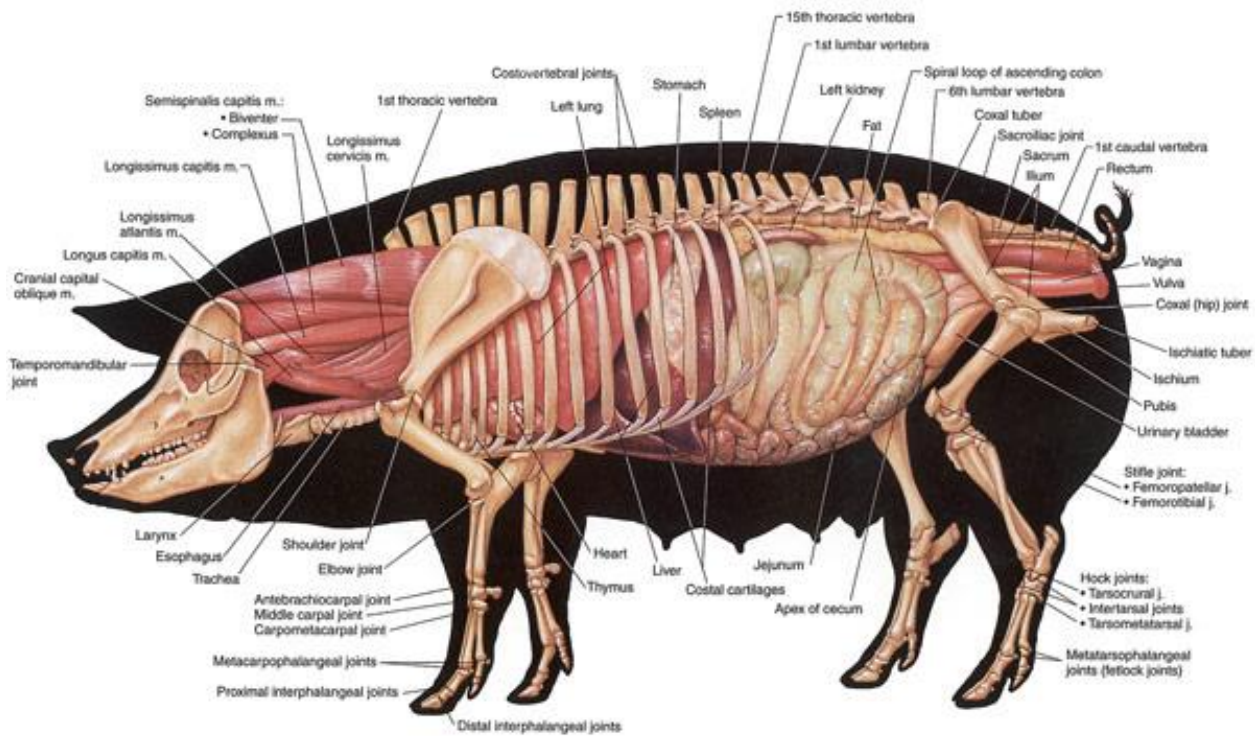
Handwritten text in a cursive script, likely a preface or introduction to the anatomical study, located at the top of the page.



Handwritten text in a cursive script, likely a continuation of the anatomical study or a commentary, located at the bottom of the page.



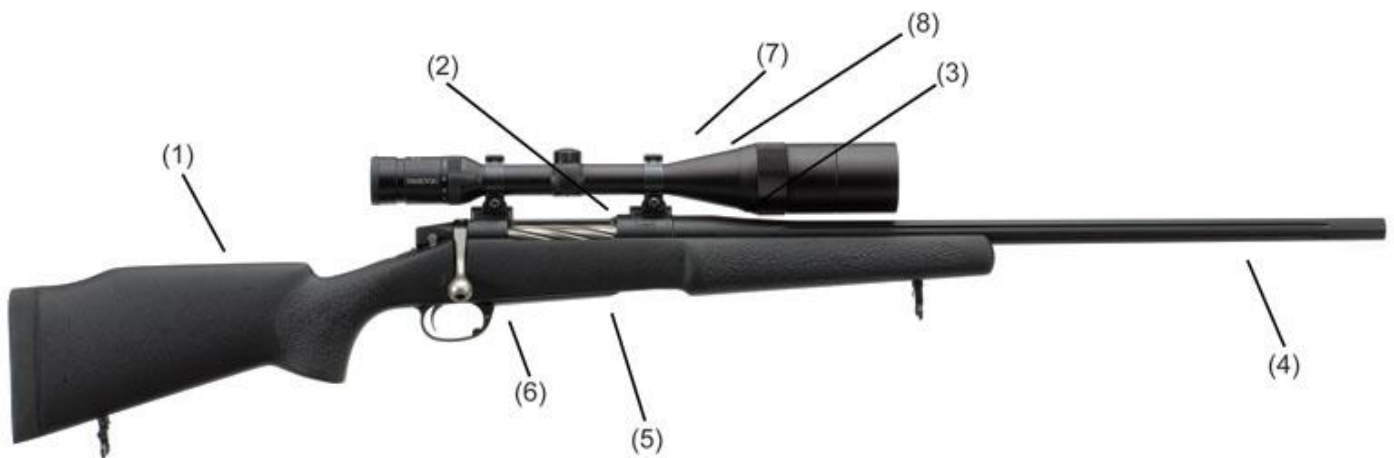


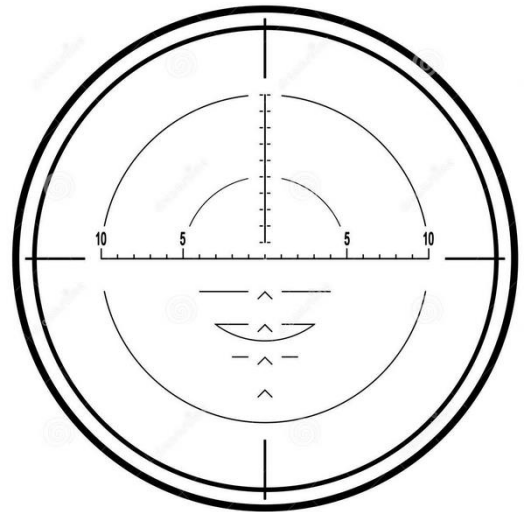












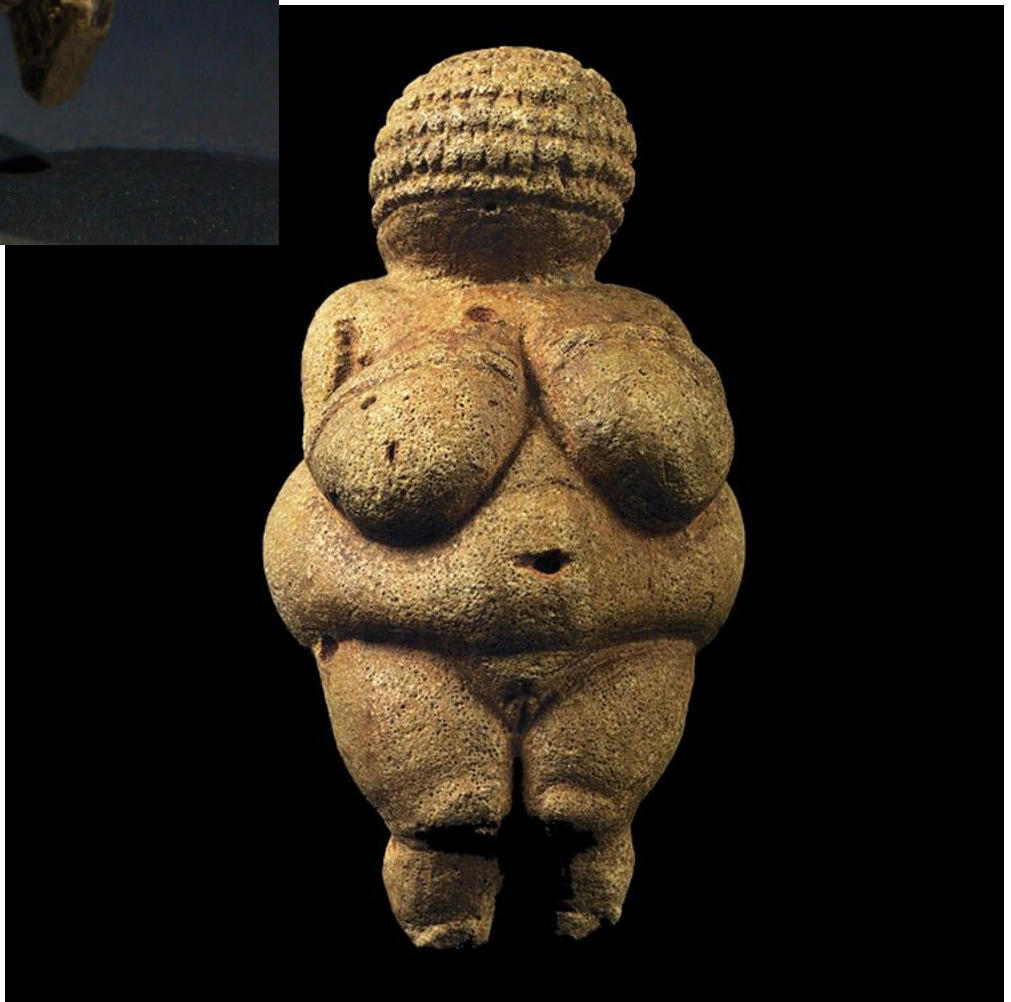






© Mike Lentz 2007

MODELING & DESIGN: CHARACTERS



MODELING & DESIGN: CHARACTERS





MODELING & DESIGN: CHARACTERS











Das Pferd, Tafel 6.

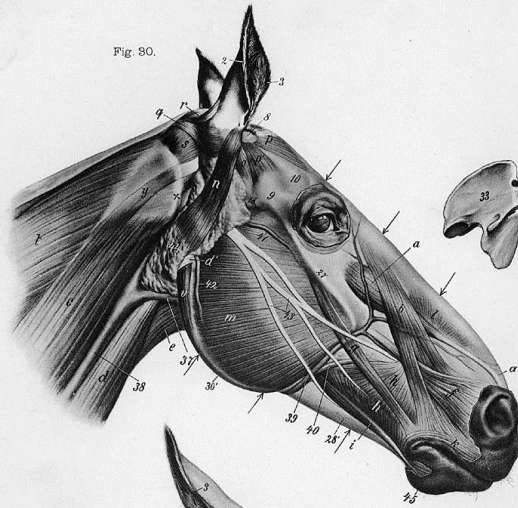


Fig. 80.

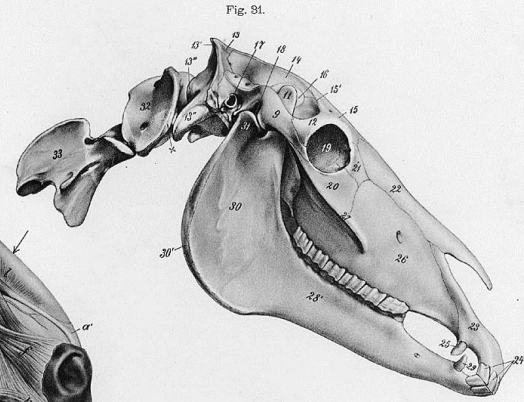


Fig. 91.

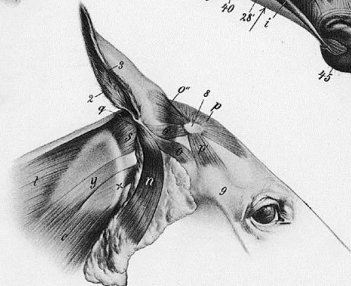


Fig. 86.

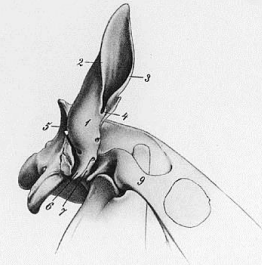


Fig. 87.

Ehrenberger, Baum & Dittrich, Anatomie.

Dieterich'sche Verlagshandlung, Theodor Weicher, Leipzig.

Das Pferd, Tafel 4.



Fig. 10.



Fig. 11.



Fig. 12.



Fig. 13.



Fig. 14.



Fig. 15.

Ehrenberger, Baum & Dittrich, Anatomie.

Dieterich'sche Verlagshandlung, Theodor Weicher, Leipzig.



