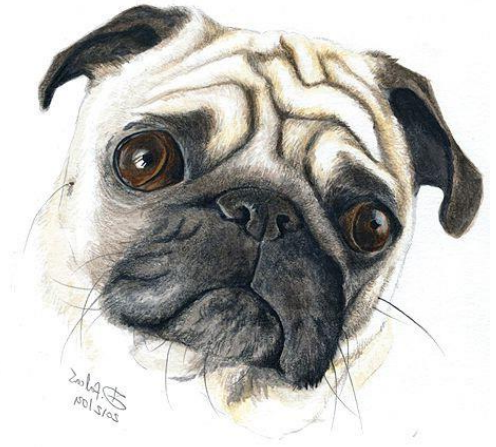




THE ART OF
**MAN'S BEST
FRIEND**

MAN'S BEST FRIEND



“Copain”

MAN'S BEST FRIEND



MAN'S BEST FRIEND

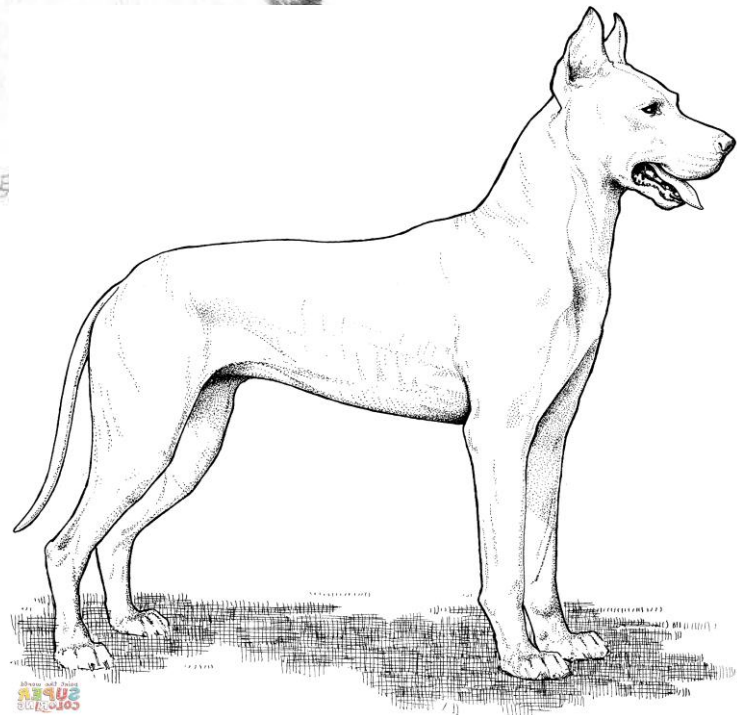


CROPPED EAR

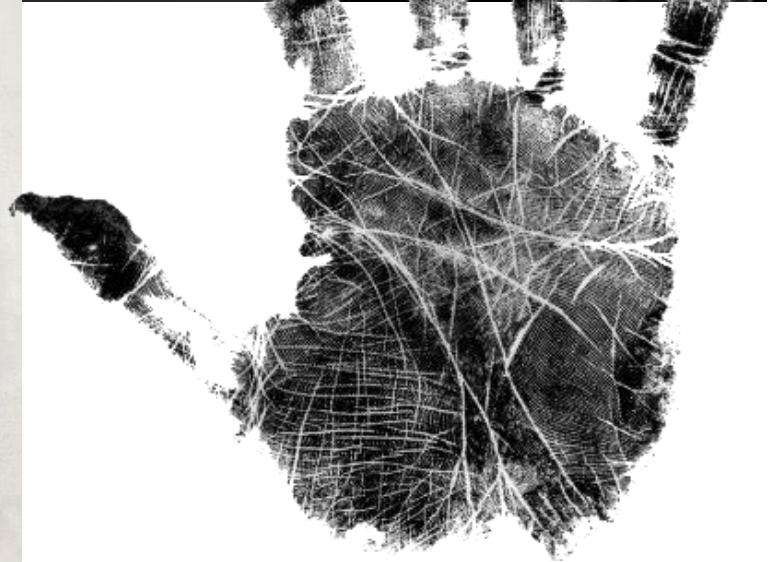


UNCROPPED EAR

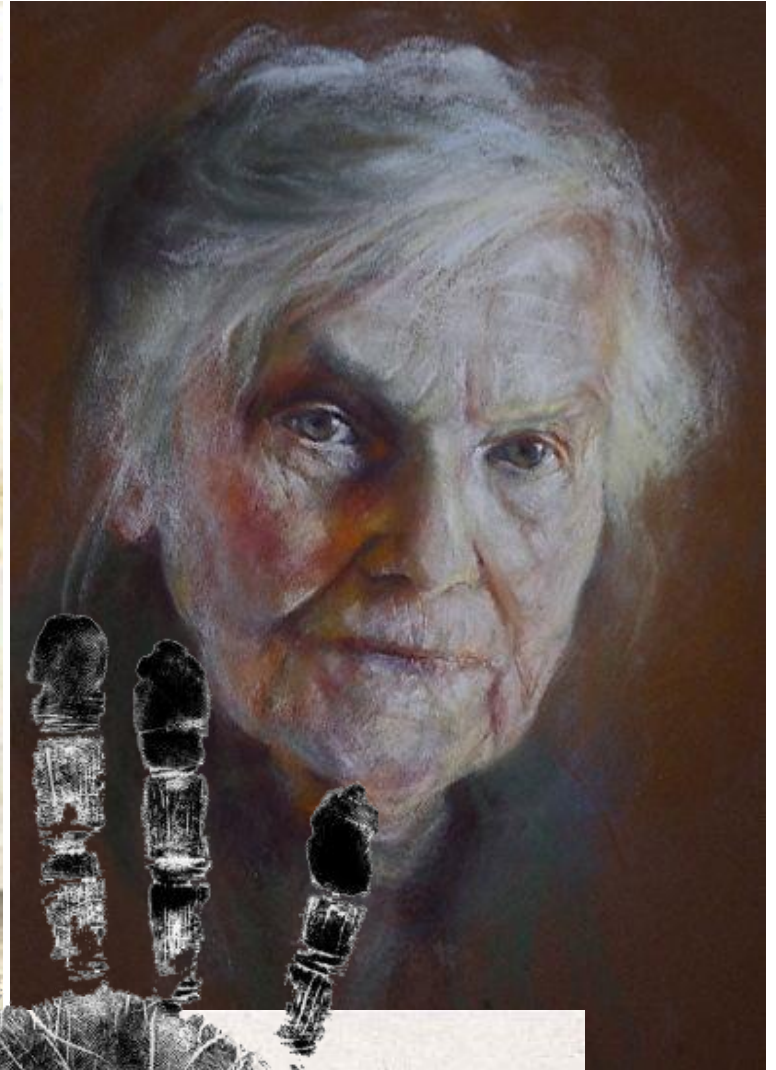
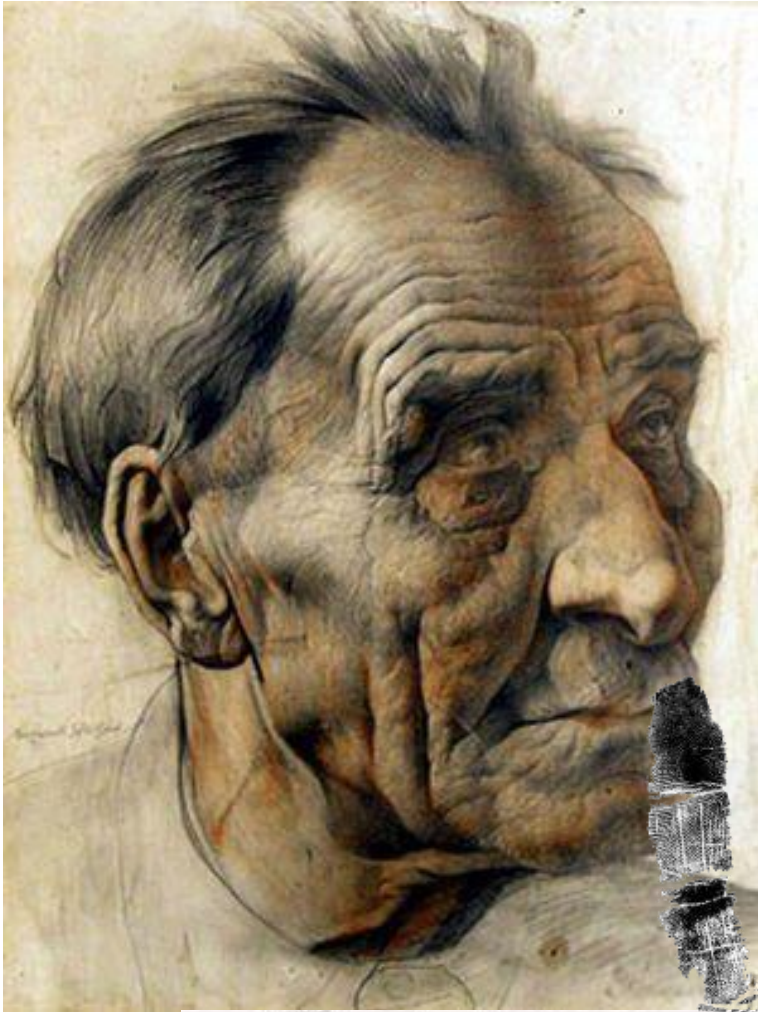
MAN'S BEST FRIEND



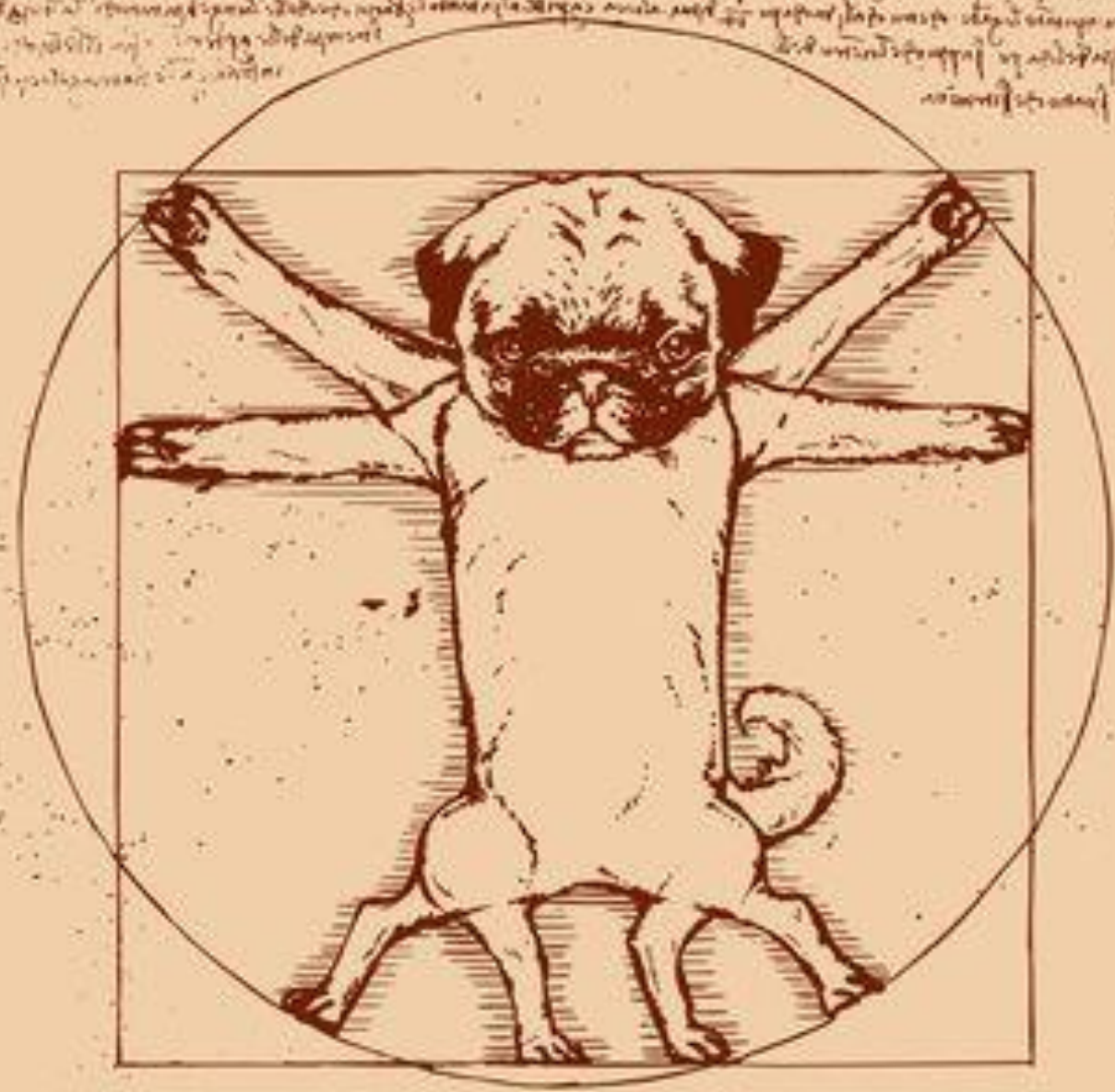
MAN'S BEST FRIEND



MAN'S BEST FRIEND



The first of these is the fact that the dog is a quadruped, and therefore its body is naturally adapted to a four-footed posture. The second is the fact that the dog is a carnivore, and therefore its body is naturally adapted to a diet of flesh. The third is the fact that the dog is a social animal, and therefore its body is naturally adapted to a life of companionship.



The dog is a quadruped, and therefore its body is naturally adapted to a four-footed posture. The second is the fact that the dog is a carnivore, and therefore its body is naturally adapted to a diet of flesh. The third is the fact that the dog is a social animal, and therefore its body is naturally adapted to a life of companionship.

The first of these is the fact that the dog is a quadruped, and therefore its body is naturally adapted to a four-footed posture. The second is the fact that the dog is a carnivore, and therefore its body is naturally adapted to a diet of flesh. The third is the fact that the dog is a social animal, and therefore its body is naturally adapted to a life of companionship.

MAN'S BEST FRIEND



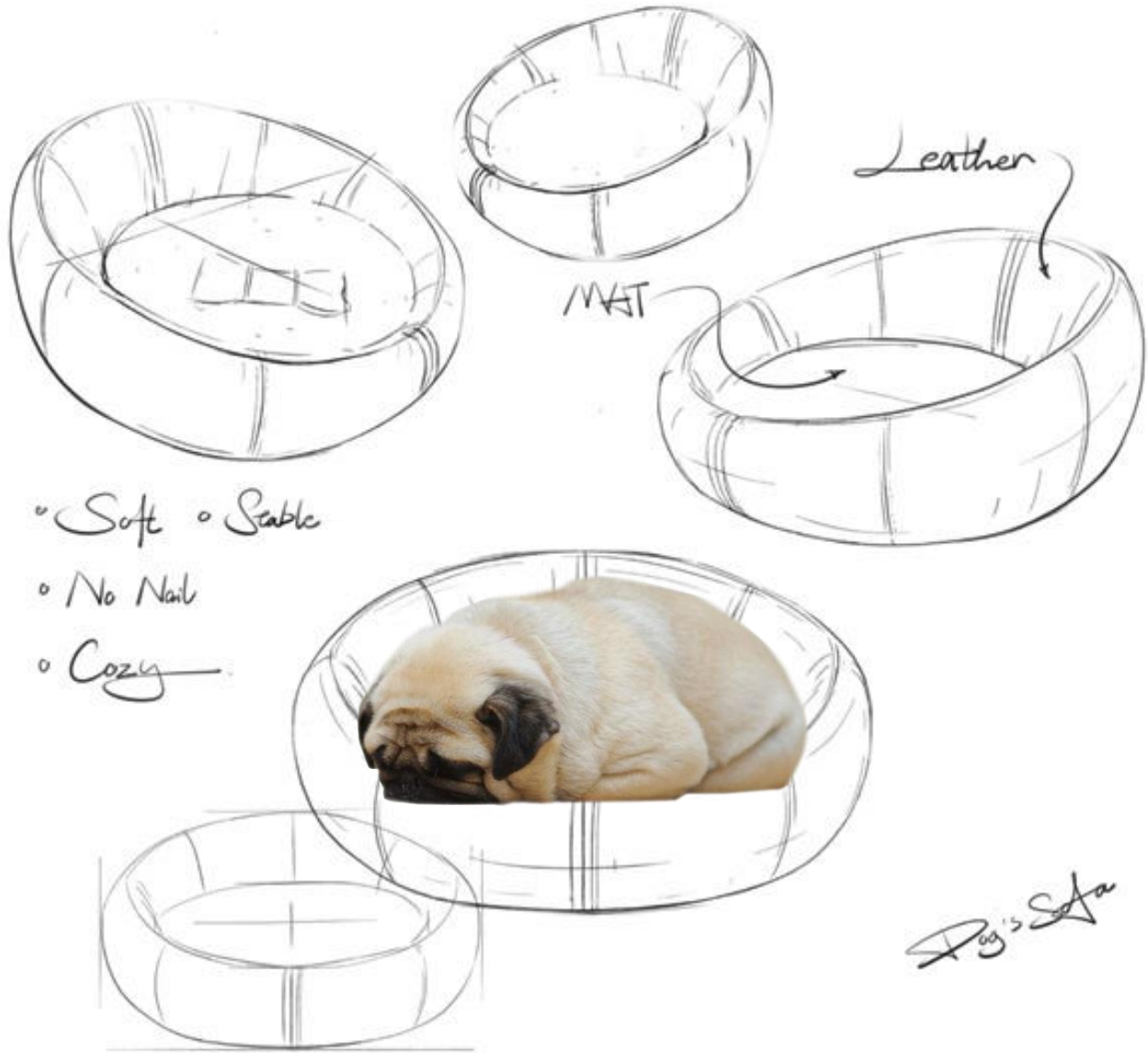
MAN'S BEST FRIEND



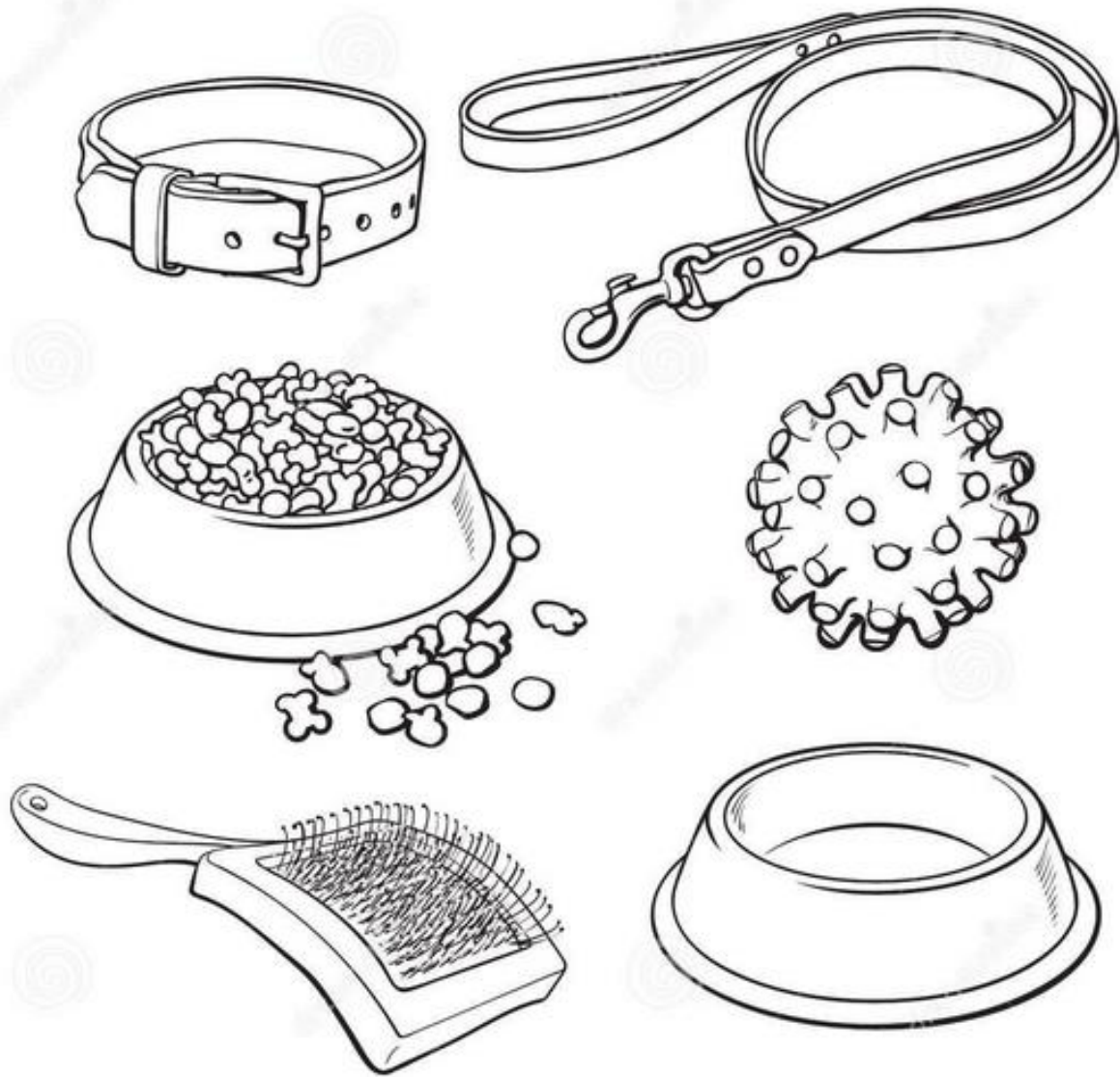
MAN'S BEST FRIEND



MAN'S BEST FRIEND



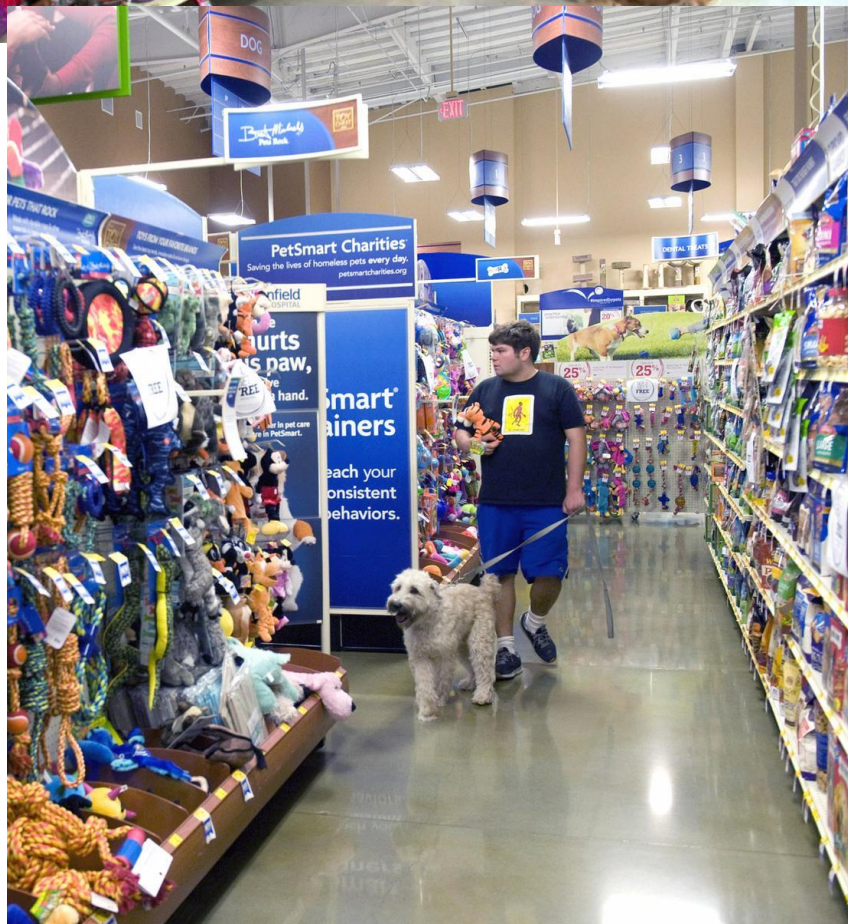
MAN'S BEST FRIEND



MAN'S BEST FRIEND

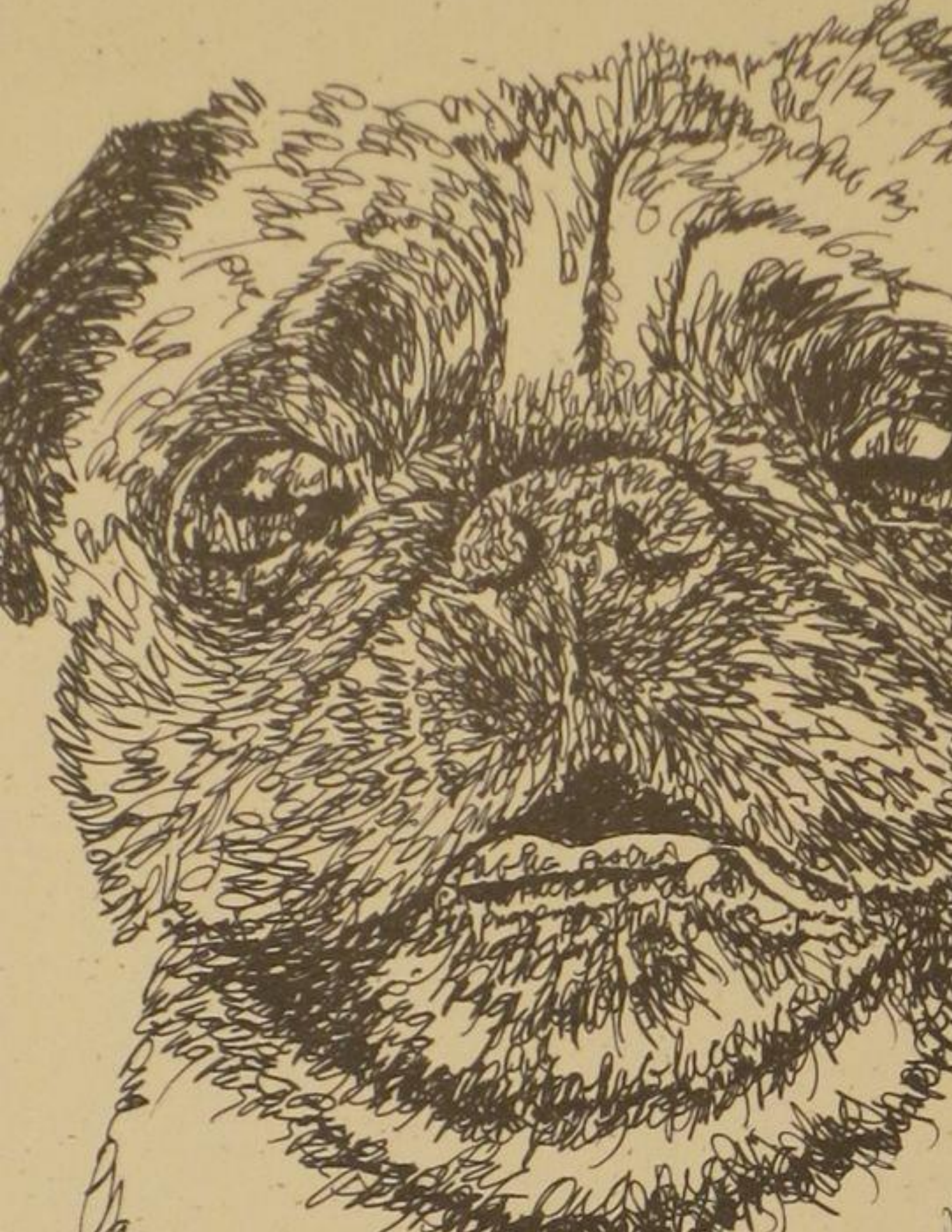


MAN'S BEST FRIEND



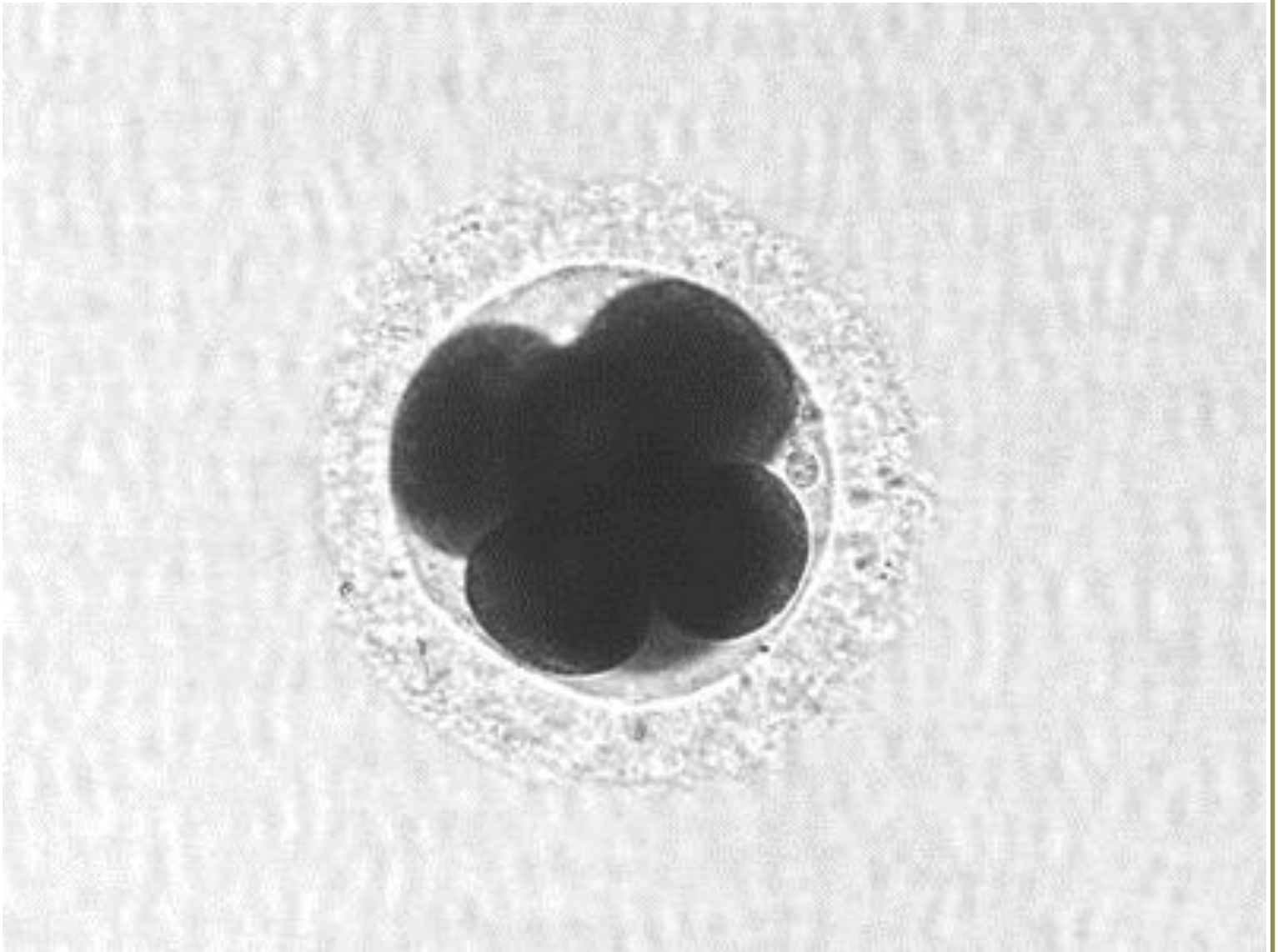
MAN'S BEST FRIEND



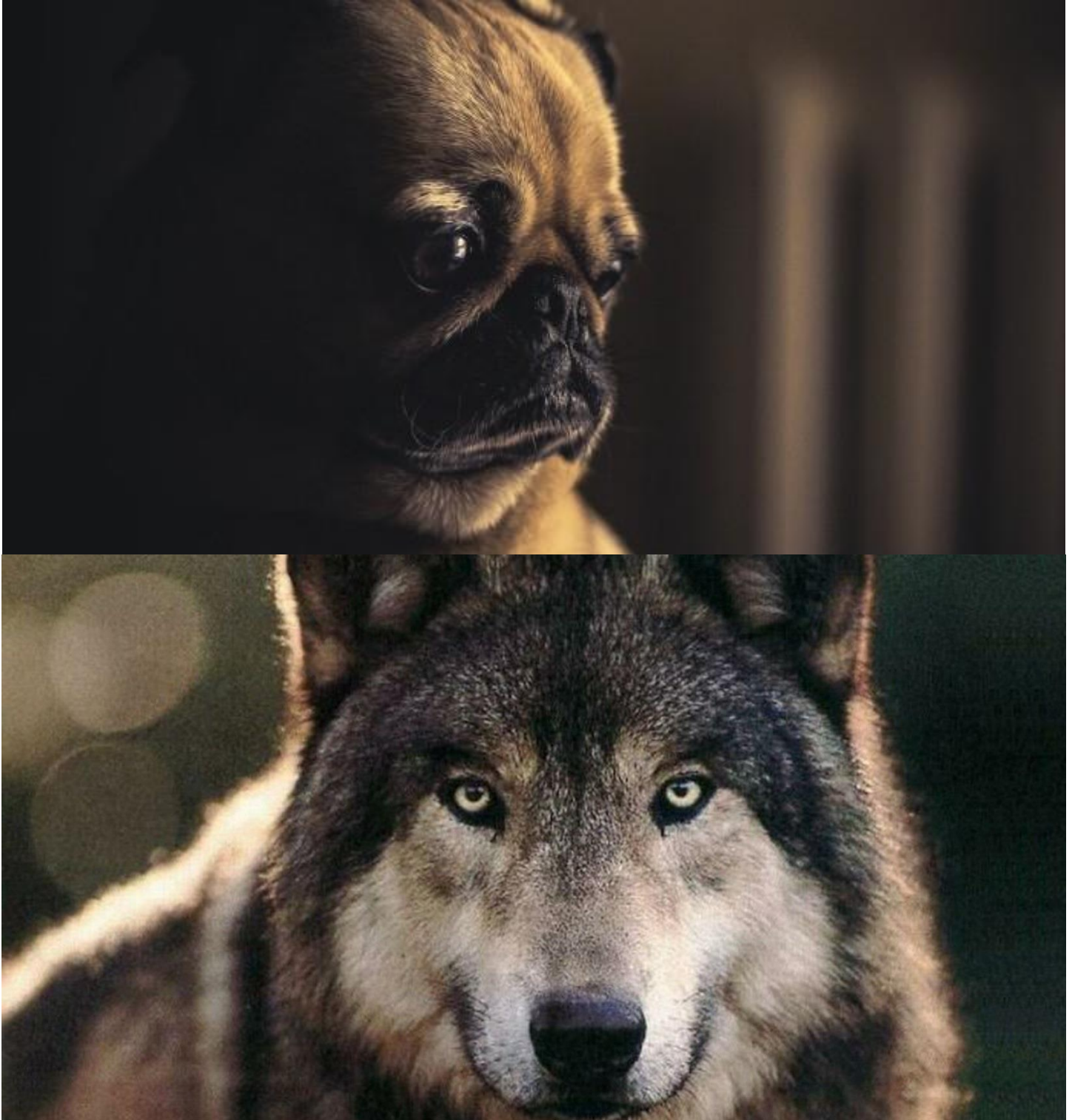




MAN'S BEST FRIEND



MAN'S BEST FRIEND



MAN'S BEST FRIEND





MAN'S BEST FRIEND



