

SAVE THE WORLD



NICK FINK CARLIN JAMES

TURNER RISK

PHENOMENON FILMWORKS PRESENTS A FILM BY MICHAEL DAILEY

SEAN CRUZ RORY HART MICHAEL HUEY MARIA TRINIDAD CRUZ
PETER ADRIA SUDARSO QURON KEITH MINSOO LEE AND TORU UCHIKADO
WITH ANN HENDERSON-STIRES SHIRL GREGORY DEREK ALLISON ARIES SANDERS
MUSIC DARA TAYLOR SOUND KEVIN CHANN PRODUCTION DESIGNER BRIANNA LAZATIN
VISUAL EFFECTS BY SEAN GARRITY DIRECTOR OF PHOTOGRAPHY M. SEAN BRODIE
PRODUCED BY MICHAEL DAILEY AND MORGAN LINTZ ASSOCIATE PRODUCER DEAN THOMPSON
EXECUTIVE PRODUCER MICHAEL HA WRITTEN & EDITED BY MICHAEL DAILEY AND MORGAN LINTZ
DIRECTED BY MICHAEL DAILEY

A PHENOMENON  FILMWORKS PICTURE

LOGLINE

An unemployed young man trying to get his life in order teams up with his high school nemesis and a new friend to stop his long-bullied roommate from committing a deadly rampage.

SHORT SYNOPSIS

Turner Risk has been the victim of bullying since a young age. One day he decides to strike back by clearing out all the negatives in his life to effectively reboot his world. When his deadly plan becomes clear, his only friend, Robbie Cruz, jobless and struggling to make ends meet, teams up with his new companion Seth and high school nemesis Conner to stop Turner. But first they have to find him - and they have no idea where he is. Thus begins their longest journey together: a day of sudden tragedies and, ultimately, of unexpected revelations.

SYNOPSIS

Turner Risk has been the victim of bullying since a young age. One day he decides to strike back by clearing out all the negatives in his life to effectively reboot his world. When his deadly plan becomes clear, his only friend, Robbie Cruz, jobless and struggling to make ends meet, teams up with his new companion Seth and high school nemesis Conner to stop Turner. But first they have to find him - and they have no idea where he is. Thus begins their longest journey together: a day of sudden tragedies and, ultimately, of unexpected revelations.

Turner Risk is a tale of modern day millennials just entering adulthood and how they cope with the challenges the world brings them - challenges they are not quite ready to face. But look closer to see many of the current issues we all face today, which these young men and women are forced to face head on.

Turner Risk features a diverse cast of rising stars Nick Fink (*The Great and the Small*, *Sweet/Vicious*, *Criminal Minds*), Carlin James (*Better Call Saul*, *Dear White People*, *Criminal Minds*), Rory Hart (*Hawaii Five-O*), Peter Adrian Sudarso (*Power Rangers Ninja Steel*), and Toru Uchikado (*Heroes Reborn*), as well as established Australian actress Ann Henderson-Stires (*Sons and Daughters*).

"We all want to make the world a better place. But no one can change the world, really. We can only change ourselves. And Turner Risk, he couldn't do that. So here we are..."



DIRECTOR'S STATEMENT

Turner Risk began in a walk home from kindergarten with a classmate I'll call, well, Turner Risk. He was a very thin, nervous fellow, bespectacled, bucktoothed, socially awkward, and prone to unintentional quivering. But I didn't care. He was one of my first friends. In kindergarten, he functioned naturally, his idiosyncrasies virtually unnoticed by our classmates. But as one grade subsided to the next, other students picked up his quirks and decided he was not "normal" by their standards. Turner was then thrust into a tornado of intolerance, simply because he was deemed different. Our relationship is the core of the film.

Turner Risk focuses on a single eventful day in the lives of Turner and Robbie Cruz, Turner's only friend. Both are at a pivotal point in their lives: Turner seeks to re-boot his life by removing all the negative forces in it, while Robbie struggles to find a job and sustain his independent lifestyle. Both make decisions that ultimately interconnect - as they have for years - but now they are mostly reaching for *change*, unaware of the exponential impact change can cause.

Turner Risk is my first feature as writer/director after years of creating short films. I approach every film with the idea that a unique design is needed to support its story. *Turner Risk*, for example, reflects a modern spin on the bold, innovative works of the 1970s, so I chose to capture their essence in a neoclassic way. I am also fortunate to have experienced real industry film productions and learn the intricacies of screenwriting through studies with Syd Field and William Goldman. I suppose the most telling impact of my passion is that when I dream, I am fully aware of setting up every shot and angle. I literally dream movies.

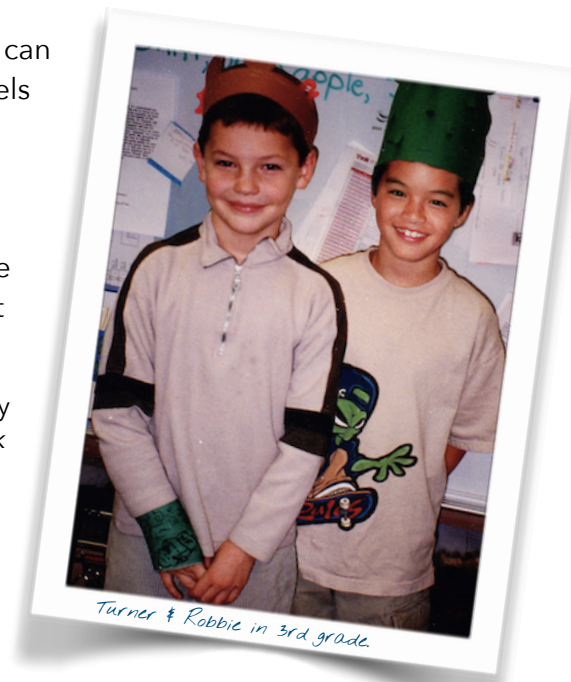
But *Turner Risk* is the product of many - and our collaboration was electric. Each day was profoundly fun and productive, my creative team working tirelessly to support a vision we all shared. In that way, each of them was a leader, and their efforts can be seen in every shot, every scene, every stage of production. The young actors performed with an energy that can only be described as "nuclear": they were hungry to play characters that pushed their limits, produced real laughter and tears. And Dara Taylor's beautiful score perfectly captured the sensitivity of our story. Simply put, *Turner Risk* is all of us.

The overall experience I'm most trying to communicate through *Turner Risk* is that life is an adventure that can never be calculated. Instead, it is impulsive as hell - and *how* we confront the many challenges it brings fuels our endurance and affirms our independence. With that in mind, Morgan Lintz and I built our script on the belief that each of the character's triumphs and failures are universal. Authenticity was key, so we relied on personal experiences and meticulously crafted our characters as hybrids of real someones we knew.

While this film can sometimes be brutal, it's rooted in beginnings, change, and how inadvertently funny life can be in even the most trying times. At its core, I wanted the film to connect with a big audience, to assert a progressive and innovative way of promoting one of the most essential human attributes: Tolerance.

Michael Dailey
Director of *Turner Risk*

"Bullies breed bullies. They always gang up, all against one."
- Turner Risk



C R E W



MICHAEL DAILEY

DIRECTOR / WRITER / PRODUCER / EDITOR

Michael Dailey is an Irish-American director, editor, and screenwriter best known for his short "The Backpack" and premier feature *Turner Risk*. Dailey filmed his first award-winning shorts at an early age: "Twister," about a tornado sweeping through a summer camp, and "Quietus," which focused on youth gangs during a small town religious conflict. While teaching film to future filmmakers, Dailey

studied with screenwriting gurus Syd Field and William Goldman, then began designing his first independent productions. In 2011 Dailey co-founded Phenomenon Filmworks - its mission to develop projects that embrace open, diverse casting and thoroughly original storylines showcasing intensive acting. Dailey is currently in the planning stages for several upcoming short and feature films.



M. SEAN BRODIE

DIRECTOR OF PHOTOGRAPHY

Inspired by the works of honored cinematographers Caleb Deschanel and Vilmos Zsigmond, among others, California native M. Sean Brodie realizes the importance of telling the

film's story in each shot. To best capture the essence of realism, he has mastered the art of practical lighting by manipulating the available light available in a shot to compose his images. After completing numerous short student films, *Turner Risk* remains his first feature - but certainly not last - work behind the camera.

MORGAN LINTZ

WRITER / PRODUCER / EDITOR

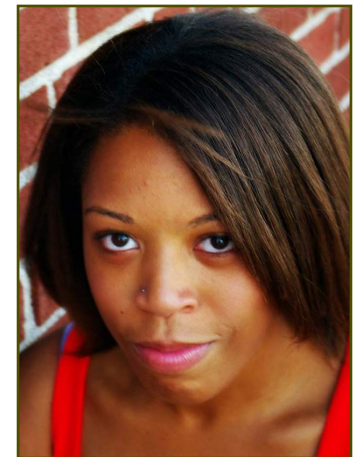
Co-writer of *Turner Risk* Morgan Lintz hails from Newport Beach, California. After taking film courses at University of Arizona and Cal State Long Beach, Lintz began developing film storylines that stressed story and characterization. Serving as a consultant and story advisor for an episode of the FX series *The Strain*, Lintz also wrote and produced "Wrong Place," winner of The Loft Short Film Festival, and co-wrote a short documentary called "The Second Stage." Lintz is currently working with Michael Dailey on their next productions.



DARA TAYLOR

COMPOSER

Dara Taylor is an HMMA-nominated composer for film and television based in Los Angeles. She has composed music for a wide variety of Independent thrillers, dramas, comedies and and has done additional music, arrangements and score production for large studio productions like *A Bad Moms Christmas*, *Baywatch*, *Sausage Party*, ABC's *Galavant*, and more. In 2015, she was nominated



for a Hollywood Music in Media Award for her *Undetectable* film score, and a year later, she took part in the Women in Film's Women Composers in Media concert. In addition to her studies at Cornell, Taylor received a Masters of Music from New York University, where she studied Film Music Composition with Mark Suozzo.

LEAD CAST

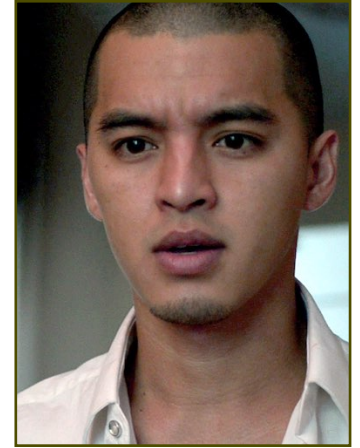


NICK FINK
TURNER RISK

Fargo, North Dakota, native Nick Fink trekked to Los Angeles to compete on *American Idol*, making it through to the Hollywood callbacks. Since *Idol*, he picked up a regular role for MTV's *Sweet/Vicious*, guest starring roles on CBS's *The Mentalist* and *Criminal Minds*, a co-starring role on FX's *Justified*, and lead in the independent films *Trace* and *The Great and The Small*, along with Melanie

Lynskey, Ritchie Coster, and Ann Dowd, which garnered acclaim on the festival circuit.

CARLIN JAMES
ROBBIE CRUZ



Carlin James was born and raised in the north side of Long Beach, California. A Film-Am actor who has appeared in numerous commercials and TV shows, he most notably played the older brother of Andrew Cunanan in FX's *The Assassination of Gianni Versace: American Crime Story*. Recently he has also appeared on CBS's *NCIS*, *Criminal Minds*, ABC's *The Middle*, and Netflix's *Dear White People*. Most recently Carlin appeared in the features *Indivisible* and *Brampton's Own*.



SEAN CRUZ
SETH HSU

After making his first appearance in *Turner Risk*, Sean played the lead in the short "Rude Boy" and is currently a member of the Gay Men's Chorus of Los Angeles Gay Men's Choir, recently appearing with Alan Cumming.

RORY HART
CONNER HUDSON



Rory Hart lives in Hawaii. After acting in the short "Byte-Sized," and the TV movie *Roomies*, he recently appeared in a brief but notable stint on the current TV series *Hawaii Five-O* as the "eccentric" med tech Nohea Eona.

OTHER CAST HIGHLIGHTS

ANN HENDERSON-STIRES
CALDWELL

A distinguished Australian actress, Ann is particularly noted for her work on the Aussie TV show *Sons & Daughters*.

TORU UCHIKADO
TOSHI

Playing Ren Shimosawa on *Heroes Reborn* was a dream come true for Toru Uchikado, who plays Toshi in our film.

PETER ADRIAN SUDARSO
DAVID HUDSON

Peter Adrian Sudarso is an online model and actor currently appearing as Preston, the Blue Ninja Power Ranger on the Nickelodeon series.

PRODUCTION NOTES

Casting.

When casting *Turner Risk*, we had no set decisions on the look of any character. We focused instead on talent, particularly since the story was very demanding. That resulted in our highly diverse cast. But the film never focuses on that. Instead, they are all ultimately connected and equally immersed in the story's tragic events.

The Ensemble.

A strong supporting cast of both rising and seasoned stars bring our story to life. Some were first-time actors. Others had appeared in commercials or background film and TV work. But their united dedication to the film and to their characters is unforgettable.



Turner & Robbie. Nick & Carlin.

Turner Risk and Robbie Cruz are having a hell of a day. The climax of their struggles erupts in their climactic encounter. Nick Fink expertly portrays Turner's troubled personality and his uneasy adjustment to a more autonomous self. Likewise, Carlin James perfectly captures Robbie's conflicted determination to make all things right. Both deliver powerful performances matched by a mutually talented ensemble of rising stars.



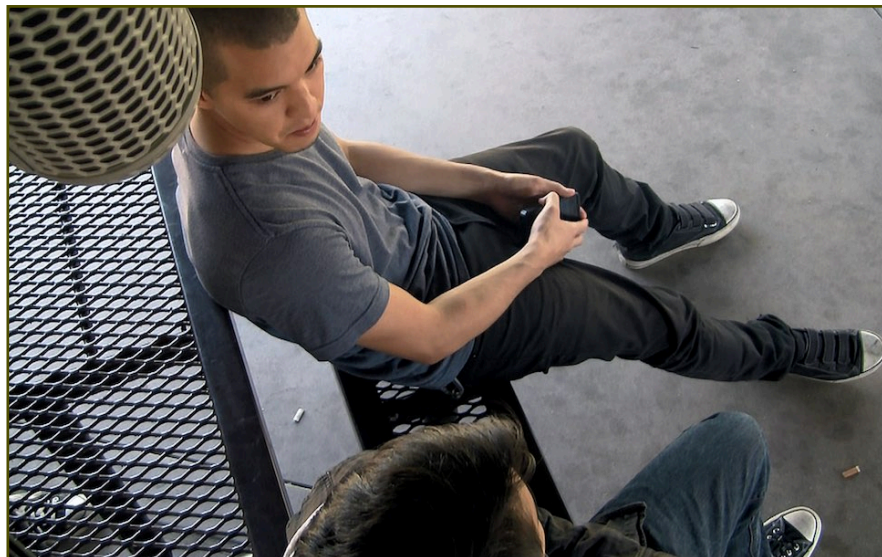
Composition.

Every single shot of *Turner Risk* was meticulously crafted. The use of practical lighting enabled cinematographer M. Sean Brodie to enhance the realistic edge of the film. Nighttime parking lot lights, sunlight flickering through car windows, shadowy room light, and more - all contribute to the film's unique aesthetics.



The Story.

To capture Turner's experience, we focus only on his actions at the start of the film, then slowly reveal more and more of his real character and backstory as the film progresses. In that way we hoped to spark the same kind of instant judgment a bully might embrace instead of supporting, as Robbie later explains, "the Turner that could have been... the one that was hiding from you."



Sound Design.

For the sound design for *Turner Risk*, we had two objectives in mind: capture the spirit of retro films by relying on boom mics rather than lavs and process the most realistic sound for the scene's environment. For example, a park scene takes place mostly in a gazebo-style shelter, which creates its own immersive, unique tonal echo, which we strained to capture. Likewise, dialogue recorded in Robbie's cavernous living room required a realistic reverb as voices penetrated the open space. Another scene in a park bathroom captured the muddled echo found in such small concrete structures. The result heightens both the realism and contributes to the tension of the scenes. The peaceful quiet of a forest, the roar of a busy beach, the wind rustling through nervous leaves - all play their part in telling the story of *Turner Risk*.

TRIVIA

- The name “Turner Risk” was created by summing up the title character as “turning his life around” and “taking risks.”
- The film begins and ends with a montage that introduces the characters’ innocence and ends with those left without it.
- Several scenes of *Turner Risk* take place in cars, which serve as cocoons from the harsh realities of the outside world.
- Nick Fink learned to drive stick, and in one scene, he set Turner’s SUV in reverse just in time to prevent it from careening over a cliff.
- Throughout *Turner Risk*, women like Bree are in powerful positions, ultimately making decisions that unexpectedly impact the characters’ lives.
- The motifs of classical music and nature symbolize Turner’s desired escape to a more peaceful state of being.
- Light also plays an important part in the film. Turner’s scenes are mostly shaded, or set in dark areas, while Robbie’s are aglow with almost surrealistic light.
- Some of the filming was done in an actual wildlife preserve. There the actors and crew faced tepid heat, incessant insects – and no bathrooms.
- A real gun and its exact replica were interchanged for the last act of the film.
- Before shooting in the park bathroom, a black widow spider had to be expelled from one stall.
- During a murder scene modeled after a killing in *The Godfather*, a car window was accidentally cracked by a barefoot. Only the window suffered injuries.
- The climactic encounter between Turner and Robbie was so emotionally draining for the actors it was shot over three days.
- To ensure authenticity, actual police officer David Williams appears in uniform near the film’s end.

“Be the tree.”

- Joey Riago

C R E D I T S

CAST

TURNER RISK
ROBBIE CRUZ
SETH HSU
CONNER HUDSON
JOEY RIAGO
BREE
DAVID HUDSON
BRIAN
PARK
TOSHI
CALDWELL
BRIAN'S MOM
BRAD
THE HR LADY
BREE'S FRIEND
POLICE OFFICER
CONNER'S MOM
SETH'S MOTHER
SETH'S FATHER

BOY

NICK FINK
CARLIN JAMES
SEAN CRUZ
RORY HART
MICHAEL HUEY
MARIA TRINIDAD CRUZ
PETER ADRIAN SUDARSO
QURON KEITH
MINSOO LEE
TORU UCHIKADO
ANN HENDERSON-STIRES
SHIRL GREGORY
DEREK ALLISON
ARIES SANDERS
AIMEE LEE LUCAS
DAVID WILLIAMS
SUSAN TANIGUCHI
PAZ CRUZ
ALBERT CRUZ

OTHER CAST
KAZUTO SHIOJIMA

SCREENPLAY

MICHAEL DAILEY & MORGAN LINTZ

DIRECTOR OF PHOTOGRAPHY

M. SEAN BRODY

EDITORS

MICHAEL DAILEY & MORGAN LINTZ

MUSIC

DARA TAYLOR

CASTING

HAILEY MILFORD

PRODUCERS

MICHAEL DAILEY
MORGAN LINTZ

EXECUTIVE PRODUCER

MICHAEL HA

ASSOCIATE PRODUCER

DEAN THOMPSON

CASTING

HAILEY MILFORD

PRODUCTION DESIGN

BREE LAZATIN

SET DECORATION

STACIE SCHAFFER

PRODUCTION MANAGEMENT

ASSISTANT DIRECTOR

FRANK EMIS

SECOND ASSISTANT DIRECTOR

CHARLIE MAGDALENO

PRODUCTION ASSISTANT

TREVOR WALL

SOUND

BOOM OPERATOR

KEVIN CHANN

SOUND EDITOR

EVAN HAYASHI

SOUND RECORDISTS

EUGENE KANG

DAVID KIM

SOUND DESIGNER

CHRISTOPHER PAN

SPECIAL EFFECTS

VISUAL EFFECTS SUPERVISOR

SEAN GARRITY

CAMERA & ELECTRICAL DEPARTMENT

ADDITIONAL PHOTOGRAPHY

MAX LEE

ANDREW THOMPSON

GAFFER

ANALIESE YU

GRIP

DAVID SOLIVEN

EDITORIAL DEPARTMENT

COLORIST

M. SEAN BRODIE

OTHER CREW

SCRIPT SUPERVISOR

ALISSA PARK

CATALOGUER

THANZIN NAING



T E C H N I C A L D E T A I L S

ORIGINAL TITLE: **TURNER RISK** PRODUCTION YEAR: **2018** PRODUCTION COUNTRY: **USA** LANGUAGE: **English** TOTAL RUN TIME: **112 Minutes**

FORMAT: **1:1.85, 24 FPS / 2K, HD / 5.1 DOLBY DIGITAL** EXHIBITION FORMATS: **DCP (NTSC), BLU-RAY, DVD, .MOV**



Tomorrow.

“We have no choice but to stand strong no matter what comes.
Keep moving forward. Move into traffic. Don’t look back.”

- Robbie Cruz

PHENOMENON  FILMWORKS

PRODUCTION CONTACTS

EMAIL: PHENOMENONFILMWORKS@ME.COM

CELL: 714.381.6734 (USA)

WEBSITE: PHENOMENONFILMWORKS.COM