



NESTS

O F G L A S S + S T E E L

A MATT BIGGS FILM

Film / Animation | 2018 | 4.14 mins | UK | 4K

Contact Matt Biggs T: 44 (0) 1237 420 536

M: 44 (0) 7794 615104

matt.artaura@gmail.com

[@ArtauraFilms](https://www.instagram.com/ArtauraFilms)

4K
UHD

Film / Animation | 2018 | Runtime 4.14 mins | UK | 4K | Colour |

Synopsis

From silent glass towers in the clouds Kings and Queens survey the world they control below. The near future viewed through the eyes of a micro-surveillance drone as the colony sleepwalks through its daily routine. George Orwell's 1984 meets Kong.

Film Screener <https://vimeo.com/279645537> Password: ARTAURA



Credits

Cinematography | Animation | VFX | Matt Biggs

Music | Chance | Kai Engel

Cast Isaac | Tom Biggs | Drone Pilot | Joanna Ford

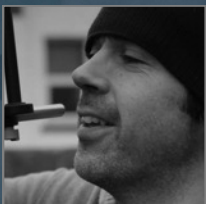
Additional vocal samples | Riley Hewitt

Additional sound effects | __stone__ | cylon8472 | Wakerone | MSFX | Robinhood76

www.freesound.org

Produced by Artaura Productions www.artaura.co.uk

Vimeo @ArturaFilms



Matt Biggs Bio

Matt is an independent filmmaker and VFX artist based in North Devon. Most of his commercial film work is educational and documentary. Matt has worked all over the world but is firmly rooted to the rugged North Devon coast where he also runs film and animation workshops in several local schools.

Last summer I spent two days filming interviews on floor 27 of the Shard in London. During breaks I filmed what ever caught my eye out of the windows. The whole experience was quite surreal, cocooned in a totally silent room behind self cleaning glass you started to question if the whole of the vista below was real. Perhaps I've just spent too long reading Manga and SiFi?! The idea for the film happened very quickly while on the train heading back to the West Country. The obvious wealth generated by multi national companies that has created the London skyline of glass and steel soon changes as the train glides through the suburbs.

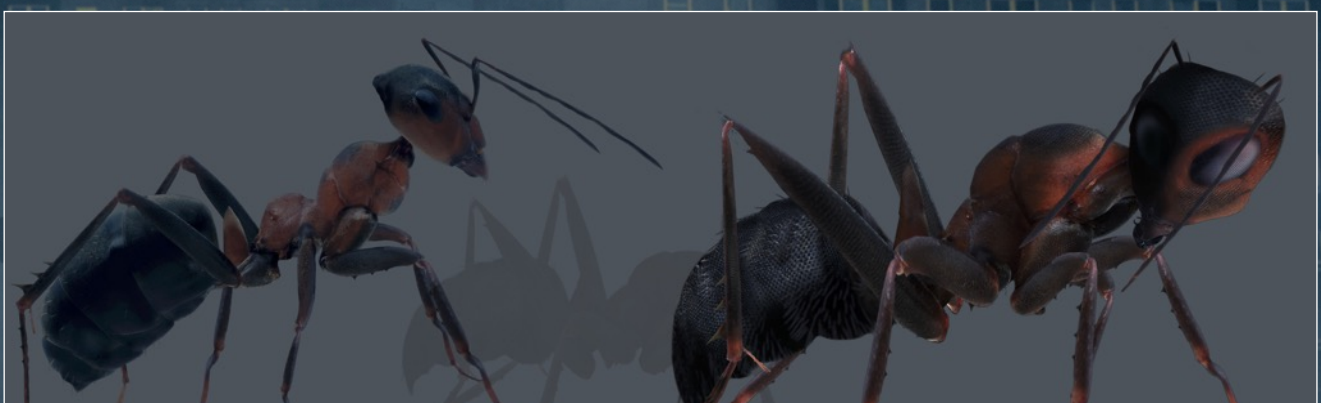
The Process

The look of the film very much reflects my love of the classic monster movies; Kong, Godzilla and Cloverfield. With this film I didn't limit myself to one creature at a set size, all the ants are different. I cut from macro shots at almost actual size to a 500ft high insect towering above the skyline. All of the back plates were shot in 4k. I tried where ever possible, to use original elements from the footage in all of the compositing. I didn't actually film any plates with the sun setting or at night so creating those looks was a mammoth task.



Animation

The challenge with animating the various ants that inhabit the capital was conveying the sense of scale. My early animation tests were based on macro footage of real ants. When the ants were upscaled to the size of buildings, the movement looked almost comical and the whole insect lacked weight. I ended up with a movement based on a slow crab like creature.



Film Posters



A3 300dpi film posters



One sheet 250dpi film poster



Early Concept artwork



One sheet 250dpi film poster

Screening formats

The film is available in 4k and 2K DCP (24 & 25p)
.mov 4k, 2k, HD (1920x1080) H264 and ProResHQ422
If you require another format please get in touch.

Press

Matt Biggs T: 44 (0) 1237 420 536
M: 44 (0) 7794 615104
matt.artaura@gmail.com