



## VIDEOS NARCISSUS

Title: **NARCISSUS**

Production Date: 9/19/2015

Type: Experimental Video Art, Kinect Video, 3D Animation

Video: <http://santi.tv/narcissus>

Vimeo: [vimeo.com/139863106](https://vimeo.com/139863106)

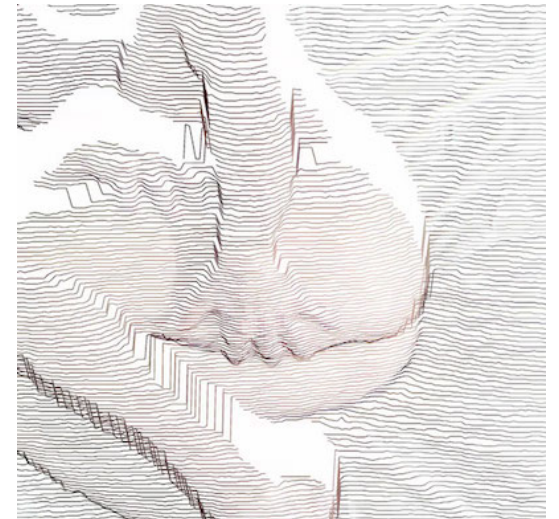
Youtube: [youtu.be/jchQch6-Cj0](https://youtu.be/jchQch6-Cj0)

Performer: **Bradley Edmonds**

Music: **West Strings**

Composed and Performed by:

**Satellite Ensemble**, *Indie Film licensed* through [NeedleDrop.co](http://NeedleDrop.co)



Experimental video created using the Kinect sensor, exploring the nature of love and tension. Inspired by the drawings of Colombian artist Luis Caballero, NARCISSUS was commissioned for the show "Diálogos con la Colección del Museo" at the Museo de Arte Moderno de Bogotá. The ambiguity of perspective in 3D imagery, makes it appear as if the main character in the piece is both lover and loved at the same time, reinforcing the idea of a passionate need that cannot be fulfilled. The music was composed and performed by Satellite Ensemble, and the performer, Bradley Edmonds is a professional athlete and swimmer from FL. Bradley donated his wages for this video to the Smart Ride, a bicycle event where 100% of pledges raised could go back to the communities to be used for direct services, focusing on HIV/AIDS and populations at risk. You can donate too, use his number #59 <https://www.thesmartride.org/>

NARCISO es un video experimental creado usando el sensor Kinect, que explora la naturaleza del amor y la tensión en la línea. Inspirado en la obra de Luis Caballero (1943-1995), este video fue creado para participar en la exposición "Diálogos con la Colección del Museo" en el Museo de Arte Moderno de Bogotá. La ambigüedad de la perspectiva en las imágenes 3D hace parecer que el personaje principal es a la vez amante y amado, reforzando la idea de una necesidad

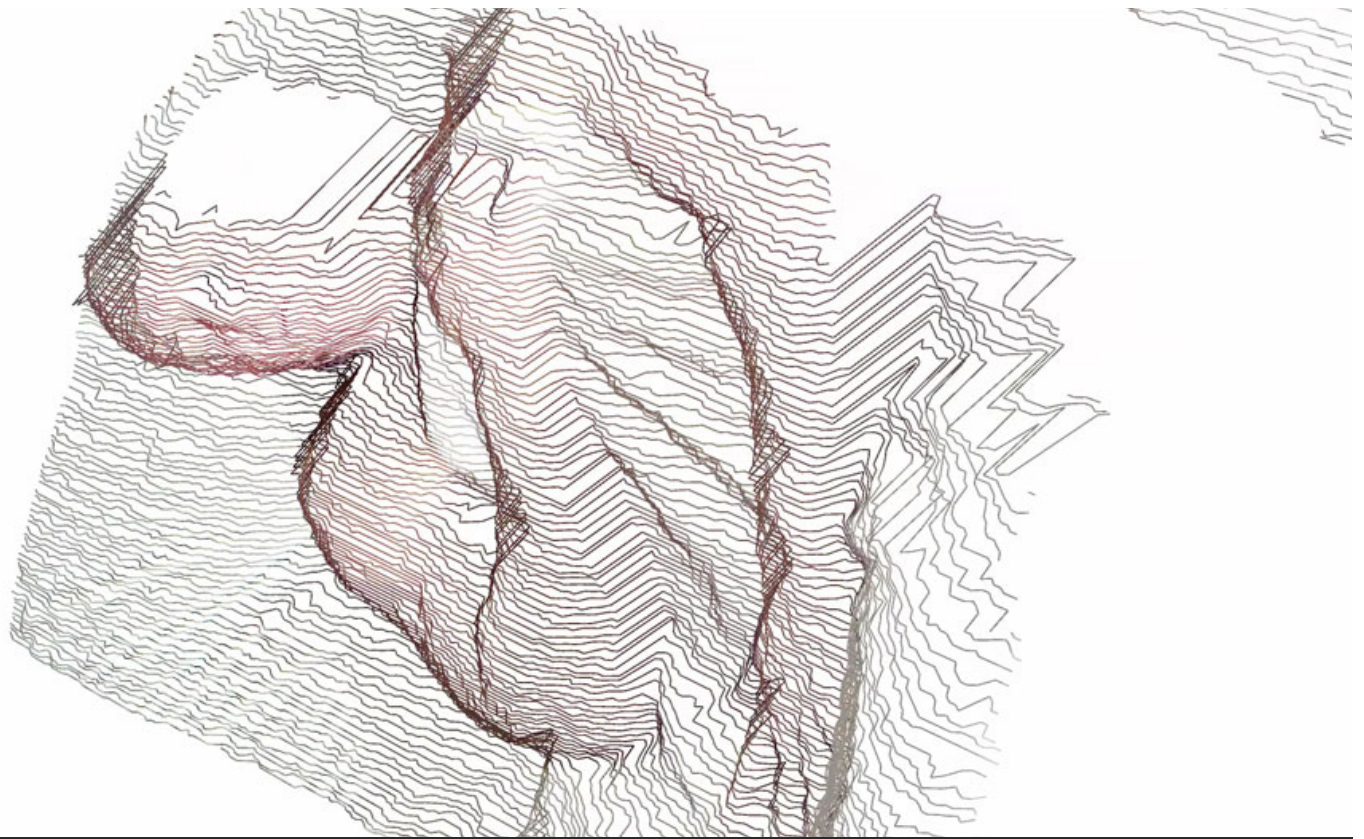
apasionada que no se puede satisfacer. La música fue compuesta e interpretada por *Satellite Ensemble*, y el performer es Bradley Edmonds, nadador y atleta profesional de la Florida.



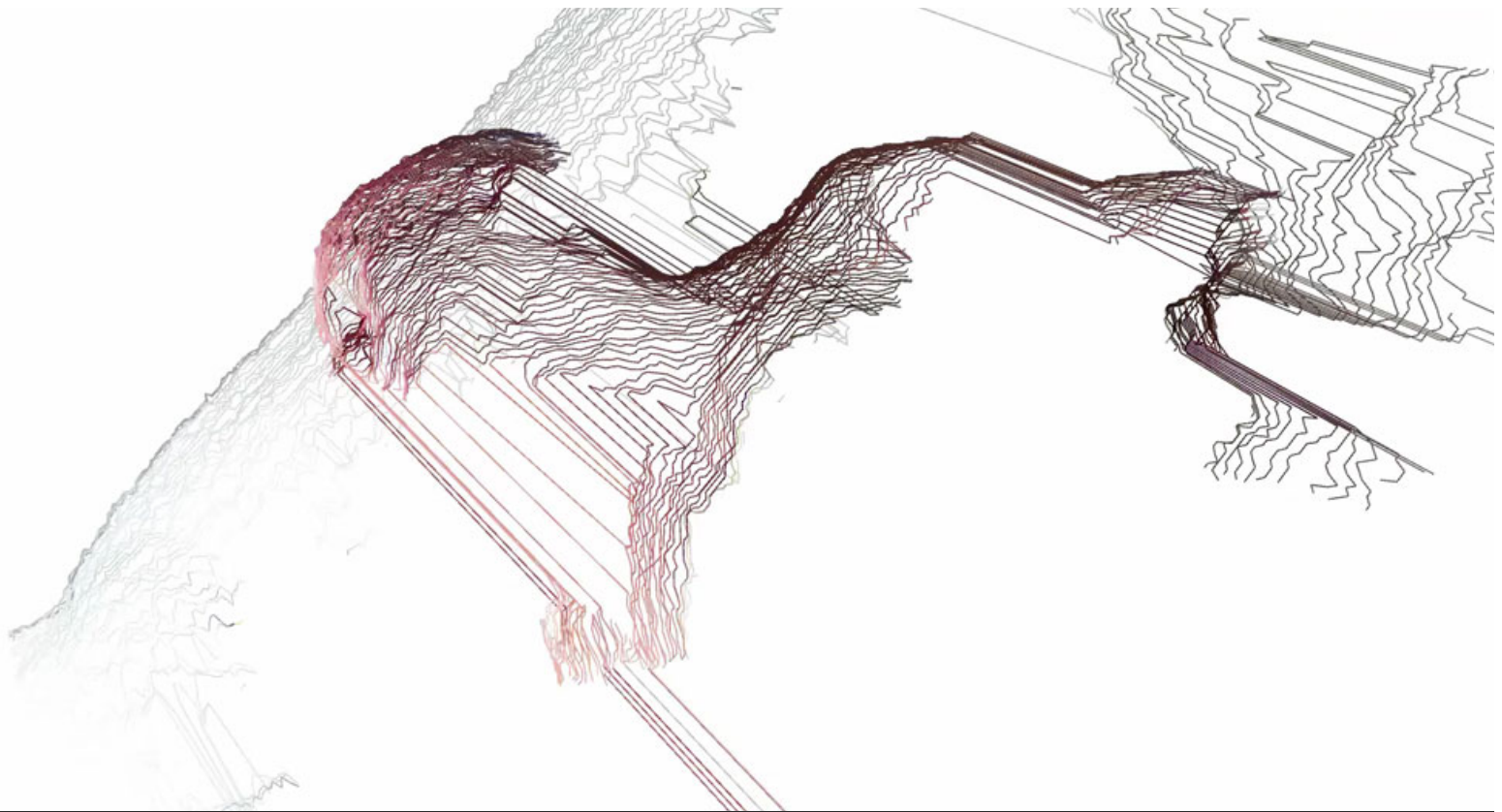
Luis Caballero, 1976,  
Sin Título, Lápiz y pastel sobre papel, 57x76cm, reg 596  
Untitled, pencil and pastel on paper, 22x30", reg 596 Obra que inspiró a Narcissus /  
work that inspired Narcissus

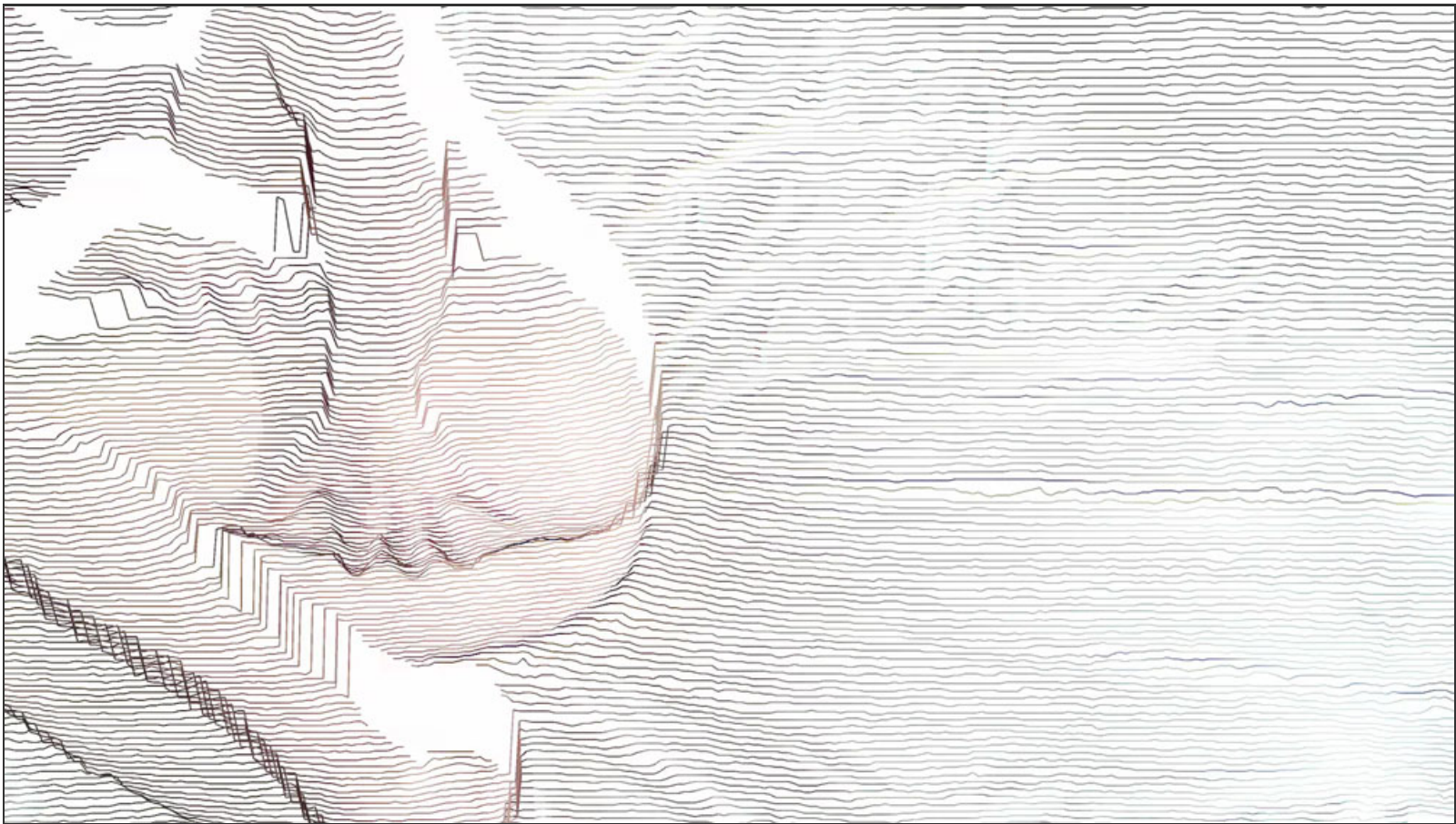
---

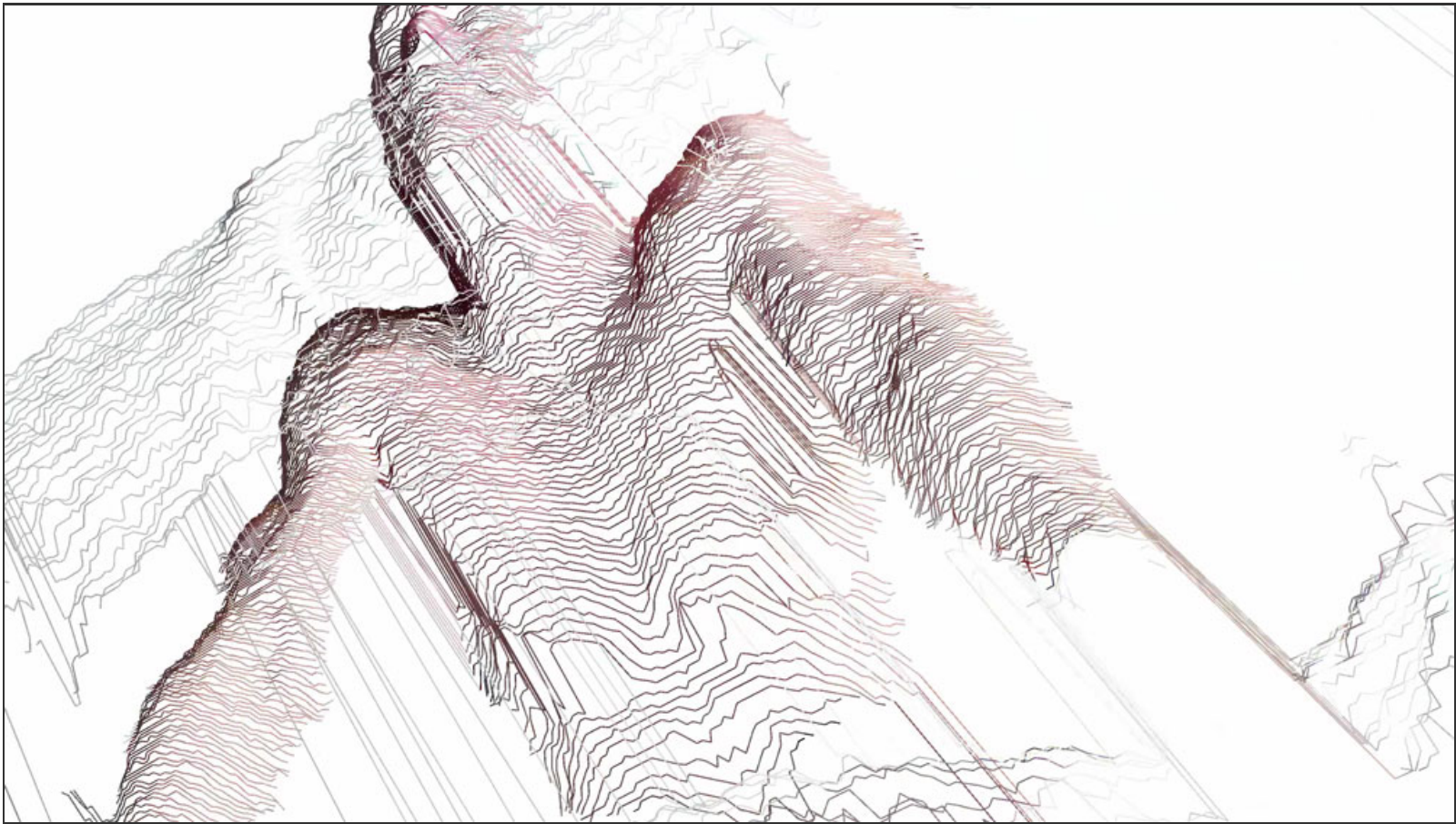
MP4/WEBM Video optimized for mobile equipment  
960x540 2Mbps 80MB

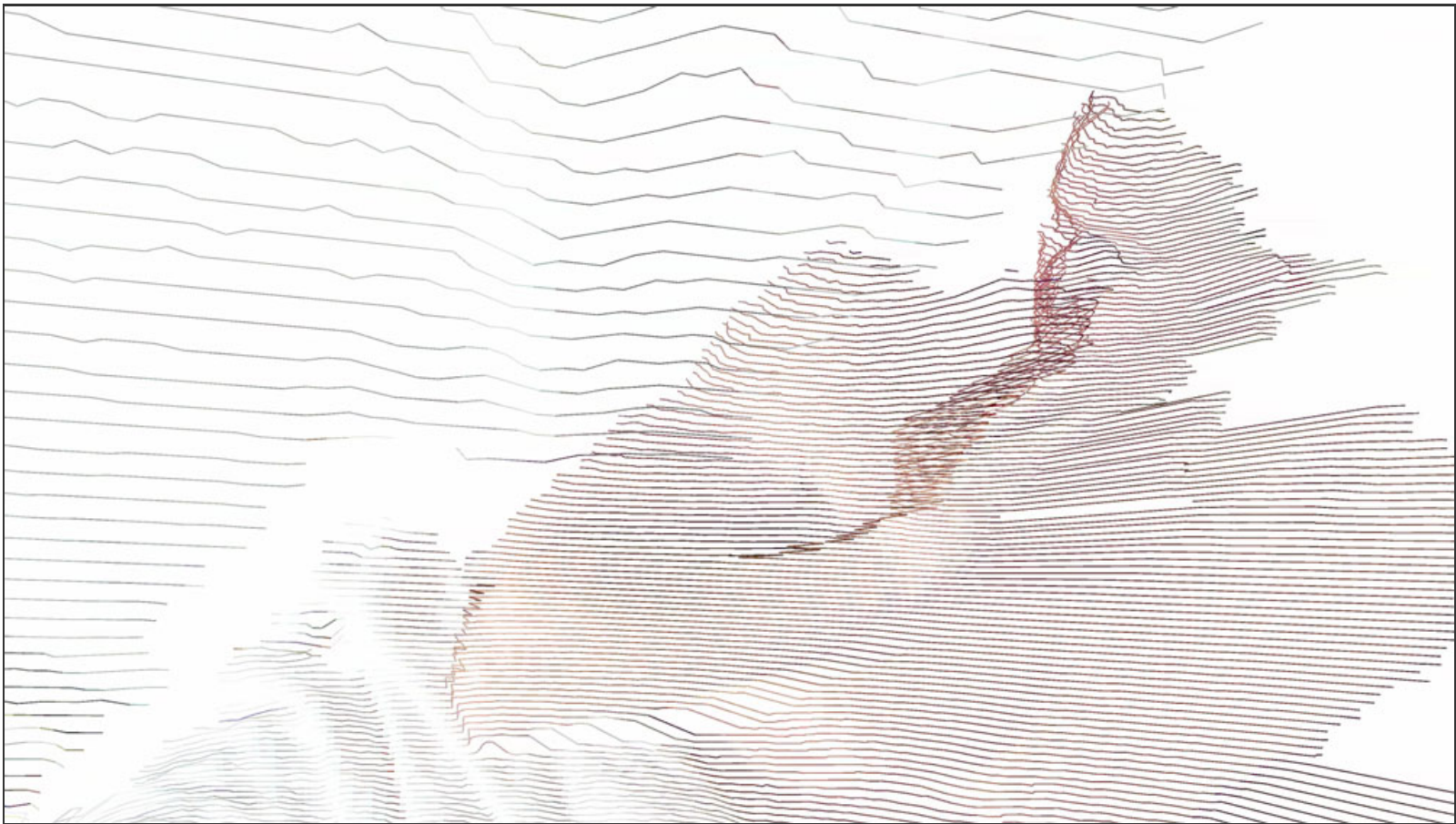
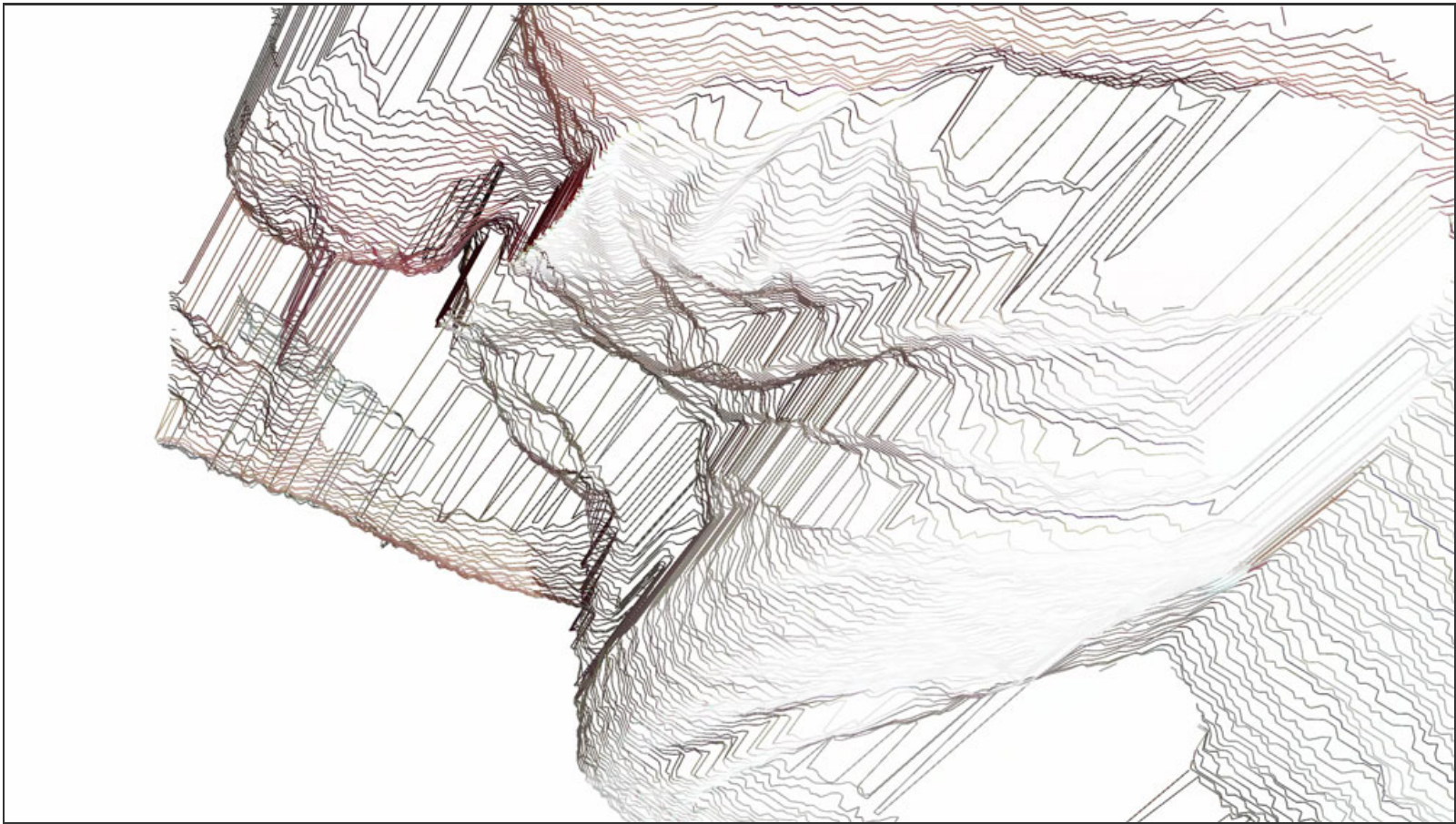


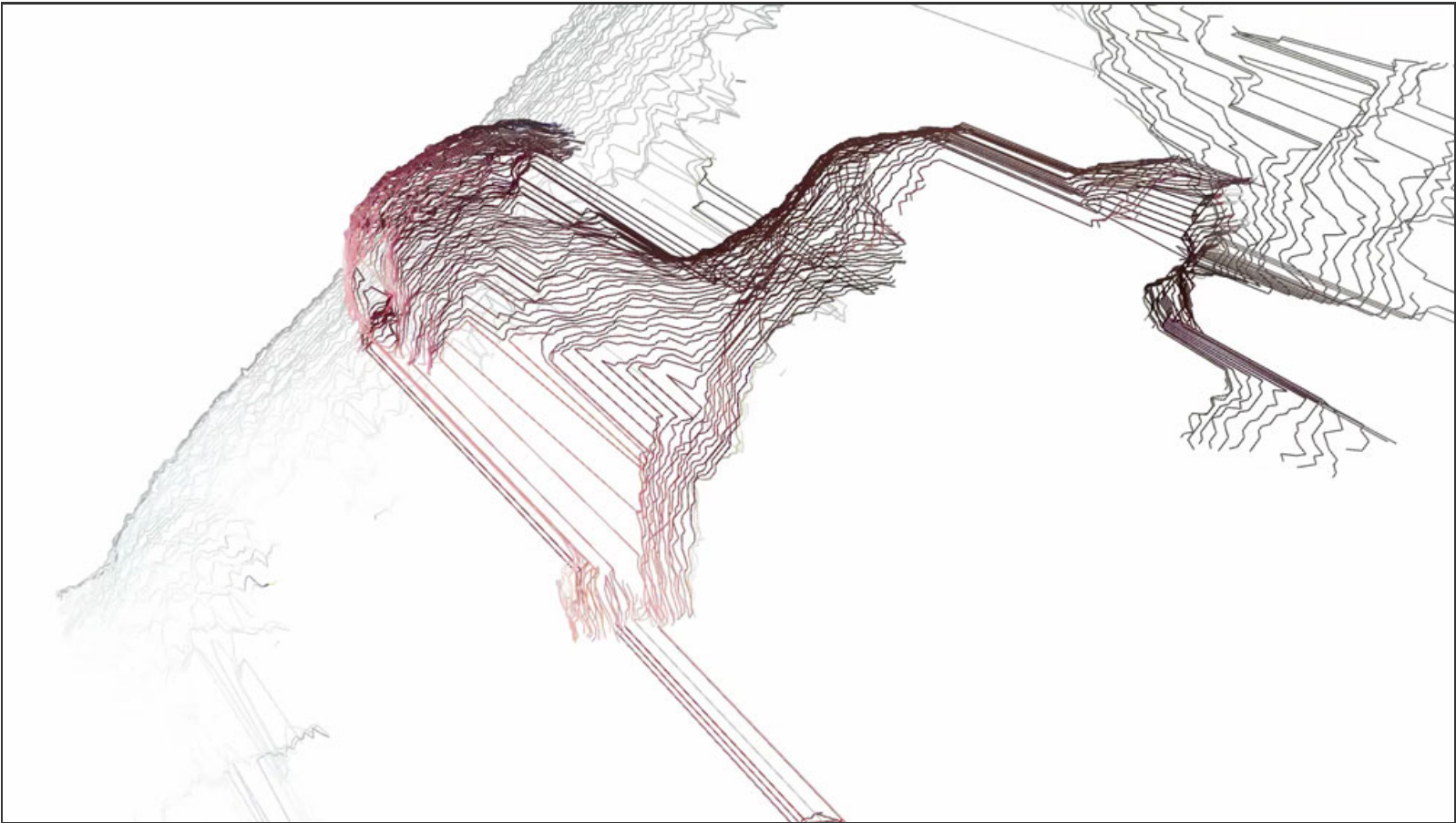
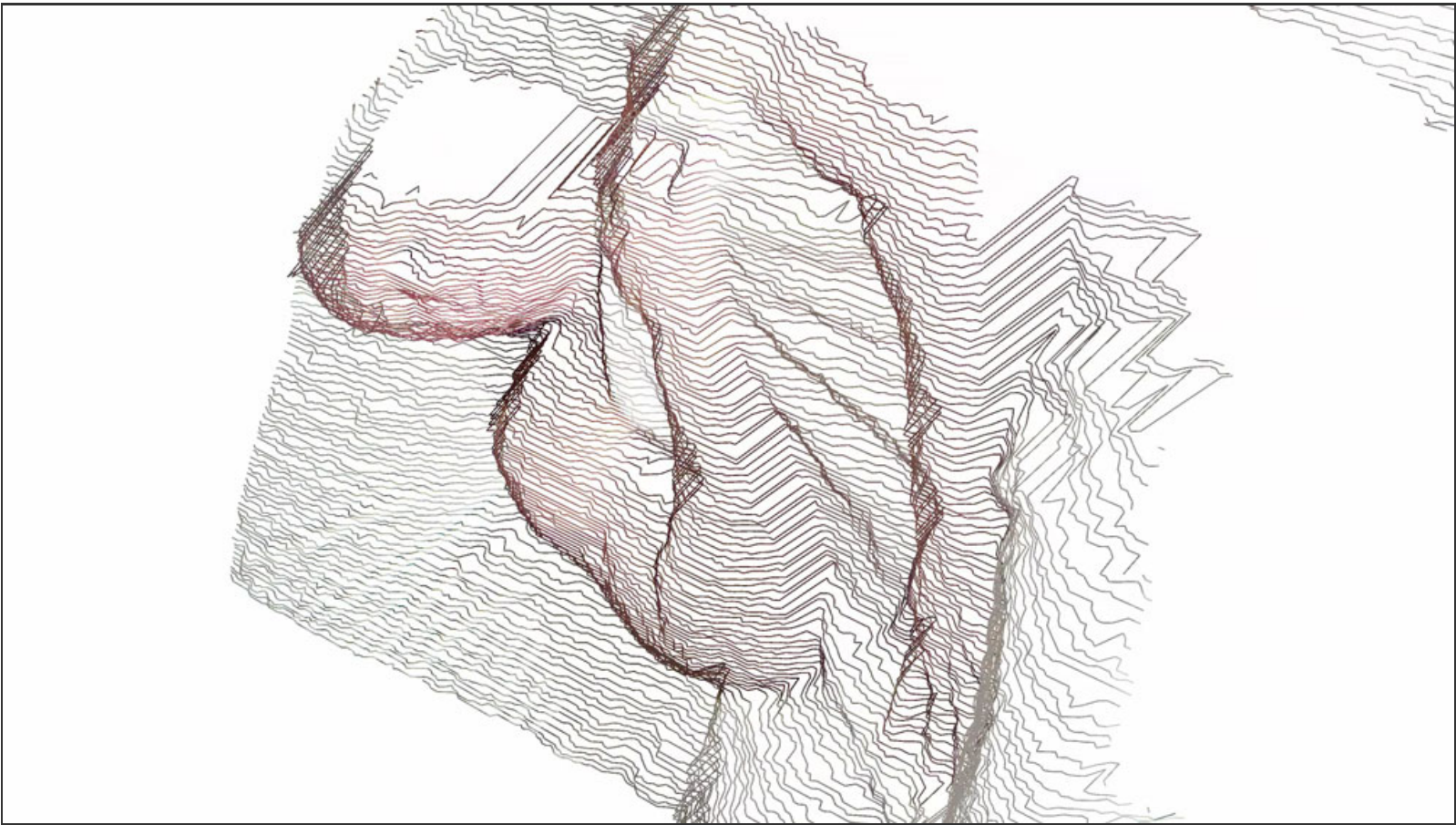
MP4/WEBM Video optimized for desktop  
1280x720 5Mbps 184MB

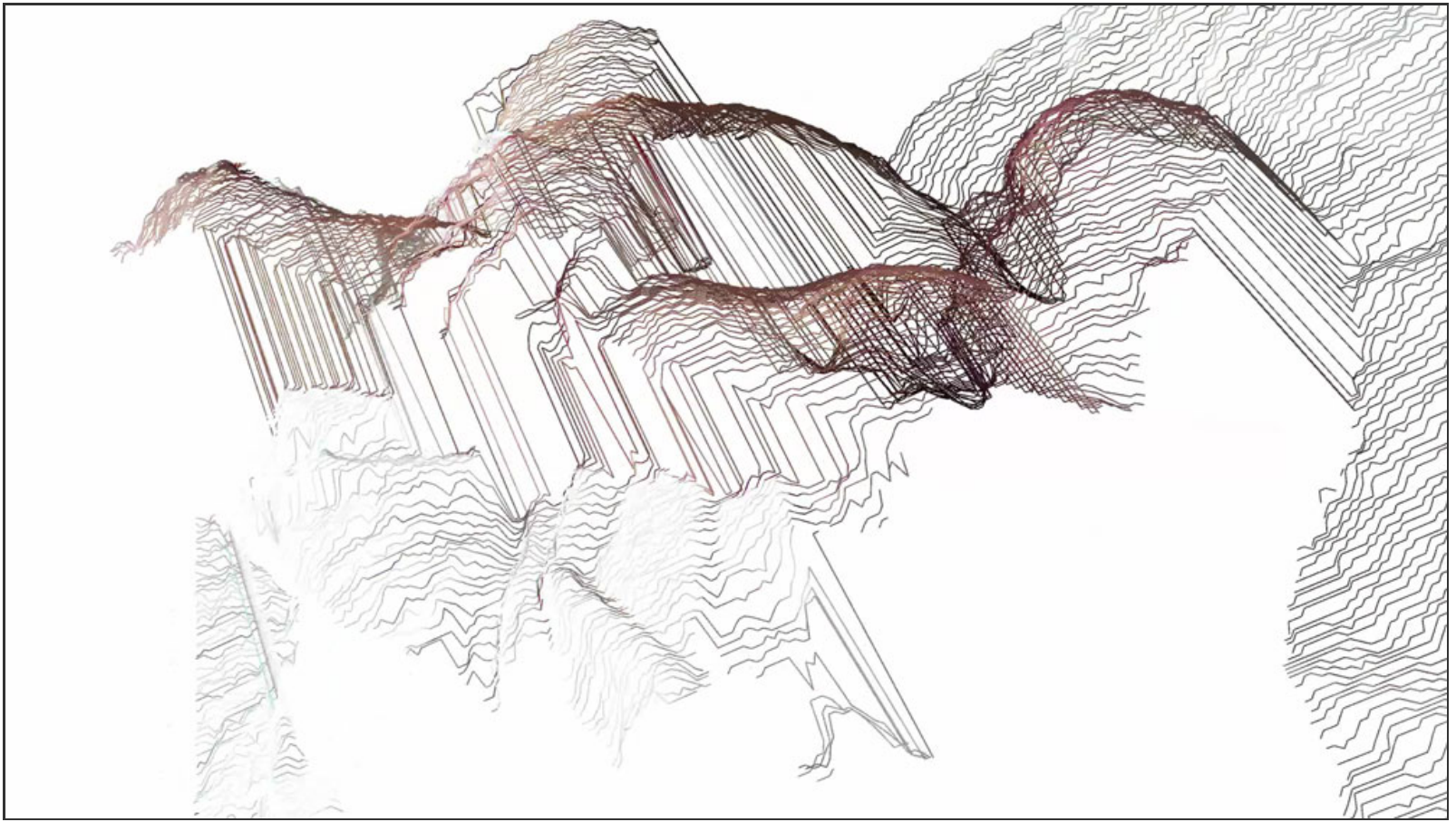












Santiago Echeverry • santi.tv © 2015