

Letters of Support from Industry Professionals



A program of the
Latin Chamber of Commerce,
CANACOL
KAMACOL
1401 West Flagler Street
Miami, FL 33135
MiamiMediaFilmMarket.Org

August 28th, 2024

ATTN: BEVIN BRU

RE: PARK LA BREA

Dear Bevin,

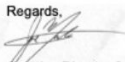
Thank you for sharing your upcoming film project PARK LA BREA with us.

We have reviewed the materials and would like to congratulate you on writing such an impressive screenplay! As an accomplished artist from Miami, we are in full support of your project and are excited to champion your efforts in bringing this important and timely story to big and small screens worldwide.

Please count on us as you continue your artistic journey as an emerging filmmaker while representing Miami as a true "home grown talent."

The world needs more voices like yours.

Regards,


Creative Director & Co-Founder
Miami Media and Film Market

September 2, 2024

I want to express my enthusiastic support for Bevin's original short film. I couldn't be more excited to see her taking this bold step in her career.

Bevin first auditioned for a stage project of mine several years ago and blew me away with her skills as both an actress and a dancer. She delivered beyond my expectations on that show, sustaining her energy and positive attitude while turning in terrific performances night after night throughout an arduous national tour. When it came time to cast a subsequent show that I created a couple of years later, Bevin was my first choice for the lead role. Again, she hit it out of the park.

Not only does Bevin possess formidable acting instincts, but her attitude, professionalism, work ethic and positive spirit were major contributions to both projects. Her presence was infectious and played a major role in elevating the vibe of both projects, grueling national tours. I was thrilled to watch her career develop through *Batwoman*, *57 Seconds* and more, and I followed her progress, cheering from the sidelines, as she continued to land terrific roles.

When I read the script for *Park La Brea*, I found it authentic, engaging and timely and thought it was the perfect next step in her career. It will be a chance for her to showcase not only her acting chops, but also her writing and directing skills, which she has been nourishing throughout her wide-ranging career.

I look forward to the result which I am certain will further reveal Bevin's unique gifts and be another step in her incredible journey.

Enthusiastically,

Glenn Orsher
Glenn Orsher

MIAMI MEDIA

Film Market



Patricia Arias
FOUNDER AND CHIEF EXECUTIVE

Pattie founded the Miami Media and Film Market in 2008 and currently serves as its Chief Executive. She served on the host committee of the first three Miami International Film Festivals, and currently serves as a member of the international jury for the Premios Platino which honors Ibero-American Cinema. Pattie is also a member of Miami Dade College's School of Entertainment & Design Technology Advisory Board.



Jose Luis "JL" Martinez
CO-FOUNDER & CREATIVE DIRECTOR

JL is a producer, consultant and director. Since 2010, through co-founding and creative direction of MMFM he has organized and moderated panels with a wide cross-section of entertainment and media professionals from around the world. His latest projects include the award-winning feature *MARCUS* which he produced, and he executive produced a digital campaign "The Amparo Experience" for The Real Havana Club.

GLENN ORSHER

CEO S2BN and EMC Presents



Glenn Orsher is an award-winning producer and director of live entertainment with over 35 years of experience in all aspects of live productions, spanning music, theater, sports and special events. He was an executive producer of *Spider-Man Turn Off the Dark*, the Broadway spectacular. He was also the executive producer of Melissa Etheridge's one woman Broadway show, *My Window*, which won the GLAAD Media Award for Outstanding Broadway Production.

Dear Sir or Madam,

I am writing to express my full support and offer a strong recommendation for Bevin Bru, an actress I had the pleasure of working with on the TV series *Batwoman*. From the moment Bevin stepped onto our set, she impressed everyone with her professionalism, unwavering dedication, and proactive approach. She consistently came prepared, asked insightful questions, and engaged with the material in ways that elevated both the script and the overall production. She left a lasting impact on everyone, from the crew to the executive producers at Warner Brothers Television.

In my experience, I can honestly say that Bevin is not just an exceptional actress—she is a true storyteller and filmmaker. Her vision, creativity, and ability to understand the bigger picture make her a standout talent. I have complete confidence in her ability to bring this important story to life, and I am certain her work will captivate and inspire audiences.

I am excited to see Bevin continue to shine and make her mark in the industry. She has my wholehearted support, and I have no doubt her future work will be nothing short of remarkable.

Sincerely,
Avi Youabian

Dear reader,

Over the last seven years I have had the absolute pleasure of knowing Bevin Bru and witnessing her evolve, transform and blossom as an incredible artist.

Having been privy to her work as an actress, I am constantly astounded by her passion, dedication, and freedom with which she conducts herself in her field. When she asked me to read the script for *Park La Brea*, I very much expected the same brilliant enthusiasm that I've seen in all of her artistic endeavors. She completely delivered. Bevin is a force of nature.

I am thrilled to support this and future projects in which Bevin expresses her creative facets. Pulling from her own life force, Bevin is fearless in the exposition of that which many prefer to keep hidden within. It takes strength and courage to tell stories like hers, that need to be told as a voice for the voiceless. To not only have written this project and portray the lead character, but to also direct and produce this debut is a daunting feat. I can think of no one better to be at the helm than Bevin Bru. She is meticulously thorough, with an eye for greatness that I rarely see with first time directors. This project is soulful, filled with relevancy, and is in great need to be told.

Bevin is an inspiration to everyone that her light shines upon, Bevin has put together an incredibly talented team to make sure that this story comes to life. Her ability to create and follow through with whatever project she puts her mind to, is a given. Bevin has my complete support and in whatever way I may contribute to this and future projects. I feel it is an honor to be asked –



Adam Milo Smalley
Adammilosmalley@gmail.com

AVI YOUABIAN

Director



Avi Youabian is an award-winning Iranian director who has worked on some of the top-performing shows on broadcast, cable & streaming. Currently working on John Well's new FOX series *Rescue: Hi-Surf* and CBS's hit series *FBI: International*.

He was Nominated for a Primetime Creative Arts Emmy Award for Outstanding Short Form Comedy or Drama Series.

ADAM MILO SMALLEY

Music Department Composer Producer



Adam is veteran in the film industry. He worked as music editor on films such as *Twilight*, *Lion King*, *Gladiator*, *Thin Red Line* and *Mission Impossible*, to name a few. He has been part of the Sundance Film Institute for over a decade as an "Artist Trustee", Adam has had the great fortune to have worked with Carter Burwell, Harry Gregson-Williams and Hans Zimmer, Catherine Hardwicke, Ridley Scott and more.

To Whom It May Concern,

I am writing to throw my full support behind Bevin Bru and her short film, *Park La Brea*. I had the pleasure of directing Bevin on ABC's *Will Trent*. After seeing her talent, work ethic, efficiency on set, and charm, I knew this was an actress I needed to keep close. I invited her to join my acting class, *WorkSpace*, so that I may continue to have the pleasure of watching her work and grow as an actress. Every scene she puts up in class is reimagined and delivered with such passion, joy, and love for the craft. She is infectious with her positive attitude and fearlessness.

When she brought *Park La Brea* to me, asking for my guidance, I felt at the chance to help her bring this important film to life. Bevin is extremely brave to be sharing her story and struggles with BPD. It is a story that needs to be told and shared to bring awareness to the subject matter. She has an incredible team behind her, supporting her. I can think of no one better than Bevin Bru to play the lead character and direct this film. She wrote an incredible script and understands the world and subject matter like no one else.

I am so excited to be a part of this journey with her in any way I can.



Howie Deutch

09/13/2024
Letter of Support for Bevin Bru and *Park La Brea*

It was a pleasure working with Bevin, who was part of a stellar cast on the series *Don't Look Deeper* – along with Don Cheadle and Emily Mortimer. Bevin was a co-star and a bright light on set. She came prepared with so much passion and so many ideas for her character. I have had the pleasure to have Bevin do several table reads for me. She is incredibly alive and original - and infused her natural instincts to add a deeper subtext to every scene she was in. She was always supportive towards her co-stars and made us all laugh. Her work ethic and commitment inspired us all.

I am wholeheartedly thrilled for Bevin's directorial debut on her short film, *Park La Brea*, that represents a significant part of her identity and life path as an artist with a voice for good. Her story will undoubtedly inspire many others who have in the past and continue to struggle with the debilitating effects of Borderline Personality Disorder. Bevin's POV is a valuable insight to show us the depths of Borderline's control and how one can begin to heal and help others. Knowing Bevin, her performance will deliver the message with an authenticity that creates a cultural shift. Her dedication to this cause is truly inspiring.

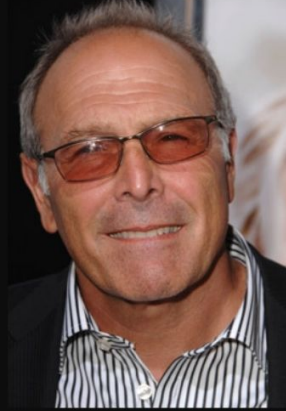
With Support and Gratitude,



Catherine Hardwicke

HOWIE DEUTCH

Director Producer



Howard Deutch is an American film and television director who worked with filmmaker John Hughes, directing two of Hughes's best-known screenplays, *Pretty in Pink* and *Some Kind of Wonderful*. Since 2011, he has primarily directed television productions, including multiple episodes of *Getting On* and *True Blood*. Currently he is the executive producing director on ABC's hit TV show, *Will Trent*.

CATHERINE HARDWICKE

Director Producer



Hardwicke's first film as a director was the Sundance winner *THIRTEEN* which explored the transition into teenage years with an authenticity that still captures young audiences (1.3 billion Tik Tok engagements.) Hardwicke directed *LORDS OF DOGTOWN* before she became best known as the director of *TWILIGHT*, which launched the blockbuster franchise and has since earned over three billion dollars. Recently her film, *Mafia Mamma*, was shot in Rome with Monica Bellucci and Toni Collette and was released in 2023. She also worked on the 2024 Emmy-nominated Hulu series "*Under the Bridge*" starring Riley Keough and Lily Gladstone.

I first worked with Bevin in 2021, but I didn't meet her. We were shooting the BATWOMAN television series with COVID protocols, and I wasn't allowed on set in Vancouver, so the studio streamed the video village feed over the internet so I could watch from my couch back in Los Angeles. There was no way to watch rehearsals, and my notes were communicated to the director via text message. It was, to put it mildly, a frustrating and very boring way to produce television, but Bevin was a bright spot that kept me excited about the episode we were making. Her performance was layered — she was a romantic interest for our lead actor, but the character also needed to be a formidable villain. She was smart about all her choices, and her charisma was self evident despite the fact that I was watching over a glitchy internet connection on my laptop. I was grateful that her performance was so dialed in, even under the crazy circumstances of COVID. A few years later, after I became showrunner of WILL TRENT, I wrote an episode that featured a character who reminded me of Bevin. Lucky for me, she was available to take the role, and this time we could even work together in the same room!

Her intelligence as a performer was even more impressive in person, and when she told me she was preparing to direct, I was thrilled. She's been laying the foundation for this project in a meticulous manner, and Bevin's script is another example of why I think she has the traits required to succeed behind the camera. It's a thrilling read with great pacing, but that's only one part of what I find impressive. The locations are contained, there's no reliance on VFX or too much SFX. The ensemble of characters has distinct voices and tones to play with. Ultimately, script feels tailored to the strengths of what Bevin offers as both a director and actor, and I'm confident she'll be able to create the escalating tension and breaks from reality that will make the final product memorable and satisfying. She's picked a topic that's complex and personal, and packaged it into a story that's going to feel visceral and universal.

As a working actor, Bevin has the rare talent of making a performance look easy even when it's not. And I have all the confidence in the world that she'll work her ass off and be the same way as a director.

Daniel Thomsen

August 30, 2024

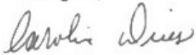
I am writing in support of Bevin's goal to bring this wonderful short film to life.

I had the pleasure of meeting Bevin on a show I created called *Batwoman*. I was looking for an actress who could play gritty, funny, trustable and authentic. I had remembered Bevin from another audition, had a feeling she'd be perfect for this new role, and asked her to audition to prove me right. I love being right! She crushed it.

But not only did Bevin step up and bring the character to life, she came to our show with a passion and work ethic that showrunners dream about. She was professional and easy to work with, and she had a clear vision for who this complicated character was.

With *Batwoman* now behind us, I've followed Bevin and her career, thrilled when she was cast on *Will Trent*, and excited to hear of her next ambitious undertaking *Park La Brea*. Having experienced the way she puts her creative self into everything she does — not only acting, but learning, having fun, and living life to its fullest — I was just waiting for her inner director to come out. I'm convinced this is the perfect next move for her. The script she wrote is real, compelling, and personal to Bevin in a way that separates it from the crowd, which is the reason she is perfect to play the lead and direct. I have no doubt that Bevin's unique sparkle is going to make this film shine.

Best Regards,



Caroline Dries

DANIEL T. THOMSEN

Producer Writer Showrunner



Daniel T. Thomsen is an American television writer and producer. He is known for his work on the FOX science-fiction series *Terminator: The Sarah Connor Chronicles*, the HBO series *Westworld*, and is currently the co-showrunner of the ABC drama series *Will Trent*.

CAROLINE DRIES

Writer Producer Showrunner



Caroline Dries is an American television writer and a producer who has worked as a writer on three series for The CW; *Smallville*, *Melrose Place* and served as an executive producer on *The Vampire Diaries*. She wrote and developed the TV series *Batwoman*. She's currently serving as Co-Showrunner and Executive Producer of the upcoming series *Elle* for Amazon.