

ASHLEY RUDOLPH PORTFOLIO

ASHLEYRUDY.MYPORTFOLIO.COM

More of my work with details and updates
can be seen at my portfolio website above

PORTFOLIO CONTENTS

Traditional Media	2
Model & Room Studies	6
Digital Works	8
Animations	9

ANIMATIONS

ACRYLIC ON CANVAS

Monochromatic study

15" x 10"



SCRATCHBOARD

Modeled after original photo

11" x 13"

Awards: Western High School
"Best in Show"



TRADITIONAL MEDIA

PEN & INK

On Bristol paper, several
reference images used

9" x 11"



ACRYLIC ON WALL

Reference used: original
painting by Ed Beard Jr.

24" x 18"



TRADITIONAL MEDIA

ACRYLIS ON CANVAS

36" x 24"



(EXTENDED)

(Close up of above)

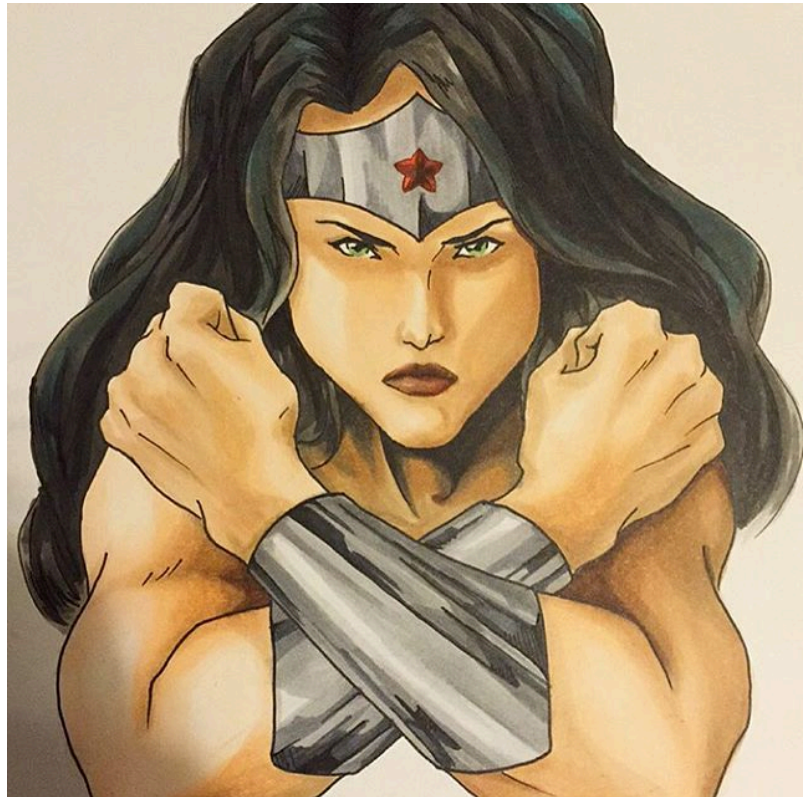


TRADITIONAL MEDIA

COPICS MARKERS

On Bristol paper

9" x 11"



COPICS MARKERS

On Bristol paper

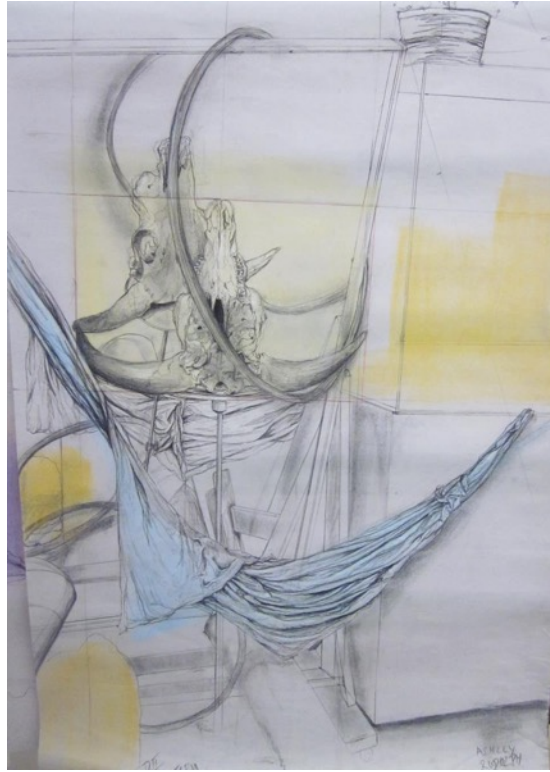
9" x 11"



MODEL & ROOM STUDIES

CHARCOAL

18" x 24"



CHARCOAL

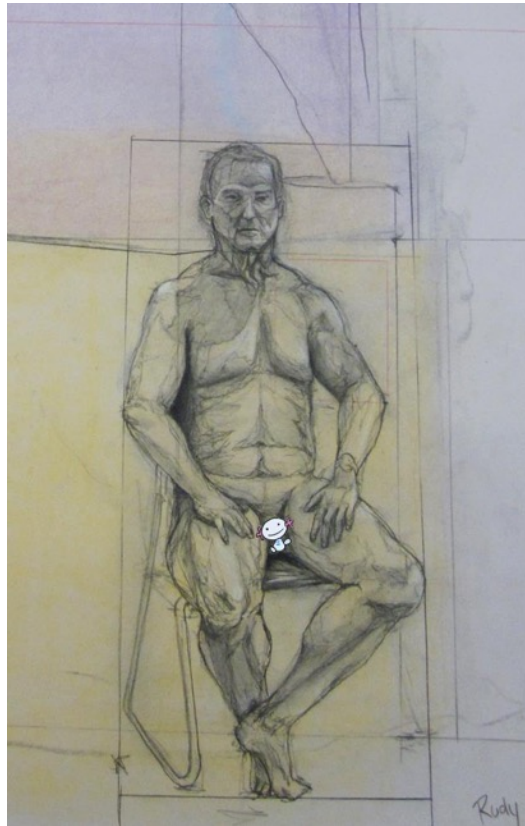
18" x 24"



MODEL & ROOM STUDIES

CHARCOAL

18" x 24"



CHARCOAL

18" x 24"



DIGITAL WORKS

PHOTOSHOP

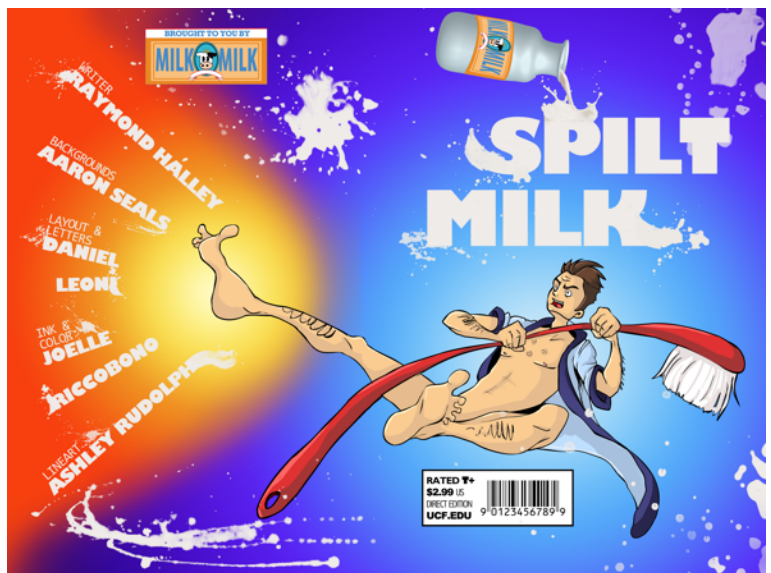
Personal character design



MIXED MEDIA DIGITAL COMIC BOOK

- Began with pencil & paper
- Then scanned into digital
- Line art in Illustrator
- Colors & Effects in Photoshop
- Final layout in InDesign

Personal Brush design
(For the "Milk" brush)



ANIMATIONS

TRADITIONAL WALK CYCLE

<https://ashleyrudy.myportfolio.com/walk-cycle>

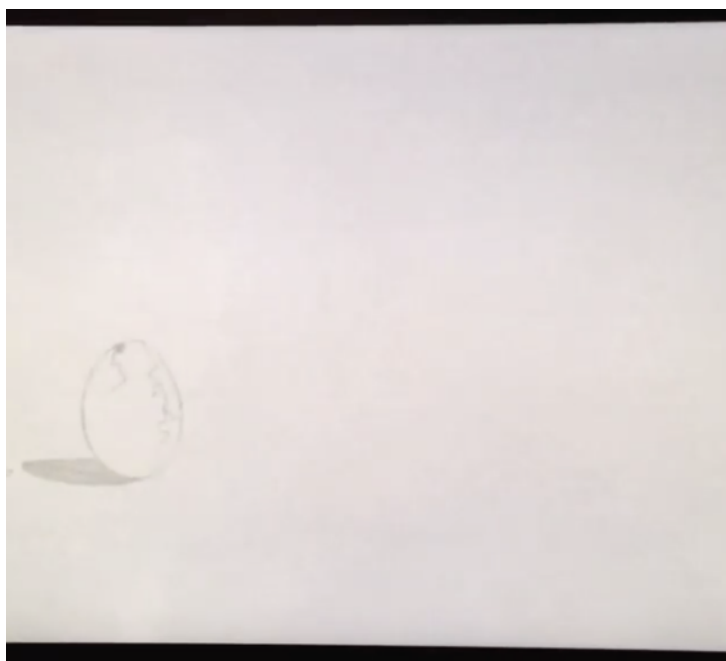
Pencil and animation paper with pegs. Traditional tools used such as light table, animation pegs, and keyframe papers



ALTERNATIVE TO TRADITIONAL "BALL BOUNCE"

<https://ashleyrudy.myportfolio.com/egg-break>

Pencil and animation paper with pegs. Traditional tools used such as light table, animation pegs, and keyframe papers

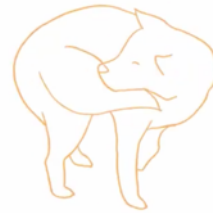


ANIMATIONS

ROTSOSCOPE STUDY

<https://ashleyrudy.myportfolio.com/rotoscope-nala>

Rotoscope study using Toon Boom Harmony



"PUPPY LOVE"

<https://www.youtube.com/watch?v=5-huNrMkBqY&t=7s>

Animation using Toon Boom Harmony, After Effects, and Photoshop

